

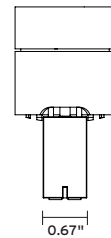
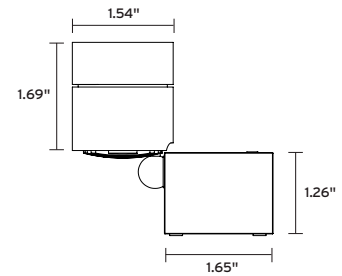
C2-C is an LED spotlight for installation on a magnetic track, suitable for showcase lighting in museum and retail settings. It is 180° rotatable, 90° swiveling, and available with a single or triple lens, 5 color temperatures and 2 standard finishes. C2-C is the only 24V track head and cannot be combined with other fixtures on the track. Dimming via the Casambi app.



TECHNICAL DATA

Wattage / Input	4.5W (single lens - 24VDC) 4.5W (triple lens - 24VDC)
Power Supply	Remote, not included. See page 3.
Dimming	External via Potentiometer (incl.) Individually controlled by Casambi App
Construction	Body: Anodized Aluminum
CCT	2700K, 3000K, 3500K, 4000K, 5700K
CRI	>90
Delivered Lumens	260 lm (single lens, 3000K, 25°) 310 lm (triple lens, 3000K, 25°)
Efficacy	58 lm/W (single lens, 3000K, 25°) 69 lm/W (triple lens, 3000K, 25°)
Optics	Single Lens: 6°, 12°**, 25°, 60°, 35°+15°**, 50°+12°** Triple Lens: 13°, 25°, 42°
Finishes	2 Standard, See Below Custom RAL
Fixture Dimensions	Ø1.54" x 3.46"
Lumen Maintenance	L80, B10 >50,000hrs

Fixture Dimensions



Single or Triple Lens Version

ORDERING INFORMATION

Example: C2-C-40-25-GO. Accessories / Power Supplies ordered separately.

C2-C - [] - [] - []

Model No.	CCT	Optics	Finish
C2-C	27 - 2700K	6 - 6° single lens	SW - Anodized Black
(A400031 - single)	30 - 3000K	12 - 12° single lens**	SI - Silver
(A400032 - triple)	35 - 3500K	25 - 25° single lens	<u>Custom (min. 10)</u>
	40 - 4000K	60 - 60° single lens	CH - Champagne
	57 - 5700K	35 - 35°+15° single lens**	HA - Hard Anodized
		50 - 12°+50° single lens**	GO - Gold
		T3 - 13° triple lens	BR - Mocha Bronze
		T5 - 25° triple lens	RAL - Custom RAL
		T2 - 42° triple lens	

** SEE ACCESSORIES PAGE - EXTRA CHARGE FOR 12° OR LENS WITH LIGHT DIFFUSION FOIL

Job Name/Date:

Fixture Type Designation:

ACCESSORIES



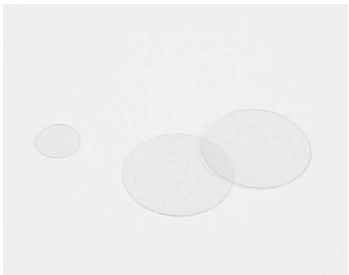
Honeycomb Grid
A000603



Anti-Glare Tube
A300171-__
SI - Silver
SW - Black
CH - Champagne (min 10)
HA - Hard Anodized (min 10)
GO - Gold (min 10)
BR - Mocha Bronze (min 10)
RAL - Custom RAL (min 10)



Inclined Tube
A300172-__
SI - Silver
SW - Black
CH - Champagne (min 10)
HA - Hard Anodized (min 10)
GO - Gold (min 10)
BR - Mocha Bronze (min 10)
RAL - Custom RAL (min 10)



****12° Lens**
A000520-S
Light Diffusion Foil and Lens Ring

****35°+15° Lens**
A000523-S
Light Diffusion Foil and Lens Ring

****12°+50° Lens**
A000524-S
Light Diffusion Foil and Lens Ring



Barn Door
A300148-__
SI - Silver
SW - Black
RAL - Custom RAL (min 10)



C2 Snoot (7°)
A300215-__
SI - Silver
SW - Black
CH - Champagne (min 10)
HA - Hard Anodized (min 10)
GO - Gold (min 10)
BR - Mocha Bronze (min 10)
RAL - Custom RAL (min 10) 10)

Job Name/Date:

Fixture Type Designation:

SUGGESTED POWER SUPPLIES

24VDC

Part Number	Description	Input/Output	# of Fixtures
PPLT00284	Non-Dim	120-277VAC to 24VDC, 100W, Class 2	1-17
PPLT00543	0-10V Dimming to 15% (-40°C / -40°F cold weather start)	120-277VAC to 24VDC, 100W, Class 2	3-17

Suggested Lutron Compatible

Part Number	Option	Lutron SKU	Dim Range	Description	Input/Output	# of Fixtures
PPLT00530	L3D0	L3D0	100%-0.1%	Hi-Lume™ Premier 0.1% or Ecosystem 3-Wire LED Driver	120-277VAC to 24VDC , 96W, Class 2	1-17

DRIVERS IN NEMA ENCLOSURE

Remote 24VDC - ELV / TRIAC / 0-10V



PPLT00715

Part Number	Description	Input/Output	# of Fixtures 4.5W
PPLT00715	ELV / TRIAC / 0-10V Dimming to 0.1%	120-277VAC to 24VDC, 96W, Class 2, WET/DAMP	1-17

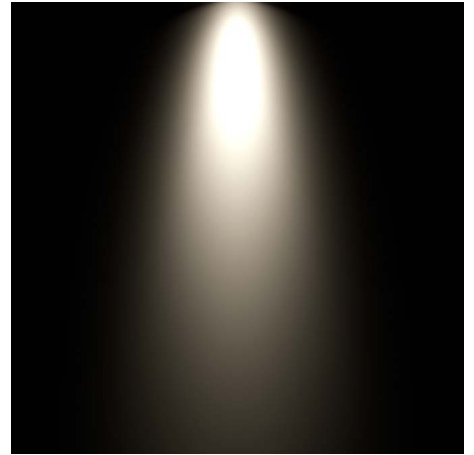
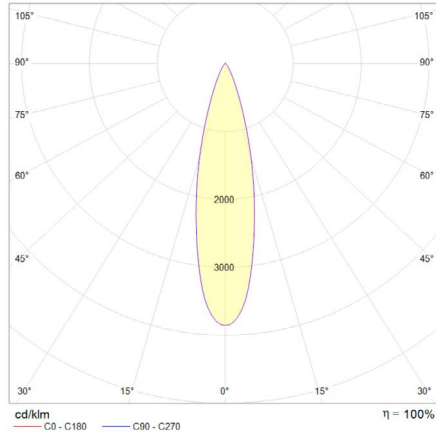
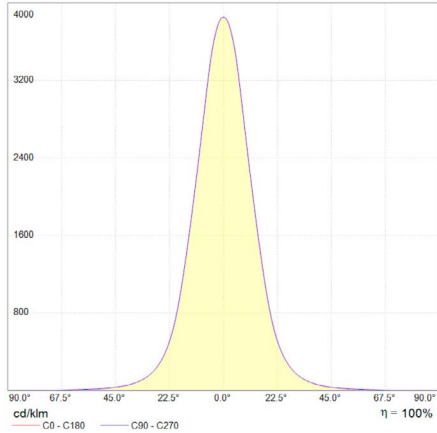
For other power supply options consult factory.

Job Name/Date:

Fixture Type Designation:

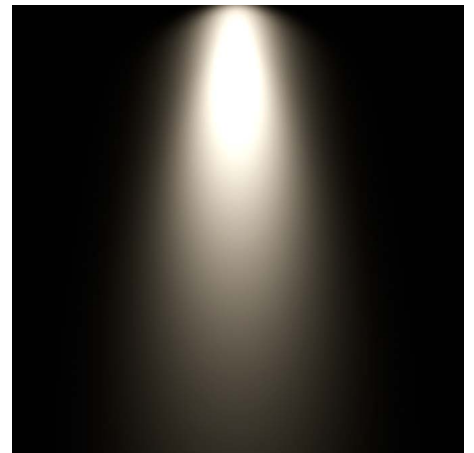
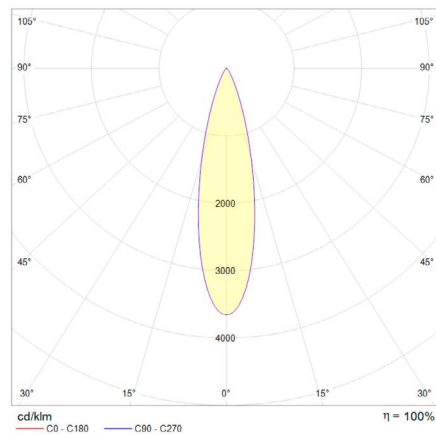
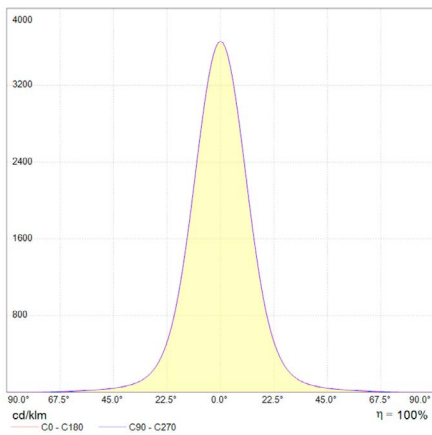
PHOTOMETRIC DATA - Single Lens

for light color 3000K | standard lens 25° | CRI typ. 97, R9 > 90, R12 > 90 | color variation ≤ 3 SDCM



PHOTOMETRIC DATA - Triple Lens

for light color 3000K | standard lens 25° | CRI typ. 97, R9 > 90, R12 > 90 | color variation ≤ 3 SDCM



Job Name/Date:

Fixture Type Designation: