

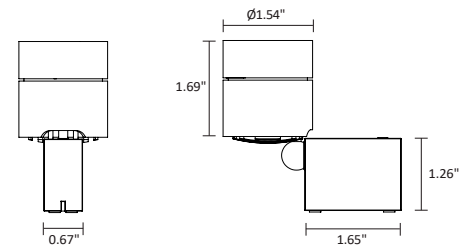
C2-ST5 is an LED spotlight for installation on magnetic track that dims using a button on the foot. It is larger than the C1 series, suitable for showcase lighting in museum and retail settings, and is 180° rotatable, 90° swiveling, with a single or triple lens, 5 color temperatures and 3 standard finishes.



TECHNICAL DATA

Wattage / Input	4.5W (12VDC)
Power Supply	Remote - See Magnetic Track Sheet
Dimming	On Board - Using a button on the foot
Construction	Body: Anodized Aluminum
CCT	2700K, 3000K, 3500K, 4000K, 5700K
CRI	>90
Delivered Lumens	260 lm (single lens, 3000K, 25°) 310 lm (triple lens, 3000K, 25°)
Efficacy	58 lm/W (single lens, 3000K, 25°) 69 lm/W (triple lens, 3000K, 25°)
Optics	Single Lens: 14°, 25°, 60°, 40°+15° Triple Lens: 18°, 25°, 32°, 67°
Finishes	3 Standard, See Below
Fixture Dimensions	Ø1.54" x 1.69" (head) 1.26" x 1.65" (base)
Lumen Maintenance	L80,B10 >50,000hrs
IP Rating	IP20

Fixture Dimensions

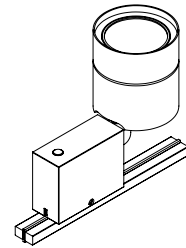


Single or Triple Lens Version

ORDERING INFORMATION

Example: C2-ST5-40-25-G. Accessories ordered separately.

C2-ST5	-		-		-	
Model No.	CCT	Optics	Finish			
C2-ST5	27 - 2700K 30 - 3000K 35 - 3500K 40 - 4000K 57 - 5700K	14 - 14° single lens 25 - 25° single lens 60 - 60° single lens 40 - 40°+15° single lens T8 - 18° triple lens T5 - 25° triple lens T2 - 32° triple lens T7 - 67° triple lens	B - Anodized Black S - Silver G - Gold C - Custom RAL <i>(consult factory for "C")</i>			



Job Name/Date:

Fixture Type Designation:

ACCESSORIES



Honeycomb Grid
A000603



Anti-Glare Tube
A300171-__
SI - Silver
SW - Black
CH - Champagne
HA - Hard Anodized
GO - Gold
RAL - Custom RAL



Inclined Tube
A300172-__
SI - Silver
SW - Black
CH - Champagne
HA - Hard Anodized
GO - Gold



Light Diffusion Foil



Barn Door
A300148-__
SI - Silver
SW - Black
RAL - Custom RAL

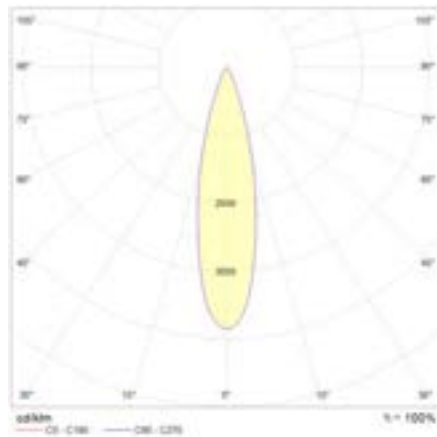
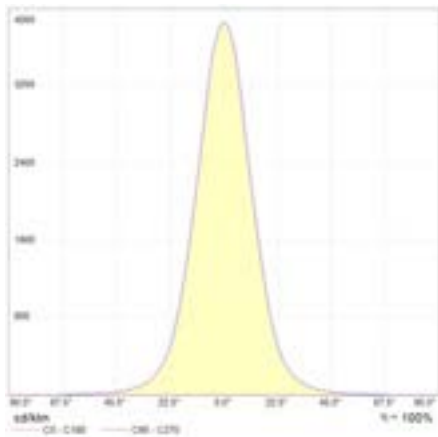
**See separate sheet
for Magnetic Track
and Magnetic Track
Holders.**

Job Name/Date:

Fixture Type Designation:

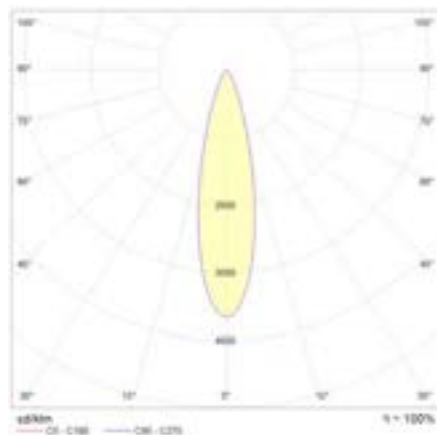
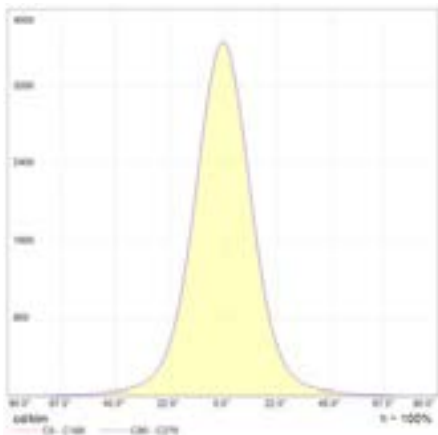
PHOTOMETRIC DATA - Single Lens

for light color 3000K | standard lens 25° | color rendering index typ. 97, R9 > 90, R12 > 90 | color variation ≤ 3 SDCM



PHOTOMETRIC DATA - Triple Lens

for light color 3000K | standard lens 25° | color rendering index typ. 97, R9 > 90, R12 > 90 | color variation ≤ 3 SDCM



Job Name/Date:

Fixture Type Designation: