

Plank Athena is an elegant lighting solution designed for the minimalist, using the Lutron Athena Wireless Node. With a 0.625" body and wooden side panels, Plank offers linear spread upper emission and diffused lower. It has adjustable integral 120-277VAC, 0-10V dimming drivers which make for easy integration into office, residential and commercial environments.



TECHNICAL DATA

Wattage / Input	72W (4 ft) (120-277VAC)
Power Supply	Integral (0-10V Dimming)
Construction	Body: Extruded Aluminum Side Panels: Wood - available white oak, maple, cherry or walnut (contact factory for wood options) Mounting: Aircraft Cable
CCT	2700K, 3000K, 3500K, 4000K
CRI	>90
Delivered Lumens	Up - 1848 lm, Down - 1866 lm (4 ft, 3000K)
Efficacy	Up: 25.6 lm/W, Down: 25.9 lm/W
Optics	Up: Linear Spread, Down: Diffuse
Finishes	4 Standard, See Below.
Fixture Dimensions	See page 2.
IP Rating	IP20



White Oak Maple Cherry Walnut
Please note: Wood grain and colors may vary.

MADE IN THE U.S.A.

Fixture Dimensions
See Chart and Drawing on page 2.

*Athena Controls by Others

ORDERING INFORMATION

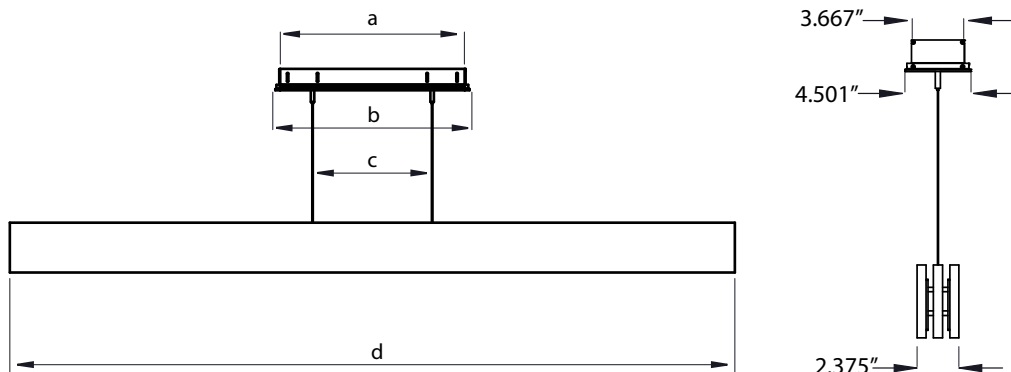
Example: P90-A-4-30-P-10-M-C-SW.

P90-A	-	4	-		-	P	-		-		-	C	-	
Model No.	Length	CCT	Body	Finish	Wood	Driver	Canopy							
P90-A	4 - 4 foot	27 - 2700K 30 - 3000K 35 - 3500K 40 - 4000K	P - Pendant	02 - Black Suede 18 - Tex. Bronze TS - Silver 11 - White Suede 99 - Custom	O - White Oak M - Maple C - Cherry W - Walnut	C - 120-277VAC, 0-10V Dimming <								

Job Name/Date:

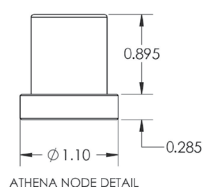
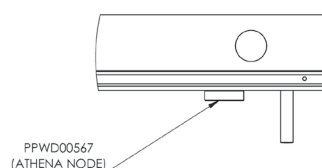
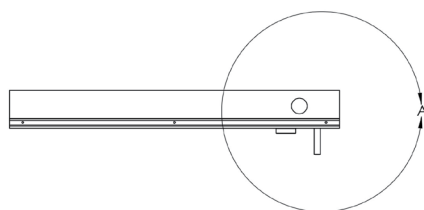
Fixture Type Designation:

FIXTURE DIMENSIONS



Dimensions	4 Ft.
a	18.7"
b	19.5"
c	16"
d	48.7"

ATHENA NODE PLACEMENT



LAMBDA ATHENA
HALF PINT ATHENA
NINE ATHENA
PLANK ATHENA
SIDE VIEW

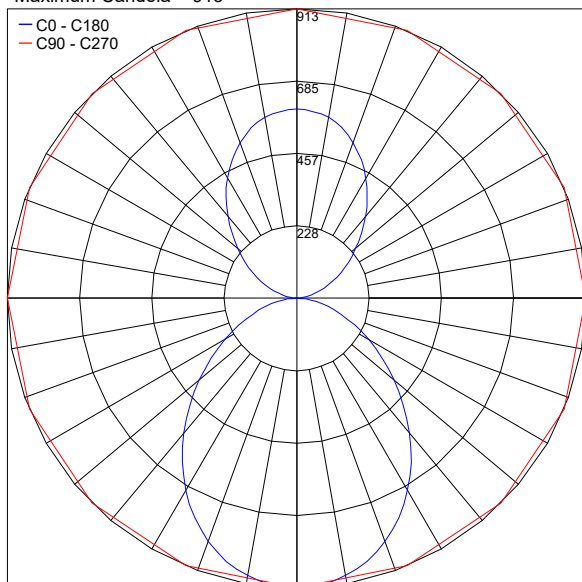
Job Name/Date:

Fixture Type Designation:

PHOTOMETRIC DATA

Note all Photometry is 3000K

Maximum Candela = 913



Job Name/Date:

Fixture Type Designation: