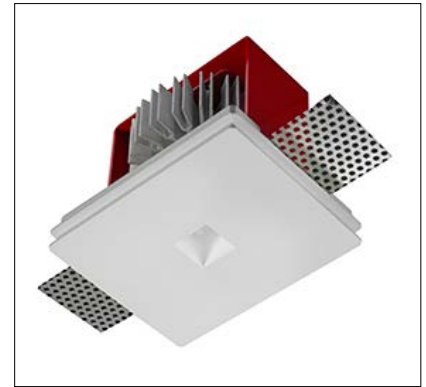


# GENIUS SQUARE DIM TO WARM

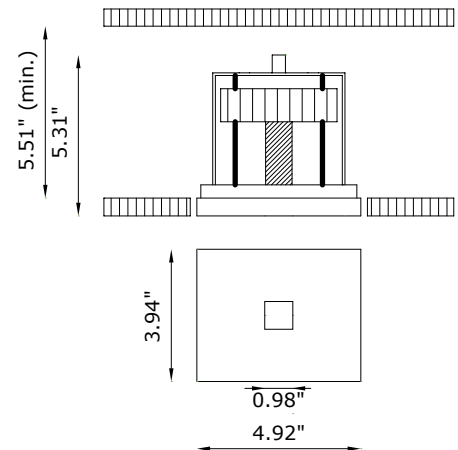
Genius Square Dim to Warm is a small and powerful recessed LED downlight with an aperture less than 0.98" square, that provides a dim to warm (1800K-3000K) light. Easy access to LED module via a unique spring loaded mechanism. Can be used in IC, Chicago Plenum ceilings.



## TECHNICAL DATA

<b>Wattage / Input</b>	6W (350mA)
<b>Power Supply</b>	Remote, not included. See page 2.
<b>Construction</b>	Body: AirCoral® Frame: Steel Aluminum Heat Sink
<b>CCT</b>	1800K-3000K
<b>CRI</b>	95
<b>Delivered Lumens</b>	380 lm (3000K)
<b>Efficacy</b>	63 lm/W (3000K)
<b>Optics</b>	40°
<b>Finishes</b>	Unfinished
<b>Cut-Out Dimensions</b>	5.31" x 4.33"
<b>Fixture Dimensions</b>	4.92" x 3.94" x 5.31" h
<b>Aperture</b>	0.98" x 0.98"
<b>Fixture Weight</b>	1.76 lbs
<b>LED Source</b>	1 COB LED Removable Cartridge
<b>IP Rating</b>	IP20

Ceiling Cut-Out: 5.31" x 4.33"  
Fixture Dimensions:



The body is made of Aircoral® a unique patented composite material that actually purifies the air. It can be calculated how many cubic feet each fixture will purify. See website for Aircoral® calculator.

Additionally, Aircoral® is:

- Antibacterial.
- Antifungal.
- Scratch-resistant.
- Dust-resistant.
- Suitable for painting.
- LEED recognized material.

## ORDERING INFORMATION

Example: BU1863.AC7R40U98WD.US. Accessories / Power Supplies ordered separately.

<b>BU1863</b>	<b>AC</b>	<b>7R40U98WD</b>	<b>.US</b>
<b>Model No.</b>	<b>Finish</b>		
BU1863	AC - AirCoral®	7R40U98WD	.US

Job Name/Date:

Fixture Type Designation:

## SUGGESTED POWER SUPPLIES

350mA

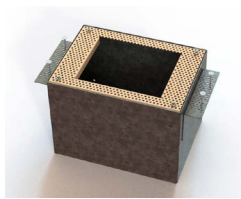
Part Number	Description	Input/Output	# of Fixtures
<a href="#">PPLT00148</a>	0-10V Dimming to 10%	120-277VAC to 350mA, 6W, Class 2	1 - 1
<a href="#">PPLT00496</a>	Phase Dim (120V only)	120VAC to 350mA, 12W, Class 2	1 - 1
<a href="#">PPLT00662</a>	0-10V Dimming to 10%	120-277VAC to 350mA, 20W, Class 2, IP66	2 - 2
<a href="#">PPLT00263</a>	Leading / Trailing Edge Dimming to 10% (120V only)	120-277VAC to 350mA, 32W, Class 2	2 - 2
<a href="#">PPLT00467-P</a>	0-10V Dimming to 1.0%	120-277VAC to 350mA, 50W, Class 2, DAMP	1 - 2
<a href="#">PPLT00538-P</a>	0-10V Dimming to 0.1% (4 channels)	120-277VAC to 350mA, 100W, Class 2	1 - 3 (1 - 12)

## Suggested Lutron Compatible

Part Number	Option	Lutron SKU	Dim Range	Description	Input/Output	# of Fixtures
<a href="#">PPLT00247</a>	L3DAE / L3DA3W	L3DA	100%-1%	Hi-lume™ 1% EcoSystem™ / 1% 3-Wire LED Driver	120-277VAC to 350mA, 7W	1 - 1
<a href="#">PPLT00516</a>	L3DAE / L3DA3W	L3DA	100%-1%	Hi-lume™ 1% EcoSystem™ / 1% 3-Wire LED Driver	120-277VAC to 350mA, 13W	1 - 2
<a href="#">PPLT00179</a>	L3DAE / L3DA3W	L3DA	100%-1%	Hi-lume™ 1% EcoSystem™ / 1% 3-Wire LED Driver	120-277VAC to 350mA, 19W	2 - 2

For other power supply options consult factory.

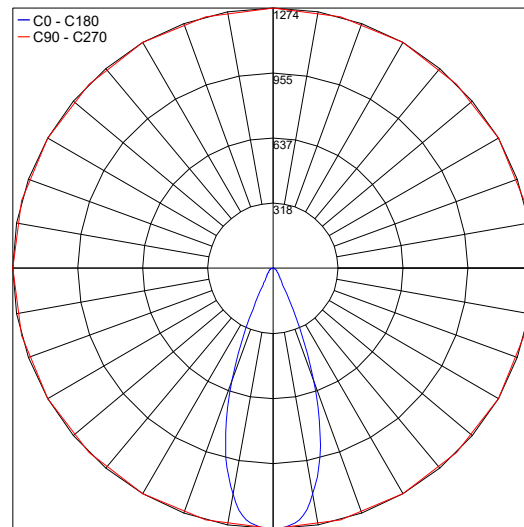
## ACCESSORIES - Installation



**BR1855 -** \_\_\_  
 Back Box  
 Include one of the below options:  
**LT** - IC Rated  
**LT-C** - Chicago Plenum

## PHOTOMETRIC DATA

Maximum Candela = 1274



Job Name/Date:

Fixture Type Designation: