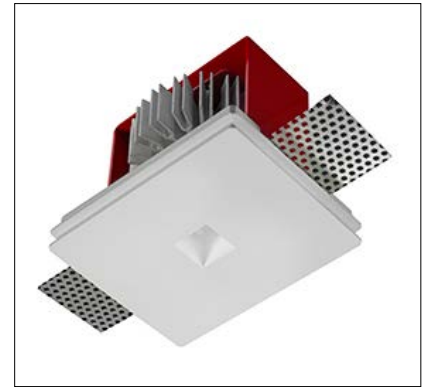


GENIUS SQUARE DIM TO WARM

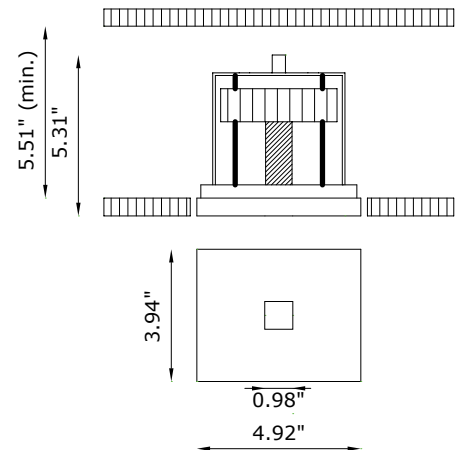
Genius Square Dim to Warm is a small and powerful recessed LED downlight with an aperture less than 0.98" square, that provides a dim to warm (1800K-3000K) light. Easy access to LED module via a unique spring loaded mechanism. Can be used in IC, Chicago Plenum ceilings.



TECHNICAL DATA

| | |
|---------------------------|-------------------------------------------------------|
| Wattage / Input | 6W (350mA) |
| Power Supply | Remote, not included. See page 2. |
| Construction | Body: AirCoral® Frame: Steel Aluminum Heat Sink |
| CCT | 1800K-3000K |
| CRI | 95 |
| Delivered Lumens | 380 lm (3000K) |
| Efficacy | 63 lm/W (3000K) |
| Optics | 40° |
| Finishes | Unfinished |
| Cut-Out Dimensions | 5.31" x 4.33" |
| Fixture Dimensions | 4.92" x 3.94" x 5.31" h |
| Aperture | 0.98" x 0.98" |
| Fixture Weight | 1.76 lbs |
| LED Source | 1 COB LED Removable Cartridge |
| IP Rating | IP20 |

Ceiling Cut-Out: 5.31" x 4.33"
Fixture Dimensions:



The body is made of Aircoral® a unique patented composite material that actually purifies the air. It can be calculated how many cubic feet each fixture will purify. See website for Aircoral® calculator.

Additionally, Aircoral® is:

- Antibacterial.
- Antifungal.
- Scratch-resistant.
- Dust-resistant.
- Suitable for painting.
- LEED recognized material.

ORDERING INFORMATION

Example: BU1863.AC7R40U98WD.US. Accessories / Power Supplies ordered separately.

| | | | |
|------------------|----------------|-----------|-----|
| BU1863 | AC | 7R40U98WD | .US |
| Model No. | Finish | | |
| BU1863 | AC - AirCoral® | 7R40U98WD | .US |

Job Name/Date:

Fixture Type Designation:

SUGGESTED POWER SUPPLIES

350mA

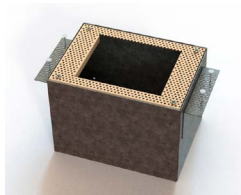
| Part Number | Description | Input/Output | # of Fixtures |
|-----------------------------|----------------------------------------------------|-----------------------------------------|----------------|
| PPLT00148 | 0-10V Dimming to 10% | 120-277VAC to 350mA, 6W, Class 2 | 1 - 1 |
| PPLT00496 | Phase Dim (120V only) | 120VAC to 350mA, 12W, Class 2 | 1 - 1 |
| PPLT00662 | 0-10V Dimming to 10% | 120-277VAC to 350mA, 20W, Class 2, IP66 | 2 - 2 |
| PPLT00263 | Leading / Trailing Edge Dimming to 10% (120V only) | 120-277VAC to 350mA, 32W, Class 2 | 2 - 2 |
| PPLT00467-P | 0-10V Dimming to 1.0% | 120-277VAC to 350mA, 50W, Class 2, DAMP | 1 - 2 |
| PPLT00538-P | 0-10V Dimming to 0.1% (4 channels) | 120-277VAC to 350mA, 100W, Class 2 | 1 - 3 (1 - 12) |

Suggested Lutron Compatible

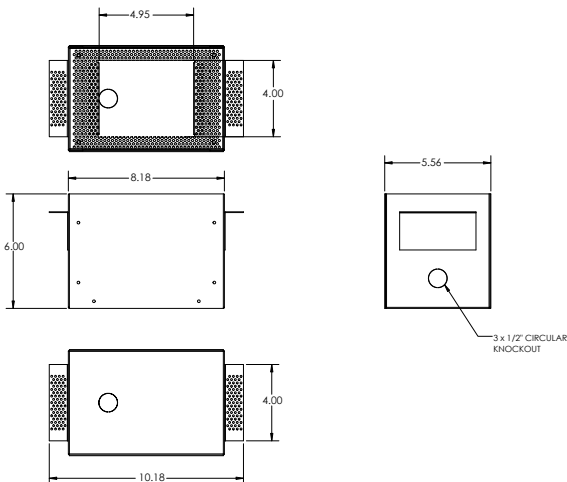
| Part Number | Option | Lutron SKU | Dim Range | Description | Input/Output | # of Fixtures |
|---------------------------|----------------|------------|-----------|-----------------------------------------------|--------------------------|---------------|
| PPLT00247 | L3DAE / L3DA3W | L3DA | 100%-1% | Hi-lume™ 1% EcoSystem™ / 1% 3-Wire LED Driver | 120-277VAC to 350mA, 7W | 1 - 1 |
| PPLT00516 | L3DAE / L3DA3W | L3DA | 100%-1% | Hi-lume™ 1% EcoSystem™ / 1% 3-Wire LED Driver | 120-277VAC to 350mA, 13W | 1 - 2 |
| PPLT00179 | L3DAE / L3DA3W | L3DA | 100%-1% | Hi-lume™ 1% EcoSystem™ / 1% 3-Wire LED Driver | 120-277VAC to 350mA, 19W | 2 - 2 |

For other power supply options consult factory.

ACCESSORIES - Installation

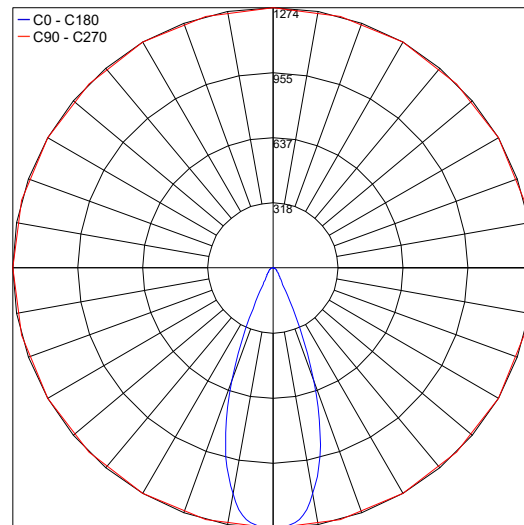


BR1855 - ___
Back Box
 Include one of the below options:
LT - IC Rated
LT-C - Chicago Plenum



PHOTOMETRIC DATA

Maximum Candela = 1274



Job Name/Date:

Fixture Type Designation: