

# GENIUS SQUARE DIM TO WARM

Genius Square Dim to Warm is a small and powerful recessed LED downlight with an aperture less than 0.98" square, that provides a dim to warm (1800K-3000K) light. Easy access to LED module via a unique spring loaded mechanism. Can be used in IC, Chicago Plenum ceilings.

## TECHNICAL DATA

|                           |   |
|---------------------------|---|
| <b>Wattage / Input</b>    | 6W (350mA)  |
| <b>Power Supply</b>       | Remote, not included. See page 2.                     |
| <b>Construction</b>       | Body: AirCoral®<br>Frame: Steel<br>Aluminum Heat Sink |
| <b>CCT</b>                | 1800K-3000K   |
| <b>CRI</b>                | 95  |
| <b>Delivered Lumens</b>   | 380 lm (3000K)  |
| <b>Efficacy</b>           | 63 lm/W (3000K)                                       |
| <b>Optics</b>             | 40°   |
| <b>Finishes</b>           | Unfinished  |
| <b>Cut-Out Dimensions</b> | 5.31" x 4.33"   |
| <b>Fixture Dimensions</b> | 4.92" x 3.94" x 5.31" h                               |
| <b>Aperture</b>           | 0.98" x 0.98"   |
| <b>Fixture Weight</b>     | 1.76 lbs  |
| <b>LED Source</b>         | 1 COB LED Removable Cartridge                         |
| <b>IP Rating</b>          | IP20  |

The body is made of AirCoral® a unique patented composite material that actually purifies the air. It can be calculated how many cubic feet each fixture will purify. See website for AirCoral® calculator.

Additionally, AirCoral® is:

- Antibacterial.
- Antifungal.
- Scratch-resistant.
- Dust-resistant.
- Suitable for painting.
- LEED recognized material.

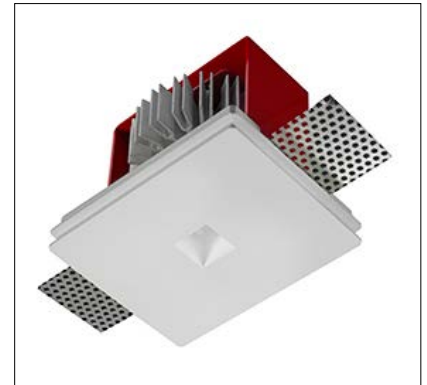
## ORDERING INFORMATION

Example: BU1863.AC7R40U98WD.US. Accessories / Power Supplies ordered separately.

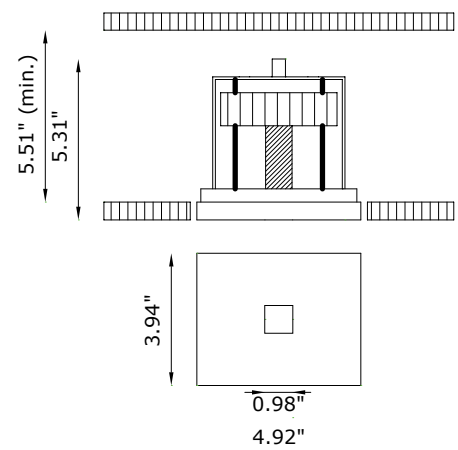
|                  |                |           |     |
|------------------|----------------|-----------|-----|
| BU1863           | AC             | 7R40U98WD | .US |
| <b>Model No.</b> | <b>Finish</b>  |           |     |
| BU1863           | AC - AirCoral® | 7R40U98WD | .US |

Job Name/Date:

Fixture Type Designation:



Ceiling Cut-Out: 5.31" x 4.33"  
Fixture Dimensions:





## SUGGESTED POWER SUPPLIES

350mA

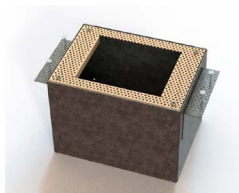
| Part Number                 | Description  | Input/Output                            | # of Fixtures  |
|-----------------------------|--|---|----------------|
| <a href="#">PPLT00148</a>   | 0-10V Dimming to 10%                               | 120-277VAC to 350mA, 6W, Class 2        | 1 - 1          |
| <a href="#">PPLT00496</a>   | Phase Dim (120V only)                              | 120VAC to 350mA, 12W, Class 2           | 1 - 1          |
| <a href="#">PPLT00662</a>   | 0-10V Dimming to 10%                               | 120-277VAC to 350mA, 20W, Class 2, IP66 | 2 - 2          |
| <a href="#">PPLT00263</a>   | Leading / Trailing Edge Dimming to 10% (120V only) | 120-277VAC to 350mA, 32W, Class 2       | 2 - 2          |
| <a href="#">PPLT00467-P</a> | 0-10V Dimming to 1.0%                              | 120-277VAC to 350mA, 50W, Class 2, DAMP | 1 - 2          |
| <a href="#">PPLT00538-P</a> | 0-10V Dimming to 0.1% (4 channels)                 | 120-277VAC to 350mA, 100W, Class 2      | 1 - 3 (1 - 12) |

## Suggested Lutron Compatible

| Part Number               | Option         | Lutron SKU | Dim Range | Description   | Input/Output             | # of Fixtures |
|---------------------------|----------------|------------|-----------|---|--------------------------|---------------|
| <a href="#">PPLT00247</a> | L3DAE / L3DA3W | L3DA       | 100%-1%   | Hi-lume™ 1% EcoSystem™ / 1% 3-Wire LED Driver           | 120-277VAC to 350mA, 7W  | 1 - 1         |
| <a href="#">PPLT00252</a> | LTEA2W         | LTEA       | 100%-1%   | Hi-lume™ 1% 2-wire LED Driver (120V forward phase only) | 120VAC to 350mA, 7W      | 1 - 1         |
| <a href="#">PPLT00516</a> | L3DAE / L3DA3W | L3DA       | 100%-1%   | Hi-lume™ 1% EcoSystem™ / 1% 3-Wire LED Driver           | 120-277VAC to 350mA, 13W | 1 - 2         |
| <a href="#">PPLT00271</a> | LTEA2W         | LTEA       | 100%-1%   | Hi-lume™ 1% 2-wire LED Driver (120V forward phase only) | 120VAC to 350mA, 13W     | 1 - 2         |
| <a href="#">PPLT00179</a> | L3DAE / L3DA3W | L3DA       | 100%-1%   | Hi-lume™ 1% EcoSystem™ / 1% 3-Wire LED Driver           | 120-277VAC to 350mA, 19W | 2 - 2         |
| <a href="#">PPLT00220</a> | LTEA2W         | LTEA       | 100%-1%   | Hi-lume™ 1% 2-wire LED Driver (120V forward phase only) | 120VAC to 350mA, 19W     | 2 - 2         |

For other power supply options consult factory.

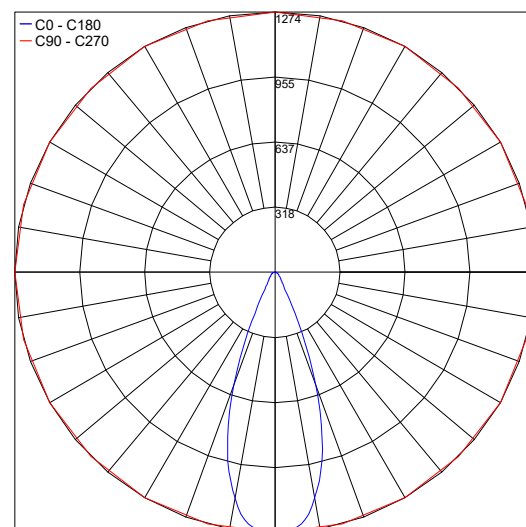
## ACCESSORIES - Installation



**BR1855** -   
Back Box  
Include one of the below options:  
**LT** - IC Rated  
**LT-C** - Chicago Plenum

## PHOTOMETRIC DATA

Maximum Candela = 1274



Job Name/Date:

Fixture Type Designation: