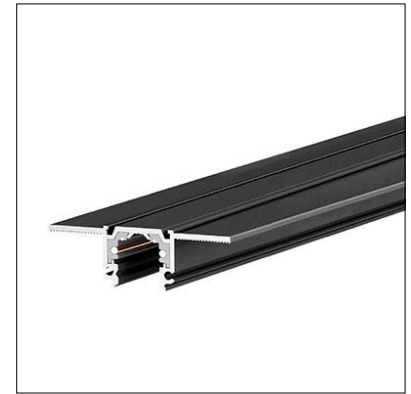


N-INSIDE NANO 48V TRACK

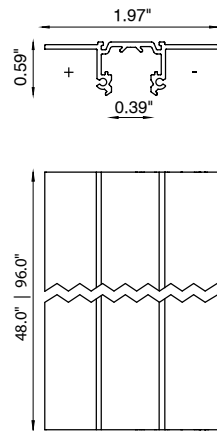
N-Inside is a smaller, flush mounted, low voltage track lighting system for interiors, used for spotlights, pendants and linear installations. Track and structures can be managed by non-dim remote control systems. The profile has a length of between 48.0" or 96.0", extruded in anodized black aluminum and fitted with 48V leads.



TECHNICAL DATA

Wattage / Input	Based on head, pendant or linear luminaire
Power Supply	Remote 48VDC, not included. See page 2.
Dimming	See track heads for dimming protocol
Construction	Body: Aluminum
CCT	See track head, pendant, linear datasheets
CRI	>90
Mounting	Recessed Flush
Finishes	Black RAL 9005
Lengths	48.0" or 96.0"
Cutout Dimensions	0.39" track width x 0.59" height 1.97" full width 48.0" or 96.0" length
Circuits	2 x ±10 A · 48 VDC 1 x ±10 A · 48 VDC + D+/D-
Notes	The supply connectors, plugs and further fixture accessories must be ordered separately. Any 90° connector must be ordered separately to ensure electric continuity in the corners. Light points cannot be installed in the corners.

Fixture Dimensions



ORDERING INFORMATION

Example: **BUT048T05B10071.US**. Power Supplies ordered separately.

BUT048T05	B1	0		1	US
Model No.	Finish		Length		
BUT048T05	B1 - Black	0	07 - 48.0" 08 - 96.0"	1	US

Job Name/Date:

Fixture Type Designation:

N-INSIDE NANO 48V TRACK

SUGGESTED POWER SUPPLIES

For other power supply options consult factory.

Part Number	Description	Input/Output	# of Fixtures
PPLT00577	Non-Dim	120-277VAC to 48VDC, 96W, Class 2	Any combo of fixtures may be used as long as the total wattage does not exceed 77W

For use with these track heads, pendants and linear fixtures



L1 Nano



The Tube Nano



U1 Nano



X1 Nano

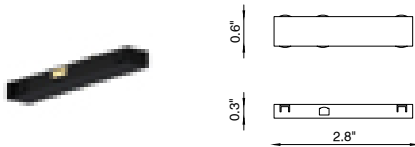


Y1 Nano



Z1 Nano

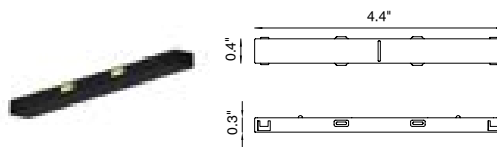
ACCESSORIES



BUT048A00095B1

Power Head - to be used at the beginning

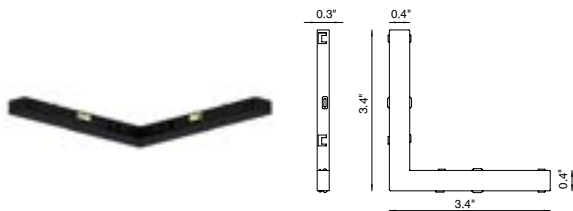
Must choose one power feed



BUT048A00064B1

Through Joint

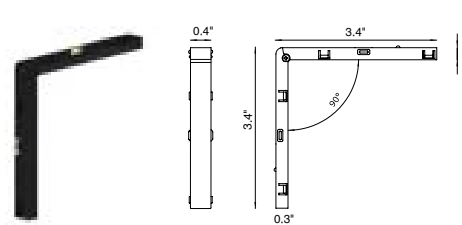
Used to connect two tracks and to guarantee the supply of current.



BUT048A00065B1

90° Corner Joint

Used to connect two tracks joined at 90° and to guarantee that current reaches the corners. Light points cannot be installed in the corners.



BUT048A00066B1

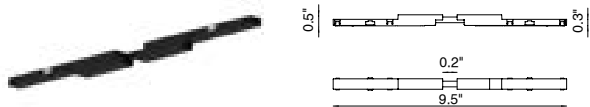
Ceiling-Wall 90° Corner Joint

Non-polarized angle for ceiling-to-wall connection, used to connect two tracks joined to 90°. Light points cannot be installed in the corners.

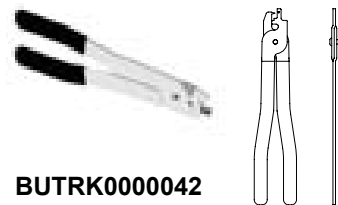
Job Name/Date:

Fixture Type Designation:

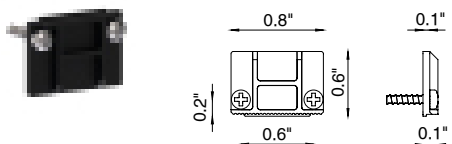
ACCESSORIES (continued)



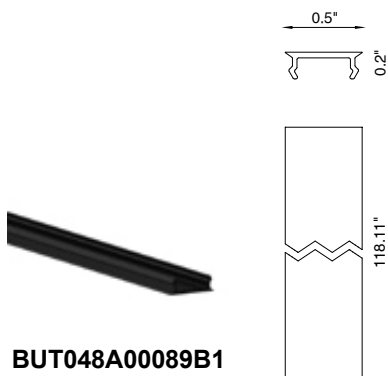
BUT048A00067B1
Flexible Joint



BUTRK0000042
Cutter



BUT048A00062B1
Closure Plug



BUT048A00089B1
Closing Cover

Cover installable at the bottom between the various spotlights, to hide the inside of the track and to allow aesthetic continuity.

Job Name/Date:

Fixture Type Designation: