

# N-INSIDE NANO 48V TRACK

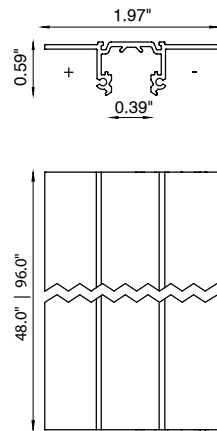
N-Inside is a smaller, flush mounted, low voltage track lighting system for interiors, used for spotlights, pendants and linear installations. Track and structures can be managed by non-dim remote control systems. The profile has a length of between 48.0" or 96.0", extruded in anodized black aluminum and fitted with 48V leads.



## TECHNICAL DATA

<b>Wattage / Input</b>	Based on head, pendant or linear luminaire
<b>Power Supply</b>	Remote 48VDC, not included. See page 2.
<b>Dimming</b>	See track heads for dimming protocol
<b>Construction</b>	Body: Aluminum
<b>CCT</b>	See track head, pendant, linear datasheets
<b>CRI</b>	>90
<b>Mounting</b>	Recessed Flush
<b>Finishes</b>	Black RAL 9005
<b>Lengths</b>	48.0" or 96.0"
<b>Cutout Dimensions</b>	0.39" track width x 0.59" height 1.97" full width 48.0" or 96.0" length
<b>Circuits</b>	2 x ±10 A · 48 VDC 1 x ±10 A · 48 VDC + D+/D-
<b>Notes</b>	The supply connectors, plugs and further fixture accessories must be ordered separately.  Any 90° connector must be ordered separately to ensure electric continuity in the corners.  Light points cannot be installed in the corners.

Fixture Dimensions



## ORDERING INFORMATION

Example: **BUT048T05B10071.US**. Power Supplies ordered separately.

BUT048T05	B1	0		1	US
<b>Model No.</b>	<b>Finish</b>		<b>Length</b>		
BUT048T05	B1 - Black	0	07 - 48.0" 08 - 96.0"	1	US

Job Name/Date:

Fixture Type Designation:

## SUGGESTED POWER SUPPLIES

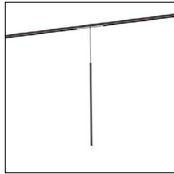
For other power supply options consult factory.

Part Number	Description	Input/Output	# of Fixtures
<a href="#">PPLT00577</a>	Non-Dim	120-277VAC to 48VDC, 96W, Class 2	Any combo of fixtures may be used as long as the total wattage does not exceed 77W

## For use with these track heads, pendants and linear fixtures



L1 Nano



The Tube Nano



U1 Nano



X1 Nano



Y1 Nano



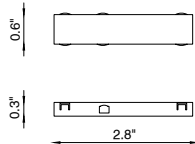
Z1 Nano

## ACCESSORIES



### BUT048A00095B1

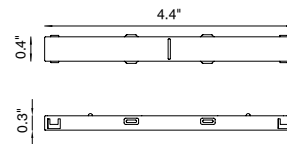
Power Head



### BUT048A00064B1

Through Joint

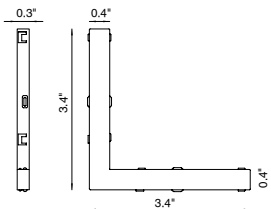
Used to connect two tracks and to guarantee the supply of current.



### BUT048A00065B1

90° Corner Joint

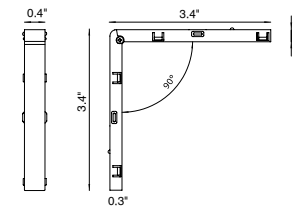
Used to connect two tracks joined at 90° and to guarantee that current reaches the corners. Light points cannot be installed in the corners.



### BUT048A00066B1

Ceiling-Wall 90° Corner Joint

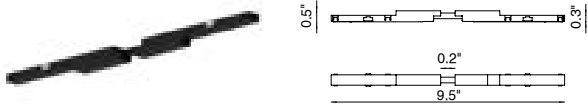
Non-polarized angle for ceiling-to-wall connection, used to connect two tracks joined to 90°. Light points cannot be installed in the corners.



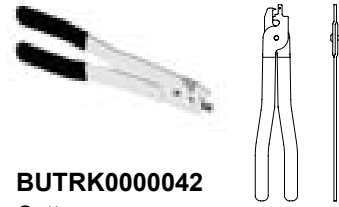
Job Name/Date:

Fixture Type Designation:

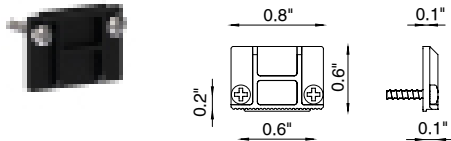
## ACCESSORIES (continued)



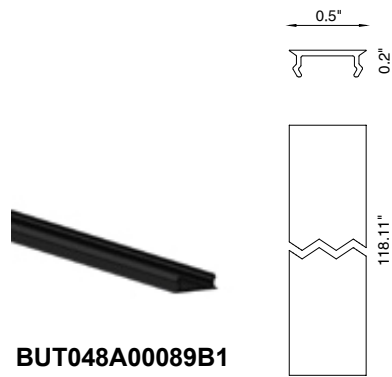
**BUT048A00067B1**  
Flexible Joint



**BUTRK0000042**  
Cutter



**BUT048A00062B1**  
Closure Plug



**BUT048A00089B1**  
Closing Cover

Cover installable at the bottom between the various spotlights, to hide the inside of the track and to allow aesthetic continuity.

Job Name/Date:

Fixture Type Designation: