

DAN M-120

Dan is an IP66-rated stainless steel bollard with clean lines and harmonious proportions that is perfectly suited for illuminating gardens and paths. It is available in 2 heights (23.6" or 35.4"), 2 pole head diameters (3.5" or 4.7"), and 3 standard Hard Coat Treatment finishes. Dan M-90 is the 7W, 4.7" pole head version. Flange with anchor bolts available for installation in concrete. Dark Sky compliant.

TECHNICAL DATA

Wattage / Input	7W (DAN M120)
Power Supply	Integral 120VAC
Dimming	On/Off Only
Construction	Body: AISI 316L Stainless Steel Lens: Black Silk-screened Extra-clear Tempered Glass 0.2" Thick
CCT	2200K, 2700K, 3000K, 4000K
CRI	>80
BUG Rating	B0-U1-G0 (3000K)
Delivered Lumens	750 lm (M120 version - 3000K) Dark Sky compliant
Efficacy	107 lm/W (M120 version - 3000K)
Optics	21°, 45°, 65°
Lumen Maintenance	100,000 hrs L80, B10 (Ta 25°C)
Hard Coat Finishes	Inox Natural, Inox Graphite, Inox Bronze
Fixture Dimensions	M120: 4.72" x 7.01" x 23.62" or 35.73" h
IP Rating	IP66
Impact Resistance	IK08
Warranty	10 Years Against Corrosion 5 Years on Electrical Components

Hard Coating Treatment is the surface treatment of all the products by Stral Lighting. It is not a skin of color, but instead is a process that allows for the color to be absorbed all the way through. If a product is scratched, the color beneath is the same as the color on the surface. It guarantees a high superficial resistance to corrosion and atmospheric agents, as well as making the products anti-fingerprint and anti-stain. Available in three finishes Inox Natural, Inox Graphite and Inox Bronze.

ORDERING INFORMATION

Example: SPT6022349B.US. Accessories sold separately.

SPT6022					.US
Model No.	CCT	Optics	Height	Finishes	
SPT6022 (M120)	1 - 2200K 2 - 2700K 3 - 3000K 4 - 4000K	2 - 21° 4 - 45° 6 - 65°	6 - 23.6" height 9 - 35.4" height	N - Inox Natural G - Inox Graphite B - Inox Bronze	.US

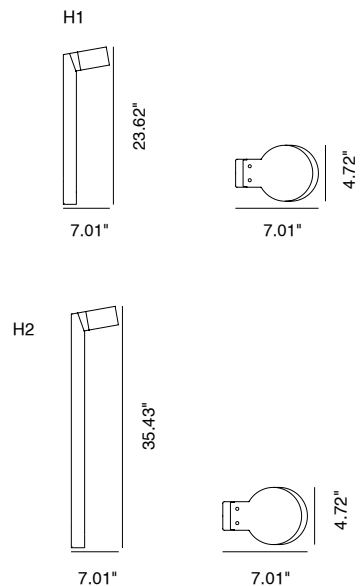
Job Name/Date:

Fixture Type Designation:



M120

Fixture Dimensions



FINISHES



Inox Natural

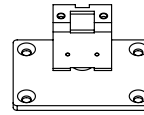


Inox Graphite

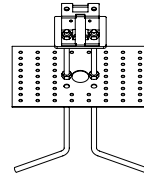


Inox Bronze

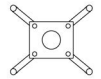
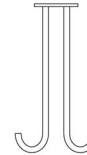
ACCESSORIES



PT64010
Anchor Flange
4.13" w x 2.76" h
(REQUIRED)



PT64000
Anchor Bolts Kit
(Set of 4)
6.30" w x 10.63" h x 3.94" l
(REQUIRED)



1.97"

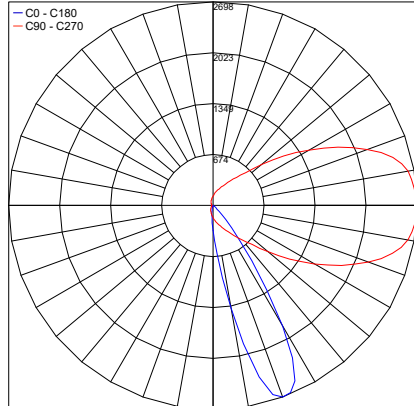
2.36"

PHOTOMETRIC DATA

Note: All photometric data is 3000K

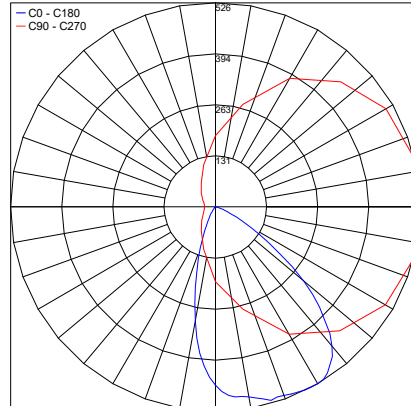
24 inch version

Maximum Candela = 2697.9



PHOTOMETRIC FILENAME : DAN M-120 - 24IN 7W 30K 21° - PT6022326N.IES

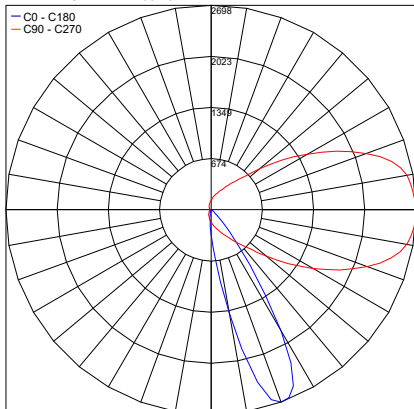
Maximum Candela = 525.6



PHOTOMETRIC FILENAME : DAN M-120 - 24IN 7W 30K 65° - PT6022366N.IES

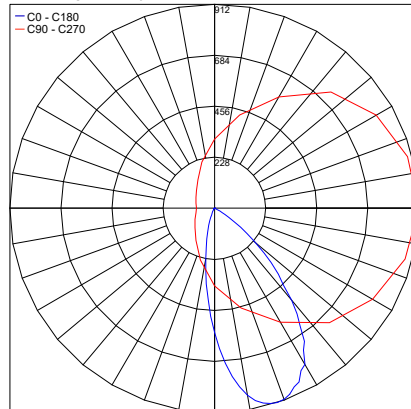
35 inch version

Maximum Candela = 2697.9



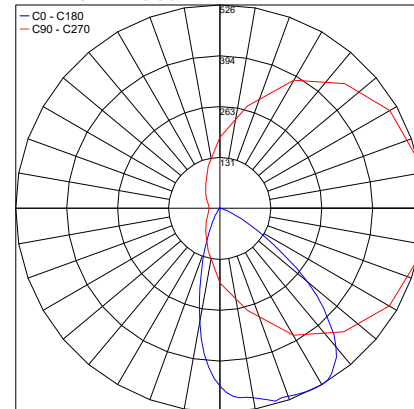
PHOTOMETRIC FILENAME : DAN M-120 - 35IN 7W 30K 21° - PT6022329N.IES

Maximum Candela = 912.4



PHOTOMETRIC FILENAME : DAN M-120 - 35IN 7W 30K 45° - PT6022349N.IES

Maximum Candela = 525.6



PHOTOMETRIC FILENAME : DAN M-120 - 35IN 7W 30K 65° - PT6022369N.IES

Job Name/Date:

Fixture Type Designation: