

KALAN is a linear, wall or ceiling mounted LED luminaire made of Accoya®, a sustainable, highly durable wood treated with Acetylation treatment. It is available in 3 lengths with 4 different cover options in 3000K and diffused indirect optics. 25 year warranty on Accoya® Wood - 5 year warranty on lighting element.



COVER 1



COVER 2



COVER 3



COVER 4

Fixture Dimensions - See Page 2

TECHNICAL DATA

Wattage	10W (KALAN WALL 550) 15W (KALAN WALL 900) 20W (KALAN WALL 1450)
Power Supply	Remote 24VDC, not included. See page 2.
Construction	Body: Accoya® Wood and Inox AISI 316L Lens: Opal Polycarbonate
CCT	3000K (other colors on request)
BUG Rating	B0-U3-G0
CRI	>90
Delivered Lumens	210 lm (KALAN WALL 550) 310 lm (KALAN WALL 900) 476 lm (KALAN WALL 1450)
Efficacy	21 lm/W (KALAN WALL 550) 20.7 lm/W (KALAN WALL 900) 23.8 lm/W (KALAN WALL 1450)
Optics	Diffuse (Indirect)
Finishes	Accoya® - Acetylation treatment
Fixture Dimensions	5.0" h x 1.2" w x 21.7" h (KALAN WALL 550) 5.0" h x 1.2" w x 35.4" h (KALAN WALL 900) 5.0" h x 1.2" w x 57.1" h (KALAN WALL 1450)
Lumen Maintenance	L70 >50,000hrs (Ta 40°C)
Color Consistency	3-Step MacAdam
IP Rating	IP65
Impact Resistance	IK08

ORDERING INFORMATION

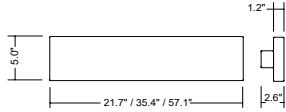
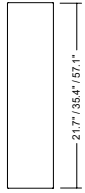
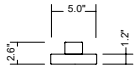
Example: LNKLL5POSDHB7Z3.US. Accessories / Power Supplies ordered separately.

LNKL		D	HB7Z3	US
Model No.	Size	Optics	Power	
LNKL	L5POS - 21.7" version (550) L9POS - 35.4" version (900) L0POS - 57.1" version (1450)	D - Diffuse	HB7Z3	US

Job Name/Date:

Fixture Type Designation:

FIXTURE DIMENSIONS



CEILING VERSION

SUGGESTED POWER SUPPLIES

24VDC

Part Number	Description	Input/Output	# of Fixtures		
			10W	15W	20W
PPLT00680	ELV / TRIAC & 0-10V Dimming (100 to 0%)	120-277VAC to 24VDC, 20W, Class 2, IP66	1-1	1-1	—
PPLT00056	Non-Dim	120-277VAC to 24VDC, 26W, Class 2, IP66	1-2	1-1	1-1
PPLT00586	Non-Dim	120-277VAC to 24VDC, 40W, Class 2	1-3	1-2	1-1
PPLT00157	Non-Dim	120VAC to 24VDC, 60W, Class 2	1-4	1-3	1-2
PPLT00627	ELV / TRIAC & 0-10V Dimming (100 to 0%)	120-277VAC to 24VDC, 96W, Class 2, IP67	1-7	1-5	1-3
PPLT00158	Non-Dim	120VAC to 24VDC, 100W, Class 2	1-8	1-5	1-4
PPLT00543	0-10V Dimming to 15% (-40°C / -40°F cold weather start)	120-277VAC to 24VDC, 100W, Class 2	1-8	1-5	1-4

Suggested Lutron Compatible

Part Number	Option	Lutron SKU	Dim Range	Description	Input/Output	# of Fixtures		
						10W	15W	20W
PPLT00273	L3DAE / L3DA3W	L3DA	100%-1%	Hi-Lume™ 1% EcoSystem™ or 1% 3-Wire LED Driver	120-277VAC to 24VDC, 40W, Class 2	1-3	1-2	1-1
PPLT00530	L3DAE / L3DA3W	L3DA	100%-1%	Hi-Lume™ 1% EcoSystem™ or 1% 3-Wire LED Driver	120-277VAC to 24VDC, 96W, Class 2	1-7	1-5	1-3

For other power supply options consult factory.

ACCESSORIES - Installation

(included)

Single Connection IP68

(not included)

- 00COVKL05.01** - Cover 1
- 00COVKL05.02** - Cover 2
- 00COVKL05.03** - Cover 3
- 00COVKL05.03** - Cover 4

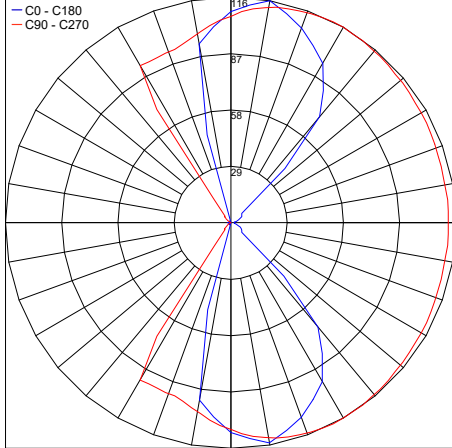
Job Name/Date:

Fixture Type Designation:

PHOTOMETRIC DATA

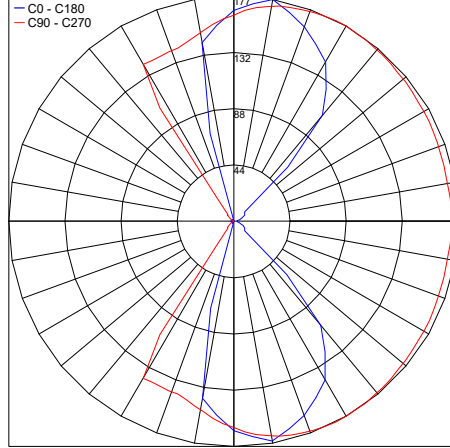
Note: All photometric data is 3000K

Maximum Candela = 115.6



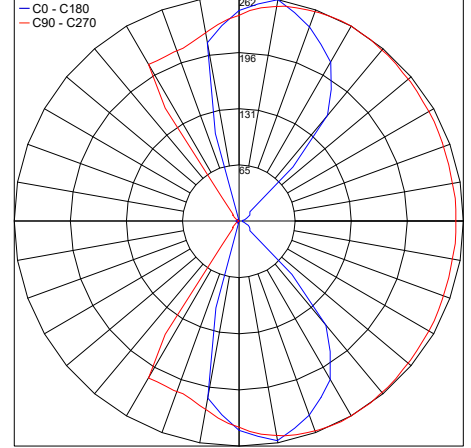
PHOTOMETRIC FILENAME : KALAN 550 - KLL9POSDHB103.IES

Maximum Candela = 176.6



PHOTOMETRIC FILENAME : KALAN 900 - KLL9POSDHB103.IES

Maximum Candela = 261.9



PHOTOMETRIC FILENAME : KALAN 1450 - KLL9POSDHB103.IES

Job Name/Date:

Fixture Type Designation: