

KALAN is a linear, wall or ceiling mounted LED luminaire made of Accoya®, a sustainable, highly durable wood treated with Acetylation treatment. It is available in 3 lengths with 4 different cover options in 3000K and diffused indirect optics. 25 year warranty on Accoya® Wood - 5 year warranty on lighting element.



TECHNICAL DATA

Wattage	10W (KALAN WALL 550) 15W (KALAN WALL 900) 20W (KALAN WALL 1450)
Power Supply	Remote 24VDC, not included. See page 2.
Construction	Body: Accoya® Wood and Inox AISI 316L Lens: Opal Polycarbonate
CCT	3000K (other colors on request)
BUG Rating	B0-U3-G0
CRI	>90
Delivered Lumens	210 lm (KALAN WALL 550) 310 lm (KALAN WALL 900) 476 lm (KALAN WALL 1450)
Efficacy	21 lm/W (KALAN WALL 550) 20.7 lm/W (KALAN WALL 900) 23.8 lm/W (KALAN WALL 1450)
Optics	Diffuse (Indirect)
Finishes	Accoya® - Acetylation treatment
Fixture Dimensions	5.0" h x 1.2" w x 21.7" h (KALAN WALL 550) 5.0" h x 1.2" w x 35.4" h (KALAN WALL 900) 5.0" h x 1.2" w x 57.1" h (KALAN WALL 1450)
Lumen Maintenance	L70 >50,000hrs (Ta 40°C)
Color Consistency	3-Step MacAdam
IP Rating	IP65
Impact Resistance	IK08



COVER 1



COVER 2



COVER 3



COVER 4

Fixture Dimensions - See Page 2

ORDERING INFORMATION

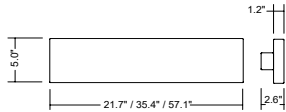
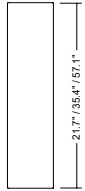
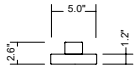
Example: LNKLL5POSDHB7Z3.US. Accessories / Power Supplies ordered separately.

LNKL		D	HB7Z3	US
Model No.	Size	Optics	Power	
LNKL	L5POS - 21.7" version (550) L9POS - 35.4" version (900) L0POS - 57.1" version (1450)	D - Diffuse	HB7Z3	US

Job Name/Date:

Fixture Type Designation:

FIXTURE DIMENSIONS



CEILING VERSION

SUGGESTED POWER SUPPLIES

24VDC

Part Number	Description	Input/Output	# of Fixtures		
			10W	15W	20W
PPLT00680	ELV / TRIAC & 0-10V Dimming (100 to 0%)	120-277VAC to 24VDC, 20W, Class 2, IP66	1-1	1-1	—
PPLT00056	Non-Dim	120-277VAC to 24VDC, 26W, Class 2, IP66	1-2	1-1	1-1
PPLT00586	Non-Dim	120-277VAC to 24VDC, 40W, Class 2	1-3	1-2	1-1
PPLT00709	ELV / TRIAC & 0-10V Dimming	120-277VAC to 24VDC, 96W, Class 2, DAMP	1-7	1-5	1-3
PPLT00543	0-10V Dimming to 15% (-40°C / -40°F cold weather start)	120-277VAC to 24VDC, 100W, Class 2	1-8	1-5	1-4

Suggested Lutron Compatible

Part Number	Option	Lutron SKU	Dim Range	Description	Input/Output	# of Fixtures		
						10W	15W	20W
PPLT00273	L3DAE / L3DA3W	L3DA	100%-1%	Hi-Lume™ 1% EcoSystem™ or 1% 3-Wire LED Driver	120-277VAC to 24VDC, 40W, Class 2	1-3	1-2	1-1
PPLT00530	L3DAE / L3DA3W	L3DA	100%-1%	Hi-Lume™ 1% EcoSystem™ or 1% 3-Wire LED Driver	120-277VAC to 24VDC, 96W, Class 2	1-7	1-5	1-3

For other power supply options consult factory.

ACCESSORIES - Installation

(included)

Single Connection IP68

(not included)

- 00COVKL05.01 - Cover 1
- 00COVKL05.02 - Cover 2
- 00COVKL05.03 - Cover 3
- 00COVKL05.03 - Cover 4

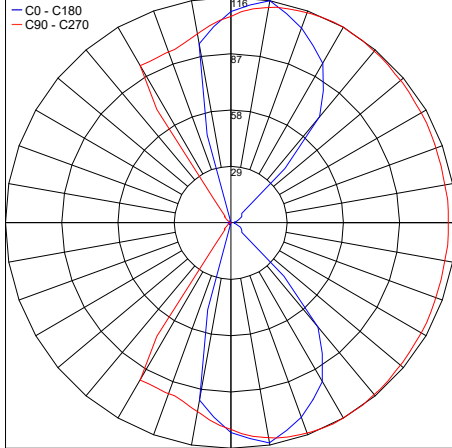
Job Name/Date:

Fixture Type Designation:

PHOTOMETRIC DATA

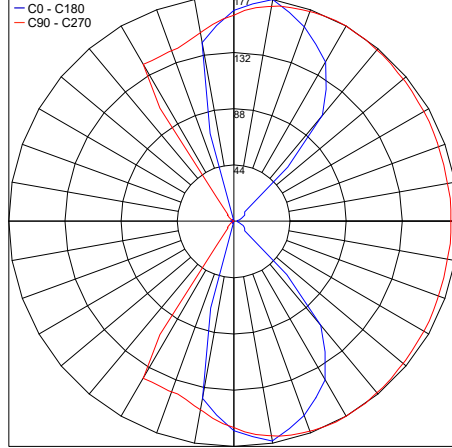
Note: All photometric data is 3000K

Maximum Candela = 115.6



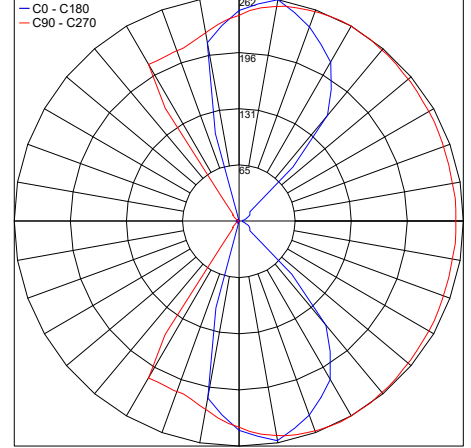
PHOTOMETRIC FILENAME : KALAN 550 - KLL9POSDHB103.IES

Maximum Candela = 176.6



PHOTOMETRIC FILENAME : KALAN 900 - KLL9POSDHB103.IES

Maximum Candela = 261.9



PHOTOMETRIC FILENAME : KALAN 1450 - KLL9POSDHB103.IES

Job Name/Date:

Fixture Type Designation: