

KALAN is a linear, wall or ceiling mounted LED luminaire made of Accoya®, a sustainable, highly durable wood treated with Acetylation treatment. It is available in 3 lengths with 4 different cover options in 3000K and diffused indirect optics. 25 year warranty on Accoya® Wood - 5 year warranty on lighting element.



## TECHNICAL DATA

<b>Wattage</b>	10W (KALAN WALL 550) 15W (KALAN WALL 900) 20W (KALAN WALL 1450)
<b>Power Supply</b>	Remote 24VDC, not included. See page 2.
<b>Construction</b>	Body: Accoya® Wood and Inox AISI 316L Lens: Opal Polycarbonate
<b>CCT</b>	3000K (other colors on request)
<b>BUG Rating</b>	B0-U3-G0
<b>CRI</b>	>90
<b>Delivered Lumens</b>	210 lm (KALAN WALL 550) 310 lm (KALAN WALL 900) 476 lm (KALAN WALL 1450)
<b>Efficacy</b>	21 lm/W (KALAN WALL 550) 20.7 lm/W (KALAN WALL 900) 23.8 lm/W (KALAN WALL 1450)
<b>Optics</b>	Diffuse (Indirect)
<b>Finishes</b>	Accoya® - Acetylation treatment
<b>Fixture Dimensions</b>	5.0" h x 1.2" w x 21.7" h (KALAN WALL 550) 5.0" h x 1.2" w x 35.4" h (KALAN WALL 900) 5.0" h x 1.2" w x 57.1" h (KALAN WALL 1450)
<b>Lumen Maintenance</b>	L70 >50,000hrs (Ta 40°C)
<b>Color Consistency</b>	3-Step MacAdam
<b>IP Rating</b>	IP65
<b>Impact Resistance</b>	IK08



COVER 1



COVER 2



COVER 3



COVER 4

Fixture Dimensions - See Page 2

## ORDERING INFORMATION

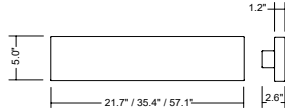
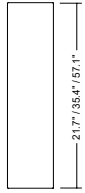
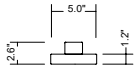
Example: LNKLL5POSDHB7Z3.US. Accessories / Power Supplies ordered separately.

<b>LNKL</b>		<b>D</b>	<b>HB7Z3</b>	<b>US</b>
<b>Model No.</b>	<b>Size</b>	<b>Optics</b>	<b>Power</b>	
<b>LNKL</b>	<b>L5POS</b> - 21.7" version (550) <b>L9POS</b> - 35.4" version (900) <b>L0POS</b> - 57.1" version (1450)	<b>D</b> - Diffuse	<b>HB7Z3</b>	<b>US</b>

Job Name/Date:

Fixture Type Designation:

## FIXTURE DIMENSIONS



CEILING VERSION

## SUGGESTED POWER SUPPLIES

24VDC

Part Number	Description	Input/Output	# of Fixtures		
			10W	15W	20W
<a href="#">PPLT00680</a>	ELV / TRIAC & 0-10V Dimming (100 to 0%)	120-277VAC to 24VDC, 20W, Class 2, IP66	1-1	1-1	—
<a href="#">PPLT00586</a>	Non-Dim	120-277VAC to 24VDC, 40W, Class 2	1-3	1-2	1-1
<a href="#">PPLT00709</a>	ELV / TRIAC & 0-10V Dimming	120-277VAC to 24VDC, 96W, Class 2, DAMP	1-7	1-5	1-3
<a href="#">PPLT00543</a>	0-10V Dimming to 15% (-40°C / -40°F cold weather start)	120-277VAC to 24VDC, 100W, Class 2	1-8	1-5	1-4

## Suggested Lutron Compatible

Part Number	Option	Lutron SKU	Dim Range	Description	Input/Output	# of Fixtures		
						10W	15W	20W
<a href="#">PPLT00273</a>	L3DAE / L3DA3W	L3DA	100%-1%	Hi-Lume™ 1% EcoSystem™ or 1% 3-Wire LED Driver	120-277VAC to 24VDC, 40W, Class 2	1-3	1-2	1-1
<a href="#">PPLT00530</a>	L3DAE / L3DA3W	L3DA	100%-1%	Hi-Lume™ 1% EcoSystem™ or 1% 3-Wire LED Driver	120-277VAC to 24VDC, 96W, Class 2	1-7	1-5	1-3

For other power supply options consult factory.

## ACCESSORIES - Installation

(included)

### Single Connection IP68

(not included)

- 00COVKL05.01** - Cover 1
- 00COVKL05.02** - Cover 2
- 00COVKL05.03** - Cover 3
- 00COVKL05.03** - Cover 4

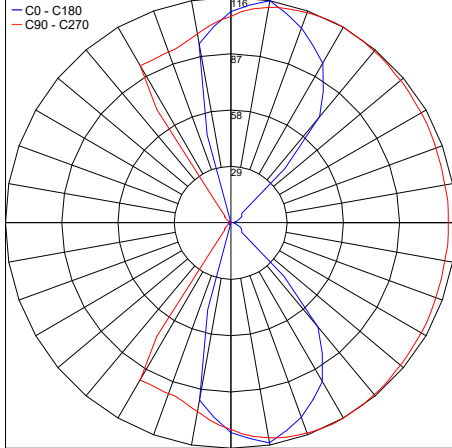
Job Name/Date:

Fixture Type Designation:

**PHOTOMETRIC DATA**

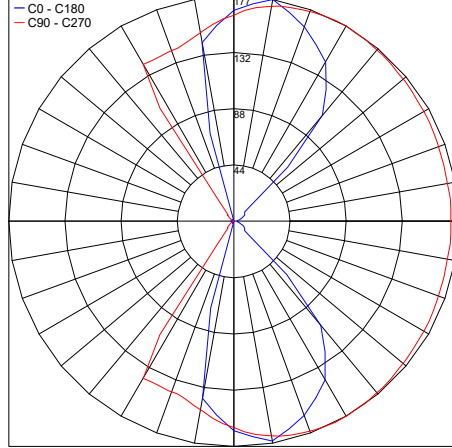
*Note: All photometric data is 3000K*

Maximum Candela = 115.6



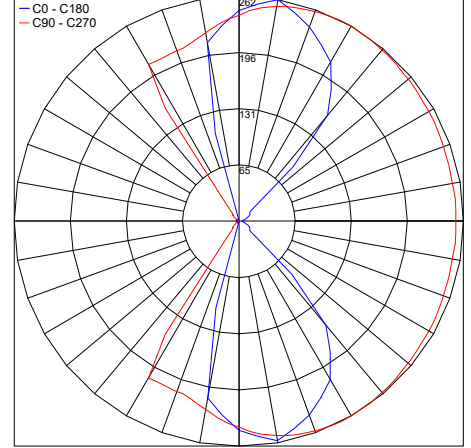
PHOTOMETRIC FILENAME : KALAN 550 - KLL9POSDHB103.IES

Maximum Candela = 176.6



PHOTOMETRIC FILENAME : KALAN 900 - KLL9POSDHB103.IES

Maximum Candela = 261.9



PHOTOMETRIC FILENAME : KALAN 1450 - KLL9POSDHB103.IES

Job Name/Date:

Fixture Type Designation: