



INSTRUCTIONS PERTAINING TO RISK OF FIRE OR INJURY TO PERSONS. READ ALL INSTRUCTIONS. IMPORTANT SAFETY INSTRUCTIONS. SAVE THESE INSTRUCTIONS.

DANGER - RISK OF SHOCK - DISCONNECT POWER BEFORE INSTALLATION! Please read all instructions before installation.

- Keep these instructions for future reference.
- Must be installed by a qualified electrician in accordance with national and local standards. Designplan is not responsible for fixtures installed without regard to these standards.
- Unauthorized alterations or tampering of product voids warranty.
- The main power connection must be in accordance with local electrical codes.
- Suitable for INDOOR applications.
- DO NOT INSTALL INSULATION WITHIN 3.0" (76 mm) OF ANY PART OF THE LUMINAIRE.



IP65 IP66

ATTENTION: **For In-Grade** - It is the contractor's responsibility to seal the conduit with "Great Stuff" aerosol seal that prevents water and moisture penetration for ultimate protection. Contractor **MUST** use gel-filled wire nuts.

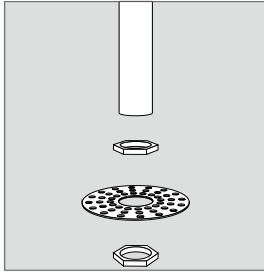
Maintenance

Scheduled maintenance must be carried out once a year on all lighting devices, regardless of appliance class and type of use. It must include the following operations:

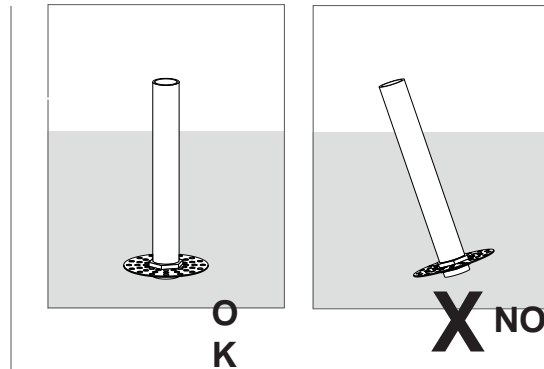
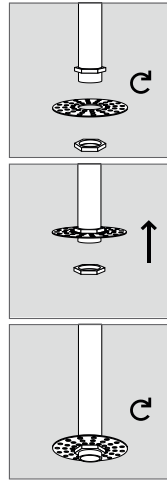
- Periodically clean fixtures to remove dirt from gratings and screw heads.
- Check tightness of screws on various parts of the device.
- Check that all cable glands and cables are intact and tight. Check that the glass or plastic lens is intact, and replace it if broken or damaged.
- The internal components such as the ballast, driver, washers and screws must not show clear signs of oxidation or rust. Clear traces of rust and oxidation will indicate the presence of water inside the device.
- In the case of damage, the components must be replaced by original components or spare parts.

INSTALLATION AND WIRING

DEVICE INSTALLATION:

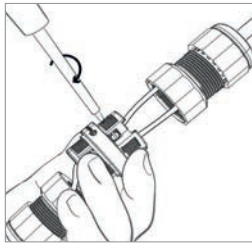


Screw the first nut into the lower part of the anchor bolt, insert the fixing plate and secure with the counter nut. Flush the anchor bolt by feeding the cable through the anchor bolt tube.

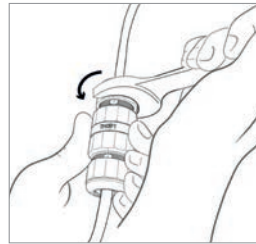


Check that everything is perpendicular to the spirit level, incorrect positioning would compromise the stability of the product

WIRING



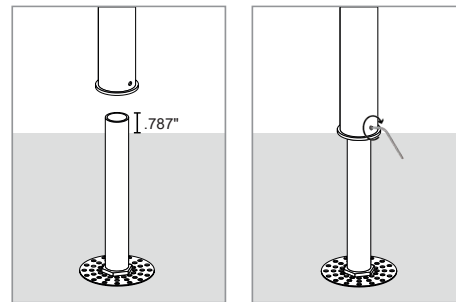
Fasten cables to the connector



Lock the fixing nuts

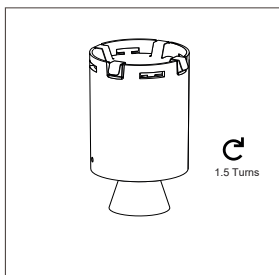
Suggested cable cross section - max. (flexible cable) 0,5 sq mm - 4,0 sq mm Cable diameter min. - max. 0.276" - 0.474" DIA.

DEVICE:

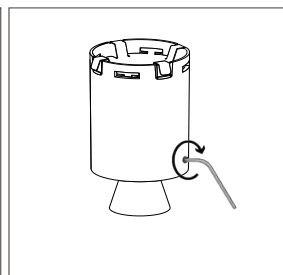


Screw the pole to the anchor bolt and secure with the grub screw

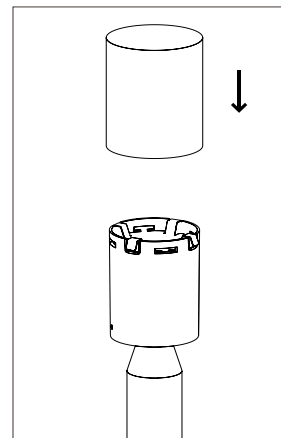
HEAD INSTALLATION



Screw, making 1.5 turns, the capsule already connected to the cable previously wired



Secure the capsule with the grain



Apply the spring head to the capsule