

Kran is an IP66-rated bollard made of stainless steel, available in versions with 1, 2, or 3 LEDs in the head, and 2 heights for each style. It is available in 3 color temperatures, 5 optics options, and 3 Hard Coat Treatment finishes. Kran M-03 is the triple LED version. Dark Sky compliant.

TECHNICAL DATA

Wattage	15W
Power Supply	Integral 120VAC
Dimming	On/Off Only
Construction	Body: AISI 316L Stainless Steel Lens: Flush Black Silk-screened Glass Extra-clear, Tempered, 0.16" Thick
CCT	2700K, 3000K, 4000K
CRI	>80
Delivered Lumens	550 lm per beam (3000K) Dark Sky compliant
Efficacy	110 lm/W per beam (3000K)
Optics	21°, 45°, 65°, Asymmetric, Road
BUG Rating	B0-U1-G0 (21° - 3000K) B1-U1-G0 (45°, 65° - 3000K)
Lumen Maintenance	100,000 hrs L80, B10 (Ta 25°C)
Hard Coat Finishes	Inox Natural, Inox Graphite, Inox Bronze
Fixture Dimensions	23.6" or 35.4" height M-03 head: 8.78" l x 2.36" h
IP Rating	IP66
Impact Resistance	IK08
Warranty	10 Years Against Corrosion 5 Years on Electrical Components

Hard Coating Treatment is the surface treatment of all the products by Stral Lighting. It is not a skin of color, but instead is a process that allows for the color to be absorbed all the way through. If a product is scratched, the color beneath is the same as the color on the surface. It guarantees a high superficial resistance to corrosion and atmospheric agents, as well as making the products anti-fingerprint and anti-stain. Available in three finishes Inox Natural, Inox Graphite and Inox Bronze.

ORDERING INFORMATION

Example: SPT6013366B.US. Accessories sold separately.

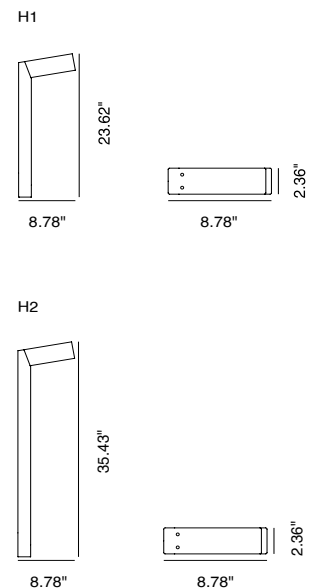
SPT6013					.US
Model No.	CCT	Optics	Height	Finishes	
SPT6013 (M-03)	2 - 2700K 3 - 3000K 4 - 4000K	2 - 21° 4 - 45° 6 - 65° 7 - Asymmetrical 8 - Road	6 - 23.6" 9 - 35.4"	N - Inox Natural G - Inox Graphite B - Inox Bronze	.US

Job Name/Date:

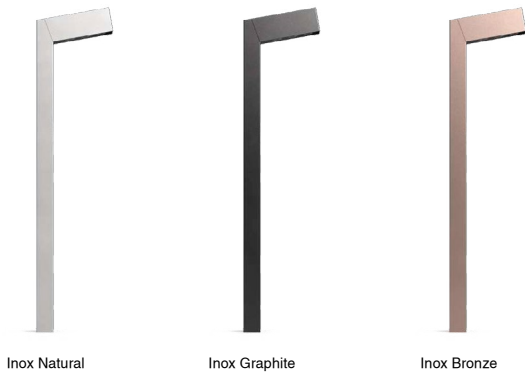
Fixture Type Designation:



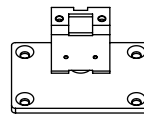
Fixture Dimensions



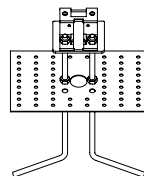
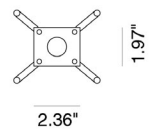
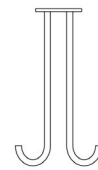
FINISHES



ACCESSORIES



PT64010
Anchor Flange
4.13" w x 2.76" h
(REQUIRED)



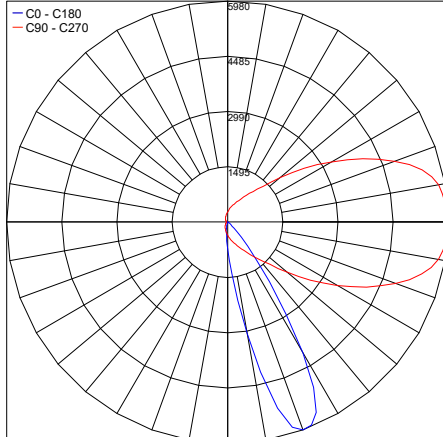
PT64000
Anchor Bolts Kit
(Set of 4 Bolts)
6.30" w x 10.63" h x 3.94" l
(REQUIRED)

PHOTOMETRIC DATA

Note: All photometry is 3000K

21°

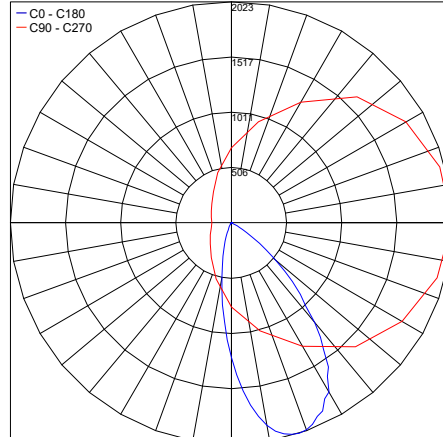
Maximum Candela = 5980.4



PHOTOMETRIC FILENAME : KRAN M-03 35IN 30K 21°- PT6013329N.IES

45°

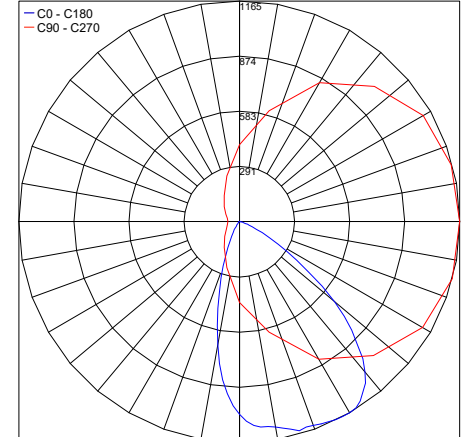
Maximum Candela = 2022.6



PHOTOMETRIC FILENAME : KRAN M-03 35IN 30K 45°- PT6013349N.IES

65°

Maximum Candela = 1165.0



PHOTOMETRIC FILENAME : KRAN M-03 35IN 30K 65°- PT6013369N.IES

Job Name/Date:

Fixture Type Designation: