

LOCH B-180

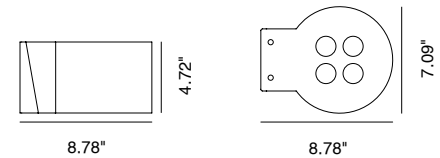
Loch is a circular, wall mounted, stainless steel LED luminaire that offers mono or bi-directional lighting for outdoor or indoor areas. The M (mono) and B (Bi) series are both available in 3 sizes, each with 3 optical options, 3 color temperatures, and 3 Hard Coat Treatment finishes.



TECHNICAL DATA

Wattage / Input	2x18W (B-180)
Power Supply	Remote 350mA Constant Current
Dimming	On / Off Only
Construction	Body: AISI 316L Stainless Steel Lens: Flush Black Silk-screened Glass Extra-clear, Tempered, 0.16" Thick
CCT	2700K, 3000K, 4000K
CRI	>85
Delivered Lumens	2200 lm per beam (B-180, 3000K)
Efficacy	122 lm/W per beam (B-180, 3000K)
Optics	21°, 45°, 65°
BUG Rating	—
Lumen Maintenance	100,000 hrs L80, B10 (Ta 25°C)
Hard Coat Finishes	Inox Natural, Inox Graphite, Inox Bronze
Fixture Dimensions	7.09" x 8.78" (B-180)
IP Rating	IP66
Impact Resistance	IK08
Warranty	10 Years Against Corrosion 5 Years on Electrical Components

Fixture Dimensions



Hard Coating Treatment is the surface treatment of all the products by Stral Lighting. It is not a skin of color, but instead is a process that allows for the color to be absorbed all the way through. If a product is scratched, the color beneath is the same as the color on the surface. It guarantees a high superficial resistance to corrosion and atmospheric agents, as well as making the products anti-fingerprint and anti-stain. Available in three finishes Inox Natural, Inox Graphite and Inox Bronze.

ORDERING INFORMATION

Example: SPT4016036B.US. Power Supplies / Accessories sold separately.

SPT40160				.US
Model No.	CCT	Optics	Finishes	
SPT40160 (B180)	2 - 2700K 3 - 3000K 4 - 4000K	2 - 21° 4 - 45° 6 - 65°	N - Inox Natural G - Inox Graphite B - Inox Bronze	.US

Job Name/Date:

Fixture Type Designation:

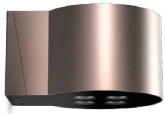
FINISHES



Inox Natural



Inox Graphite



Inox Bronze

B180

SUGGESTED POWER SUPPLIES

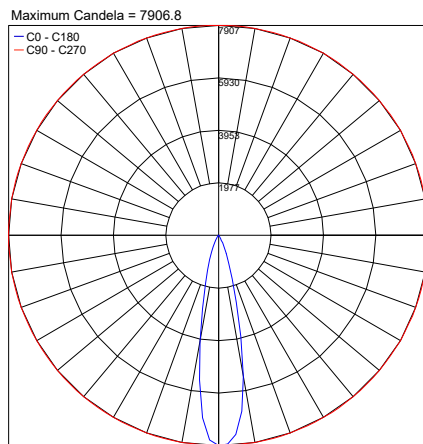
350mA (B90, B180) or 500mA (B120)

Part Number	Description	Input/Output	# of Fixtures		
			B90	B120	B180
PPLT00496	Phase Dim (120V only)	120VAC to 350mA or 500mA, 12W, Class 2, DAMP	1-1	—	—
PPLT00467-P	0-10V Dimming to 1.0%	120-277VAC to 350mA or 500mA, 50W, Class 2, DAMP	1-2	1-2	1-1
PPLT00538-P	0-10V Dimming to 0.1% (4 channels)	120-277VAC to 350mA or 500mA, 100W, Class 2	1-2 (1-8)	1-1 (1-4)	—

For other power supply options consult factory.

PHOTOMETRIC DATA

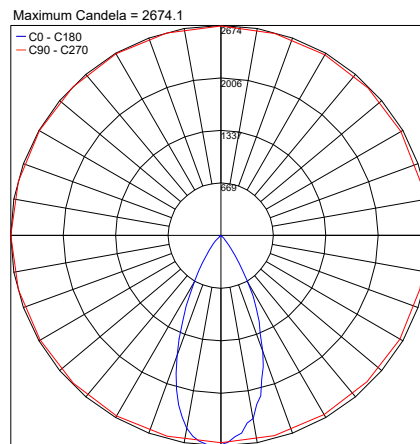
NOTE: All photometry is 3000K



PHOTOMETRIC FILENAME : PT4013032B.IES

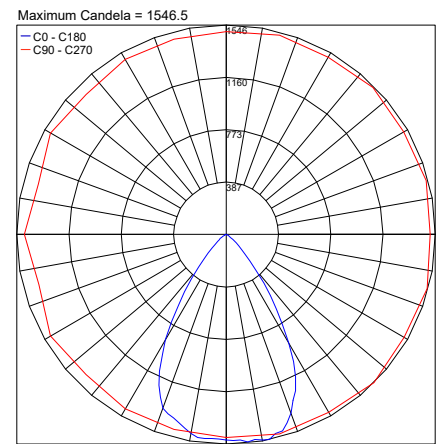
M180

21°



PHOTOMETRIC FILENAME : PT4013034B.IES

45°



PHOTOMETRIC FILENAME : PT4013036B.IES

65°

Job Name/Date:

Fixture Type Designation: