

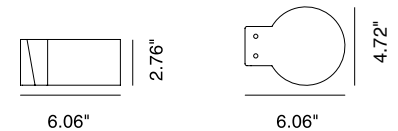
Loch is a circular, wall mounted, stainless steel LED luminaire that offers mono or bi-directional lighting for outdoor or indoor areas. The M (mono) and B (Bi) series are both available in 3 sizes, each with 3 optical options, 3 color temperatures, and 3 Hard Coat Treatment finishes. Loch M-120 is the 4.7" x 6.1" mono version.



TECHNICAL DATA

Wattage	7W (M-120)
Power Supply	Remote 350mA - See page 2
Dimming	Available - See page 2
Construction	Body: AISI 316L Stainless Steel Lens: Flush Black Silk-screened Glass Extra-clear, Tempered, 0.16" Thick
CCT	2700K, 3000K, 4000K
CRI	>80
Delivered Lumens	750 lm (M-120, 3000K)
Efficacy	107 lm/W (M-120, 3000K)
Optics	21°, 45°, 65°
BUG Rating	B1-U0-G0 (21°)
Lumen Maintenance	100,000 hrs L80, B10 (Ta 25°C)
Hard Coat Finishes	Inox Natural, Inox Graphite, Inox Bronze
Fixture Dimensions	4.72" x 6.06" (M-120, B-120)
IP Rating	IP66
Impact Resistance	IK08

Fixture Dimensions



Hard Coating Treatment is the surface treatment of all the products by Stral Lighting. Available in three finishes Inox Natural, Inox Graphite and Inox Bronze. It guarantees a high superficial resistance to corrosion and atmospheric agents, as well as making the products anti-fingerprint and anti-stain.

ORDERING INFORMATION

Example: SPT4012036B.US. Power Supplies / Accessories sold separately.

SPT40120				.US
Model No.	CCT	Optics	Finishes	
SPT40120 (M-120)	2 - 2700K 3 - 3000K 4 - 4000K	2 - 21° 4 - 45° 6 - 65°	N - Inox Natural G - Inox Graphite B - Inox Bronze	.US

Job Name/Date:

Fixture Type Designation:

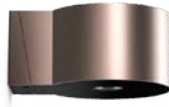
FINISHES



Inox Natural



Inox Graphite



Inox Bronze

SUGGESTED POWER SUPPLIES

500mA

Part Number	Description	Input/Output	# of Fixtures
PPLT00497	Phase Dim (120V only)	120VAC to 500mA, 12W, Class 2, DAMP	1-1
PPLT00465-P	0-10V Dimming to 1.0%	120-277VAC to 500mA, 20W, Class 2	1-2
PPLT00467-P	0-10V Dimming to 1.0%	120-277VAC to 500mA, 50W, Class 2, DAMP	1-4
PPLT00538-P	0-10V Dimming to 0.1%	120-277VAC to 500mA, 100W, Class 2	1-12

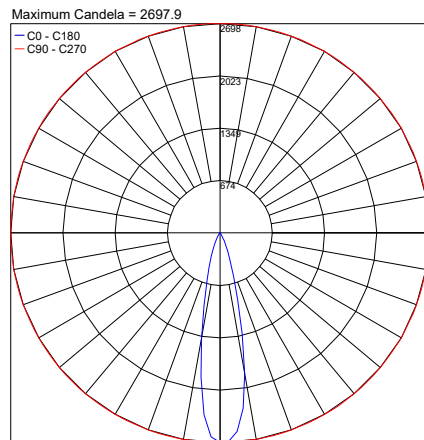
Suggested Lutron Compatible

Part Number	Option	Lutron SKU	Dim Range	Description	Input/Output	# of Fixtures
PPLT00195	L3DAE / L3DA3W	L3DA	100%-1%	Hi-Lume™ 1% EcoSystem™ or 1% 3-Wire LED Driver	120-277VAC to 500mA, 19W, Class 2	2-2
PPLT00676	PEQ0E	PEQ0	100%-1%	Hi-Lume™ Premier 0.1% EcoSystem™ LED Driver	120-277VAC to 500mA, 20W, Class 2	2-2

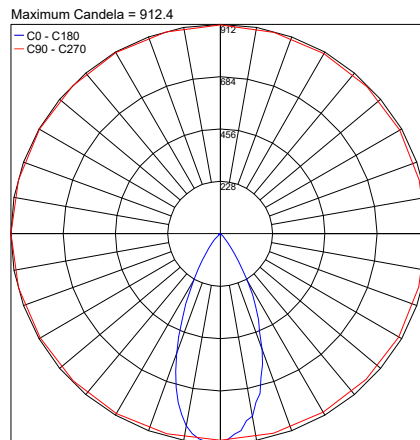
For other power supply options consult factory.

PHOTOMETRIC DATA

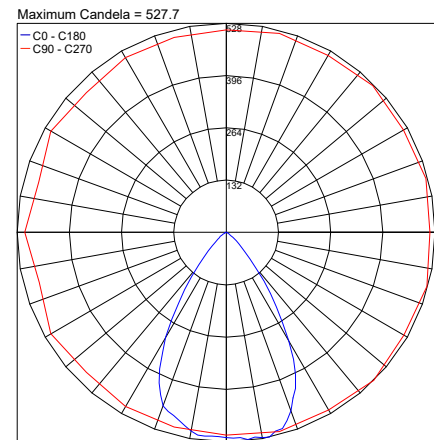
NOTE: All photometry is 3000K



21°



45°



65°

Job Name/Date:

Fixture Type Designation: