



INSTRUCTIONS PERTAINING TO RISK OF FIRE OR INJURY TO PERSONS. READ ALL INSTRUCTIONS. IMPORTANT SAFETY INSTRUCTIONS. SAVE THESE INSTRUCTIONS.

DANGER - RISK OF SHOCK - DISCONNECT POWER BEFORE INSTALLATION! Please read all instructions before installation.

- Keep these instructions for future reference.
- Must be installed by a qualified electrician in accordance with national and local standards. Designplan is not responsible for fixtures installed without regard to these standards.
- Unauthorized alterations or tampering of product voids warranty.
- The main power connection must be in accordance with local electrical codes.
- Suitable for OUTDOOR applications.



IP66 IP67 IK09

ATTENTION: **For In-Grade** - It is the contractor's responsibility to seal the conduit with "Great Stuff" aerosol seal that prevents water and moisture penetration for ultimate protection. Contractor **MUST** use gel-filled wire nuts.

Maintenance

Scheduled maintenance must be carried out once a year on all lighting devices, regardless of appliance class and type of use. It must include the following operations:

- Periodically clean fixtures to remove dirt from gratings and screw heads.
- Check tightness of screws on various parts of the device.
- Check that all cable glands and cables are intact and tight. Check that the glass or plastic lens is intact, and replace it if broken or damaged.
- The internal components such as the ballast, driver, washers and screws must not show clear signs of oxidation or rust. Clear traces of rust and oxidation will indicate the presence of water inside the device.
- In the case of damage, the components must be replaced by original components or spare parts.

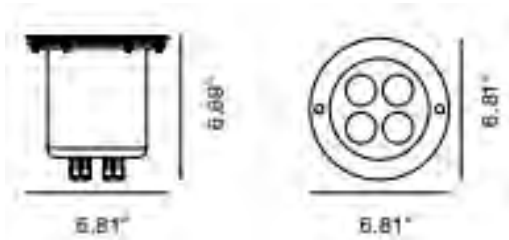
OLY N-180, N-240

12W/18W, 24W, INTEGRAL 120VAC

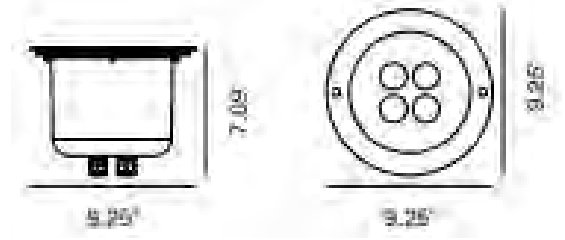
designplan®

installation instructions

FIXTURE DIMENSIONS

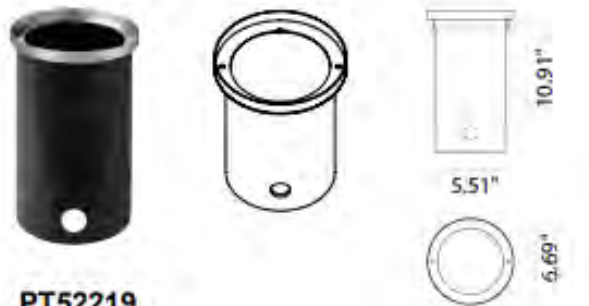


N-180



N-240

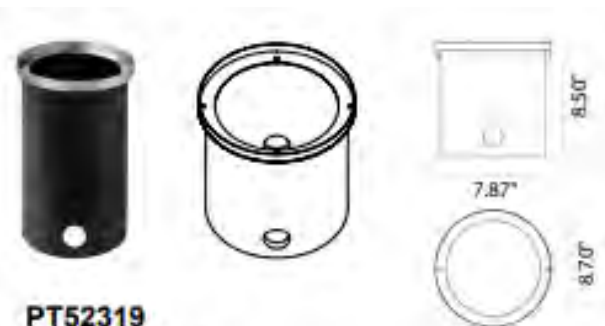
ACCESSORIES



PT52219

Outer Casing

6.69" w x 10.83" h



PT52319

Outer Casing

8.66" w x 8.46" h

OLY N-180, N-240

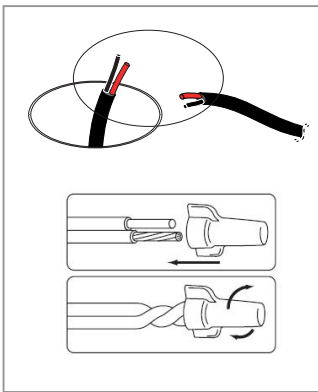
12W/18W, 24W, INTEGRAL 120VAC

designplan®

installation instructions



CABLE WIRING :



- Use gel-filled waterproof wire-nuts for wire connections.
- It is the contractor's responsibility to install Remote Driver in a suitable electrical enclosure.

Suggested cable cross-section - up to 2 x 0.75 mm² Cable external diameter min. - max. 0.189" - 0.236"

Important wiring note:

Version with integrated driver: connect the blue and brown wires directly to the 120 VAC mains supply.

Version with remote driver: connect the red (+) and black (-) wires to the remote driver at low voltage.

