

## Installation instructions TRIXIE ROUND



Recessed wall fitting.



Wall fitting



Pre-wired with approx 9.84" of cable.



Remote device required.



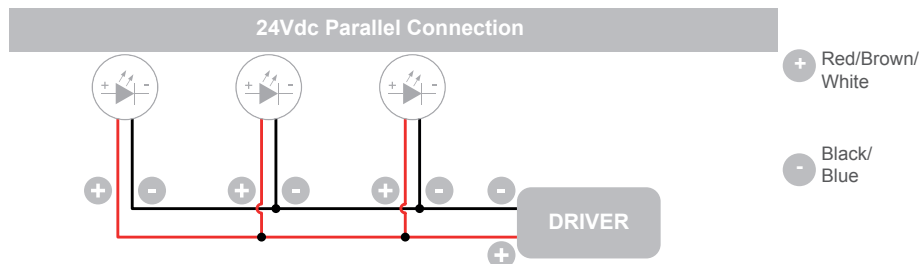
Rated IP65

### FAILURE TO FOLLOW THESE INSTRUCTIONS WILL VOID WARRANTY

RISK OF ELECTRICAL SHOCK. THIS EQUIPMENT IS TO BE INSTALLED BY A QUALIFIED ELECTRICIAN ONLY. MAKE CERTAIN ELECTRICAL SUPPLY CIRCUIT IS DE-ENERGIZED BEFORE BEGINNING INSTALLATION. CHECK FIXTURE LABEL FOR CORRECT VOLTAGE. READ ALL INSTRUCTIONS CAREFULLY.

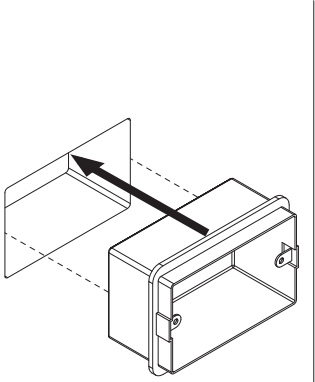
### INSTALLATION

1. The low voltage fixture is designed to be installed over a single gang switch box mounted sideways.
2. Make supply lead connections in the switch box mounted horizontally. CONNECT BLACK FIXTURE WIRE TO (-) NEGATIVE 24VDC WIRE AND CONNECT RED FIXTURE WIRE TO (+) POSITIVE 24VDC WIRE. Verify voltage at each fixture is 24V+/- 5%.
3. It is the contractor's responsibility to supply proper anchorage based on job conditions. It is also the contractor's responsibility to caulk the back of the fixture in order to satisfy wet label requirements.
4. The polished aluminum plate is supplied with double sided tape. Peel film off adhesive and install on fixture.



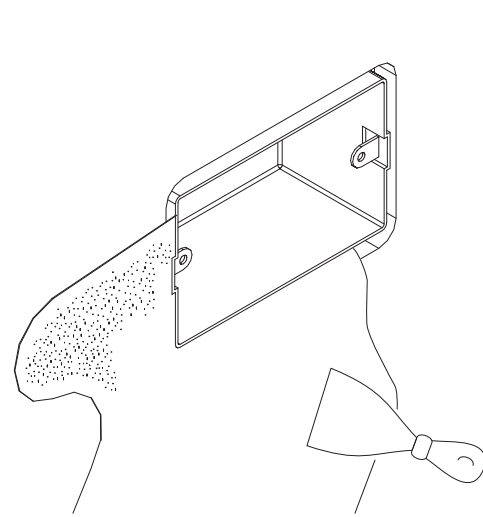
**The individual lamps must be connected in parallel. Only power up the system once all the lamps have being connected.**

## INSTALLATION ON WALL AND WIRING

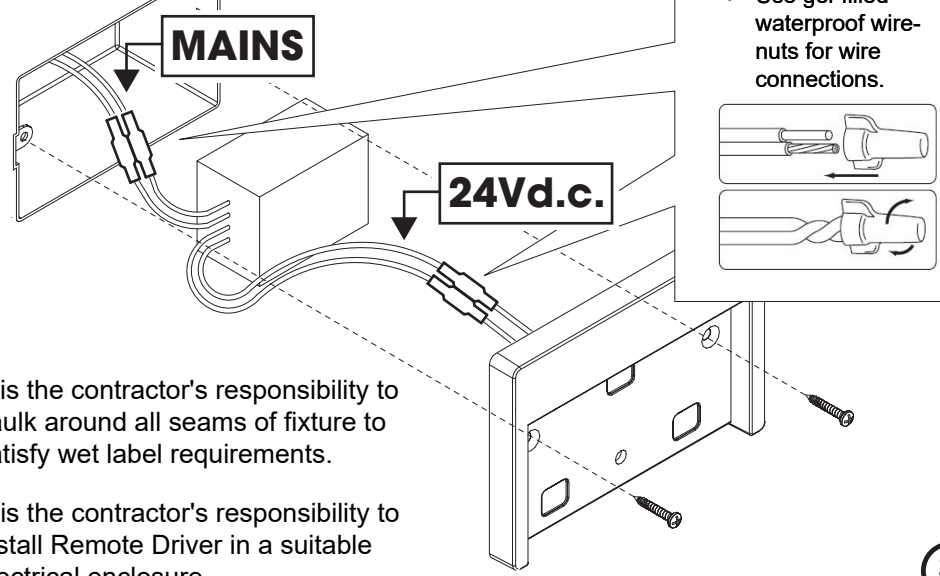


Single gang switch box by others

**1**



**2**



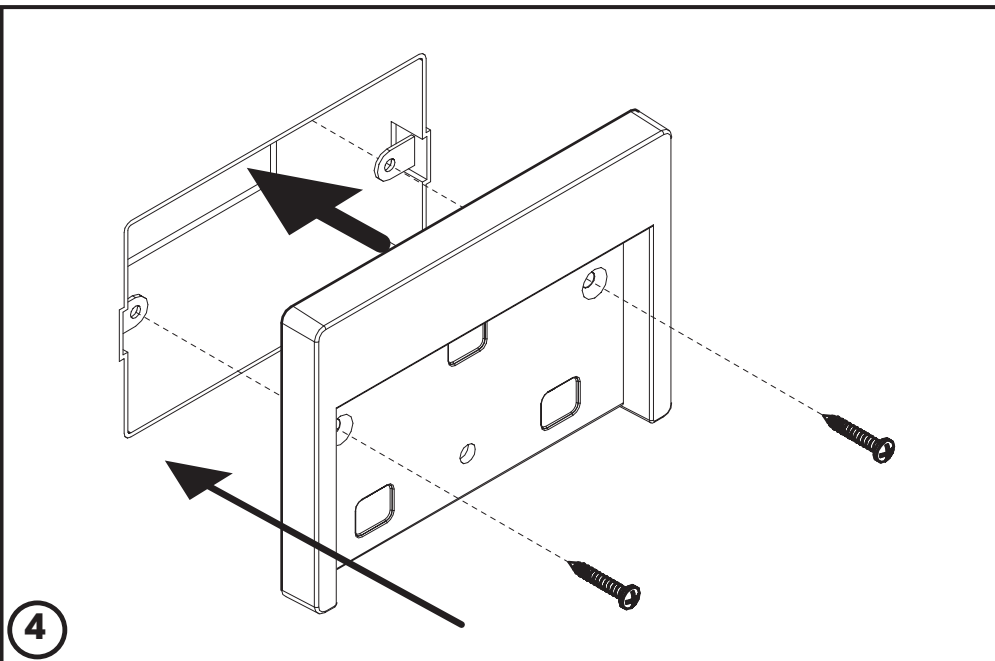
**MAINS**

**24Vd.c.**

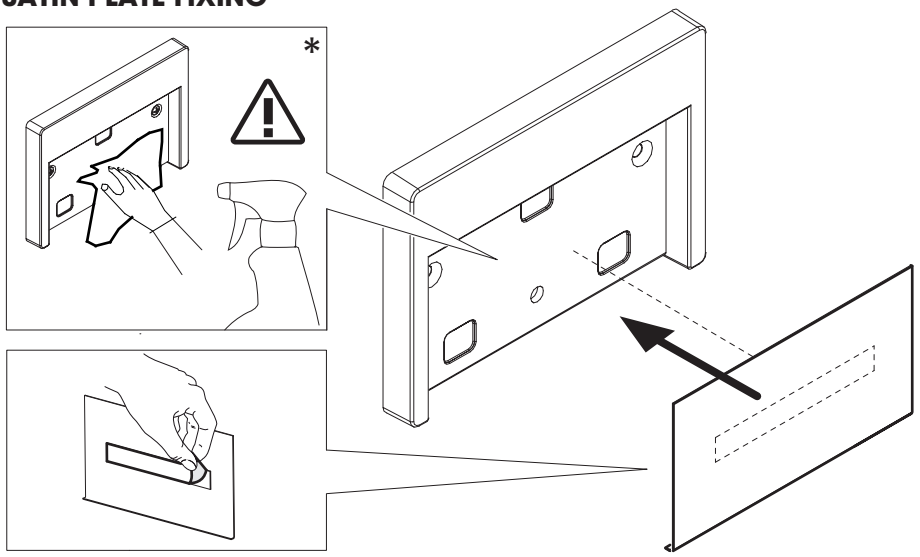
- Use gel-filled waterproof wire-nuts for wire connections.

**3**

- It is the contractor's responsibility to caulk around all seams of fixture to satisfy wet label requirements.
- It is the contractor's responsibility to install Remote Driver in a suitable electrical enclosure.

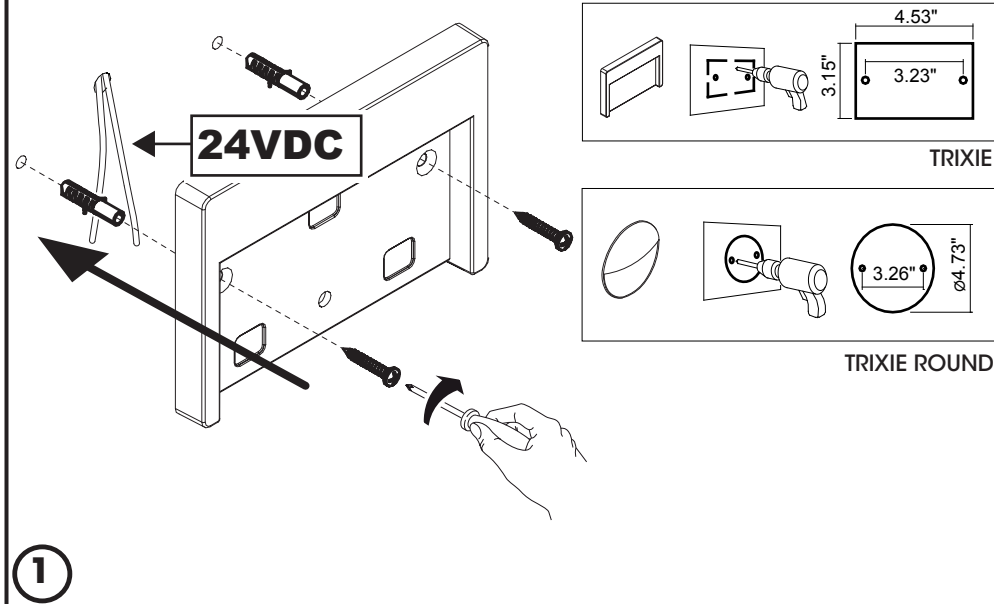


### SATIN PLATE FIXING

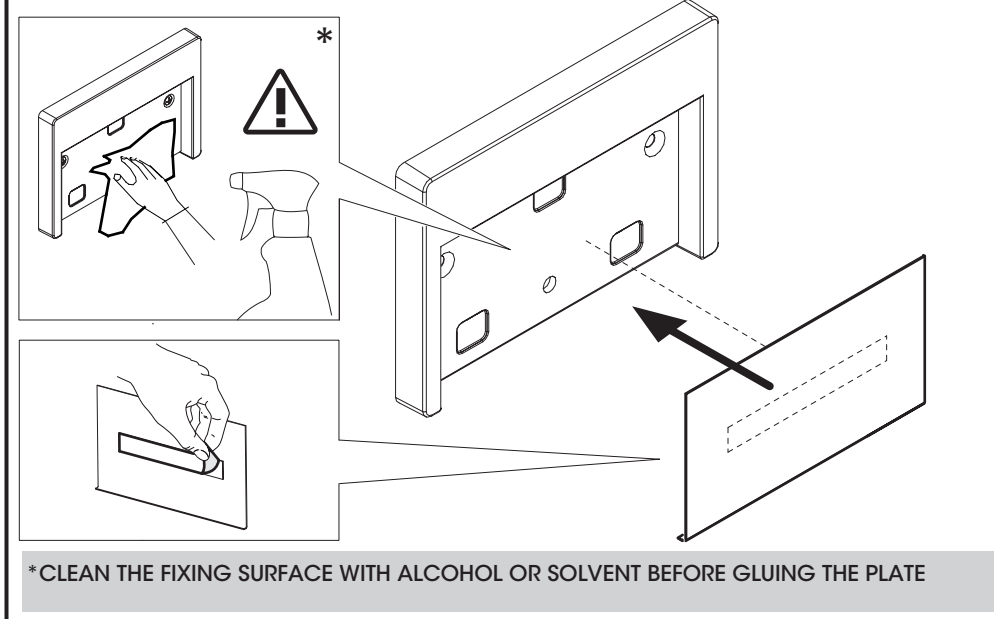


**\* CLEAN THE FIXING SURFACE WITH ALCOHOL OR SOLVENT BEFORE GLUING THE PLATE**

## INSTALLATION ON WALL



## SATIN PLATE FIXING



## WIRING 24VDC

- Use gel-filled waterproof wire-nuts for wire connections.
- It is the contractor's responsibility to caulk around all seams of fixture to satisfy wet label requirements.
- It is the contractor's responsibility to install Remote Driver in a suitable electrical enclosure.

