



INSTRUCTIONS PERTAINING TO RISK OF FIRE OR INJURY TO PERSONS. READ ALL INSTRUCTIONS. IMPORTANT SAFETY INSTRUCTIONS. SAVE THESE INSTRUCTIONS.

DANGER - RISK OF SHOCK - DISCONNECT POWER BEFORE INSTALLATION! Please read all instructions before installation.

- Keep these instructions for future reference.
- Must be installed by a qualified electrician in accordance with national and local standards. Designplan is not responsible for fixtures installed without regard to these standards.
- The main power connection must be in accordance with local electrical codes.
- Unauthorized alterations or tampering of product voids warranty.
- Suitable for OUTDOOR applications.



ETL Intertek IP65



ATTENTION: For In-Grade - It is the contractor's responsibility to seal the conduit with "Great Stuff" aerosol seal that prevents water and moisture penetration for ultimate protection. Contractor MUST use gel-filled wire nuts.

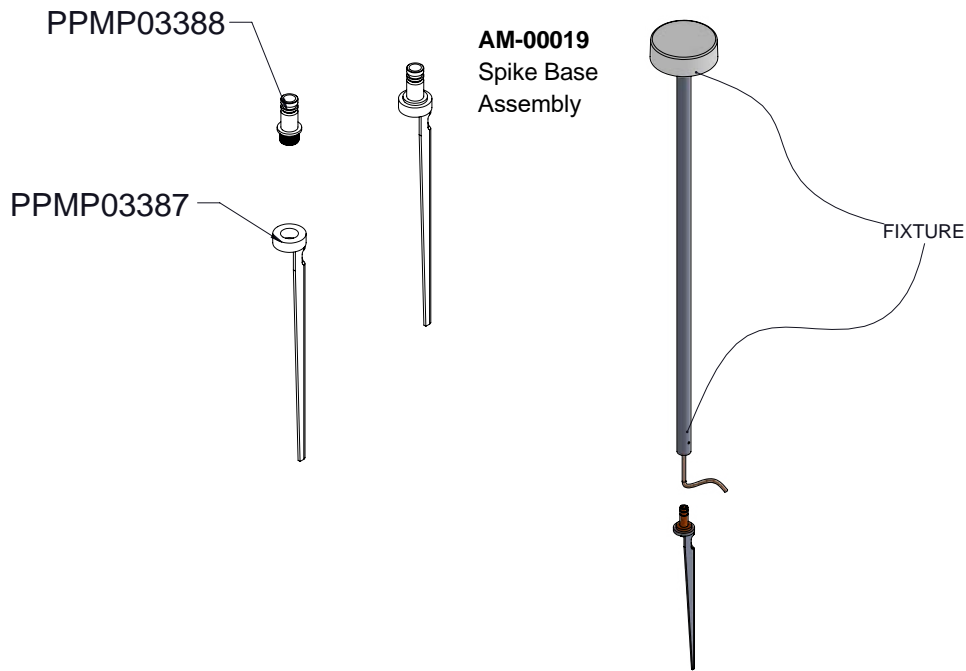
Maintenance

Scheduled maintenance must be carried out once a year on all lighting devices, regardless of appliance class and type of use. It must include the following operations:

- Periodically clean fixtures to remove dirt from gratings and screw heads.
- Check tightness of screws on various parts of the device.
- Check that all cable glands and cables are intact and tight. Check that the glass or plastic lens is intact, and replace it if broken or damaged.
- The internal components such as the ballast, driver, washers and screws must not show clear signs of oxidation or rust. Clear traces of rust and oxidation will indicate the presence of water inside the device.
- In the case of damage, the components must be replaced by original components or spare parts.

Fixture Installation- Spike Accessory

installation instructions



- It is the contractor's responsibility to install Remote Driver in a suitable electrical enclosure.
- It is the contractor's responsibility to caulk around all the edges between the fixture and the mounting surface, to satisfy wet label requirements.

- Screw in the spike accessory into the fixture if not done already.
- Place fixture with spike on the desired location of the ground.
- Make hole deep enough for spike to go through the ground and insert fixture into ground as shown.

Fixture Installation- Mounting Base Accessory

installation instructions

- Fixture comes fully assembled.
- Assemble mounting base and plate via (3) screws as shown.
- Attach mounting base assembly to base of fixture via (3) screws provided.

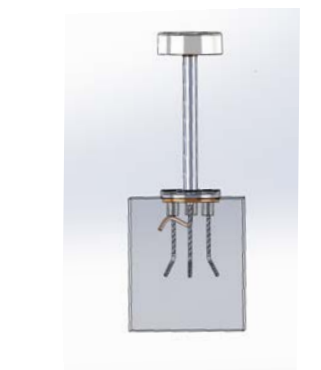
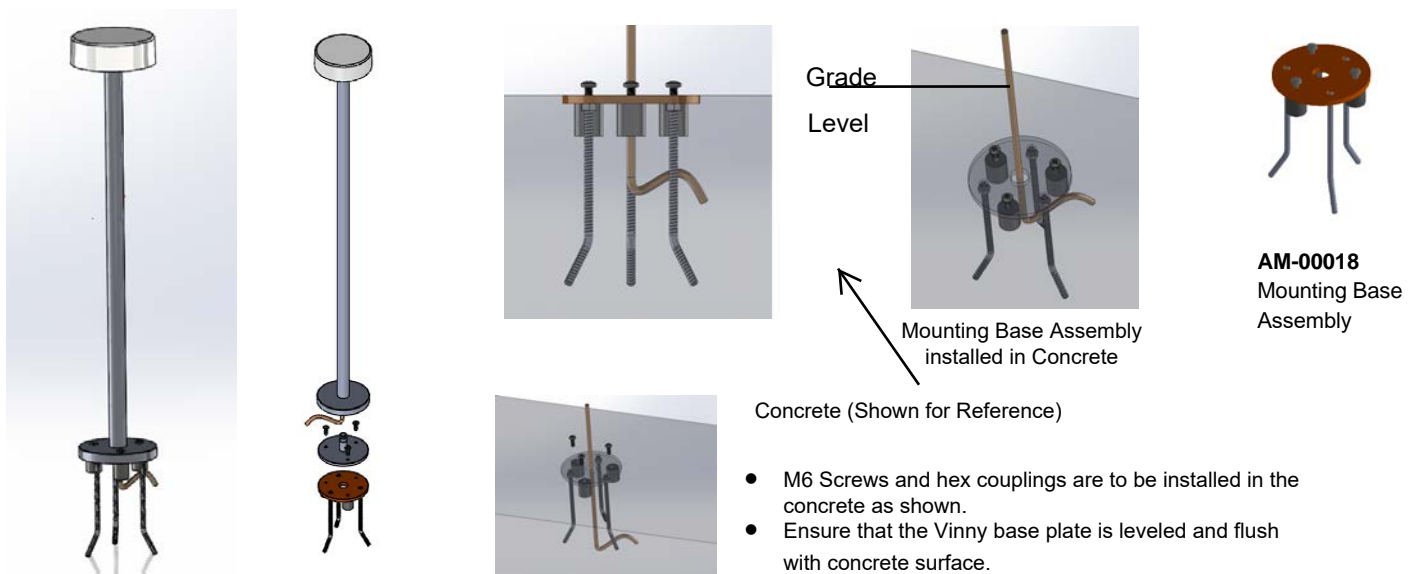
Install into desired location; Fixture may be installed in concrete pour or surface mounted on the ground as shown below.

Concrete Pour Application

- If doing concrete pour, assemble the mounting base assembly (AM-00018) with screws provided.
- Pour concrete and allow the base assembly to be cured, with three screws exposed. Once cured, the existing screws may be unscrewed from the base assembly and the base plate may be screwed into the base plate with the same screws going into the hex coupling nuts.
- The cover and rest of the fixture may be screwed into the base plate. Make proper wiring connections by feeding the cable through the stem and holes of the base plate and base plate assembly.

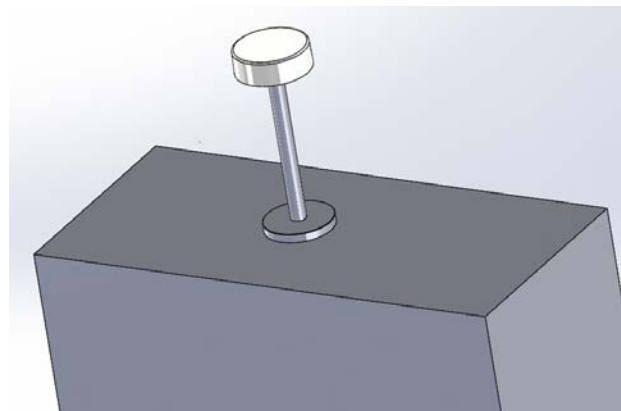
Surface Mounting Application

If mounting on the surface, the base plate may be screwed into the desired location and the fixture with the base cover may be screwed into the base plate.



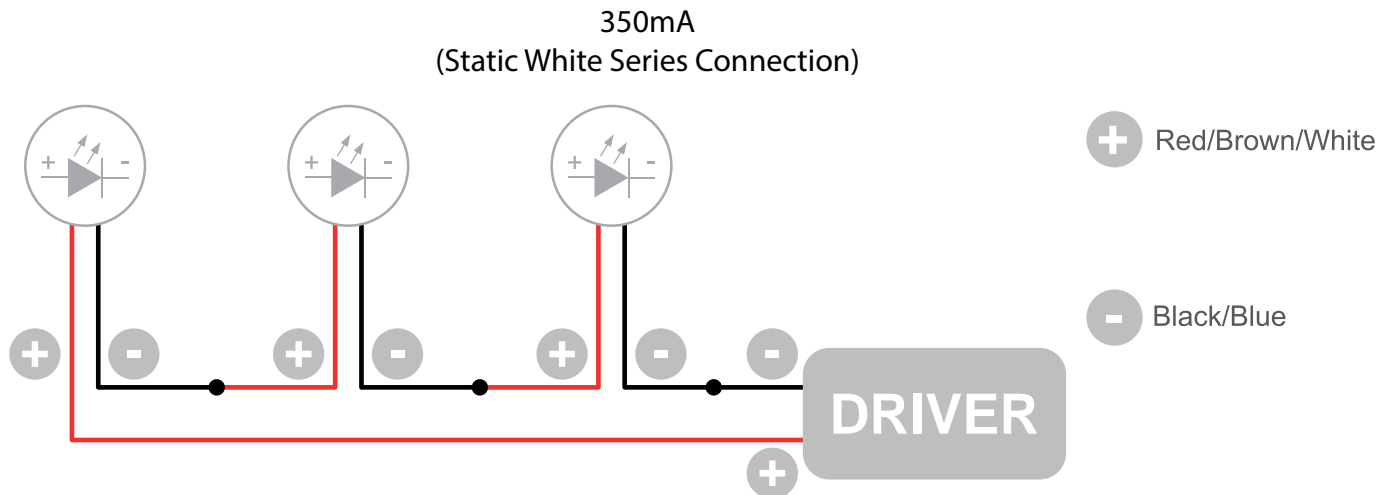
Concrete Pour Application


- It is contractor's responsibility to make proper arrangement for power supply wires.



Surface Mounted Application

Wiring Diagram



 The individual lamps must be connected in series.
Only power up the system once all the lamps have been connected.

- LED lights work at constant current. When choosing a power supply unit, you need to consider the current by which the LEDs are driven and their maximum power consumption.
- Only power up the system once all the lamps are connected. Connecting an individual lamp to an active power supply may cause the lamp to break due to over-voltage.
- The electronic power supply is constant current, so to a certain extent it automatically compensates the voltage drop associated with cable length; however, we advise not exceeding 100 feet.
- Lamps and power supply units must be installed in well-ventilated boxes or locations to allow a natural heat diffusion and avoid the devices overheating.
- On the power system, install a surge protection device to reduce the intensity of any voltage spikes to protect the lighting fixtures from the risk of damage.
- Fixture NOT suitable for covering with thermally insulating material.