

FOG 1 130

CEILING OR WALL (SURFACE OR RECESSED), PROJECTOR

datasheet

FOG 1 is a linear, outdoor ceiling or wall fixture that comes in surface-mounted, projector or recessed versions, each in 4 lengths offering high resistance to atmospheric elements and longevity. FOG 1 130 is the 5 foot length that comes as a surface-mounted projector, or wall/ceiling versions that are available in 5 standard finishes. It also comes in a recessed wall or ceiling version.



TECHNICAL DATA

| | |
|--------------------|---|
| Wattage | 2.5W |
| Power Supply | Remote 24VDC - See page 3 for options |
| Construction | Body: Extruded Aluminum EN AW6060 Lens: Opal Glass |
| CCT | 2700K, 3000K |
| BUG Rating | — |
| CRI | >90 |
| Delivered Lumens | 115 lm (3000K) |
| Efficacy | 29 lm/W |
| Optics | Diffuse |
| Finishes | 5 Standard, See Below |
| Fixture Dimensions | 5.1" l x 3.0" h x 1.9" w (Surface Mounted) 5.7" l x 4.3" h x 1.9" w (Projector) 5.3" l x 3.7" h x 4.3" w (Recessed) |
| Lumen Maintenance | L80, B15 >60,000hrs (Ta 40°C) |
| Color Consistency | 3-Step MacAdam |
| IP Rating | IP67 |
| Impact Resistance | IK10 |

Fixture Dimensions - see page 2

ORDERING INFORMATION

Example: LNFG1POSDHB7ZU.US. Power Supplies ordered separately.

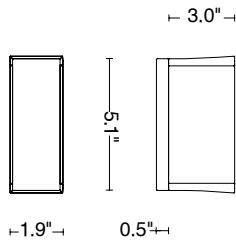
| | | | | | | |
|---------|--|-------------|------------------------|---------------------|---|----|
| LNFG | | D | | B7Z | | US |
| Model # | Size | Optics | CCT | Power | Finish | |
| LNFG | L1 POS - Ceiling / Wall L1 PR1 - Projector L1 ISO - Recessed <i>NOTE: Recessed version only available in white finish</i> | D - Diffuse | Y - 2700K H - 3000K | B7Z - Remote Driver | G - Black H - Gray L - Graphite U - White (Recessed version only in white) V - Oxide | US |

Job Name/Date:

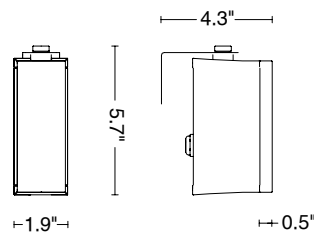
Fixture Type Designation:

FIXTURE DIMENSIONS

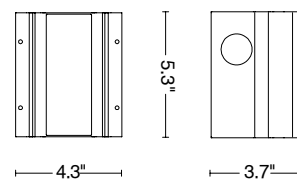
Ceiling or Wall



Projector



Recessed



ACCESSORIES - Included

CEILING / WALL LAMP

1.64' (0.5 m) length cable -05RN-F
Single connection IP68

PROJECTOR

3.28' (1 m) length cable -05RN-F
Single connection IP68
Fixing kit short (2.95")

RECESSED

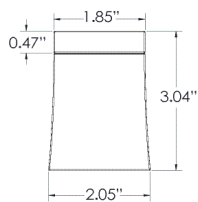
1.64' (0.5 m) length cable -05RN-F
Single connection IP68

Also Available

00CCL1.STD - Housing box

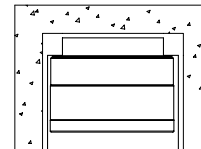
FIXTURE DIMENSIONS (additional)

Front View - Surface Mount

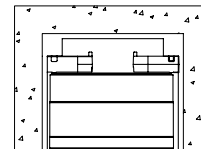


RECESSED INSTALLATION OPTIONS

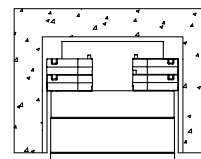
recessed installation



flush installation



protruding installation



Job Name/Date:

Fixture Type Designation:

SUGGESTED POWER SUPPLIES

24VDC

| Part Number | Description | Input/Output | # of Fixtures |
|---------------------------|---|--|---------------|
| PPLT00284 | Non-Dim | 120-277VAC to 24VDC, 100W, Class 2, DAMP | 1-32 |
| PPLT00543 | 0-10V Dimming to 15% (-40°C / -40°F cold weather start) | 120-277VAC to 24VDC, 100W, Class 2 | 4-32 |

Suggested Lutron Compatible - 2.5W (FOG 1 130)

| Part Number | Option | Lutron SKU | Dim Range | Description | Input/Output | # of Fixtures |
|---------------------------|----------------|------------|-----------|--|-----------------------------------|---------------|
| PPLT00530 | L3DAE / L3DA3W | L3DA | 100%-1% | Hi-Lume™ 1% EcoSystem™ or 1% 3-Wire LED Driver | 120-277VAC to 24VDC, 96W, Class 2 | 1-30 |

DRIVERS IN NEMA ENCLOSURE

Remote 24VDC - ELV / TRIAC / 0-10V



PPLT00715

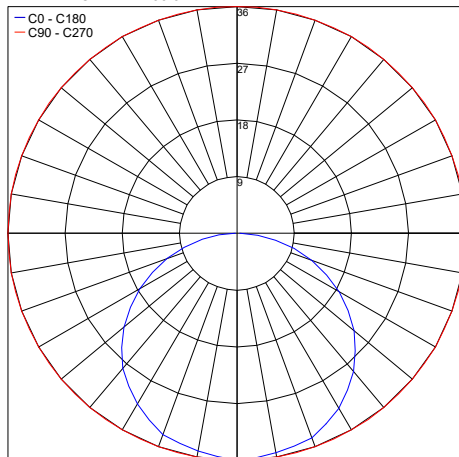
| Part Number | Description | Input/Output | # of Fixtures 2.5W |
|---------------------------|-------------------------------------|---|-----------------------|
| PPLT00715 | ELV / TRIAC / 0-10V Dimming to 0.1% | 120-277VAC to 24VDC, 96W, Class 2, WET/DAMP | 1-30 |

For other power supply options consult factory.

PHOTOMETRIC DATA

Note: All photometric data is 3000K

Maximum Candela = 35.5



PHOTOMETRIC FILENAME : FOG 1 130 - FGL1XXXDHB10X.LDT

Job Name/Date:

Fixture Type Designation: