

# FOG 1 130

## CEILING OR WALL (SURFACE OR RECESSED), PROJECTOR

FOG 1 is a linear, outdoor ceiling or wall fixture that comes in surface-mounted, projector or recessed versions, each in 4 lengths offering high resistance to atmospheric elements and longevity. FOG 1 130 is the 5 foot length that comes as a surface-mounted projector, or wall/ceiling versions that are available in 5 standard finishes. It also comes in a recessed wall or ceiling version.



Fixture Dimensions - see page 2

### TECHNICAL DATA

<b>Wattage</b>	2.5W
<b>Power Supply</b>	Remote 24VDC - See page 3 for options
<b>Construction</b>	Body: Extruded aluminum EN AW6060 Lens: Opal Glass
<b>CCT</b>	3000K (other colors on request)
<b>BUG Rating</b>	—
<b>CRI</b>	>90
<b>Delivered Lumens</b>	115 lm
<b>Efficacy</b>	29 lm/W
<b>Optics</b>	Diffuse
<b>Finishes</b>	5 Standard, See Below
<b>Fixture Dimensions</b>	5.1" l x 3.0" h x 1.9" w (Surface Mounted) 5.7" l x 4.3" h x 1.9" w (Projector) 5.3" l x 3.7" h x 4.3" w (Recessed)
<b>Lumen Maintenance</b>	L80-B15 >60,000 h (Ta 40°C)
<b>Color Consistency</b>	3-Step MacAdam
<b>IP Rating</b>	IP67
<b>Impact Resistance</b>	IK10

### ORDERING INFORMATION

Example: LNFG1POSDHB7ZU.US. Power Supplies ordered separately.

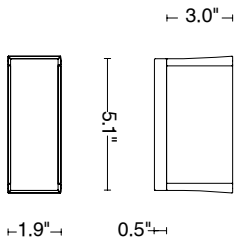
LNFG		D	HB7Z		US
Model No.	Size	Optics	Power	Finish	
LNFG	L1 POS - Ceiling / Wall L1 PR1 - Projector L1 ISO - Recessed	D - Diffuse	HB7Z - Remote Driver	G - Black H - Gray L - Graphite U - White (only color for recessed) V - Oxide	US

Job Name/Date:

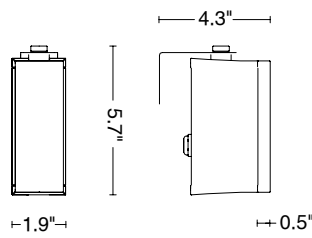
Fixture Type Designation:

### FIXTURE DIMENSIONS

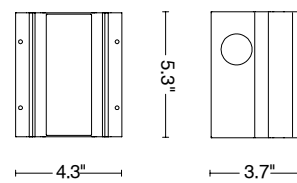
*Ceiling or Wall*



*Projector*



*Recessed*



### ACCESSORIES - Included

**CEILING / WALL LAMP**

**1.64' (0.5 m) length cable -05RN-F**  
**Single connection IP68**

**PROJECTOR**

**3.28' (1 m) length cable -05RN-F**  
**Single connection IP68**  
**Fixing kit short (2.95")**

**RECESSED**

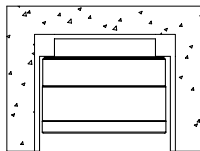
**1.64' (0.5 m) length cable -05RN-F**  
**Single connection IP68**

*Also Available*

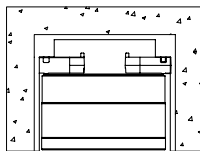
**00CCL1.STD - Housing box**

### RECESSED INSTALLATION OPTIONS

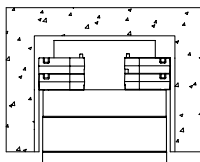
*recessed installation*



*flush installation*



*protruding installation*



Job Name/Date:

Fixture Type Designation:

### SUGGESTED POWER SUPPLIES

24VDC

Part Number	Description	Input/Output	# of Fixtures
<a href="#">PPLT00128</a>	Non-Dim	120VAC to 24VDC, 6W, Class 2, IP65	1-1
<a href="#">PPLT00689</a>	ELV / TRIAC & 0-10V Dimming (100 to 0%)	120-277VAC to 24VDC, 10W, Class 2, IP67	1-3
<a href="#">PPLT00684</a>	Non-Dim	120-277VAC to 24VDC, 20W, Class 2, IP67	1-6
<a href="#">PPLT00567</a>	Non-Dim	120-277VAC to 24VDC, 36W, Class 2	1-11
<a href="#">PPLT00691</a>	Non-Dim	120-277VAC to 24VDC, 60W, Class 2, IP67	1-19
<a href="#">PPLT00709</a>	ELV / TRIAC & 0-10V Dimming	120-277VAC to 24VDC, 96W, Class 2, DAMP	1-30
<a href="#">PPLT00543</a>	0-10V Dimming to 15% (-40°C / -40°F cold weather start)	120-277VAC to 24VDC, 100W, Class 2	1-32

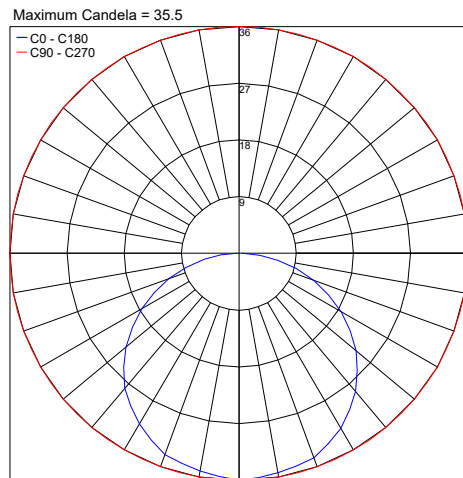
### Suggested Lutron Compatible - 2.5W (FOG 1 130)

Part Number	Option	Lutron SKU	Dim Range	Description	Input/Output	# of Fixtures
<a href="#">PPLT00273</a>	L3DAE / L3DA3W	L3DA	100%-1%	Hi-Lume™ 1% EcoSystem™ or 1% 3-Wire LED Driver	120-277VAC to 24VDC, 40W, Class 2	1-12
<a href="#">PPLT00530</a>	L3DAE / L3DA3W	L3DA	100%-1%	Hi-Lume™ 1% EcoSystem™ or 1% 3-Wire LED Driver	120-277VAC to 24VDC, 96W, Class 2	1-30

For other power supply options consult factory.

### PHOTOMETRIC DATA

Note: All photometric data is 3000K



Job Name/Date:

Fixture Type Designation: