

FOG 1 130

CEILING OR WALL (SURFACE OR RECESSED), PROJECTOR

FOG 1 is a linear, outdoor ceiling or wall fixture that comes in surface-mounted, projector or recessed versions, each in 4 lengths offering high resistance to atmospheric elements and longevity. FOG 1 130 is the 5 foot length that comes as a surface-mounted projector, or wall/ceiling versions that are available in 5 standard finishes. It also comes in a recessed wall or ceiling version.



TECHNICAL DATA

Wattage	2.5W
Power Supply	Remote 24VDC - See page 3 for options
Construction	Body: Extruded Aluminum EN AW6060 Lens: Opal Glass
CCT	2700K, 3000K
BUG Rating	—
CRI	>90
Delivered Lumens	115 lm (3000K)
Efficacy	29 lm/W
Optics	Diffuse
Finishes	5 Standard, See Below
Fixture Dimensions	5.1" l x 3.0" h x 1.9" w (Surface Mounted) 5.7" l x 4.3" h x 1.9" w (Projector) 5.3" l x 3.7" h x 4.3" w (Recessed)
Lumen Maintenance	L80, B15 >60,000hrs (Ta 40°C)
Color Consistency	3-Step MacAdam
IP Rating	IP67
Impact Resistance	IK10

Fixture Dimensions - see page 2

ORDERING INFORMATION

Example: LNFG1POSDHB7ZU.US. Power Supplies ordered separately.

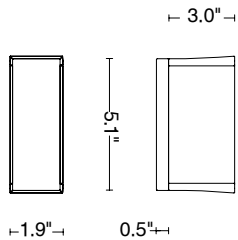
LNFG		D		B7Z		US
Model #	Size	Optics	CCT	Power	Finish	
LNFG	L1 POS - Ceiling / Wall L1 PR1 - Projector L1 ISO - Recessed <i>NOTE: Recessed version only available in white finish</i>	D - Diffuse	Y - 2700K H - 3000K	B7Z - Remote Driver	G - Black H - Gray L - Graphite U - White <i>(Recessed version only in white)</i> V - Oxide	US

Job Name/Date:

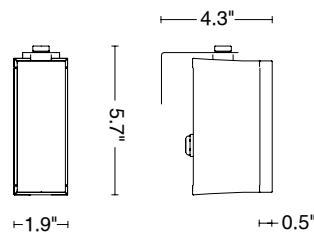
Fixture Type Designation:

FIXTURE DIMENSIONS

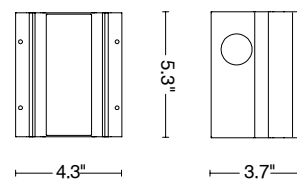
Ceiling or Wall



Projector



Recessed



ACCESSORIES - Included

CEILING / WALL LAMP

1.64' (0.5 m) length cable -05RN-F
Single connection IP68

PROJECTOR

3.28' (1 m) length cable -05RN-F
Single connection IP68
Fixing kit short (2.95")

RECESSED

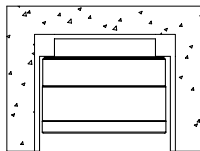
1.64' (0.5 m) length cable -05RN-F
Single connection IP68

Also Available

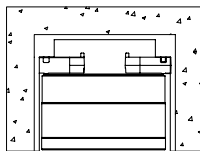
00CCL1.STD - Housing box

RECESSED INSTALLATION OPTIONS

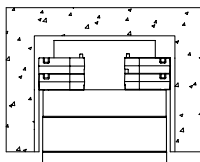
recessed installation



flush installation



protruding installation



Job Name/Date:

Fixture Type Designation:

SUGGESTED POWER SUPPLIES

24VDC

Part Number	Description	Input/Output	# of Fixtures
PPLT00128	Non-Dim	120VAC to 24VDC, 6W, Class 2, IP65	1-1
PPLT00689	ELV / TRIAC & 0-10V Dimming (100 to 0%)	120-277VAC to 24VDC, 10W, Class 2, IP67	1-3
PPLT00684	Non-Dim	120-277VAC to 24VDC, 20W, Class 2, IP67	1-6
PPLT00567	Non-Dim	120-277VAC to 24VDC, 36W, Class 2	1-11
PPLT00691	Non-Dim	120-277VAC to 24VDC, 60W, Class 2, IP67	1-19
PPLT00709	ELV / TRIAC & 0-10V Dimming	120-277VAC to 24VDC, 96W, Class 2, DAMP	1-30
PPLT00543	0-10V Dimming to 15% (-40°C / -40°F cold weather start)	120-277VAC to 24VDC, 100W, Class 2	1-32

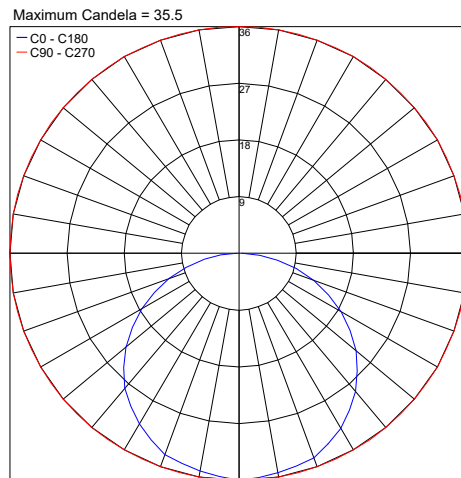
Suggested Lutron Compatible - 2.5W (FOG 1 130)

Part Number	Option	Lutron SKU	Dim Range	Description	Input/Output	# of Fixtures
PPLT00273	L3DAE / L3DA3W	L3DA	100%-1%	Hi-Lume™ 1% EcoSystem™ or 1% 3-Wire LED Driver	120-277VAC to 24VDC, 40W, Class 2	1-12
PPLT00530	L3DAE / L3DA3W	L3DA	100%-1%	Hi-Lume™ 1% EcoSystem™ or 1% 3-Wire LED Driver	120-277VAC to 24VDC, 96W, Class 2	1-30

For other power supply options consult factory.

PHOTOMETRIC DATA

Note: All photometric data is 3000K



PHOTOMETRIC FILENAME : FOG 1 130 - FGL1XXXDHB10X.LDT

Job Name/Date:

Fixture Type Designation: