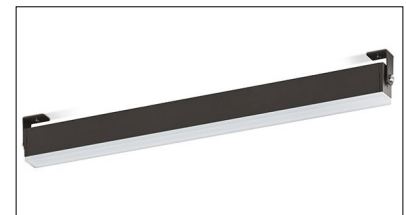
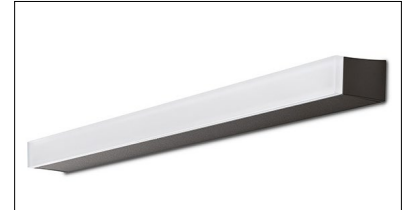
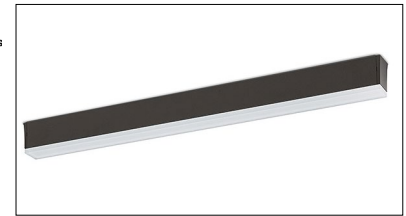


# FOG 1 900

## CEILING OR WALL (SURFACE OR RECESSED), PROJECTOR

datasheet

FOG 1 is a linear, outdoor ceiling or wall fixture that comes in surface-mounted, projector or recessed versions, each in 4 lengths offering high resistance to atmospheric elements and longevity. FOG 1 900 is the 35 foot length that comes as a surface-mounted projector, or wall/ceiling versions that are available in 5 standard finishes. It also comes in a recessed wall or ceiling version.



Fixture Dimensions - see page 2

### TECHNICAL DATA

Wattage	34W
Power Supply	Remote 24VDC - See page 3 for options
Construction	Body: Extruded Aluminum EN AW6060 Lens: Opal Glass
CCT	2700K, 3000K
BUG Rating	—
CRI	>90
Delivered Lumens	1294 lm (3000K)
Efficacy	34 lm/W
Optics	Diffuse
Finishes	5 Standard, See Below
Fixture Dimensions	34.7" l x 3.0" h x 1.9" w (Surface Mounted) 35.8" l x 4.3" h x 1.9" w (Projector) 35.2" l x 3.7" h x 4.3" w (Recessed)
Lumen Maintenance	L80, B15 >60.000 h (Ta 40°C)
Color Consistency	3-Step MacAdam
IP Rating	IP67
Impact Resistance	IK10

### ORDERING INFORMATION

Example: LNFG L9 POS D Y B7Z . US. Power Supplies ordered separately.

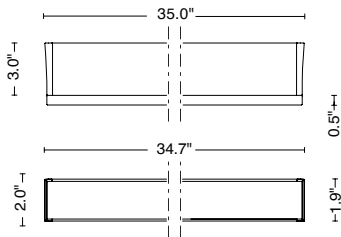
LNFG		D		B7Z		US
Model #	Size	Optics	CCT	Power	Finish	
LNFG	L9 POS - Ceiling / Wall L9 PR1 - Projector L9 ISO - Recessed <i>NOTE: Recessed version only available in white finish</i>	D - Diffuse	Y - 2700K H - 3000K	B7Z - Remote Driver	G - Black H - Gray L - Graphite U - White <i>(Recessed version only in white)</i> V - Oxide	US

Job Name/Date:

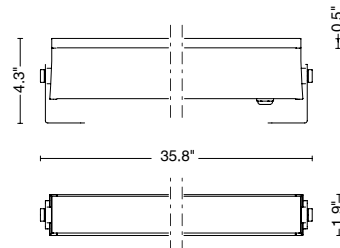
Fixture Type Designation:

### FIXTURE DIMENSIONS

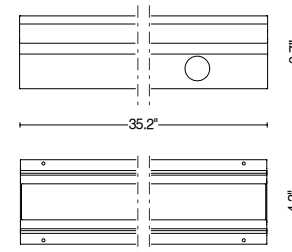
#### Ceiling or Wall



#### Projector



#### Recessed



### ACCESSORIES - Included

#### CEILING / WALL LAMP

**05RN-F** - 1.64' (0.5 m) length cable  
Single connection IP68

#### PROJECTOR

**05RN-F** - 3.28' (1 m) length cable  
Single connection IP68  
Fixing kit short (2.95")

**00KEYFGL.150\_** - Fixing kit medium (5.91")  
(available in fixture finishes - see page 1)

**00KEYFGL.250\_** - Fixing kit long (9.84")  
(available in fixture finishes - see page 1)

#### RECESSED

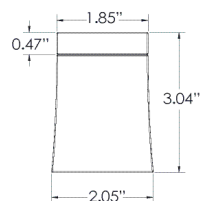
**05RN-F** - 1.64' (0.5 m) length cable  
Single connection IP68

*Also Available*

**00EY/FGL9.STD** - Housing box

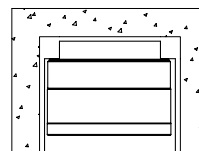
### FIXTURE DIMENSIONS (additional)

#### Front View - Surface Mount

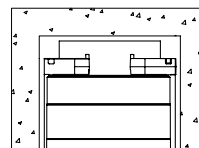


### RECESSED INSTALLATION OPTIONS

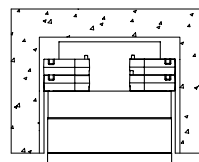
*recessed installation*



*flush installation*



*protruding installation*



Job Name/Date:

Fixture Type Designation:

## SUGGESTED POWER SUPPLIES

24VDC

Part Number	Description	Input/Output	# of Fixtures
<a href="#">PPLT00284</a>	Non-Dim	120-277VAC to 24VDC, 100W, Class 2	1-2
<a href="#">PPLT00543</a>	0-10V Dimming to 15% (-40°C / -40°F cold weather start)	120-277VAC to 24VDC, 100W, Class 2	1-2

## Suggested Lutron Compatible - 34W (FOG 1 900)

Part Number	Option	Lutron SKU	Dim Range	Description	Input/Output	# of Fixtures
<a href="#">PPLT00530</a>	L3DAE / L3DA3W	L3DA	100%-1%	Hi-Lume™ 1% EcoSystem™ or 1% 3-Wire LED Driver	120-277VAC to 24VDC, 96W, Class 2	1-2

## DRIVERS IN NEMA ENCLOSURE

Remote 24VDC - ELV / TRIAC / 0-10V



PPLT00715

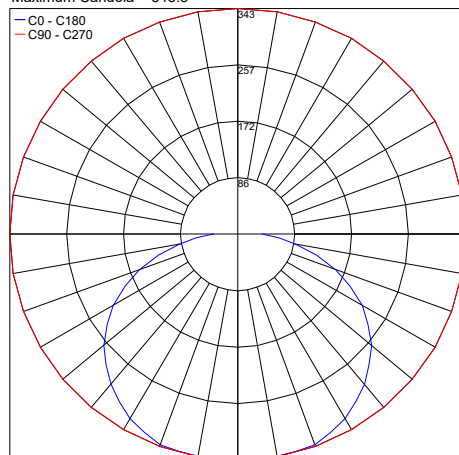
Part Number	Description	Input/Output	# of Fixtures 34W
<a href="#">PPLT00715</a>	ELV / TRIAC / 0-10V Dimming to 0.1%	120-277VAC to 24VDC, 96W, Class 2, WET/DAMP	1-2

For other power supply options consult factory.

## PHOTOMETRIC DATA

Note: All photometric data is 3000K

Maximum Candela = 343.3



PHOTOMETRIC FILENAME : FOG 1 900 - FGL9XXXDHB10X.IES

Job Name/Date:

Fixture Type Designation: