

IDROROUND IP65

Idraround IP65 is a recessed luminaire made of Coral Waterout® for installation in walls or ceilings inside spas, wellness clubs or moist environments. It has an aperture of Ø3.5" with a wide 40° beam and 3000K as standard. Other CCT and Dim to Warm version available.

TECHNICAL DATA

Wattage / Input	9W (500mA - Static White) 6W (350mA - Dim to Warm)
Power Supply	Remote, not included. See page 2.
Construction	Body: Coral Waterout®
CCT	2700K, 3000K, 4000K Dim to Warm (1800K-3000K)
CRI	>90
BUG Rating	B1-U0-G0
LED Lumens	557 lm (3000K)
Efficacy	61.9 lm/W (3000K)
Optics	40° Wide Beam
Finishes	Unfinished
Fixture Dimensions	Ø5.9" x 4.3" h
Cut-Out Dimensions	Ø6.3"
Aperture	Ø3.5"
Fixture Weight	2.4 lbs
IP Rating	IP65

The body is made of Coral WaterOut® a unique patented composite material highly resistant to water penetration - made from modifying the structure of Coral®. This water-repellant effect remains unchanged over time as it is not a matter of a superficial finish, but rather a structural feature of the material itself.

This material is therefore ideally suited to IP65/IP44-rated recessed lighting, suitable for use in external environments, and ideal for light systems in spas, wellness clubs, massage centres, swimming-pools, bathrooms, and all other locations where water and humidity restrict the choice of technical lighting.

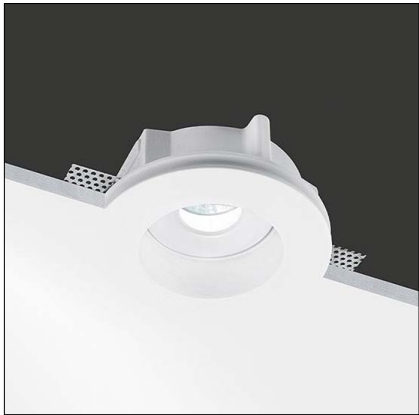
ORDERING INFORMATION

Example: BU5593.Z.27.CW.US. Power Supplies ordered separately.

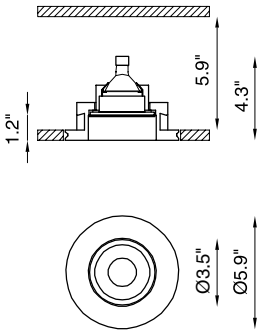
		CW	US
Model No.	CCT	Finish	
BU5593.Z (Static White)	27 - 2700K 30 - 3000K 40 - 4000K	CW - Coral Waterout®	US
BU5595.CW 4 R 40 M 98 WD (Dim to Warm)			

Job Name/Date:

Fixture Type Designation:



Fixture Dimensions



SUGGESTED POWER SUPPLIES

500mA - Static White versions

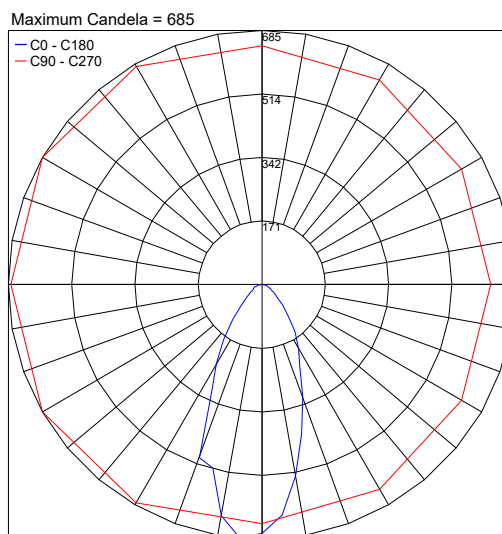
Part Number	Description	Input/Output	# of Fixtures
PPLT00497	Phase Dim (120V only)	120VAC to 500mA, 12W, Class 2, DAMP	1-1
PPLT00467-P	0-10V Dimming to 1.0%	120-277VAC to 500mA, 50W, Class 2, DAMP	1-3
PPLT00561-P	0-10V Dimming to 0.1%	120-277VAC to 500mA, 100W, Class 2	1-3

Suggested Lutron Compatible Drivers

Part Number	Option	Lutron SKU	Dim Range	Description	Input/Output	Fixtures
PPLT00259	L3DAE / L3DA3W	L3DA	100%-1%	Hi-Lume™ 1% EcoSystem™ or 1% 3-Wire LED Driver	120-277VAC, 10W	1-1
PPLT00195	L3DAE / L3DA3W	L3DA	100%-1%	Hi-Lume™ 1% EcoSystem™ or 1% 3-Wire LED Driver	120-277VAC, 19W	1-2
PPLT00180	L3DAE / L3DA3W	L3DA	100%-1%	Hi-Lume™ 1% EcoSystem™ or 1% 3-Wire LED Driver	120-277VAC, 27W	2-2

*For other power supply options consult factory.***SUGGESTED POWER SUPPLIES**350mA - Dim to Warm version - *Consult Factory***ACCESSORIES****Installation (Optional)****BR5593LT** - Static White**BR5495LT** - Dim to Warm

Brick & Concrete Back Box

*Consult factory for back box options.***PHOTOMETRIC DATA***Note: All Photometry is 3000K*

Job Name/Date:

Fixture Type Designation: