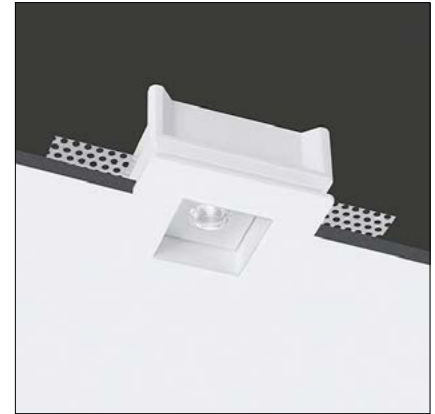


INVISILED IP44-IP65

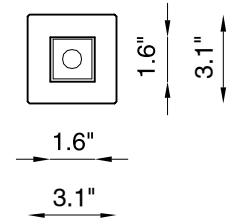
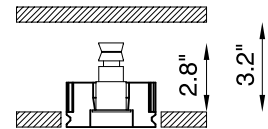
InvisILED IP44-IP65 is a recessed luminaire made of Coral Waterout® for installation in outdoor walls or ceilings. It has an aperture of 1.6" square, and is available in white light with a narrow beam 14° optic.



TECHNICAL DATA

Wattage / Input	2W (500mA)
Power Supply	Remote, not included. See page 2.
Construction	Body: Coral Waterout®
Absorption Capacity	11.30 ft²
CCT	3000K (2700K on request, consult factory)
CRI	>90
LED Lumens	150 lm (3000K)
Efficacy	75 lm/W (3000K)
Optics	14° Narrow Beam
Finishes	Unfinished
Fixture Dimensions	3.15" l x 3.15" w
Cut-Out Dimensions	3.54" l x 3.54" w
Aperture	1.57" l x 1.57" w
Fixture Weight	0.66 lbs
IP Rating	IP44 / IP65

Fixture Dimensions



The body is made of Coral WaterOut® a unique patented composite material highly resistant to water penetration - made from modifying the structure of Coral®. This water-repellant effect remains unchanged over time as it is not a matter of a superficial finish, but rather a structural feature of the material itself.

This material is therefore ideally suited to IP65/IP44-rated recessed lighting, suitable for use in external environments, and ideal for light systems in spas, wellness clubs, massage centres, swimming-pools, bathrooms, and all other locations where water and humidity restrict the choice of technical lighting.

ORDERING INFORMATION

Example: BU6349.CW.US. Power Supplies ordered separately.

	CW	US
Model No.	Finish	
BU6349 (IP44)	CW - Coral Waterout®	US
BU6347 (IP65)		

Job Name/Date:

Fixture Type Designation:

SUGGESTED POWER SUPPLIES

500mA

Part Number	Description	Input/Output	# of Fixtures
PPLT00497	Phase Dim (120V only)	120VAC to 500mA, 12W, Class 2	2-6
PPLT00467-P	0-10V Dimming to 1.0%	120-277VAC to 500mA, 50W, Class 2	1-15
PPLT00538-P	0-10V Dimming to 0.1%	120-277VAC to 500mA, 100W, Class 2	1-48

Suggested Lutron Compatible Drivers

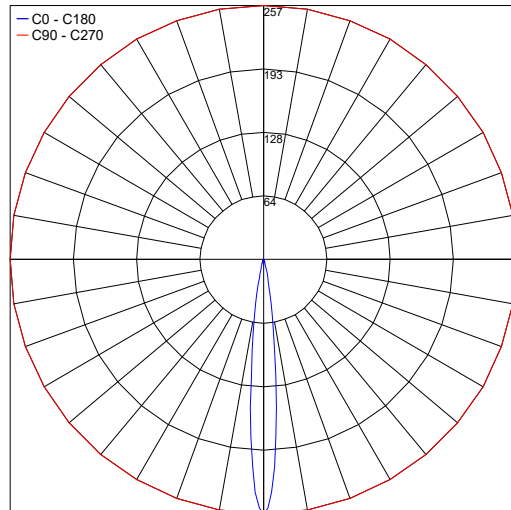
Part Number	Option	Lutron SKU	Dim Range	Description	Input/Output	Fixtures
PPLT00259	L3DAE / L3DA3W	L3DA	100%-1%	Hi-Lume™ 1% EcoSystem™ or 1% 3-Wire LED Driver	120-277VAC, 10W	3-5
PPLT00195	L3DAE / L3DA3W	L3DA	100%-1%	Hi-Lume™ 1% EcoSystem™ or 1% 3-Wire LED Driver	120-277VAC, 19W	5-9
PPLT00180	L3DAE / L3DA3W	L3DA	100%-1%	Hi-Lume™ 1% EcoSystem™ or 1% 3-Wire LED Driver	120-277VAC, 27W	9-13

For other power supply options consult factory.

PHOTOMETRIC DATA

Note: All Photometry is 3000K

Maximum Candela = 256.9



Job Name/Date:

Fixture Type Designation: