

Mini Me (MM) is a smaller version of the minimalist lighting solution, Nine, that offers linear spread upper and diffused lower light emissions. Small details such as no power cord maintain the minimalistic idea without sacrificing function in the field. It is 8 inches in length with multiple color temperature and finish options.



MADE IN THE U.S.A.

Fixture Dimensions
See Drawing on page 2.

Up and Down dim together
(Separate Dimming on request)

TECHNICAL DATA

Wattage / Input	16.5W (120-277VAC - 347VAC available)
Power Supply	Integral (0-10V Dimming)
Construction	Body: Extruded Aluminum Mounting: Aircraft Cable
CCT	2700K, 3000K, 3500K, 4000K
CRI	>90
Delivered Lumens	Coming Soon
Efficacy	Coming Soon
Optics	Up: Linear Spread, Down: Diffuse
Finishes	4 Standard, See Below.
Fixture Dimensions	See page 2.
LED Source	Mid-Power LEDs
IP Rating	IP20

ORDERING INFORMATION

Example: MM-L-8-30-P-11-C-SW.

DMM-L	-	8	-		-	P	-		-		-	
-------	---	---	---	--	---	---	---	--	---	--	---	--

Model No.	Length	CCT	Body	Finish	Driver	Canopy
DMM-L	8 - 8 Inch	27 - 2700K	P - Pendant	02 - Black Suede	C - 120-277VAC, 0-10V Dimming	RC - Recessed*
		30 - 3000K		18 - Textured Bronze		SC - Surface*
		35 - 3500K		TS - Silver	2 - 347VAC, 0-10V Dimming	RW - Recessed, White
		40 - 4000K		11 - White Suede		SW - Surface, White
			99 - Custom	NOTE: For separate dimming, add suffix -DI to the end of the model number.	AS - Surface Acoustical Tile*	
					AW - Surface Acoustical Tile, White	

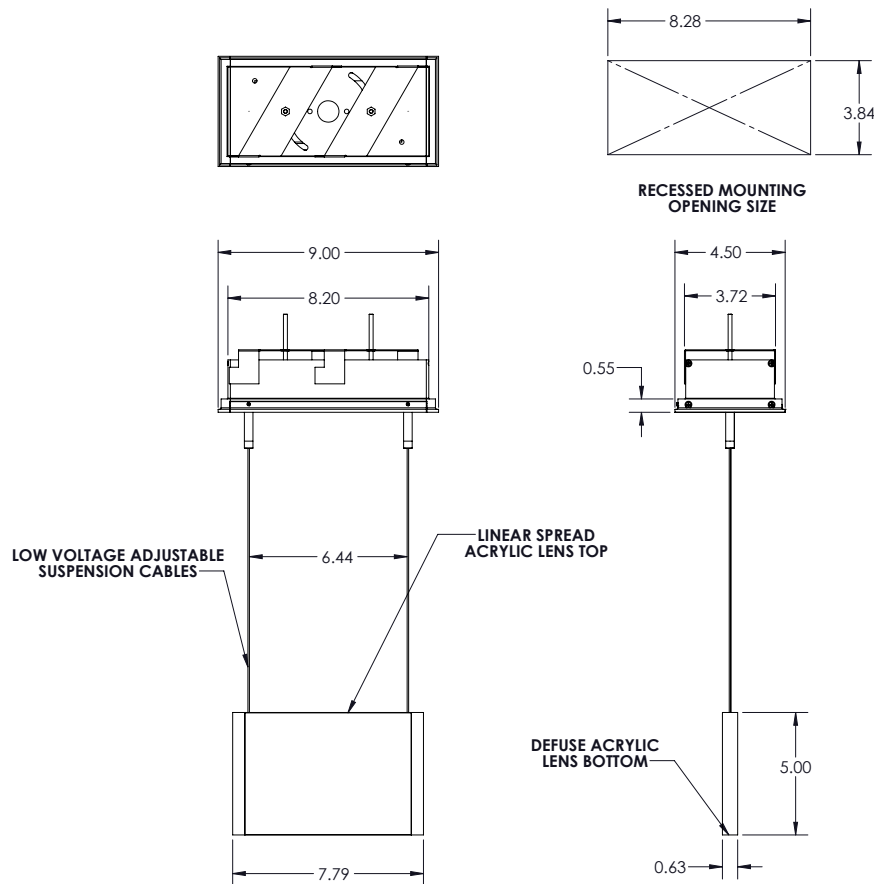
* Same finish as fixture
- Other color on request -

NOTE: AS & AW utilize a rosette mounting pattern to allow direct mounting to a junction box that will hold a minimum of 50 lbs.

Job Name/Date:

Fixture Type Designation:

FIXTURE DIMENSIONS



ACCESSORIES - CONNECTORS for Continuous Run

Connectors Example: *DMM-C18021101*

DMM	-	C180	2		01
Model No. DMM	Type C180 - 180° Connector	# of Ends 2 - 2 Ends	Finish 02 - Black Suede 18 - Textured Bronze TS - Silver 11 - White Suede 99 - Custom	Option 01 - None	

Job Name/Date:

Fixture Type Designation: