

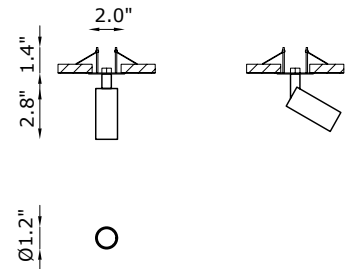
Y1D is a cylindrical indoor floodlight suitable for installation on walls or ceilings. It has a 360° adjustable arm system with invisible joints. Thanks to the recessed light source it reduces the glaring effect, for maximum visual comfort, and is available in 22° or 50° optics with 4 standard finishes.



TECHNICAL DATA

Wattage / Input	8W (700mA)
Power Supply	Remote, not included. See page 2.
Construction	Body: Aluminum
CCT	3000K (2700K, 4000K on request)
CRI	>90
BUG Rating	B1-U1-G0 (3000K)
Delivered Lumens	695 lm (3000K)
Efficacy	86.9 lm/W (3000K)
Optics	22°, 50°
Finishes	White, Black, Chrome, Brass
Fixture Dimensions	2.8" l x Ø1.2"
Fixture Weight	0.88 lbs
IP Rating	IP40

Fixture Dimensions



ORDERING INFORMATION

Example: BU1053.BL.4R.22.E.30.WD.US. Power Supplies ordered separately.

BU1053	.		.	4R	.		.	E	.		.	WD	.	US
Model No.	Finish		Optics		CCT	Power								
BU1053	WH - White BL - Black CP - Chrome BR - Brass	4R - Recessed	22 - 22° 50 - 50°	E	27 - 2700K 30 - 3000K 40 - 4000K	WD - Remote	US							

Job Name/Date:

Fixture Type Designation:

SUGGESTED POWER SUPPLIES

700mA

Part Number	Description	Input/Output	# of Fixtures
PPLT00466-P	0-10V Dimming to 1.0%	120-277VAC to 700mA, 10W, Class 2, DAMP	1-1
PPLT00470	Phase Dim (120V only)	120VAC to 700mA, 14W, Class 2	1-1
PPLT00261	Leading / Trailing Edge Dimming to 10% (120V only)	120-277VAC to 700mA, 32W, Class 2	3-3
PPLT00467-P	0-10V Dimming to 1.0%	120-277VAC to 700mA, 50W, Class 2, DAMP	1-4
PPLT00538-P	0-10V Dimming to 0.1% (4 channels)	120-277VAC to 700mA, 100W, Class 2	1-12

Suggested Lutron Compatible

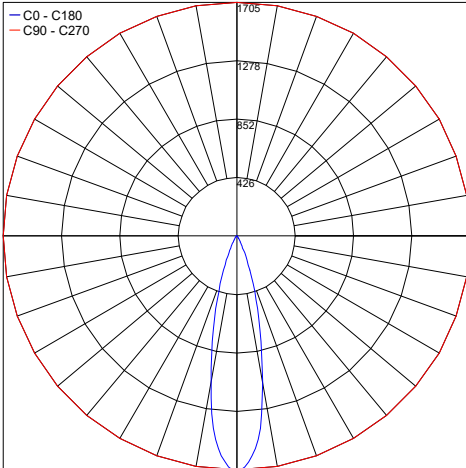
Part Number	Option	Lutron SKU	Dim Range	Description	Input/Output	# of Fixtures
PPLT00195	L3DAE / L3DA3W	L3DA	100%-1%	Hi-Lume™ 1% EcoSystem™ or 1% 3-Wire LED Driver	120-277VAC to 700mA, 19W, Class 2	2-3
PPLT00676	PEQE	PEQE	100%-1%	Hi-Lume™ Premier 0.1% EcoSystem™ F2B LED Driver	120-277VAC to 700mA, 20W, Class 2	2-3
PPLT00180	L3DAE / L3DA3W	L3DA	100%-1%	Hi-Lume™ 1% EcoSystem™ or 1% 3-Wire LED Driver	120-277VAC to 700mA, 27W, Class 2	4-4

For other power supply options consult factory.

PHOTOMETRIC DATA

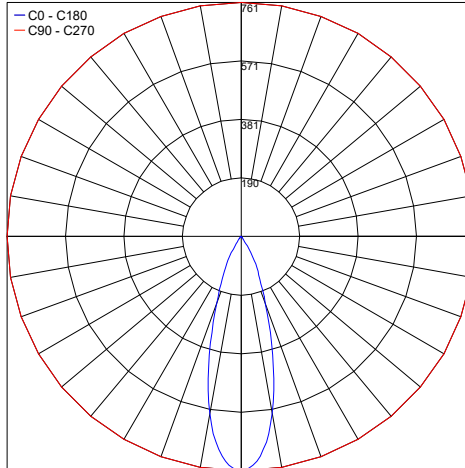
Note all Photometry is 3000K

Maximum Candela = 1704.5



PHOTOMETRIC FILENAME : Y1D 22° 30K - BU1053.IES

Maximum Candela = 761.3



PHOTOMETRIC FILENAME : Y1D 50° 30K - BU1053.IES

Job Name/Date:

Fixture Type Designation: