

ELK

THE PRESENCE OF AN ILLUMINATING ELEMENT IN AN OUTDOOR ENVIRONMENT CAN SOMETIMES BE PERCEIVED AS EXTRANEIOUS AND NOT VERY INTEGRATED. ELK WAS DESIGNED TO FIT HARMONIOUSLY INTO THE ENVIRONMENT THAT HOSTS IT. THE MAIN MATERIAL USED FOR THIS DESIGN IS PORTLAND CEMENT. ITS SILKY AND WARM SURFACE GIVES A VERY NATURAL SENSATION NOT ONLY TO THE TOUCH BUT ALSO TO THE SIGHT. THE ORGANIC ALTERNATION OF SOLIDS AND VOIDS IS PRECISELY EMITTED, INTEGRATING IT PERFECTLY INTO THE AREAS IT ILLUMINATES.

COMMON FEATURES:

- PORTLAND CONCRETE HOUSING WITH HIGH PERFORMANCE STRUCTURE WITH FIBERGLASS.
- CHEMICAL TREATMENT AGAINST WATER IN TRANSPARENT FINISHING.
- A4 STAINLESS STEEL SEALING ALLEN SCREWS.
- EXTRA CLEAR TEMPERED GLASS LENS.
- SILICON GASKET.
- COMPLIANT EN60598-1 AND RELATED ANNEX.

SPECIFIC FEATURES:

- DIE CASTED ENAB46100 ALUMINUM FIXING BASE FOR WALL.
- HIGH-RESISTANCE DOUBLE PAINTING PROCESS (UNI ISO9227:2012 SALINE TEST COMPLIANT).
- SINGLE-CABLE INPUT, BRASS CABLE BLOCKER IP66 FOR UNIPOLAIRE CABLE.

BOLLARD-SPECIFIC FEATURES:

- STAINLESS STEEL 430 FIXING BASE.
- 6026 ANTICORODAL ALUMINUM HOUSING INSIDE.
- ANODIZED OXIDATION TREATMENT 30 MICRON (UNI ISO9227:2012 SALINE TEST COMPLIANT).
- SINGLE-CABLE INPUT, PRE-ASSEMBLED WITH NEOPRENE CABLE AND IP68 WATER-STOP FAST CONNECTOR.

designplan® 

79 Trenton Avenue
Frenchtown, NJ 08825

www.designplan.com

Tel: (908) 996-7710
Fax: (908) 996-7042






A CONCRETE DESIGN

ELK'S ORGANICALLY INSPIRED DESIGN WAS DEVELOPED FROM CONCRETE. THE AESTHETIC IS ENHANCED BY A CASTING TECHNOLOGY THAT ALLOWS FOR THE CREATION OF COMPLEX SHAPES AND STYLES, THAT ALLOW IT TO EASILY ADAPT TO THE ENVIRONMENT IT OCCUPIES.

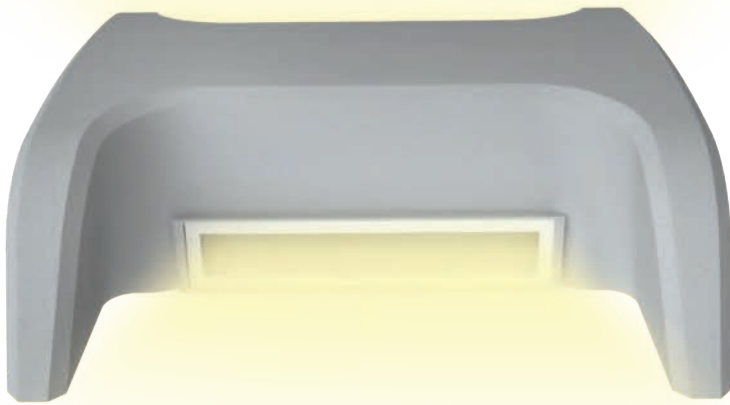
A SHELTER FOR LIGHT

LIGHT IS LIFE. IN THE ELK, THE LIGHT ITSELF IS PROTECTED BY CONCRETE. THE LIGHT BEAM THAT EXTENDS INTO ITS SURROUNDING ENVIRONMENT, SLIMS THE PRODUCT'S FIGURE. IT APPEARS LIGHT, DESPITE ITS SOLIDNESS.



LIKE A SWORD IN THE STONE

AND WHY MAKE THE INSTALLATION OF SUCH A PRODUCT COMPLEX? ELK HAS AN EFFECTIVE GROUND FIXING SYSTEM THAT MAKES THE PRODUCT EXTREMELY SIMPLE TO INSTALL. IT STANDS FIRMLY IN DIFFERENT ARCHITECTURAL CONTEXTS, WITH OR WITHOUT ANCHOR BOLTS.



THE HARDEST CORE

BEHIND THE SILKY PORTLAND CEMENT SHELL, THE WALL LAMP HAS THE SAME STRENGTHS AS THE GROUND MODEL. IT IS ARCHITECTURALLY ADAPTABLE, HAS IMPECCABLE EMISSION LIGHTING, A SOLID, STURDY FORM, AND EASY INSTALLATION.







ELK APPLIQUE & BOLLARD



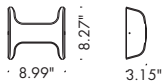
PERFORMANCE DATA

TRUE POWER (W)	7.0
TRUE LUMENS (3000K)	908 (.05)
TRUE LUMENS (4000K)	972 (.05)
L90 LIFETIME (HRS)	40.000 (Ta 35°C)

CONSTRUCTION DATA

CLASS	I
NOMINAL VOLTAGE	xxx 50/60Hz
POWER SUPPLY	INCLUDED ON-OFF
OVERVOLTAGE PROTECTION	-
EXTERNAL CABLE	SINGLE ENTRY - NONE
PROTECTION RATING	IP66 - IK08
EMISSION	DIFFUSED DOUBLE EMISSION

DIMENSIONS

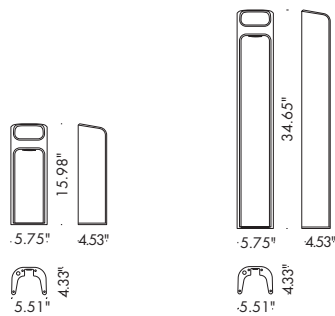


5.5
190 (.64)
200 (.64)
40.000 (Ta 35°C)

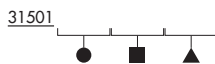
5.5
190 (.64)
200 (.64)
40.000 (Ta 35°C)

II
220-xxx 50/60Hz
INCLUDED ON-OFF 10KV
SINGLE ENTRY
221-POLES NEOPRENE
IP68 FAST CONNECTION
IP66 - IK08
SINGLE EMISSION

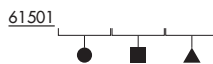
II
xxx 50/60Hz
INCLUDED ON-OFF
10KV
SINGLE ENTRY
2-POLES NEOPRENE
IP68 FAST CONNECTION
IP66 - IK08
SINGLE EMISSION



CODE COMPOSITION



● FINISH	.A - NATURAL CONCRETE .B - ANTHRACITE CONCRETE
■ LED COLOR	.2 - 2700°K - CRI > 80 .3 - 3000°K - CRI > 80 .4 - 4000°K - CRI > 80
▲ BEAM	.05 - DIFFUSED



.A - NATURAL CONCRETE .B - ANTHRACITE CONCRETE
.2 - 2700°K - CRI > 80 .3 - 3000°K - CRI > 80 .4 - 4000°K - CRI > 80
.64 - MONOEMISSION



.A - NATURAL CONCRETE .B - ANTHRACITE CONCRETE
.2 - 2700°K - CRI > 80 .3 - 3000°K - CRI > 80 .4 - 4000°K - CRI > 80
.64 - MONOEMISSION

