



**INSTRUCTIONS PERTAINING TO RISK OF FIRE OR INJURY TO PERSONS. READ ALL INSTRUCTIONS. IMPORTANT SAFETY INSTRUCTIONS. SAVE THESE INSTRUCTIONS.**

**DANGER - RISK OF SHOCK - DISCONNECT POWER BEFORE INSTALLATION! Please read all instructions before installation.**

- Keep these instructions for future reference.
- Must be installed by a qualified electrician in accordance with national and local standards. Designplan is not responsible for fixtures installed without regard to these standards.
- Unauthorized alterations or tampering of product voids warranty.
- The main power connection must be in accordance with local electrical codes.
- Suitable for OUTDOOR applications.



**IP65**

**ATTENTION:** **For In-Grade** - It is the contractor's responsibility to seal the conduit with "Great Stuff" aerosol seal that prevents water and moisture penetration for ultimate protection. Contractor **MUST** use gel-filled wire nuts.

## Maintenance

Scheduled maintenance must be carried out once a year on all lighting devices, regardless of appliance class and type of use. It must include the following operations:

- Periodically clean fixtures to remove dirt from gratings and screw heads.
- Check tightness of screws on various parts of the device.
- Check that all cable glands and cables are intact and tight. Check that the glass or plastic lens is intact, and replace it if broken or damaged.
- The internal components such as the ballast, driver, washers and screws must not show clear signs of oxidation or rust. Clear traces of rust and oxidation will indicate the presence of water inside the device.
- In the case of damage, the components must be replaced by original components or spare parts.

# NOVA ADJUSTABLE BOLLARD

5.5W, INTEGRAL 120VAC

designplan®

installation instructions

## ***Recessed in the ground.***

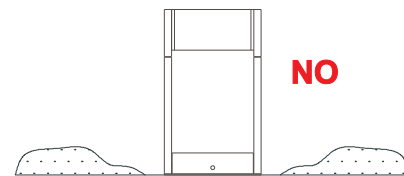
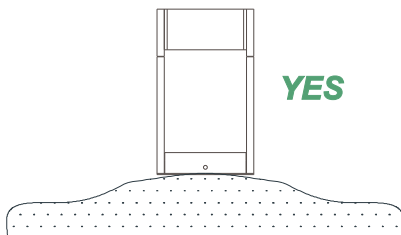
*To make a plinth to fix the base of fitting size of 15.75"x15.75" about, with an height of 11.81".*

*To avoid direct contact between the base of fitting and the pole with the ground in order to avoid direct contact between aluminum parts and the humidity and chemical element.*

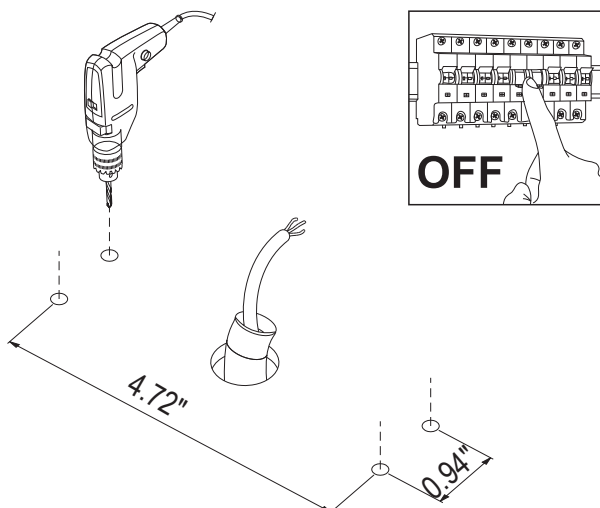
*To make a periodic cleaning of metallic parts if eventually may be in contact with the ground.*

*Note: Never install the fixtures in the ground with wrong incline because this could be the cause of dirty deposit and permanent submersion of fixture.*

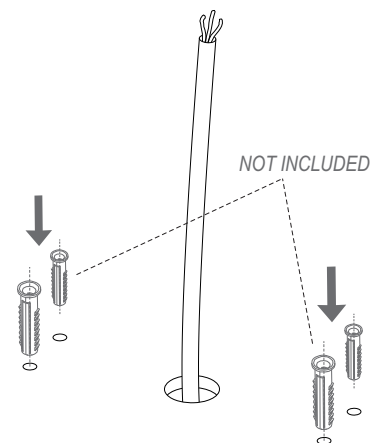
*The parts of the fixtures are damaged owing to stagnation and aggressive chemical elements.*



1



2

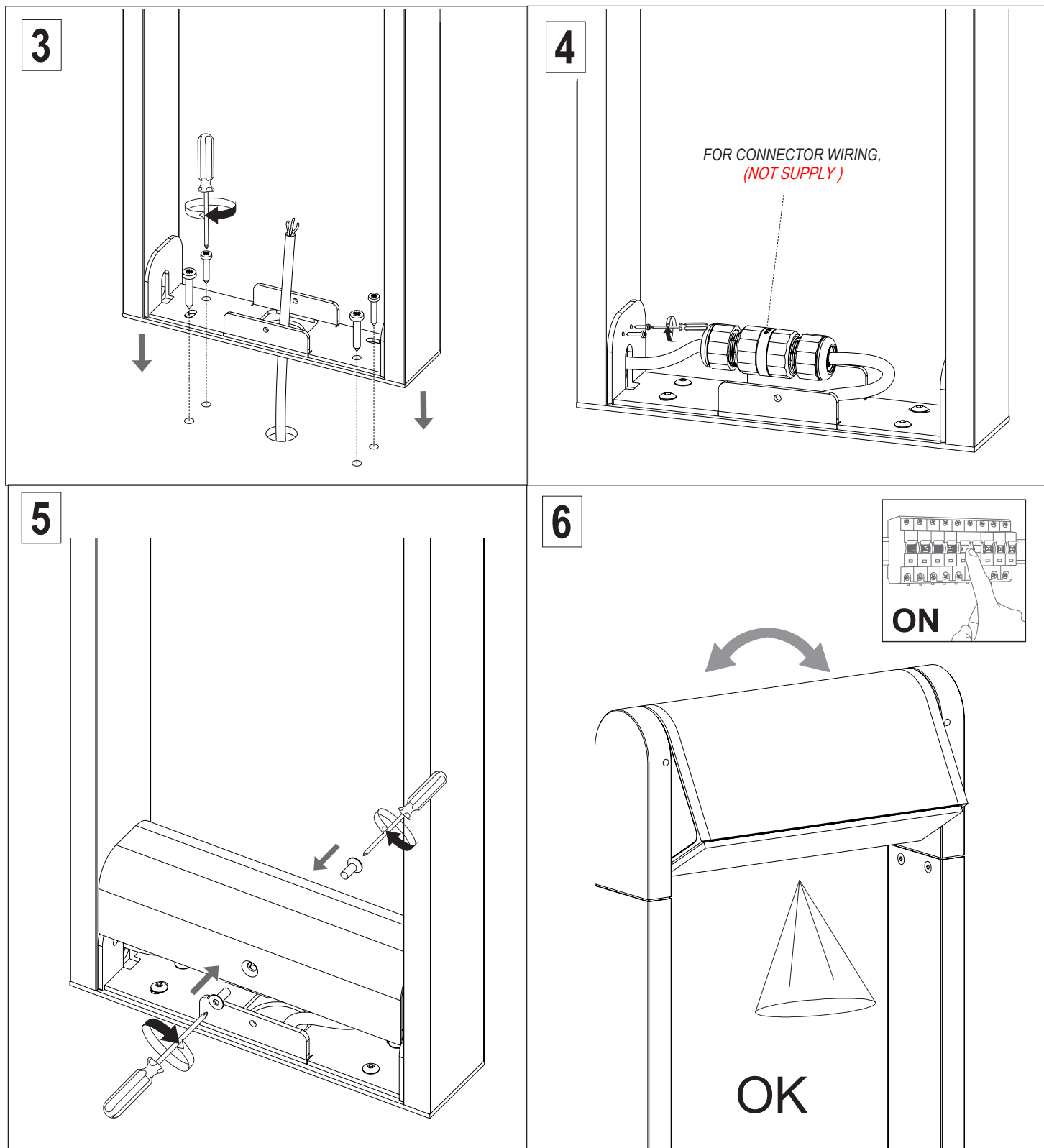


# NOVA ADJUSTABLE BOLLARD

designplan®

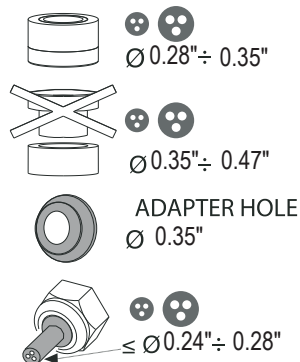
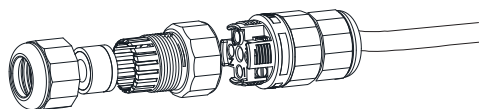
5.5W, INTEGRAL 120VAC

installation instructions

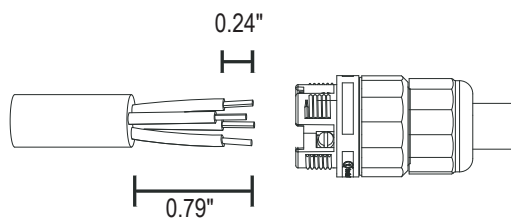
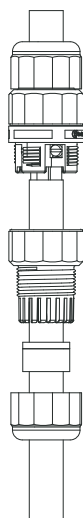


## FOR CONNECTOR WIRING

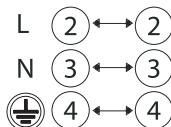
A



B



2-3-4 POLES



C

