

PIN 1200

Pin is a slender, IP65-rated bollard made of aluminum and stainless steel suitable for outdoor installation. It is highly durable, resistant to the elements and protected by a "hermit crab system" which allows cables to be stored inside the technical compartment and protected by a gel compound that makes the wiring waterproof and error proof. Pin 1200 is the 47" version. Dark Sky compliant.



SINGLE

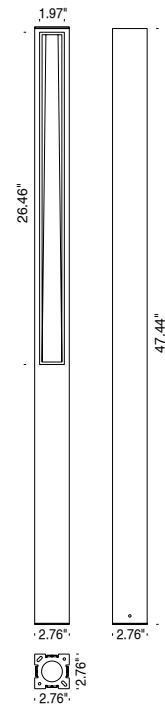


DOUBLE

TECHNICAL DATA

Wattage	14W
Power Supply	Integral 120VAC
Dimming	0-10V Dimming
Construction	Body: 6026 Anticorodal Aluminum Base: Stainless Steel Lens: Extra Clear Tempered Glass
CCT	2700K, 3000K, 4000K
BUG Rating	B0-U0-G1 (Mono) B1-U2-G1 (Double)
CRI	>80
Delivered Lumens	1142 lm (3000K) Dark Sky compliant
Efficacy	81.6 lm/W
Optics	Single or Double Emission
Finishes	Anthracite, Alu Gray (RAL 9006), Dark Brown
Lumen Maintenance	55,000 hrs (Ta 35°C)
Fixture Dimensions	47.44" h x 2.76" x 2.76"
Aperature	26.46" h x 1.97"
IP Rating	IP65
Impact Resistance	IK07

Fixture Dimensions



ORDERING INFORMATION

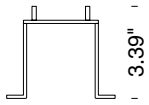
Example: F61038.8.3.67.US. Power Supplies / Accessories ordered separately.

<input type="text"/>	<input type="text"/>	<input type="text"/>	<input type="text"/>	<input type="text"/>	<input type="text"/>
Model No.	Finish	CCT	Emmission	<input type="text"/>	<input type="text"/>
F61037 - Mono	1 - Anthracite	2 - 2700K	64 - Mono	<input type="text"/>	<input type="text"/>
F61038 - Double	4 - Alu Gray (RAL 9006)	3 - 3000K	67 - Double	<input type="text"/>	<input type="text"/>
	8 - Dark Brown	4 - 4000K		<input type="text"/>	<input type="text"/>

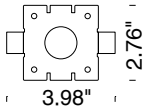
Job Name/Date:

Fixture Type Designation:

ACCESSORIES



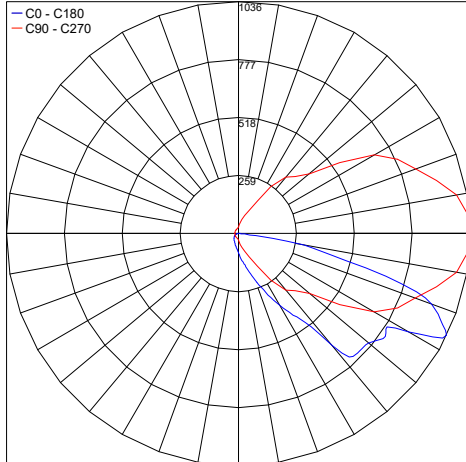
A9939
Anchorage Base



PHOTOMETRIC DATA

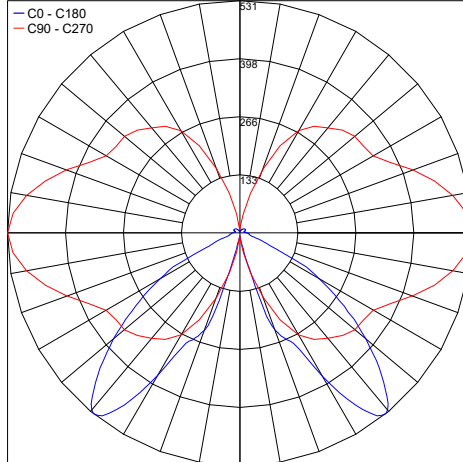
Note all Photometry is 3000K

Maximum Candela = 1035.7



PHOTOMETRIC FILENAME : PIN 1200 MONO 30K - 61037.X.3.64.IES

Maximum Candela = 531.3



PHOTOMETRIC FILENAME : PIN 1200 DOUBLE 30K - 61038.X.3.67.IES

Job Name/Date:

Fixture Type Designation: