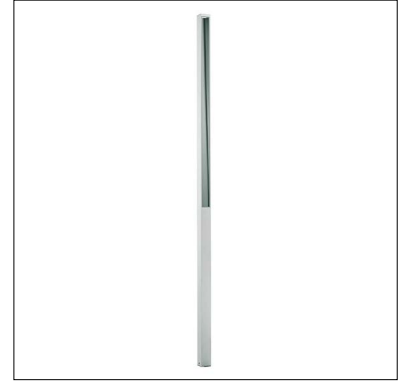


# PIN 2400

Pin is a slender, IP65-rated bollard or pole-mounted luminaire made of aluminum and stainless steel suitable for outdoor installation. It is highly durable, resistant to the elements and protected by a “hermit crab system” which allows cables to be stored inside the technical compartment and protected by a gel compound that makes the wiring waterproof and error proof. Pin 2400 is the 95” version.



SINGLE

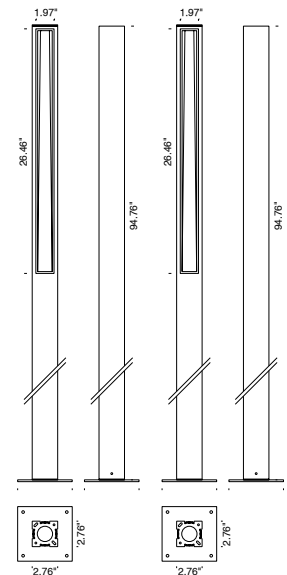


DOUBLE

## TECHNICAL DATA

|                           |  |
|---------------------------|--|
| <b>Wattage</b>            | 14W  |
| <b>Power Supply</b>       | Integral 120VAC  |
| <b>Construction</b>       | Body: 6026 Anticorodal Aluminum<br>Base: Stainless Steel<br>Lens: Extra Clear Tempered Glass |
| <b>CCT</b>                | 2700K, 3000K, 4000K  |
| <b>BUG Rating</b>         | B0-U0-G1 (Mono)<br>B1-U2-G1 (Double)   |
| <b>CRI</b>                | >80  |
| <b>Delivered Lumens</b>   | 1142 lm (3000K)  |
| <b>Efficacy</b>           | 81.6 lm/W  |
| <b>Optics</b>             | Single or Double Emission  |
| <b>Finishes</b>           | Anthracite, Alu Gray (RAL 9006), Dark Brown  |
| <b>Lumen Maintenance</b>  | 55,000 hrs (Ta 35°C)   |
| <b>Fixture Dimensions</b> | 94.76” h x 2.76” x 2.76”   |
| <b>Aperature</b>          | 26.46” h x 1.97”   |
| <b>IP Rating</b>          | IP65   |
| <b>Impact Resistance</b>  | IK07   |

Fixture Dimensions



## ORDERING INFORMATION

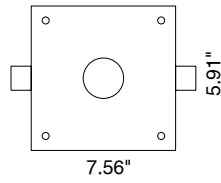
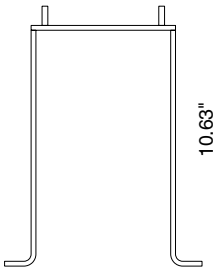
Example: F61042.8.3.64.US. Power Supplies ordered separately.

|                      |                         |                      |                      |                      |     |
|----------------------|-------------------------|----------------------|----------------------|----------------------|-----|
| <input type="text"/> | <input type="text"/>    | <input type="text"/> | <input type="text"/> | <input type="text"/> | .US |
| <b>Model No.</b>     | <b>Finish</b>           | <b>CCT</b>           | <b>Emmission</b>     |                      |     |
| F61042 - Mono        | 1 - Anthracite          | 2 - 2700K            | 64 - Mono            |                      | .US |
| F61043 - Double      | 4 - Alu Gray (RAL 9006) | 3 - 3000K            | 67 - Double          |                      |     |
|                      | 8 - Dark Brown          | 4 - 4000K            |                      |                      |     |

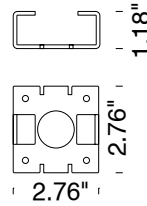
Job Name/Date:

Fixture Type Designation:

## ACCESSORIES



**A9941**  
Coach Plate

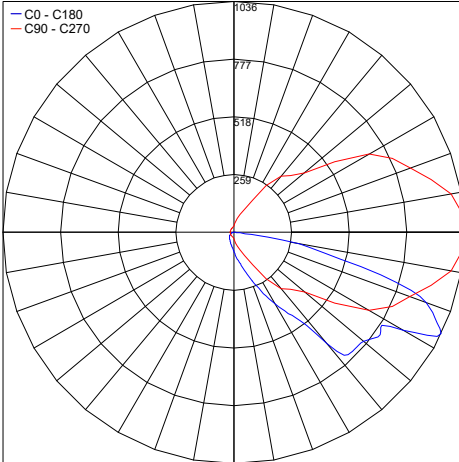


**A0121**  
Ground Mount Spacer

## PHOTOMETRIC DATA

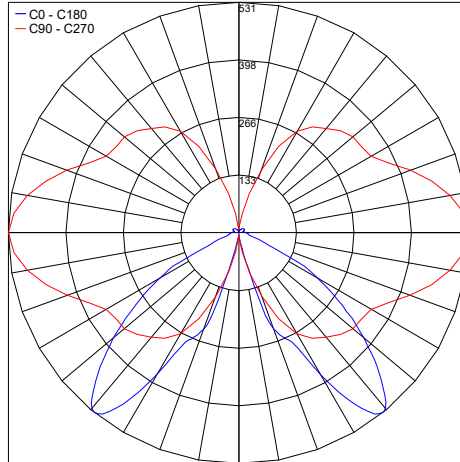
Note all Photometry is 3000K

Maximum Candela = 1035.7



PHOTOMETRIC FILENAME : PIN 2400 MONO 30K - 61042.X.3.64.IES

Maximum Candela = 531.3



PHOTOMETRIC FILENAME : PIN 2400 DOUBLE 30K - 61043.X.3.67.IES

Job Name/Date:

Fixture Type Designation: