

PIN 2400

Pin is a slender, IP65-rated bollard or pole-mounted luminaire made of aluminum and stainless steel suitable for outdoor installation. It is highly durable, resistant to the elements and protected by a “hermit crab system” which allows cables to be stored inside the technical compartment and protected by a gel compound that makes the wiring waterproof and error proof. Pin 2400 is the 95” version. Dark Sky compliant for output below 80°.



SINGLE

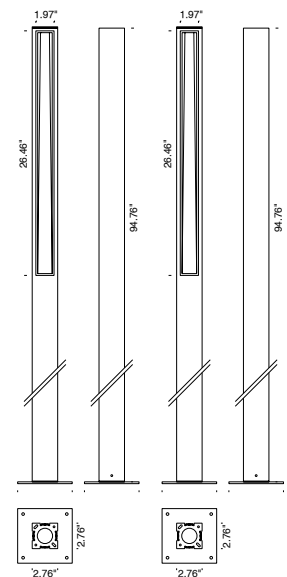


DOUBLE

TECHNICAL DATA

Wattage	14W
Power Supply	Integral 120VAC
Construction	Body: 6026 Anticorodal Aluminum Base: Stainless Steel Lens: Extra Clear Tempered Glass
CCT	2700K, 3000K, 4000K
BUG Rating	B0-U0-G1 (Mono) B1-U2-G1 (Double)
CRI	>80
Delivered Lumens	1142 lm (3000K) Dark Sky compliant, output below 80°
Efficacy	81.6 lm/W
Optics	Single or Double Emission
Finishes	Anthracite, Alu Gray (RAL 9006), Dark Brown
Lumen Maintenance	55,000 hrs (Ta 35°C)
Fixture Dimensions	94.76” h x 2.76” x 2.76”
Aperature	26.46” h x 1.97”
IP Rating	IP65
Impact Resistance	IK07

Fixture Dimensions



ORDERING INFORMATION

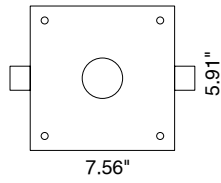
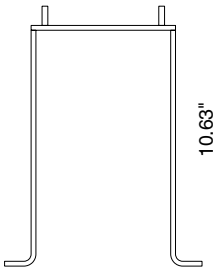
Example: F61042.8.3.64.US. Power Supplies ordered separately.

<input type="text"/>	<input type="text"/>	<input type="text"/>	<input type="text"/>	<input type="text"/>	.US
Model No.	Finish	CCT	Emmission		
F61042 - Mono	1 - Anthracite	2 - 2700K	64 - Mono		.US
F61043 - Double	4 - Alu Gray (RAL 9006)	3 - 3000K	67 - Double		
	8 - Dark Brown	4 - 4000K			

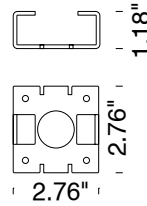
Job Name/Date:

Fixture Type Designation:

ACCESSORIES



A9941
Coach Plate

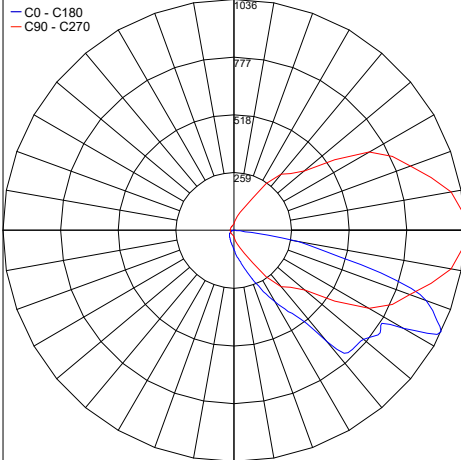


A0121
Ground Mount Spacer

PHOTOMETRIC DATA

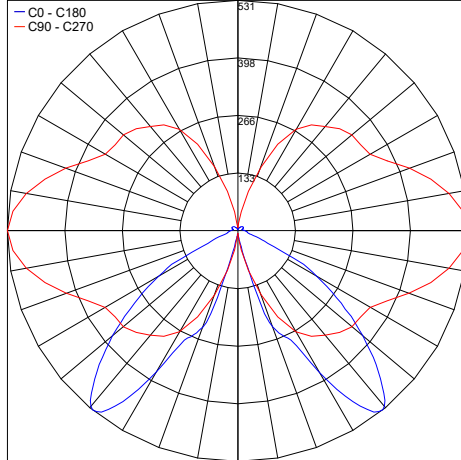
Note all Photometry is 3000K

Maximum Candela = 1035.7



PHOTOMETRIC FILENAME : PIN 2400 MONO 30K - 61042.X.3.64.IES

Maximum Candela = 531.3



PHOTOMETRIC FILENAME : PIN 2400 DOUBLE 30K - 61043.X.3.67.IES

Job Name/Date:

Fixture Type Designation: