



INSTRUCTIONS PERTAINING TO RISK OF FIRE OR INJURY TO PERSONS. READ ALL INSTRUCTIONS. IMPORTANT SAFETY INSTRUCTIONS. SAVE THESE INSTRUCTIONS.

DANGER - RISK OF SHOCK - DISCONNECT POWER BEFORE INSTALLATION! Please read all instructions before installation.

- Keep these instructions for future reference.
- Must be installed by a qualified electrician in accordance with national and local standards. Designplan is not responsible for fixtures installed without regard to these standards.
- Unauthorized alterations or tampering of product voids warranty.
- The main power connection must be in accordance with local electrical codes.
- Suitable for OUTDOOR applications.



IP66 IP67 IK08

ATTENTION: **For Wall/Ceiling** - It is the contractor's responsibility to caulk around all the edges between the fixture and the mounting surface to satisfy wet label requirements.
For In-Grade - It is the contractor's responsibility to seal the conduit with "Great Stuff" aerosol seal that prevents water and moisture penetration for ultimate protection.
Contractor **MUST** use gel-filled wire nuts.

Maintenance

Scheduled maintenance must be carried out once a year on all lighting devices, regardless of appliance class and type of use. It must include the following operations:

- Periodically clean fixtures to remove dirt from gratings and screw heads.
- Check tightness of screws on various parts of the device.
- Check that all cable glands and cables are intact and tight. Check that the glass or plastic lens is intact, and replace it if broken or damaged.
- The internal components such as the ballast, driver, washers and screws must not show clear signs of oxidation or rust. Clear traces of rust and oxidation will indicate the presence of water inside the device.
- In the case of damage, the components must be replaced by original components or spare parts.

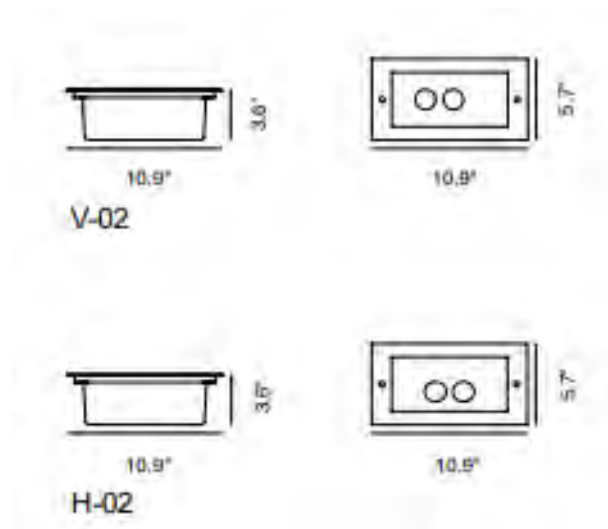
BASE 2 / BASE 3

12W, INTEGRAL 120VAC

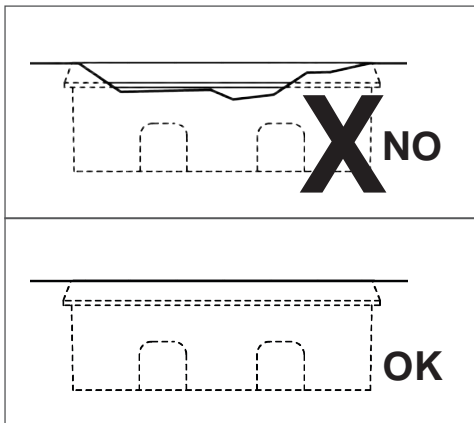
designplan®

installation instructions

FIXTURE DIMENSIONS

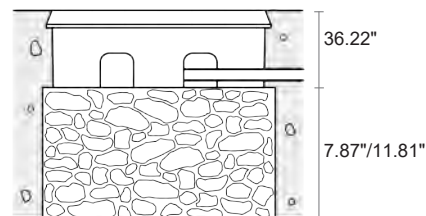


CASING DIRECTION :

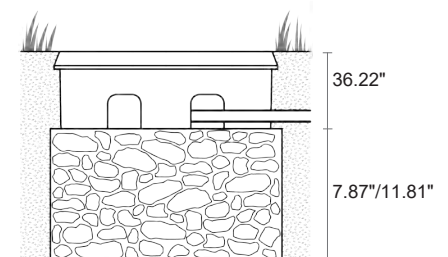


Install the casing on a flat floor

Installation in concrete :



Installation in soil :



Leave under the casing 7.87"/11.81" of drainage material (do not use sand that can be compacted) proper drainage and avoid stagnant water.

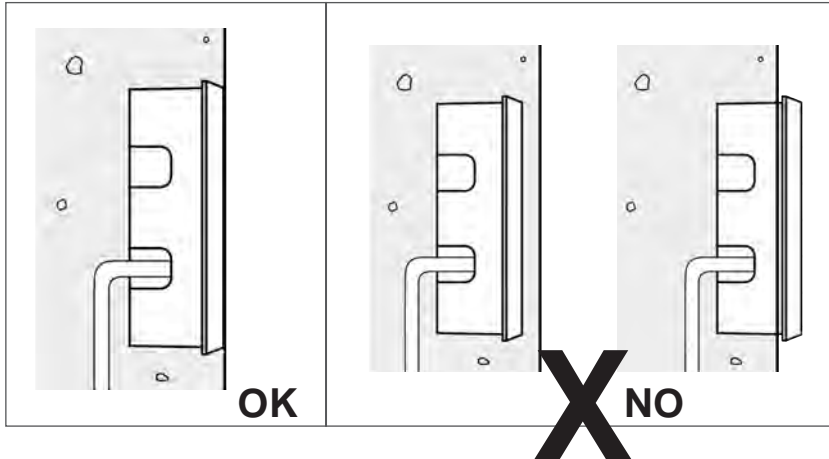
BASE 2 / BASE 3

12W, INTEGRAL 120VAC

designplan®

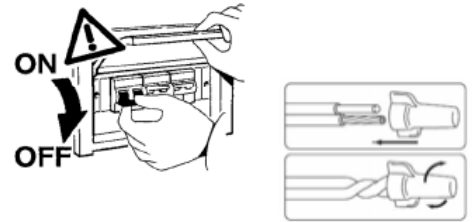
installation instructions

CASING INSTALLATION :



Install the casing to be flush with the wall

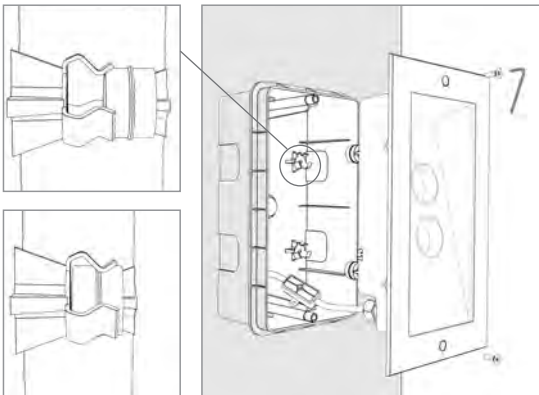
CABLE WIRING :



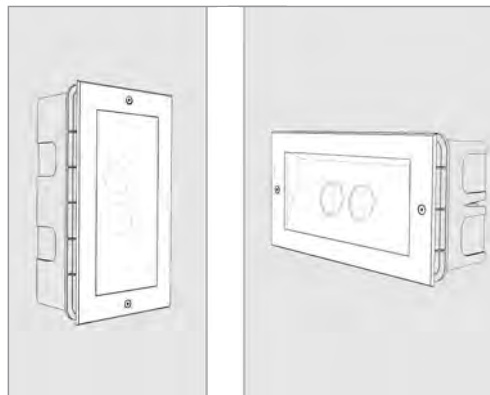
- Use gel-filled waterproof wire-nuts for wire connections.
- It is the contractor's responsibility to caulk around the edges between the fixture and the mounting surface, to satisfy wet label requirements.
- It is the contractor's responsibility to install Remote Driver in a suitable electrical enclosure.

Suggested cable cross-section - up to 0.08 x 0.03in²
Cable external diameter min. - max. 0.19" - 0.24"

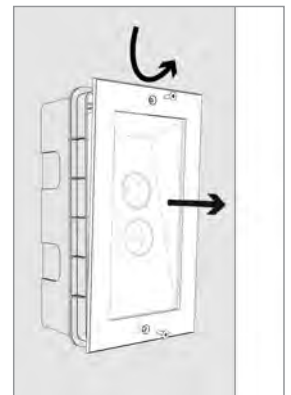
DEVICE INSTALLATION :



Align and insert the device into the casing, press down until interlocking, and then tighten the screws using a 0.08" Allen screw



Correctly installed devices



Remove the screws using a 0.08" Allen screw, pry the back of the frame to unlock and remove the device from the casing