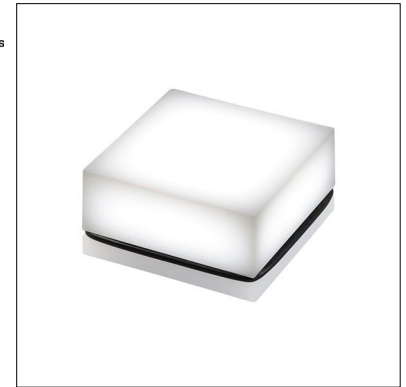


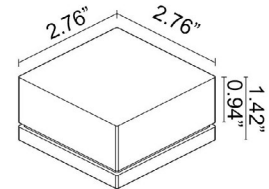
Goccia is a family of outdoor step lights that are ideal for accent and pathway guidance lighting. They are available in round or square versions, 3 sizes, static white or RGB, and that can be installed flush with the surface using an outer casing, or wall mounted. Goccia 3.5 is the 2.8" x 2.8" square, static white version. (Not suitable for use in immersion in swimming pools or fountains).



## TECHNICAL DATA

<b>Wattage / Input</b>	2W (24VDC)
<b>Power Supply</b>	Remote, not included. See page 2.
<b>Construction</b>	Body: Polyurethane Resin Cable Length: 4.92' standard (16.4" available)
<b>CCT</b>	2200K, 2700K, 3000K, 4000K
<b>CRI</b>	>80
<b>BUG Rating</b>	B0-U3-G0 (3000K)
<b>Delivered Lumens</b>	54 lm (3000K)
<b>Efficacy</b>	27 lm/W
<b>Optics</b>	Diffuse
<b>Fixture Dimensions</b>	2.76" x 1.42" h
<b>Fixture Weight</b>	0.57 lbs
<b>LED Source</b>	1 Mid-power LED
<b>Lumen Maintenance</b>	L80, B10 >60,000 hrs (Ta 25°C)
<b>Color Consistency</b>	3-Step MacAdam
<b>Operating Temp.</b>	-20°C to +45°C
<b>IP Rating</b>	IP65, IP68
<b>IK Rating</b>	IK10
<b>Walkover</b>	Yes

Fixture Dimensions



## ORDERING INFORMATION

Example: GA35000000N0DR or GA35000000N0DR-1. Accessories / Power Supplies ordered separately.

GA3500	0000		0D	R	
<b>Model No.</b>		<b>CCT</b>	<b>Optics</b>	<b>Finish</b>	<b>Cable Length</b>
GA3500	0000	N - 2200K F - 2700K 5 - 3000K 9 - 4000K	0D - Diffused	R - Resin	4.92' standard 1 - 16.40'

Job Name/Date:

Fixture Type Designation:

## SUGGESTED POWER SUPPLIES - 24VDC

Part Number	Description	Input/Output	# of Fixtures
<a href="#">PPLT00149</a>	Non-Dim	120VAC to 24VDC, 10W, Class 2, IP65	1-4
<a href="#">PPLT00632</a>	0-10V Dimming (Dim to Off)	120-277VAC to 24VDC, 12W, Class 2	1-4
<a href="#">PPLT00056</a>	Non-Dim	120-277VAC to 24VDC, 26W, Class 2, IP66	1-10
<a href="#">PPLT00690</a>	ELV / TRIAC & 0-10V Dimming	120-277VAC to 24VDC, 40W, Class 2, IP67	1-16
<a href="#">PPLT00543</a>	0-10V Dimming to 15% (-40°C / -40°F cold weather start)	120-277VAC to 24VDC, 100W, Class 2	5-40

## Suggested Lutron Compatible

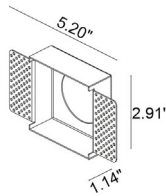
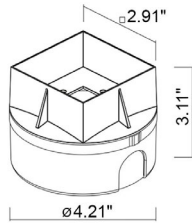
Part Number	Option	Lutron SKU	Dim Range	Description	Input/Output	# of Fixtures
<a href="#">PPLT00273</a>	L3DAE / L3DA3W	L3DA	100%-1%	Hi-Lume™ 1% EcoSystem™ or 1% 3-Wire LED Driver	120-277VAC to 24VDC, 40W, Class 2	1-16
<a href="#">PPLT00530</a>	L3DAE / L3DA3W	L3DA	100%-1%	Hi-Lume™ 1% EcoSystem™ or 1% 3-Wire LED Driver	120-277VAC to 24VDC, 96W, Class 2	1-38

For other power supply options consult factory.

## ACCESSORIES - Installation



**WCA10**  
Outer Casing  
For in-grade use



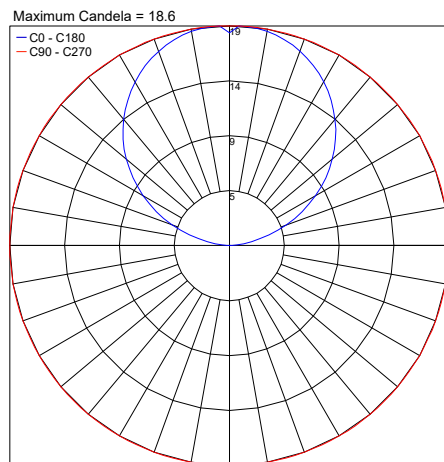
**WCA28**  
Outer Casing  
For Plasterboard



**WL0100**  
Suction Cup

## PHOTOMETRIC DATA

Note: All photometry is 3000K



Job Name/Date:

Fixture Type Designation: