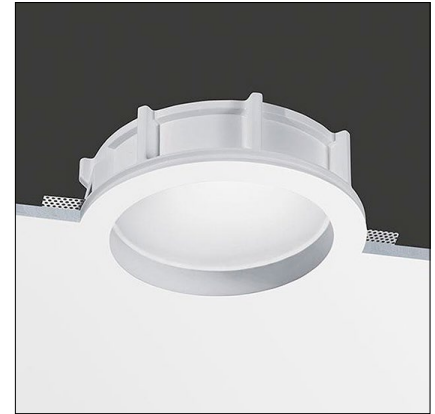


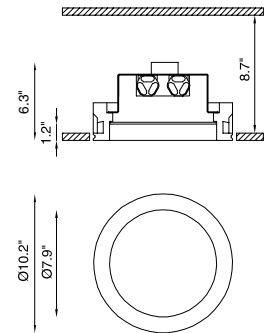
Oris IP65 is a recessed luminaire made of Coral Waterout® for installation in walls or ceilings inside spas, wellness clubs or moist environments as well as outdoor areas. It has an aperture of Ø7.9" with a wide 40° beam and 3000K as standard.



TECHNICAL DATA

Wattage / Input	40W (1050mA - BU5381) 2 x 6.5W (350mA - BU5388)
Power Supply	Remote, not included. See page 2.
Construction	Body: Coral Waterout®
CCT	3000K (2700K, 4000K on request, consult factory)
CRI	>90
BUG Rating	B1-U0--G0
LED Lumens	2589 lm (3000K)
Efficacy	64.7 lm/W (3000K)
Optics	40° Wide Beam
Finishes	Unfinished
Fixture Dimensions	Ø10.2" x 6.3" h
Cut-Out Dimensions	Ø10.7"
Aperture	Ø7.9"
Fixture Weight	8.8 lbs
IP Rating	IP65

Fixture Dimensions



The body is made of Coral WaterOut® a unique patented composite material highly resistant to water penetration - made from modifying the structure of Coral®. This water-repellant effect remains unchanged over time as it is not a matter of a superficial finish, but rather a structural feature of the material itself.

This material is therefore ideally suited to IP65/IP44-rated recessed lighting, suitable for use in external environments, and ideal for light systems in spas, wellness clubs, massage centres, swimming-pools, bathrooms, and all other locations where water and humidity restrict the choice of technical lighting.

ORDERING INFORMATION

Example: BU5388.CW.US. Accessories / Power Supplies ordered separately.

	CW	US
Model No.	Finish	
BU5381 (Non-Dim)	CW - Coral Waterout®	US
BU5388 (Dimmable)		

Job Name/Date:

Fixture Type Designation:

SUGGESTED POWER SUPPLIES

1050mA - 40W

Part Number	Description	Input/Output	# of Fixtures - 40W
PPLT00467-P	0-10V Dimming to 1.0%	120-277VAC to 1050mA, 50W, Class 2, DAMP	1-1
PPLT00679	0-10V Dimming to 10%	120-277VAC to 1050mA, 100W, Class 2	2-2

SUGGESTED POWER SUPPLIES

350mA - 2x6.5W

Part Number	Description	Input/Output	# of Fixtures - 2x6.5W
PPLT00468	Phase Dim (120V only)	120VAC to 350mA, 14W, Class 2	1-1
PPLT00480-P	0-10V Dimming to 1.0%	120-277VAC to 350mA, 30W, Class 2, DAMP	1-2
PPLT00263	Leading / Trailing Edge Dimming to 10% (120V only)	120-277VAC to 350mA, 32W, Class 2	1-1
PPLT00467-P	0-10V Dimming to 1.0%	120-277VAC to 350mA, 50W, Class 2, DAMP	1-2
PPLT00538-P	0-10V Dimming to 0.1%	120-277VAC to 350mA, 100W, Class 2	1-4

Suggested Lutron Compatible

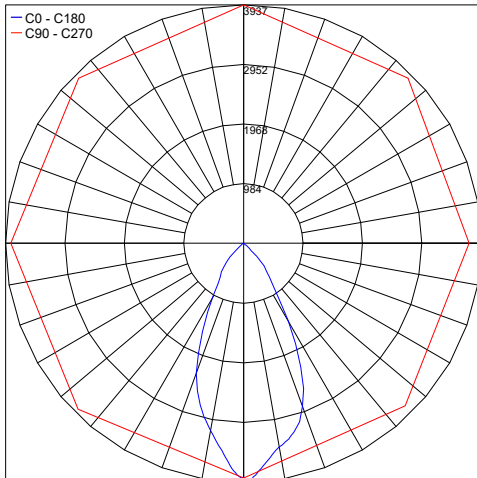
Part Number	Option	Lutron SKU	Dim Range	Description	Input/Output	# of Fixtures
PPLT00516	L3DAE / L3DA3W	L3DA	100%-1%	Hi-Lume™ 1% EcoSystem™ or 1% 3-Wire LED Driver	120-277VAC to 350mA, 13W, Class 2	1-1

For other power supply options consult factory.

PHOTOMETRIC DATA

Note: All Photometry is 3000K

Maximum Candela = 3936.7



Job Name/Date:

Fixture Type Designation: