

TREVI

LINEAR PROFILES FOR UNDERWATER APPLICATIONS

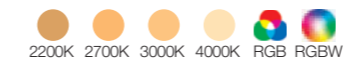


Developed for continuous immersion in pools and fountains, the Trevi collection is also suitable for use out of the water in outdoor applications. It features a tubular, UV-resistant polycarbonate screen with end caps in AISI 316L stainless steel. Trevi's range of light outputs extends from rotationally symmetrical and elliptical optics to diffuse outputs, with white LEDs or in RGB and RGBW versions in different sizes and wattages.

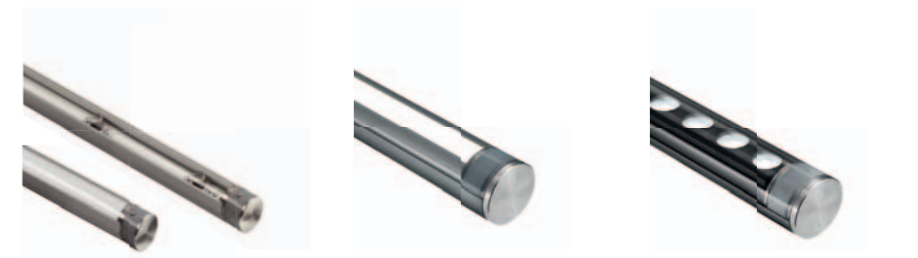


Trevi 2.4, 3000K, 41W, 10°.

TREVI



24VDC
7W up to 75W
CRI 80
White tones: up to 6726 lm (3000K, 38°x94°)
RGB: up to 1197 lm, R: 266 lm G: 765 lm B: 166 lm (diffuse version)
RGBW: up to 4305 lm, R: 486 lm G: 1796 lm B: 336 lm W: 2011 lm (3000K, diffuse)
Optics
Fixed: 10°, 29°, 40°, 42°, 65°, diffuse
Elliptical: 15°x47°, 20°x50°, 36°x94°, 38°x94°, 39°x95°
IP65 IP68 IK10



TREVI 1.0 (optics; diffuse; RGB) Ø0.98"x24.13"	TREVI 2.0 TREVI 2.6 (RGBW) Ø1.97"x25.71"	TREVI 2.3 Ø1.97"x25.71"
TREVI 1.1 (optics; diffuse; RGB) Ø0.98"x47.56"	TREVI 2.1 TREVI 2.7 (RGBW) Ø1.97"x47.76"	TREVI 2.4 Ø1.97"x47.76"
TREVI 1.2 (optics; diffuse; RGB) Ø0.98"x70.98"	TREVI 2.2 TREVI 2.8 (RGBW) Ø1.97"x69.80"	TREVI 2.5 Ø1.97"x69.80"

Accessories:
Clips pair
Pair of tamper-resistant clips



Trevi 2.4, 3000K, 41W, 10°.

