



INSTRUCTIONS PERTAINING TO RISK OF FIRE OR INJURY TO PERSONS. READ ALL INSTRUCTIONS. IMPORTANT SAFETY INSTRUCTIONS. SAVE THESE INSTRUCTIONS.

DANGER - RISK OF SHOCK - DISCONNECT POWER BEFORE INSTALLATION! Please read all instructions before installation.

- Keep these instructions for future reference.
- Must be installed by a qualified electrician in accordance with national and local standards. Designplan is not responsible for fixtures installed without regard to these standards.
- Unauthorized alterations or tampering of product voids warranty.
- The main power connection must be in accordance with local electrical codes.
- Suitable for OUTDOOR applications.



IP66 IK08

Maintenance

Scheduled maintenance must be carried out once a year on all lighting devices, regardless of appliance class and type of use. It must include the following operations:

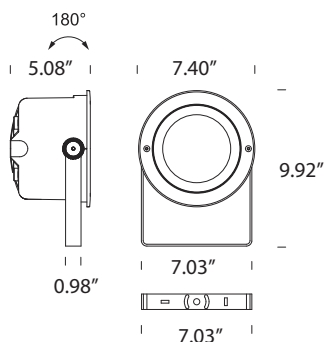
- Periodically clean fixtures to remove dirt from gratings and screw heads.
- Check tightness of screws on various parts of the device.
- Check that all cable glands and cables are intact and tight. Check that the glass or plastic lens is intact, and replace it if broken or damaged.
- The internal components such as the ballast, driver, washers and screws must not show clear signs of oxidation or rust. Clear traces of rust and oxidation will indicate the presence of water inside the device.
- In the case of damage, the components must be replaced by original components or spare parts.

ASTER ROUND RGBW

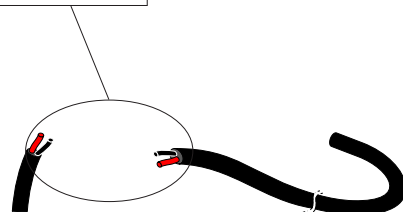
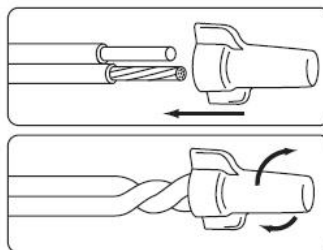
36W, REMOTE 24VDC

installation instructions

DIMENSIONS

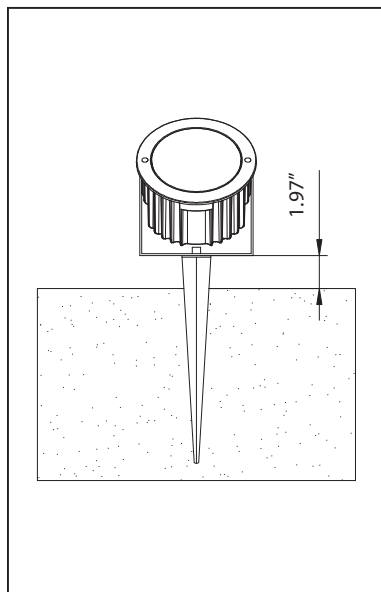


Use gel-filled waterproof wire-nuts for wire connections.



GENERAL PRESCRIPTION

The safety of fixture is guaranteed only when used in accordance with the following instructions, therefore it is necessary to keep them. Eventual tampering, transformations of fixture and wrong installations cause the loss of every guarantee. Before carrying out any installation or maintenance procedure, switch the electric off. THE FIXTURE IS IN CLASS I AND THEREFORE IT CAN BE USED ONLY FOR INSTALLATION WITH EARTH LINE.



Fixing in the ground.

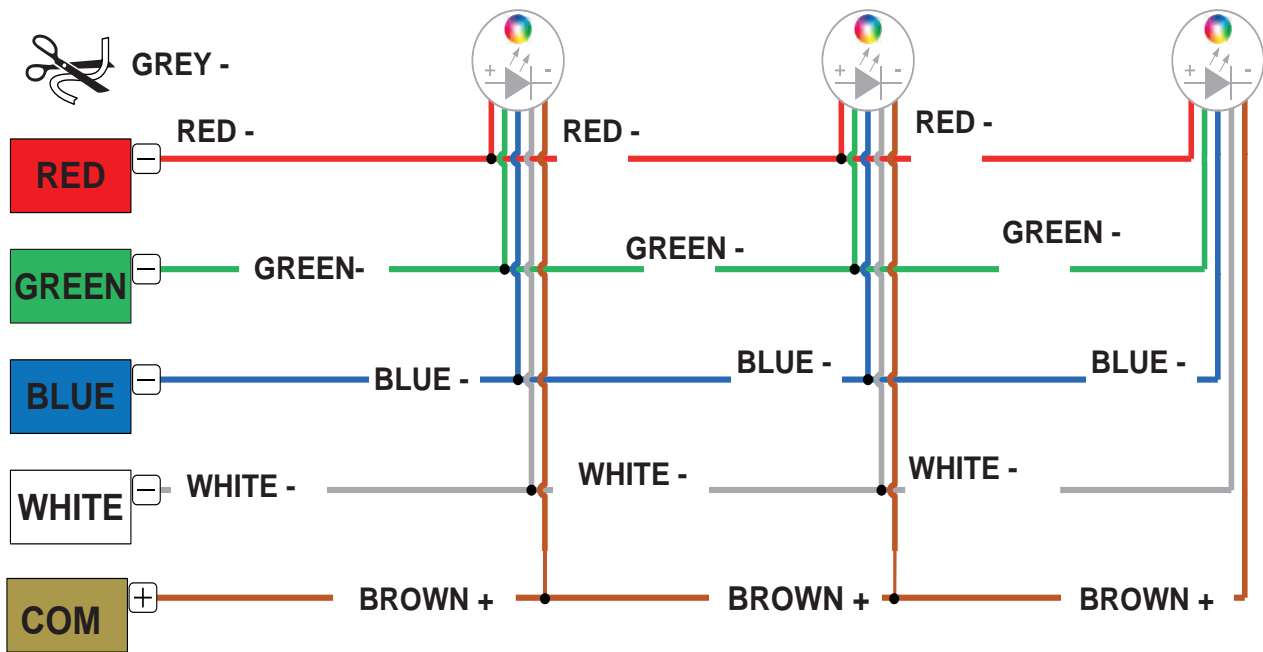
To fix the galvanized spike to relative bracket and to fix it in the ground. Minimum distance of **1.97"** between ground and bracket of fixture in order to avoid direct contact of painted parts with humidity and chemical elements in the ground.

Note: Never install the fixtures in the ground with wrong incline because this could be the cause of dirty deposite and permanent submersion of fixture. The parts of the fixture are damaged owing to stagnation and aggressive chemical elements. The fixture must be protected from direct contact with the ground.

Wiring Diagram

RGBW Versions

24VDC
(Static White Parallel Connection)



The individual lamps must be connected in parallel.
Only power up the system once all the lamps have being connected.

- Only power up the system once all the lamps are connected. Connecting an individual lamp to an active power supply may cause the lamp to break due to over-voltage.
- Lamps and power supply units must be installed in well-ventilated boxes or locations to allow a natural heat diffusion and avoid the devices overheating.
- On the power system, install a surge protection device to reduce the intensity of any voltage spikes to protect the lighting fixtures from the risk of damage.
- Fixture NOT suitable for covering with thermally insulating material.