



INSTRUCTIONS PERTAINING TO RISK OF FIRE OR INJURY TO PERSONS. READ ALL INSTRUCTIONS. IMPORTANT SAFETY INSTRUCTIONS. SAVE THESE INSTRUCTIONS.

DANGER - RISK OF SHOCK - DISCONNECT POWER BEFORE INSTALLATION! Please read all instructions before installation.

- Keep these instructions for future reference.
- Must be installed by a qualified electrician in accordance with national and local standards. Designplan is not responsible for fixtures installed without regard to these standards.
- Unauthorized alterations or tampering of product voids warranty.
- The main power connection must be in accordance with local electrical codes.
- Suitable for OUTDOOR applications.



IP65 IK08

Maintenance

Scheduled maintenance must be carried out once a year on all lighting devices, regardless of appliance class and type of use. It must include the following operations:

- Periodically clean fixtures to remove dirt from gratings and screw heads.
- Check tightness of screws on various parts of the device.
- Check that all cable glands and cables are intact and tight. Check that the glass or plastic lens is intact, and replace it if broken or damaged.
- The internal components such as the ballast, driver, washers and screws must not show clear signs of oxidation or rust. Clear traces of rust and oxidation will indicate the presence of water inside the device.
- In the case of damage, the components must be replaced by original components or spare parts.

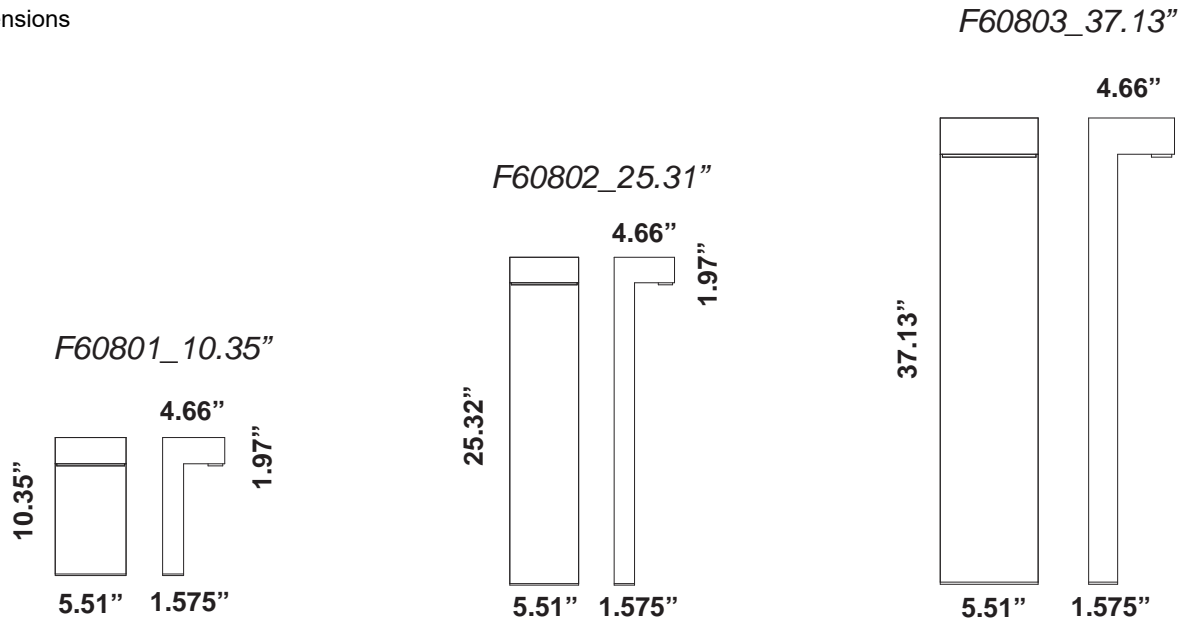
BRICK BOLLARD

10W, INTEGRAL 120VAC

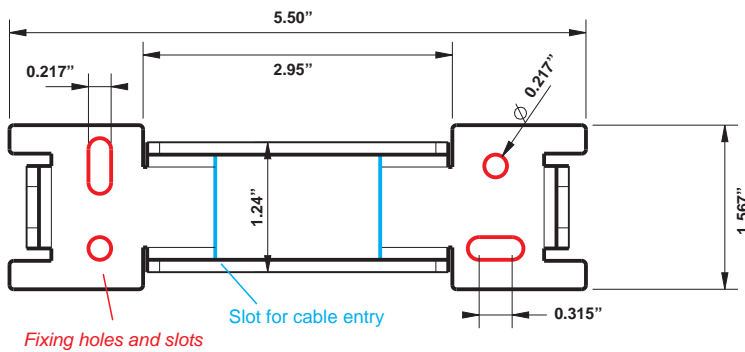
designplan®

installation instructions

Dimensions

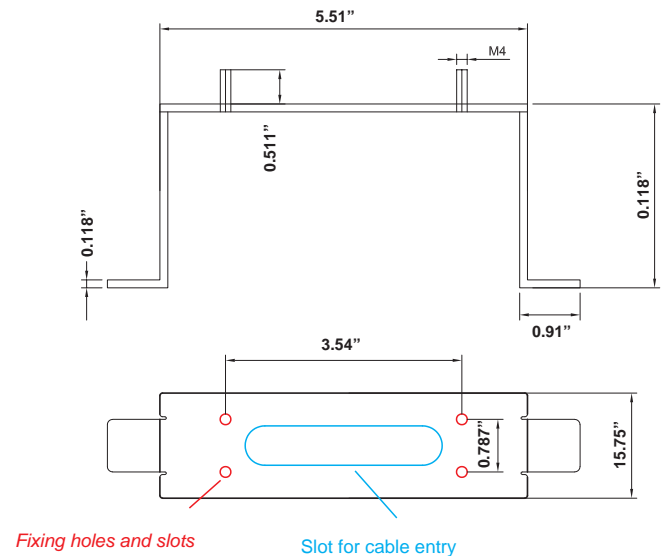


Fixing base



Dimensions

Anchor bolt

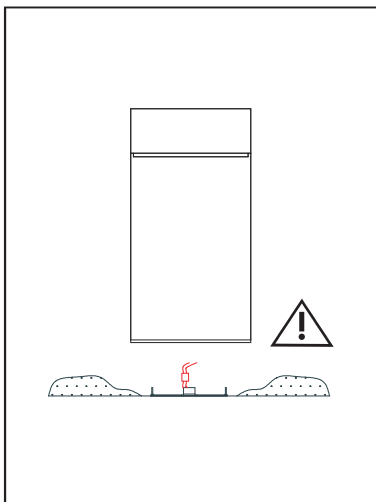
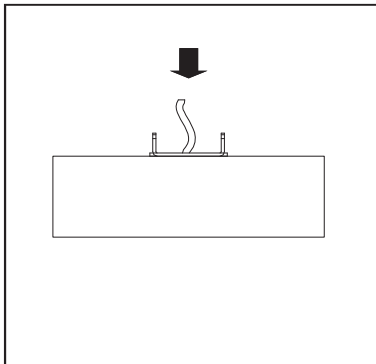
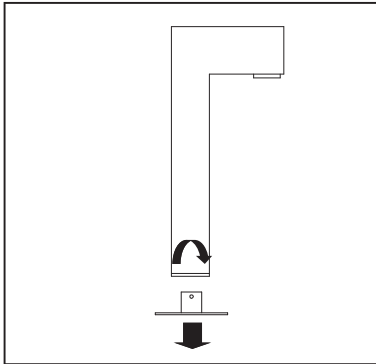


BRICK BOLLARD

10W, INTEGRAL 120VAC

designplan®

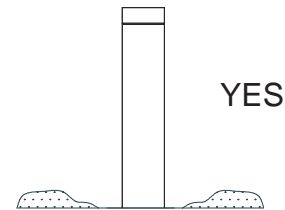
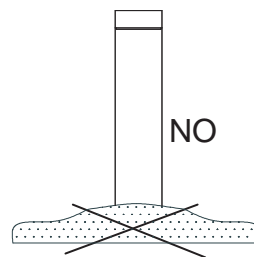
installation instructions



Fixing in the ground

To make a plint to fix the product base. To make fixing holes (A) and to put the tirax. To avoid direct contact between base of fitting pole with the ground in order to avoid any contact between aluminium parts and humidity and chemical element (C).

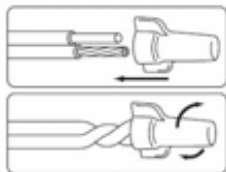
To clear periodically metallic parts that may be in contact with ground. Never install the fitting in the ground with wrong incline that may be the cause of dirty deposit and permanent submersion. The fitting parts are damaged owing to stagnation and aggressive chemical elements.



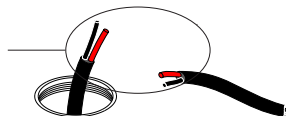
Feeders

After fixing the base in the ground to connect the cable out of the product to feeder by water tight dividing-connection with IP67 minimum.

To be sure that product is fixed correctly to the base and screws positioned correctly. We suggest you a correct clearing cycle on the product to guarantee a perfect working during the time.



- Use gel-filled waterproof wire-nuts for wire connections.



- It is the contractor's responsibility to caulk around the edges between the fixture and the mounting surface, to satisfy wet label requirements.
- It is the contractor's responsibility to install Remote Driver in a suitable electrical enclosure.