

SLIM

IT'S ALL ABOUT THE POWER. SLIM MANAGES TO COMBINE BOTH SIZE AND POWER TO CREATE A HIGH-PERFORMANCE, EASY TO INSTALL, AND COMPACT PRODUCT. IT IS ALSO VERY FLEXIBLE, IN CASE YOU ARE CALLED TO ILLUMINATE ELEGANT RESIDENTIAL CONTEXTS, PUBLIC SPACES. OR A MUSEUM. SLIM WILL ALWAYS ANSWER YOUR CALL.

COMMON FEATURES:

- DIE CAST(ED) ENAB46100 ALUMINUM HOUSING.
- HIGH-RESISTANCE DOUBLE PAINTING PROCESS (UNI ISO9227:2012 SALINE TEST COMPLIANT).
- A4 STAINLESS STEEL SEALING ALLEN SCREWS.
- EXTRA CLEAR TEMPERED GLASS SCREEN.
- SINGLE-CABLE INPUT, PRE-ASSEMBLED WITH NEOPRENE CABLE AND IP68 WATER-STOP FAST CONNECTOR.
- SILICON GASKET.
- COMPLIANT EN60598-1 AND RELATED ANNEX.

APPLIQUE FEATURES:

- STAINLESS STEEL 316L BRACKET.

FLOODLIGHT FEATURES:

- STAINLESS STEEL BRACKET 316L.
- SINGLE-CABLE INPUT, PRE-ASSEMBLED WITH NEOPRENE CABLE AND IP68 WATER-STOP FAST CONNECTOR.

POLE-MOUNT FEATURES:

- STAINLESS STEEL BRACKET 430.
- SINGLE-CABLE INPUT, PRE-ASSEMBLED WITH NEOPRENE CABLE AND IP68 WATER-STOP FAST CONNECTOR.

designplan® 

79 Trenton Avenue
Frenchtown, NJ 08825

www.designplan.com

Tel: (908) 996-7710
Fax: (908) 996-7042



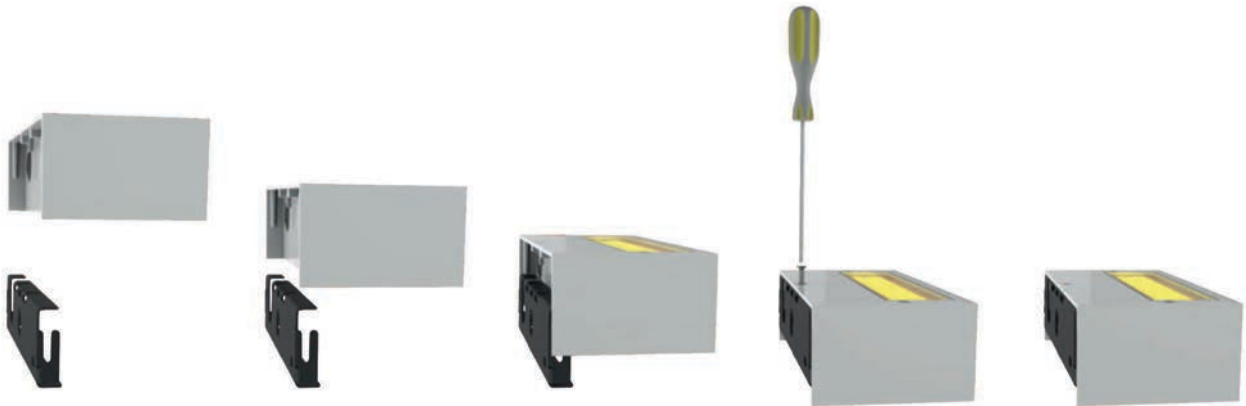


LED INNOVATION

FOR FRANCESCO, THE LIGHT SOURCE IS THE CORNERSTONE OF DESIGN. THEIR ABILITY TO APPLY THEIR ENGINEERING KNOWLEDGE OF DIODES ALLOWS FRANCESCO TO CONSTANTLY BE AT THE FOREFRONT IN TERMS OF LIGHT AND ITS PRODUCTION SYSTEMS, FROM THE MANAGEMENT OF INCOMING POWER TO SYSTEMS OF HEAT DISSIPATION, REFLECTION AND REFRACTION OF THE LIGHT BEAM, MAKING USE OF HIGHLY SPECIALIZED AND DEDICATED COLLABORATORS. SLIM IS NO EXCEPTION, WITH ITS RENEWED RANGE OF LEDS WITH INCREASED POWER AND SPECIFIC DESIGN FOR THE ENHANCEMENT OF STRUCTURES, ROADS OR EVEN CYCLE PATHS.



FLUSH MOUNT

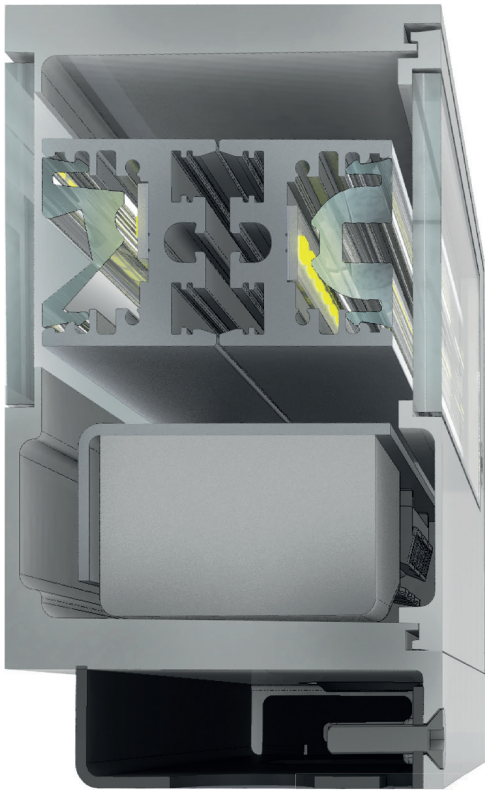


AN EFFICIENT AND RELIABLE PRODUCT CANNOT BE ASSOCIATED WITH FRIVOLOUS DETAILS. THE APPLIQUE VERSION OF SLIM BOASTS A COMPLETELY CONCEALED FIXING SYSTEM, WHICH ALLOWS FOR EASY INSTALLATION AND A CLEAN AND MINIMAL RESULT LIKE THE DESIGN THAT CHARACTERIZES IT: JUST FASTEN THE SPECIAL STEEL PLATE TO THE WALL, SLIDE IT OVER THE BODY OF THE LAMP AND SCREW. IT COULDN'T BE ANY EASIER!

LARGE OR SMALL, ALWAYS SLIM

OFTEN VERY POWERFUL LIGHT FIXTURES SEEM BULKY, DUE TO THEIR COMPLEX INNER WORKINGS.

AT FRANCESCO NI WE HAVE DEDICATED PART OF OUR RESEARCH TO THE MINIATURIZATION OF ALL THE ELEMENTS THAT MAKE UP THE SLIM SERIES, TO BE ABLE TO MAINTAIN THE VERY HIGH LUMINOUS FLUXES THAT THIS TYPE OF PRODUCT REQUIRES BUT AT THE SAME TIME REDUCE THE OVERALL DIMENSIONS TO THEIR MINIMUM AND HIDE EVERY MECHANICAL ELEMENT FROM VIEW TO PRESERVE THE SLEEKNESS WE HAVE ACCUSTOMED YOU TO FOR MANY YEARS.



BRIGHTEN UP YOUR WAY

WE HAVE INCREASED THE POWER OF THE PRODUCT AND ITS LIGHT OUTPUT TO IMPROVE USE ON CYCLE PATHS, IN LARGE CAR PARKS AND URBAN STREET LIGHTING. (IN OTHER WORDS, IN SITUATIONS WHERE LIGHTING IS NOT JUST AN AESTHETIC FEATURE, BUT ALSO NECESSARY FOR THE SAFETY OF VIEWERS).











SLIM MINI APPLIQUE



MONO EMISSION



DOUBLE EMISSION

PERFORMANCE DATA

TRUE POWER (W)	11.5
TRUE LUMENS (3000K)	1093 (.20)
TRUE LUMENS (4000K)	1155 (.20)
L90 LIFETIME (HRS)	72,000 (Ta 35°C)

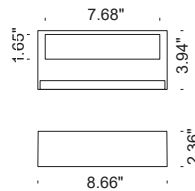
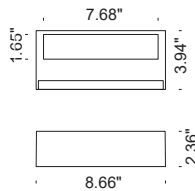
TRUE POWER (W)	22.0
TRUE LUMENS (3000K)	2157 (.20)
TRUE LUMENS (4000K)	2278 (.20)
L90 LIFETIME (HRS)	72,000 (Ta 35°C)

BUILD DATA

NOMINAL VOLTAGE	120V 50/60Hz
POWER SUPPLY	INCLUDED ON-OFF
EXTERNAL CABLE	SINGLE INPUT
PROTECTION RATING	NOT PRESENT
	IP66 - IK08

NOMINAL VOLTAGE	120V 50/60Hz
POWER SUPPLY	INCLUDED ON-OFF
EXTERNAL CABLE	SINGLE INPUT
PROTECTION RATING	NOT PRESENT
	IP66 - IK08

DIMENSIONS



CODE COMPOSITION



● FINISH

- .1 - ANTHRACITE
- .2 - PURE WHITE (RAL9010)
- .4 - ALU GREY (RAL9006)
- .8 - DARK BROWN

■ LED COLOR

- .2 - 2700°K - CRI > 80
- .3 - 3000°K - CRI > 80
- .4 - 4000°K - CRI > 80

▲ BEAM

- .20 - 20° NARROW
- .50 - 35° MEDIUM
- .06 - ASYMMETRICAL
- .07 - WALL WASHER



- .1 - ANTHRACITE
- .2 - PURE WHITE (RAL9010)
- .4 - ALU GREY (RAL9006)
- .8 - DARK BROWN

- .2 - 2700°K - CRI > 80
- .3 - 3000°K - CRI > 80
- .4 - 4000°K - CRI > 80

- .20 - 20° NARROW
- .50 - 35° MEDIUM
- .06 - ASYMMETRICAL
- .07 - WALL WASHER

SLIM APPLIQUE



MONO EMISSION

MONO EMISSION

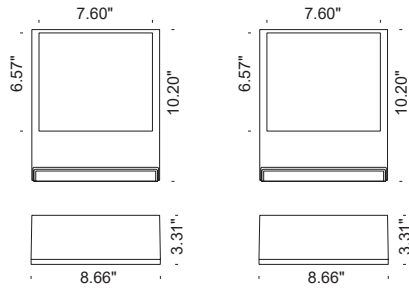
PERFORMANCE DATA

TRUE POWER (W)	26.0W	45.3W
TRUE LUMENS (3000K)	2680 (.01)	5640 (.36)
TRUE LUMENS (4000K)	2792 (.01)	5875 (.36)
L90 LIFETIME (HRS)	90,000 (Ta 35°C)	90,000 (Ta 35°C)

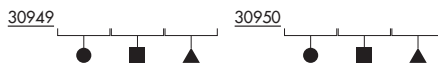
BUILD DATA

NOMINAL VOLTAGE	120V 50/60Hz	24VDC - 4XPWM-CV
POWER SUPPLY	INCLUDED ON-OFF	SEE END OF SECTION
EXTERNAL CABLE	SINGLE INPUT	SINGLE INPUT
	NOT PRESENT	NOT PRESENT
PROTECTION RATING	IP66 - IK08	IP66 - IK08

DIMENSIONS



CODE COMPOSITION



	30949	30950
● FINISH	.1 - ANTHRACITE .2 - PURE WHITE (RAL9010) .4 - ALU GREY (RAL9006) .8 - DARK BROWN	.1 - ANTHRACITE .2 - PURE WHITE (RAL9010) .4 - ALU GREY (RAL9006) .8 - DARK BROWN
■ LED COLOR	.2 - 2700°K - CRI > 80 .3 - 3000°K - CRI > 80 .4 - 4000°K - CRI > 80	.2 - 2700°K - CRI > 80 .3 - 3000°K - CRI > 80 .4 - 4000°K - CRI > 80
▲ BEAM	.01 - 10° SPOT	.36 - 25° MEDIUM .03 - 50° WIDE .53 - 50° x 24° ELLIPTICAL .52 - 24° x 50° ELLIPTICAL .07 - WALL WASHER .06 - ASYMMETRICAL

SLIM FLOODLIGHT



MAX (230V DMX IN)

PERFORMANCE DATA

TRUE POWER (W)	26.0W	45.3W
TRUE LUMENS (3000K)	2680 (.01)	5640 (.36)
TRUE LUMENS (4000K)	2792 (.01)	5875 (.36)
L90 LIFETIME (HRS)	90,000 (Ta 35°C)	90,000 (Ta 35°C)

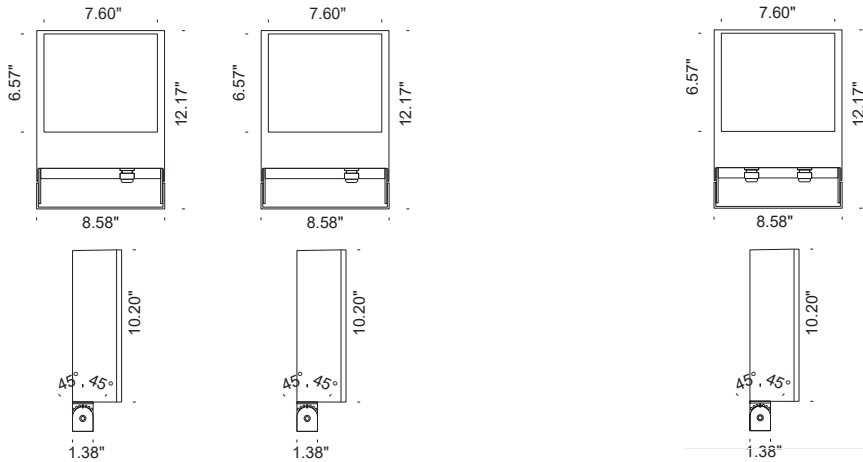
56.0 (ALL COLORS)
R=167, G=419,
B=101, W=579 (6500K)
60,000 - Ta 35°C

BUILD DATA

NOMINAL VOLTAGE	120V 50/60Hz	120V 50/60Hz
POWER SUPPLY	INCLUDED ON-OFF	INCLUDED ON-OFF
EXTERNAL CABLE	SINGLE INPUT	SINGLE INPUT
	3-POLES NEOPRENE	3-POLES NEOPRENE
	IP68 FAST CONNECTION	IP68 FAST CONNECTION
PROTECTION RATING	IP66 - IK08	IP66 - IK08

24VDC - DMX (RDM)
INCLUDED ON-OFF
1 ST INPUT:
3-POLES NEOPRENE
2 ND INPUT:
3-POLES NEOPRENE
IP66 - IK08

DIMENSIONS



CODE COMPOSITION

40906

40907

40909

● FINISH

.1 - ANTHRACITE	.1 - ANTHRACITE
.2 - PURE WHITE (RAL9010)	.2 - PURE WHITE (RAL9010)
.4 - ALU GREY (RAL9006)	.4 - ALU GREY (RAL9006)
.8 - DARK BROWN	.8 - DARK BROWN

.1 - ANTHRACITE
.2 - PURE WHITE (RAL9010)
.4 - ALU GREY (RAL9006)
.8 - DARK BROWN

■ LED COLOR

.2 - 2700°K - CRI > 80	.2 - 2700°K - CRI > 80
.3 - 3000°K - CRI > 80	.3 - 3000°K - CRI > 80
.4 - 4000°K - CRI > 80	.4 - 4000°K - CRI > 80

.5 - RGB + W

▲ BEAM

.01 - 10° SPOT	.36 - 25° MEDIUM
	.03 - 50° WIDE
	.53 - 50° x 24° ELLIPTICAL
	.52 - 24° x 50° ELLIPTICAL
	.07 - WALL WASHER
	.06 - ASYMMETRICAL

.01 - 10° SPOT
.36 - 25° MEDIUM
.32 - 45° WIDE
.38 - 40° x 10°
.70 - 10° x 40°

SLIM POLE-MOUNT



SINGLE HEAD



DOUBLE HEAD

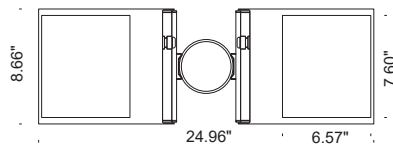
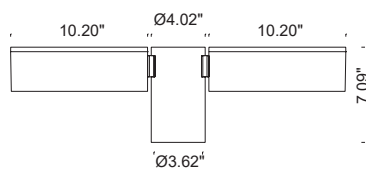
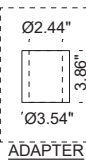
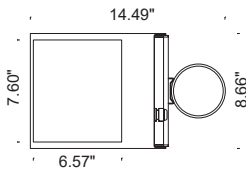
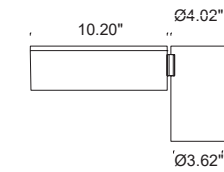
PERFORMANCE DATA

TRUE POWER (W)	46.0W	90.0W
TRUE LUMENS (3000K)	5480 (.08)	10,961 (.08)
TRUE LUMENS (4000K)	5709 (.08)	11,418 (.08)
L90 LIFETIME (HRS)	90,000 (Ta 35°C)	90,000 (Ta 35°C)

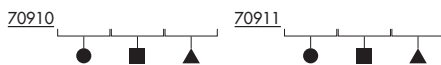
BUILD DATA

NOMINAL VOLTAGE	120V 50/60Hz	120V 50/60Hz INCLUDED
POWER SUPPLY	INCLUDED ON-OFF	ON-OFF 10Kv
OVERVOLTAGE PROTECTION	10Kv	SINGLE INPUT
EXTERNAL CABLE	SINGLE INPUT	3-POLES NEOPRENE 5MTS
PROTECTION RATING	IP66 - IK08	IP66 - IK08

DIMENSIONS



CODE COMPOSITION

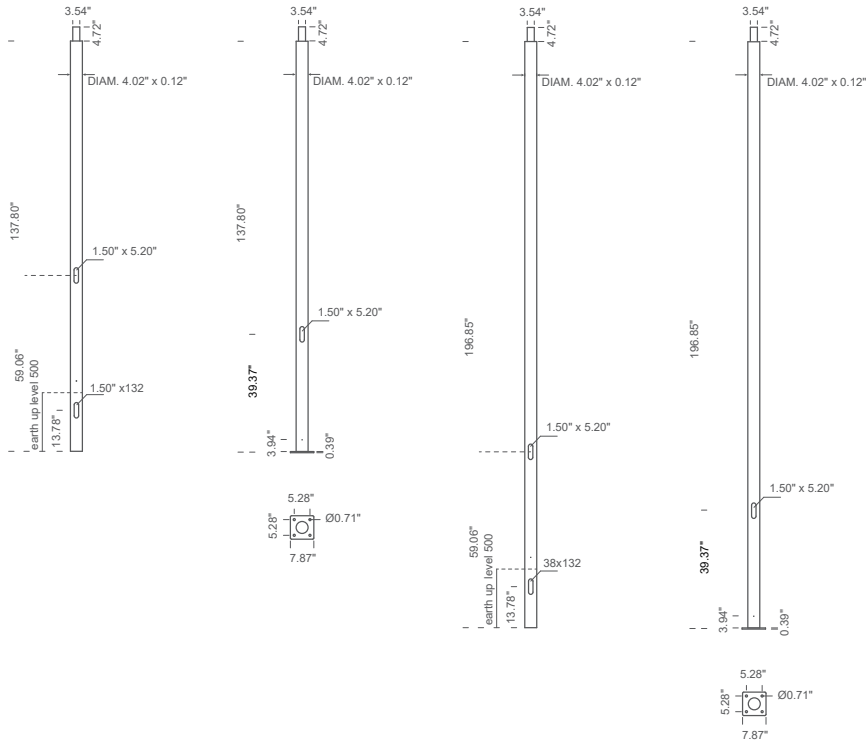


● FINISH	.4 - ALU GREY (RAL9006)	.4 - ALU GREY (RAL9006)
■ LED COLOR	.3 - 3000°K - CRI > 80 .4 - 4000°K - CRI > 80	.3 - 3000°K - CRI > 80 .4 - 4000°K - CRI > 80
▲ BEAM	.08 - STREET .09 - BICYCLE LANES	.08 - STREET .09 - BICYCLE LANES

SLIM POLES

	11.48 ft	11.48 ft	16.40 ft	16.40 ft
BUILD DATA				
TOTAL HEIGHT	137.80"	137.80"	196.85"	196.85"
OVERGROUND HEIGHT	124.41"	124.41"	183.46"	183.46"
EXTERNAL DIAMETER	4.02"	4.02"	4.02"	4.02"
FIXING STYLE	BY BASE (0.16" x Ø0.71")	TO BE BURIED 19.69" DEEP	BY BASE (0.16" x Ø0.71")	TO BE BURIED 19.69" DEEP
INSPECTION PORT	YES	YES	YES	YES
TERMINAL BLOCK	YES	YES	YES	YES

DIMENSIONS



CODE COMPOSITION	90912	90923	90913	90924
● FINISH	.4 - ALU GREY (RAL9006)	.4 - ALU GREY (RAL9006)	.4 - ALU GREY (RAL9006)	.4 - ALU GREY (RAL9006)

POWER SUPPLY

SLIM SUPERIOR (ON-BOARD DMX)

RGB+W CONTROLLER

DMX

D041

TOUCH PANEL

3.39" x 3.39" x 1.42"

C106

RDM ADDRESS PROGRAMMING DEVICE ON DMX CABLE

