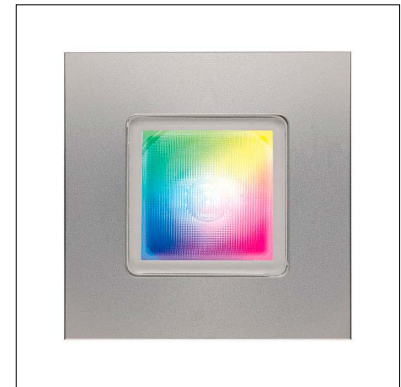


FLEA MAXI RECESSED RGBW

FLEA is a family of IP67-rated round or square recessed wall / in-grade or downlights available in static white, RGBW, and and underwater version (IP68). FLEA MAXI Recessed RGBW is offered round (Ø3.2" or Ø2.8" Total Glass) or square (3.2" sq. or 3.3" sq. Total Glass) with RGBW light, 5 optics options, and 4 standard finishes.



FLEA MAXI Recessed Round Trim RGBW



FLEA MAXI Recessed Square Trim RGBW

Fixture Dimensions - See page 2

TECHNICAL DATA

| | |
|---------------------------|---|
| Wattage | 12W |
| Power Supply | Remote 24VDC, not included. See page 2 |
| Construction | Housing: Anticorodal Aluminum Lens: Extra Clear Tempered Glass |
| CCT | RGBW |
| BUG Rating | — |
| Delivered Lumens | 253 lm: (R) 33 lm, (G) 84 lm, (B) 20 lm, (W) 116 lm (6500K) |
| Efficacy | 21.1 lm/W: (R) 2.8 lm/W lm, (G) 7 lm/W, (B) 1.7 lm/W, (W) 9.7 lm (6500K) |
| Optics | 10°, 25°, 45°, 10°x40°, Diffuse |
| Finishes | Anodized Matte Black, Anodized Aluminum, AISI 316L Stainless Steel, Total Glass |
| Lumen Maintenance | 90,000 hrs, L90 (Ta 35°C) |
| Fixture Dimensions | See page 2 |
| IP Rating | IP67 |
| Impact Resistance | IK10 |
| Walk Over Rating | Up to 3307 lbs |

ORDERING INFORMATION

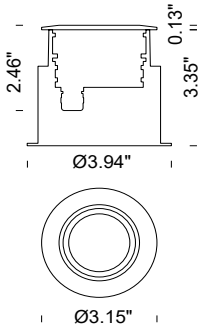
Example: F10159.3.5.02.US. Power Supplies / Accessories ordered separately.

| | | 5 | | US |
|-----------------|--|-----------|-----------------|----|
| Model No. | Finish | CCT | Optics | |
| F10159 - Round | 3 - Anodized Matte Black | 5 - RGB+W | 02 - Spot 10° | US |
| F10160 - Square | 5 - Anodized Aluminum | | 05 - Diffuse | |
| | 6 - AISI 316L Stainless Steel | | 36 - Medium 25° | |
| | 9 - Total Glass <i>(Total Glass only available in trimless)</i> | | 32 - Wide 45° | |
| | | | 38 - 10°x40° | |

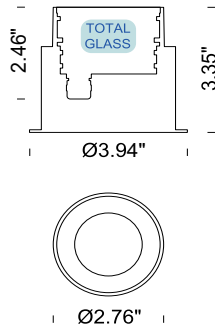
Job Name/Date:

Fixture Type Designation:

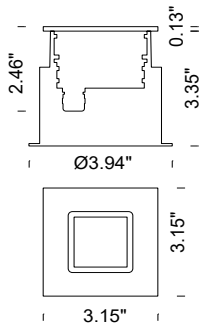
FIXTURE DIMENSIONS



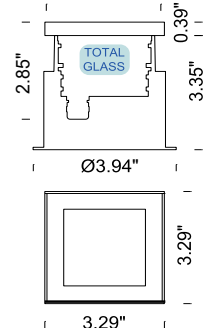
FLEA MAXI Recessed Round Trim



FLEA MAXI Recessed Round Trimless (Total Glass)



FLEA MAXI Recessed Square Trim



FLEA MAXI Recessed Square Trimless (Total Glass)



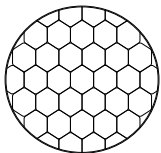
SUGGESTED POWER SUPPLIES

24VDC

| Part Number | Description | Input/Output | # of Fixtures |
|-----------------------------|--------------------------------------|---|---------------|
| PPLT00288-P | DMX / RDM (Field Addressable) / DALI | 120-277VAC to 24VDC, 100W, Class 2, DRY | 1-6 |

For other power supply options consult factory.

ACCESSORIES



A1008

Honeycomb Screen

Order together with the product

Job Name/Date:

Fixture Type Designation: