

FLEA MAXI UNDERWATER RGBW PRO

FLEA is a family of IP67-rated round or square recessed wall / in-grade or downlights available in static white, RGBW, and and underwater version (IP68). FLEA MAXI Underwater RGBW Pro is IP68-rated, and offered round (Ø3.2") or as a floodlight (Ø2.6") with RGBW light, 5 optics options, and made of ASIS 316L Stainless Steel. On board DMX.



FLEA MAXI Underwater Round RGBW PRO



FLEA MAXI Underwater Spot RGBW PRO

Fixture Dimensions - See page 2

TECHNICAL DATA

Wattage	12W
Power Supply	Remote Fountain/Pool Approved 24VDC Power Supply, not included. See page 2.
Construction	Housing: Anticorodal Aluminum Lens: Extra Clear Tempered Glass
CCT	RGBW
BUG Rating	—
Delivered Lumens	253 lm: (R) 33 lm, (G) 84 lm, (B) 20 lm, (W) 116 lm (6500K)
Efficacy	21.1 lm/W: (R) 2.8 lm/W lm, (G) 7 lm/W, (B) 1.7 lm/W, (W) 9.7 lm (6500K)
Optics	10°, 25°, 45°, 10°x40°, Diffuse
Finishes	AISI 316L Stainless Steel
Lumen Maintenance	90,000 hrs, L90 (Ta 35°C)
Fixture Dimensions	See page 2
IP Rating	IP68 (9.84 ft)
Impact Resistance	—

ORDERING INFORMATION

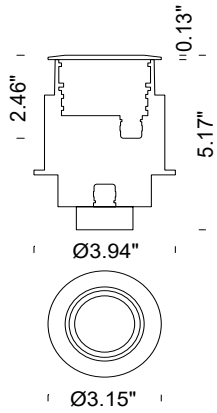
Example: F50129.6.5.02.US. Power Supplies / Accessories ordered separately.

	6	5		US
Model No.	Finish	CCT	Optics	
F50129 - Round	6 - AISI 316L Stainless Steel	5 - RGB+W	02 - Spot 10°	US
F50144 - Spot			05 - Diffuse	
			36 - Medium 25°	
			32 - Wide 45°	
			38 - 10°x40°	

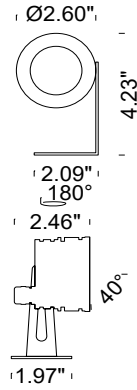
Job Name/Date:

Fixture Type Designation:

FIXTURE DIMENSIONS



FLEA MAXI Underwater Round



FLEA MAXI Underwater Spot

SUGGESTED POWER SUPPLIES

24VDC

Part Number	Description	Input/Output	# of Fixtures
FPV-100EL0024	DMX / RDM (Field Addressable) / DALI	120-277VAC to 24VDC, 100W, Class 2, NEMA 4	1-6

For other power supply options consult factory.

Job Name/Date:

Fixture Type Designation: