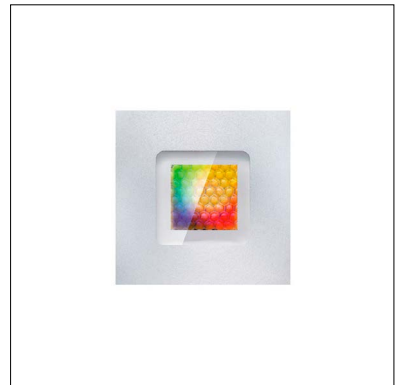


FLEA MINI RECESSED RGBW

FLEA is a family of IP67-rated round or square recessed wall / in-grade or downlights available in static white, RGBW, and and underwater version (IP68). FLEA MINI Recessed RGBW is offered round (Ø1.4" or Ø1.3" Total Glass) or square (1.4" sq. or 1.5" sq. Total Glass) with RGBW light, 2 optics options, and 4 standard finishes.



FLEA MINI Recessed Round Trim RGBW



FLEA MINI Recessed Square Trim RGBW

Fixture Dimensions - See page 2

TECHNICAL DATA

Wattage	5W
Power Supply	Remote 24VDC, not included. See page 2
Construction	Housing: Anticorodal Aluminum Lens: Extra Clear Tempered Glass
CCT	RGBW
BUG Rating	—
Delivered Lumens	174 lm: (R) 25 lm, (G) 52 lm, (B) 13 lm, (W) 84 lm (6500K)
Efficacy	34.8 lm/W: (R) 5 lm/W lm, (G) 10.4 lm/W, (B) 2.6 lm/W, (W) 16.8 lm (6500K)
Optics	30°, Diffuse
Finishes	Anodized Matte Black, Anodized Aluminum, AISI 316L Stainless Steel, Total Glass
Lumen Maintenance	90,000 hrs, L90 (Ta 35°C)
Fixture Dimensions	See page 2
IP Rating	IP67
Impact Resistance	IK10
Walk Over Rating	Up to 3307 lbs

ORDERING INFORMATION

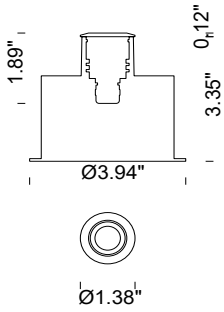
Example: F10112.3.5.02.US. Power Supplies / Accessories ordered separately.

		5		US
Model No.	Finish	CCT	Optics	
F10112 - Round	3 - Anodized Matte Black	5 - RGB+W	02 - Medium 30°	US
F10113 - Square	5 - Anodized Aluminum		05 - Diffused	
	6 - AISI 316L Stainless Steel			
	9 - Total Glass			
	<i>(Total Glass only available in trimless)</i>			

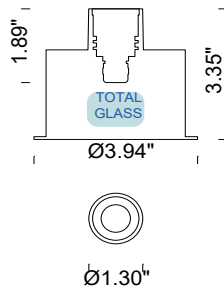
Job Name/Date:

Fixture Type Designation:

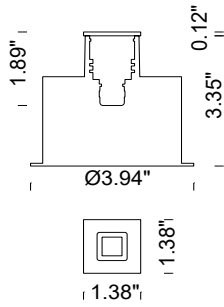
FIXTURE DIMENSIONS



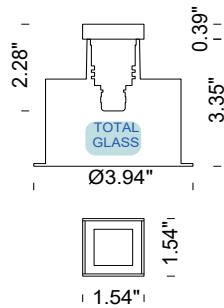
FLEA MINI Recessed Round Trim



FLEA MINI Recessed Round Trimless (Total Glass)



FLEA MINI Recessed Square Trim



FLEA MINI Recessed Square Trimless (Total Glass)



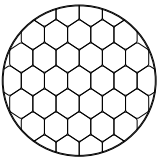
SUGGESTED POWER SUPPLIES

24VDC

Part Number	Description	Input/Output	# of Fixtures
PPLT00288-P	DMX / RDM (Field Addressable) / DALI	120-277VAC to 24VDC, 100W, Class 2, DRY	1-16

For other power supply options consult factory.

ACCESSORIES



A1006

Honeycomb Screen

Order together with the product

Job Name/Date:

Fixture Type Designation: