



INSTRUCTIONS PERTAINING TO RISK OF FIRE OR INJURY TO PERSONS. READ ALL INSTRUCTIONS. IMPORTANT SAFETY INSTRUCTIONS. SAVE THESE INSTRUCTIONS.

DANGER - RISK OF SHOCK - DISCONNECT POWER BEFORE INSTALLATION! Please read all instructions before installation.

- Keep these instructions for future reference.
- Must be installed by a qualified electrician in accordance with national and local standards. Designplan is not responsible for fixtures installed without regard to these standards.
- Unauthorized alterations or tampering of product voids warranty.
- The main power connection must be in accordance with local electrical codes.
- Suitable for OUTDOOR applications.



IP67 IK07

Electrical Connections:

- LED lights must be **connected in parallel** respecting polarities.
- **CHOOSE POWER SUPPLY ACCORDINGLY.** Please consider the voltage through which fixtures are fed as well as the max power consumption.
- **Connect power only if all the fixtures are connected.**
- The power supplies **MUST** be installed in aerated rooms, far from heat sources. Overworking or lack of air circulation will not permit natural dissipation.
- Use only Class 2 type electronic power supply.
- Never use switches on secondary circuit.

ATTENTION: **For In-Grade** - It is the contractor's responsibility to seal the conduit with "Great Stuff" aerosol seal that prevents water and moisture penetration for ultimate protection. Contractor **MUST** use gel-filled wire nuts.

Maintenance

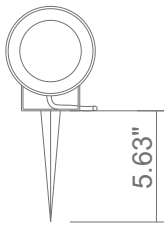
Scheduled maintenance must be carried out once a year on all lighting devices, regardless of appliance class and type of use. It must include the following operations:

- Periodically clean fixtures to remove dirt from gratings and screw heads.
- Check tightness of screws on various parts of the device.
- Check that all cable glands and cables are intact and tight. Check that the glass or plastic lens is intact, and replace it if broken or damaged.
- The internal components such as the ballast, driver, washers and screws must not show clear signs of oxidation or rust. Clear traces of rust and oxidation will indicate the presence of water inside the device.
- In the case of damage, the components must be replaced by original components or spare parts.

GENERAL INSTRUCTIONS

The safety of fixture is guaranteed only when it is used in accordance with following instructions, therefore it is necessary to keep them. Eventual tampering, transformations of fixture and wrong installations cause the loss of every guarantee. Before carrying out any installation or maintenance procedure, switch the electric power off. THE FIXTURE IS IN CLASS I AND THEREFORE IT MUST BE USED FOR INSTALLATION WITH EARTH LINE

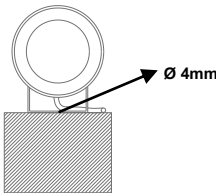
Fixing in the ground.



FIXING

To fix the spike to the relative bracket and to fix it in the ground. Minimum distance of 0.39" between ground and bracket of fixture in order to avoid direct contact of painted parts with humidity and chemical elements in the ground. For versions with fixing in the concrete to use hole of 0.16" on the bracket.

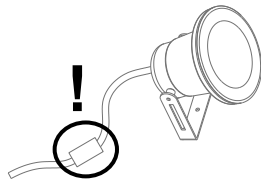
Fixing in the concrete.



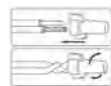
Note: Never install the fixtures in the ground with wrong incline because this could be the cause of dirty deposit and permanent submersion of fixture. The parts of the fixture are damaged owing to stagnation and aggressive chemical elements. The fixture must be protected from direct contact with the ground.

To pay attention !

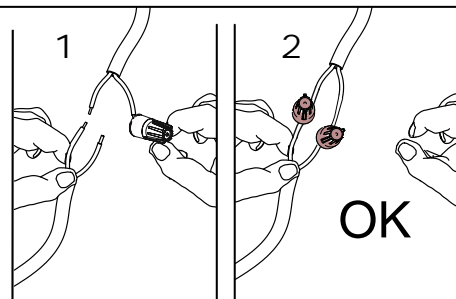
To avoid condensation or infiltration of water inside the luminaire, to use watertight diving -boxes IP68 between our pre-assembled cable and feeder of installation.



- It is the contractor's responsibility to caulk around the edges between the fixture and the mounting surface, to satisfy wet label requirements.



Use gel-filled waterproof wire-nuts for wire connections.



ENG In case of replacement of the lamp you have to respect the parameters indicated inside mark in the fixture.

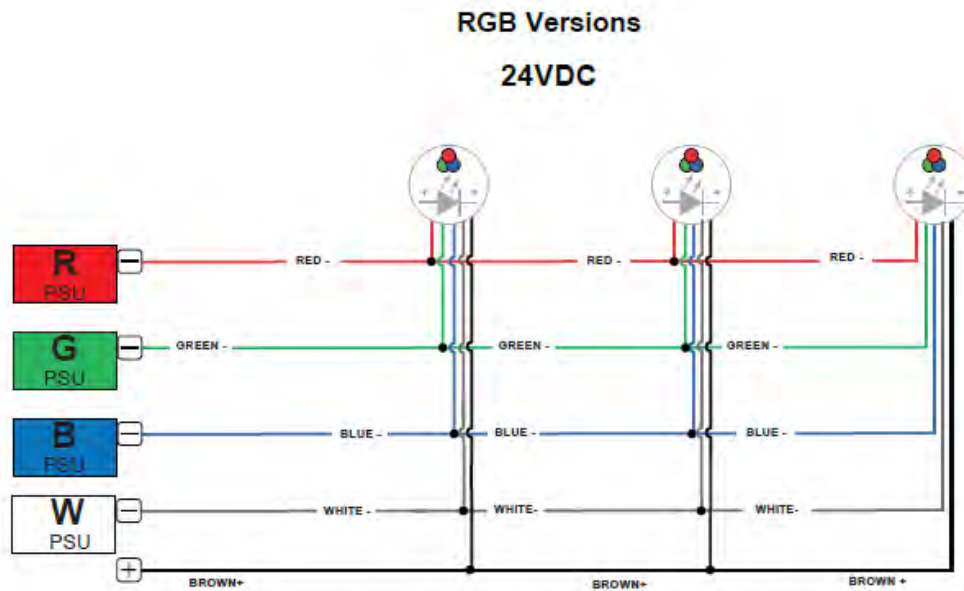
In case of breaking or crack of diffuser to call our company in order to make the exact replacement.

It is important to clear the fixture in order to avoid dirty deposit on the rubber closing gasket and inside the fixture.

To clear the glass without abrasive products.

In case of restitution of the material, after authorization by F.LLI FRANCESCONI & C. SRL you have to turn back the fixture in our company free of charge on our part; the fixture not to be disassembled and you have to leave out a part of feeder (min. 3.94") near the cable blocker.

WIRE DIAGRAM



The individual lamps must be connected in parallel. Only power up the system once all the lamps have been connected.

- Only power up the system once all the lamps are connected. Connecting an individual lamp to an active power supply may cause the lamp to break due to over-voltage.
- Lamps and power supply units must be installed in well-ventilated boxes or locations to allow a natural heat diffusion and avoid the devices overheating.
- On the power system, install a surge protection device to reduce the intensity of any voltage spikes, to protect the lighting fixtures from the risk of damage.
- Fixture NOT suitable for covering with thermally insulating material.