



INSTRUCTIONS PERTAINING TO RISK OF FIRE OR INJURY TO PERSONS. READ ALL INSTRUCTIONS. IMPORTANT SAFETY INSTRUCTIONS. SAVE THESE INSTRUCTIONS.

DANGER - RISK OF SHOCK - DISCONNECT POWER BEFORE INSTALLATION! Please read all instructions before installation.

- Keep these instructions for future reference.
- Must be installed by a qualified electrician in accordance with national and local standards. Designplan is not responsible for fixtures installed without regard to these standards.
- Unauthorized alterations or tampering of product voids warranty.
- The main power connection must be in accordance with local electrical codes.
- Suitable for INDOOR applications.



IP40(RECESSED)

IP20(SURFACE/SUSPENDED)

Electrical Connections:

- LED lights must be **connected in series** respecting polarities.
- **CHOOSE POWER SUPPLY ACCORDINGLY.** Please consider the voltage through which fixtures are fed as well as the max power consumption.
- **Connect power only if all fixtures are connected.**
- The power supplies **MUST** be installed in aerated rooms, far from heat sources. Overworking or lack of air circulation will not permit natural dissipation.
- The electronic power supply is current-stable, therefore it partially compensates the voltage-drop problems related to the cable length; we suggest not to exceed 100 ft.
- Use only Class 2 type electronic power supply.
- Never use switches on secondary circuit.

ATTENTION: For Wall/Ceiling - It is the contractor's responsibility to caulk around all the edges between the fixture and the mounting surface to satisfy wet label requirements.

Maintenance

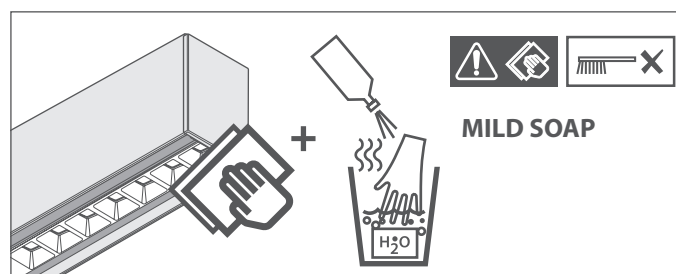
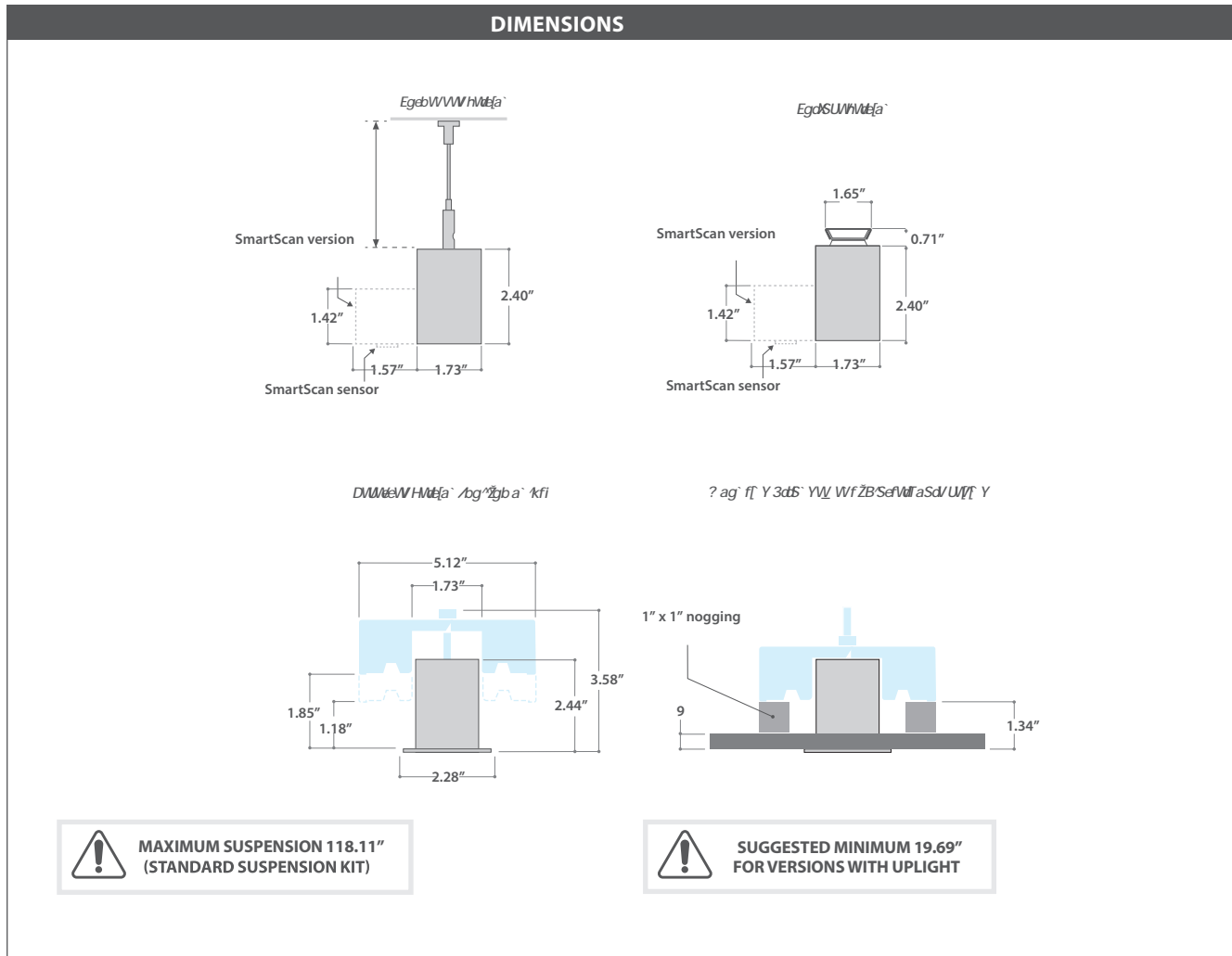
Scheduled maintenance must be carried out once a year on all lighting devices, regardless of appliance class and type of use. It must include the following operations:

- Periodically clean fixtures to remove dirt from gratings and screw heads.
- Check tightness of screws on various parts of the device.
- Check that all cable glands and cables are intact and tight. Check that the glass or plastic lens is intact, and replace it if broken or damaged.
- The internal components such as the ballast, driver, washers and screws must not show clear signs of oxidation or rust. Clear traces of rust and oxidation will indicate the presence of water inside the device.
- In the case of damage, the components must be replaced by original components or spare parts.

8W, 14W, 20W, 31W(55.12" I- SECONDARY STRAIGHT)
16W, 27W, 39W, 63W(110.24" I- PRIMARY OR SECOND)

installation instructions

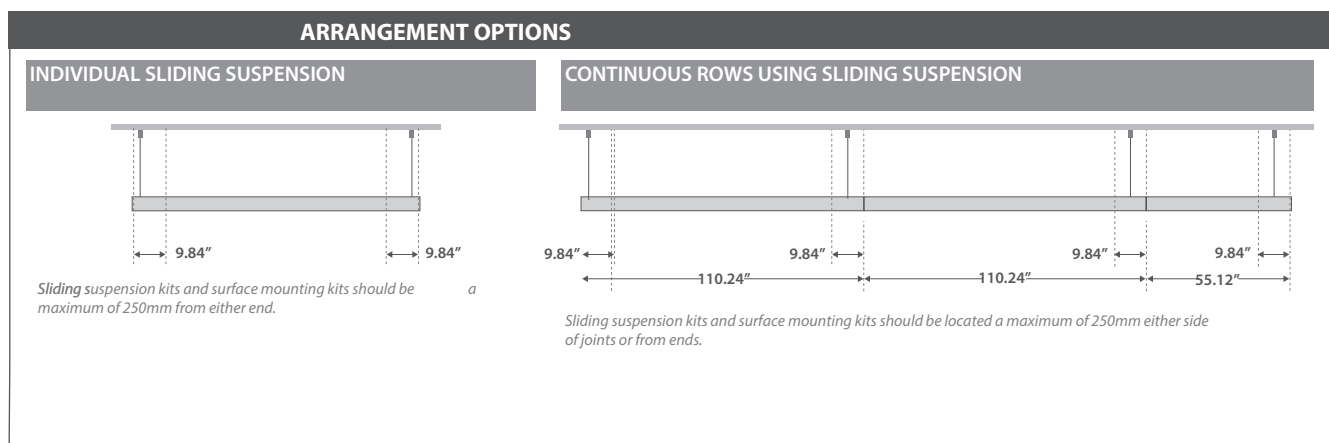
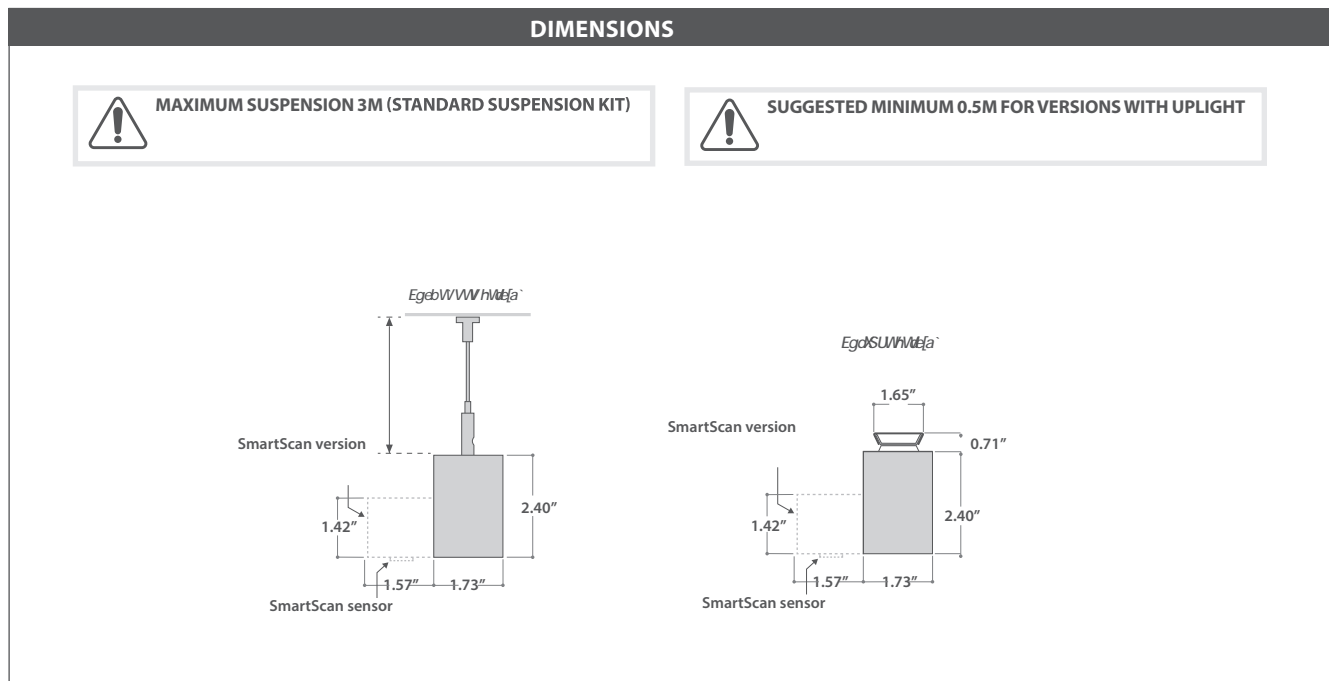
FIXTURE DIMENSION



8W, 14W, 20W, 31W(55.12" I- SECONDARY STRAIGHT)
16W, 27W, 39W, 63W(110.24" I- PRIMARY OR SECOND)

installation instructions

SURFACE INSTALLATION INSTRUCTIONS



FLEXBAR CONTINUOUS

8W, 14W, 20W, 31W(55.12" I- SECONDARY STRAIGHT)
16W, 27W, 39W, 63W(110.24" I- PRIMARY OR SECOND)

installation instructions



IMPORTANT: JOIN LENGTHS AFTER MOUNTING ON CONTINUOUS VERSIONS



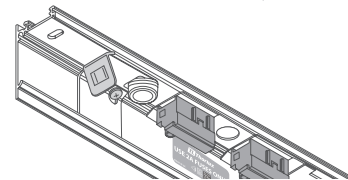
1. PRIMARY AND SECONDARY LUMINAIRES - CONTINUOUS ONLY



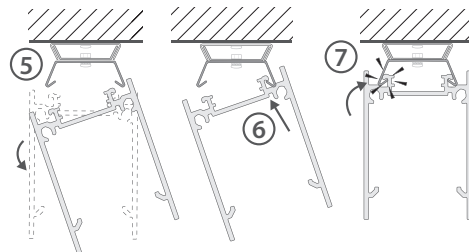
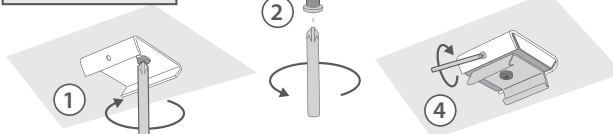
A CONTINUOUS INSTALLATION CONSISTS OF PRIMARY AND SECONDARY LUMINAIRES. ALL INCOMING ELECTRICAL CONNECTIONS ARE MADE TO THE PRIMARY LUMINAIRE. A NEW PRIMARY LUMINAIRE MUST BE USED WITH A NEW ELECTRICAL CONNECTION AT 472.44" INTERVALS.



ONLY 2A FUSES CAN BE USED IN THE PRIMARY LUMINAIRE

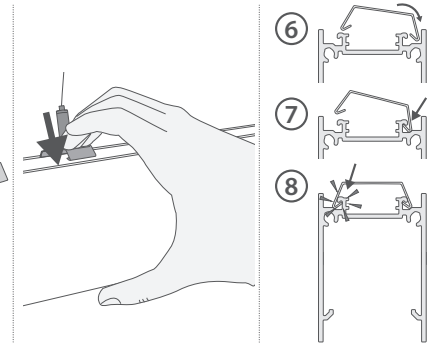
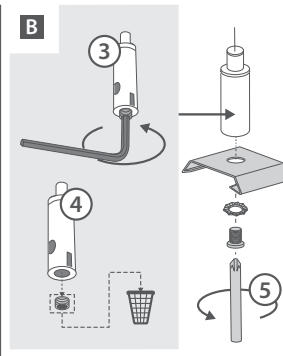
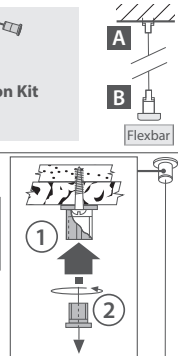


2a. SURFACE MOUNTING



IF CONTINUOUS INSTALLATION CONTINUE TO STEP 3, IF INDIVIDUAL INSTALLATION SKIP TO STEP 7

2b. SUSPENDED MOUNTING



IF CONTINUOUS INSTALLATION CONTINUE TO STEP 3, IF INDIVIDUAL INSTALLATION SKIP TO STEP 7

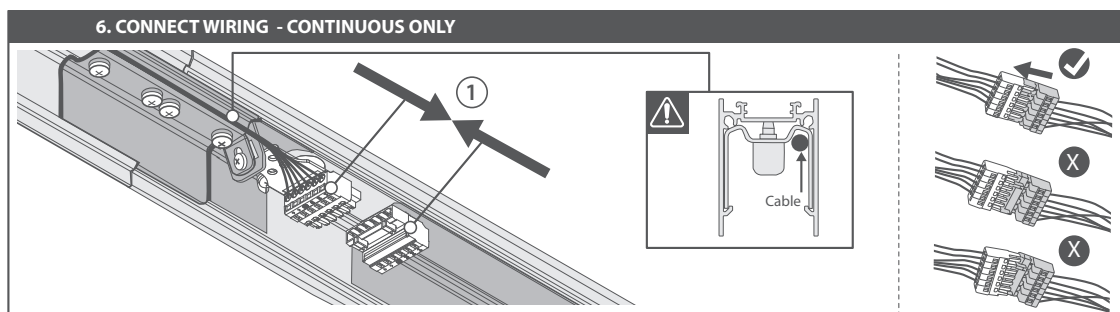
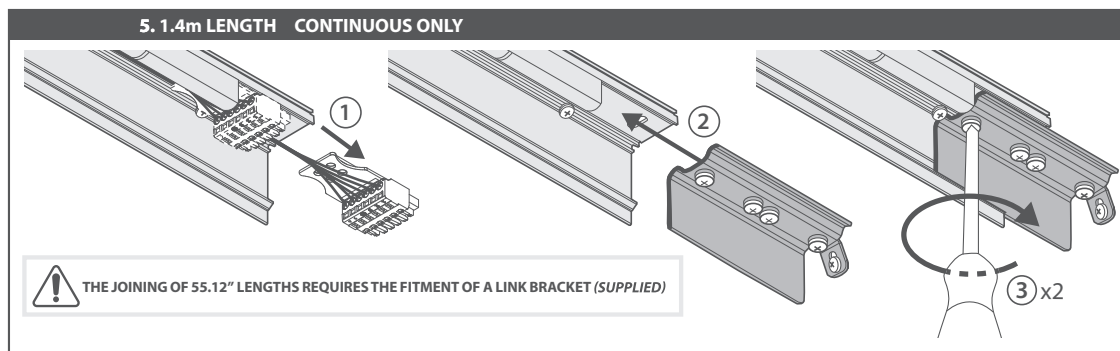
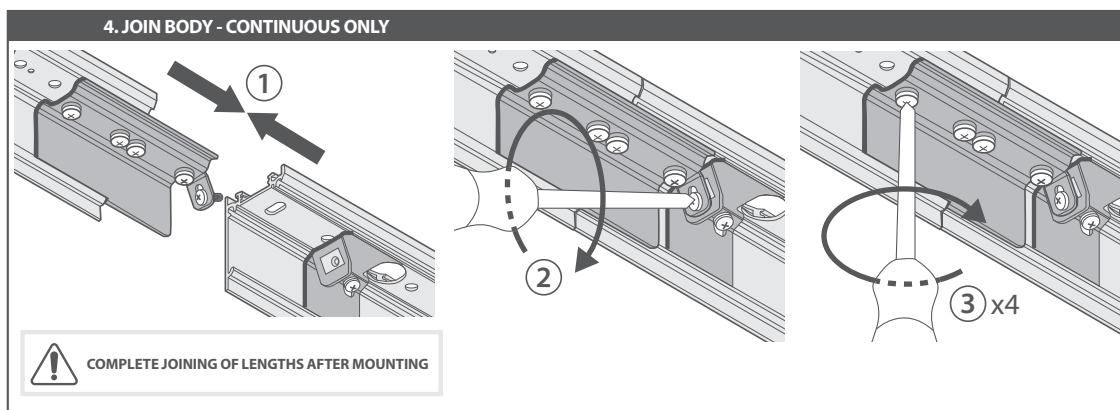
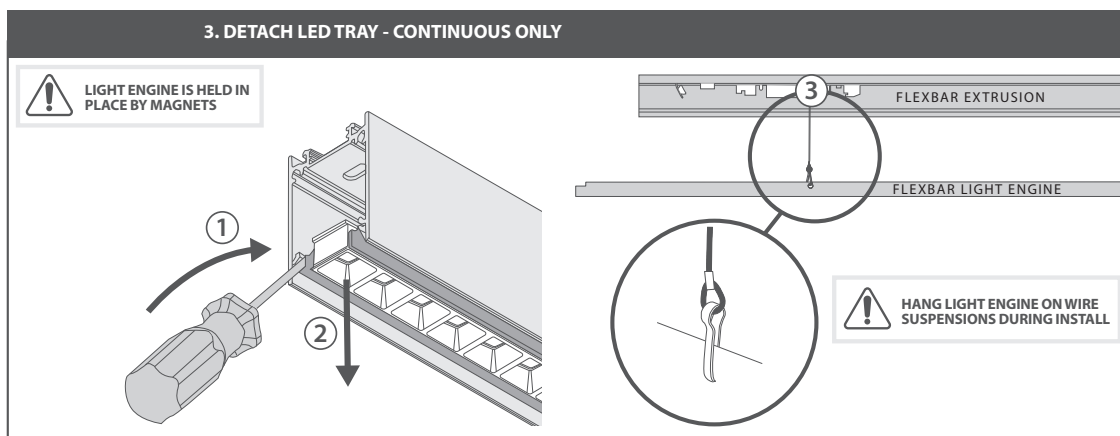


SUGGESTED MINIMUM SUSPENSION OF 0.5M FOR VERSIONS WITH UPLIGHT

FLEXBAR CONTINUOUS

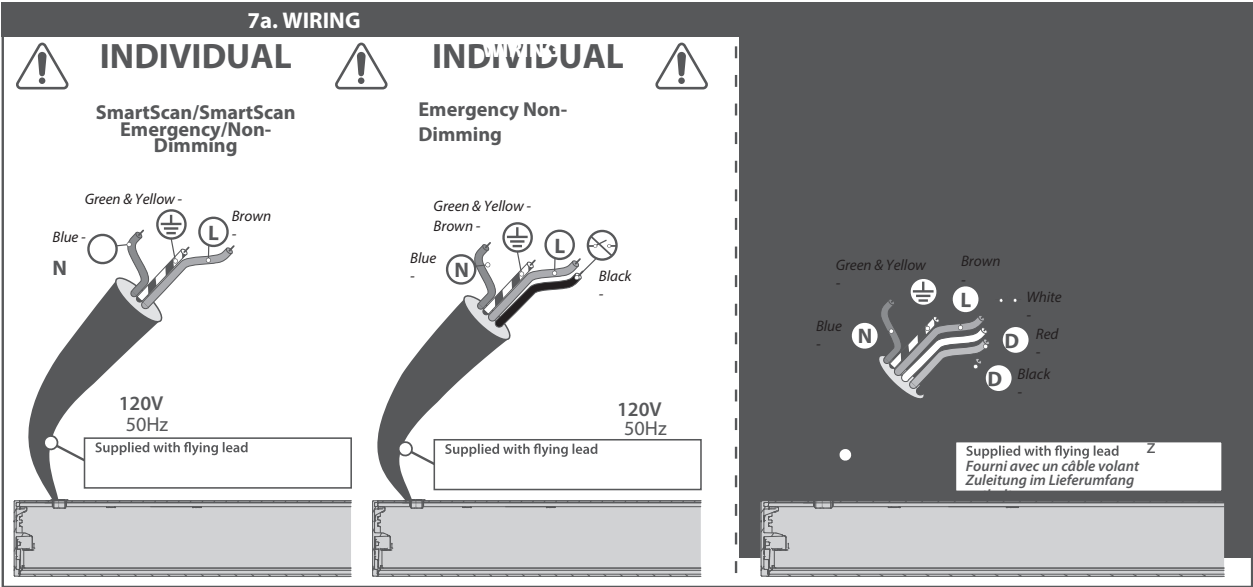
8W, 14W, 20W, 31W(55.12" I- SECONDARY STRAIGHT)
16W, 27W, 39W, 63W(110.24" I- PRIMARY OR SECOND)

installation instructions



8W, 14W, 20W, 31W(55.12" I- SECONDARY STRAIGHT)
16W, 27W, 39W, 63W(110.24" I- PRIMARY OR SECOND)

installation instructions



7b. IMPORTANT INFORMATION

- Maximum weight per suspension = **10kg**. Ensure ceiling can accommodate this weight. Maximum continuous system current = **2A**.
- Primary luminaires have a 2A fuse. If replaced ensure 2A is used.
- Powered circuit must not exceed 472.44",

7c. WIRING

Function	Core
1 Switched live	Brown
2 Perm/Em/	White
3 Earth	Green & Yellow
5 DAL	Red
6 DALI	Black

1 = Switched live
Switched live supply feeds standard, and DALI luminaires not used with 'SS' suffix.

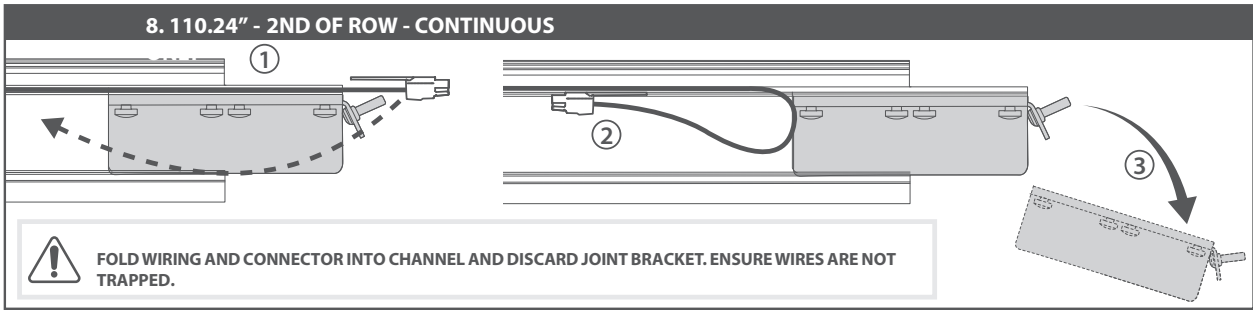
2 = Perm/Em/SmartScan
Permanent live connection feeds all emergency modules and SmartScan luminaires.

3 = Neutral
Neutral

Earth = Earth connection

5 = DALI dimming
DALI control wire

6 = DALI dimming
DALI control wire

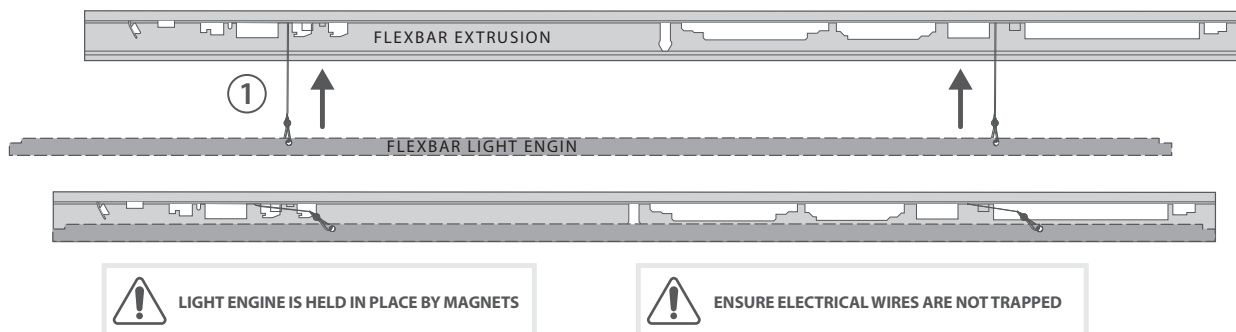


FLEXBAR CONTINUOUS

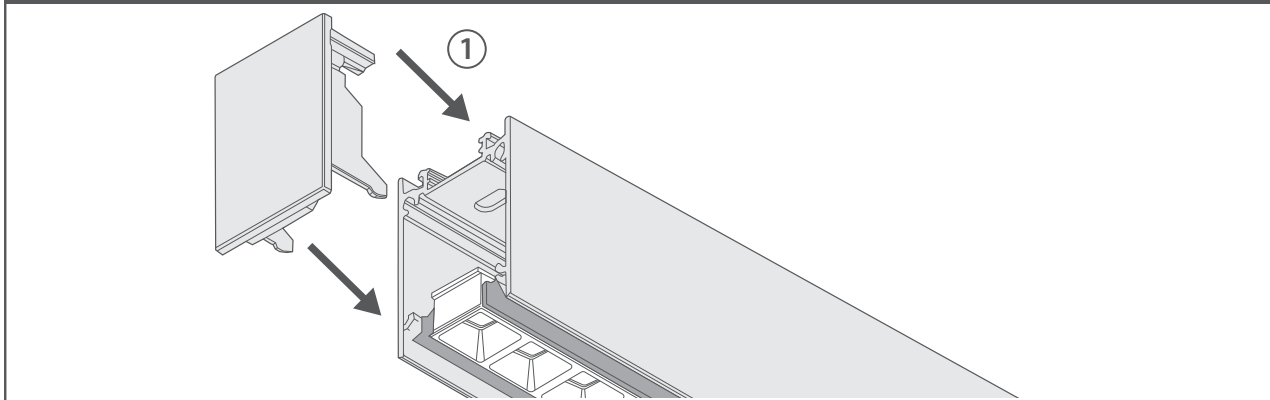
8W, 14W, 20W, 31W(55.12" I- SECONDARY STRAIGHT)
16W, 27W, 39W, 63W(110.24" I- PRIMARY OR SECOND)

installation instructions

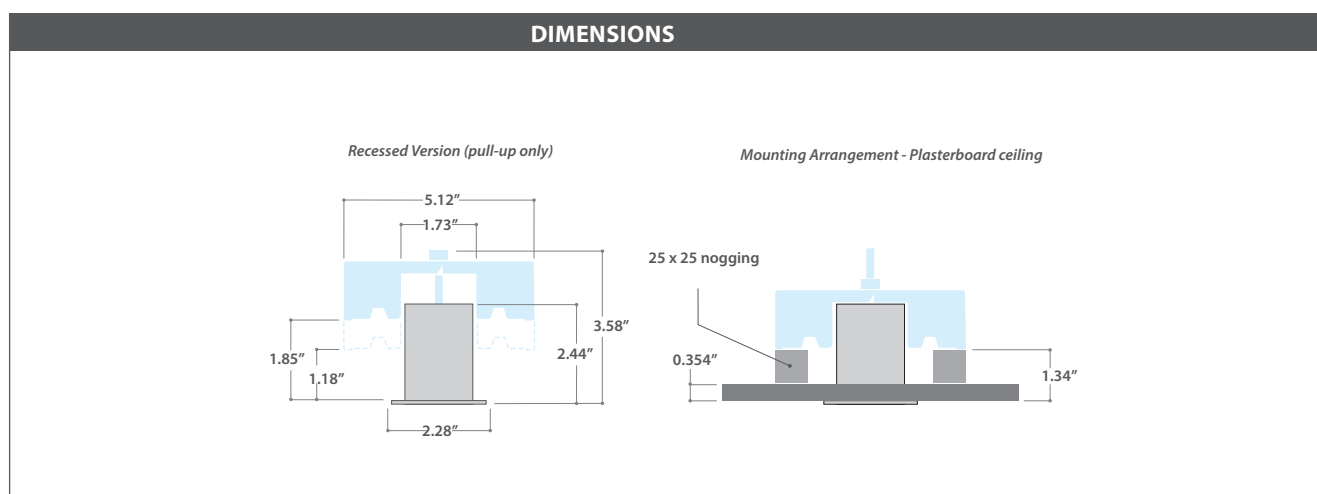
9. ATTACH GEAR TRAY - CONTINUOUS ONLY



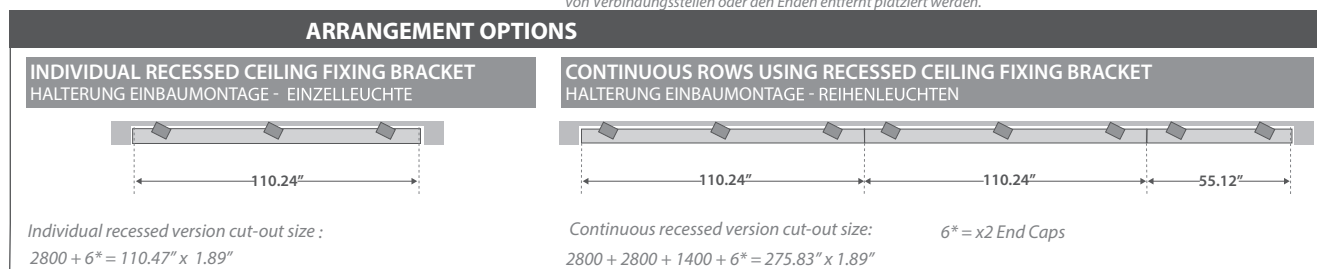
10a. END CAP - CONTINUOUS ONLY



RECESSED INSTALLATION INSTRUCTIONS



von Verbindungsstellen oder den Enden entfernt platziert werden.



FLEXBAR CONTINUOUS

8W, 14W, 20W, 31W(55.12" I- SECONDARY STRAIGHT)
16W, 27W, 39W, 63W(110.24" I- PRIMARY OR SECOND)

installation instructions



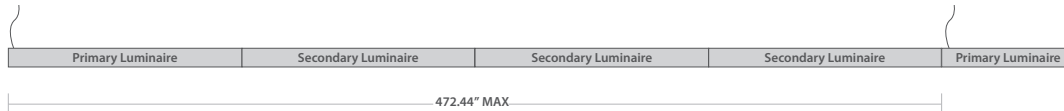
IMPORTANT: JOIN LENGTHS AFTER MOUNTING ON CONTINUOUS VERSIONS



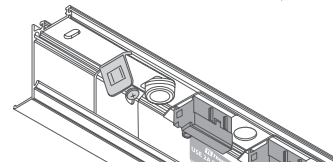
1. PRIMARY AND SECONDARY LUMINAIRES - CONTINUOUS ONLY



A CONTINUOUS INSTALLATION CONSISTS OF PRIMARY AND SECONDARY LUMINAIRES. ALL INCOMING ELECTRICAL CONNECTIONS ARE MADE TO THE PRIMARY LUMINAIRE. A NEW PRIMARY LUMINAIRE MUST BE USED WITH A NEW ELECTRICAL CONNECTION AT 472.44" INTERVALS.



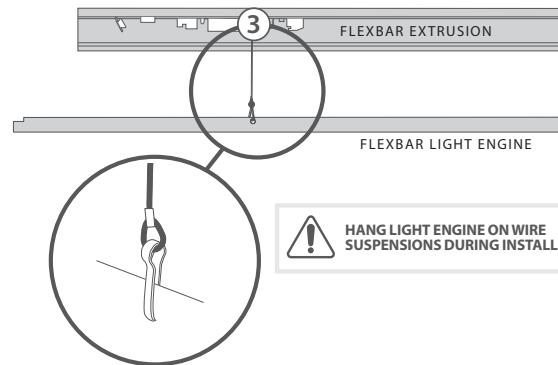
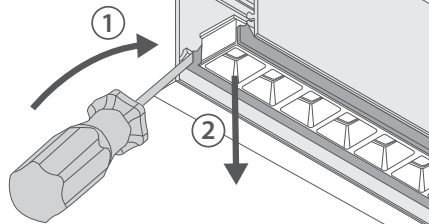
ONLY 2A FUSES CAN BE USED IN THE PRIMARY LUMINAIRE



2. DETACH LED TRAY



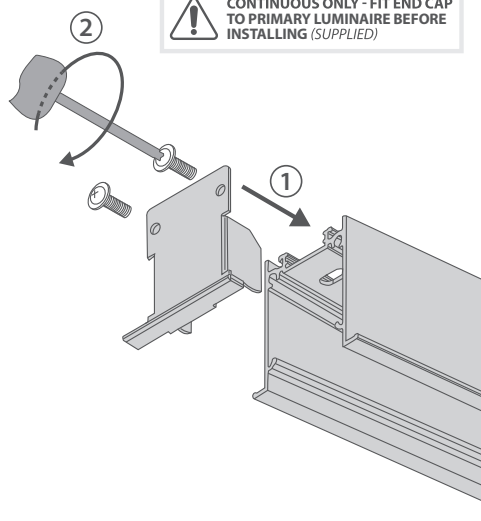
LIGHT ENGINE IS HELD IN PLACE BY MAGNETS



3. EN CAP



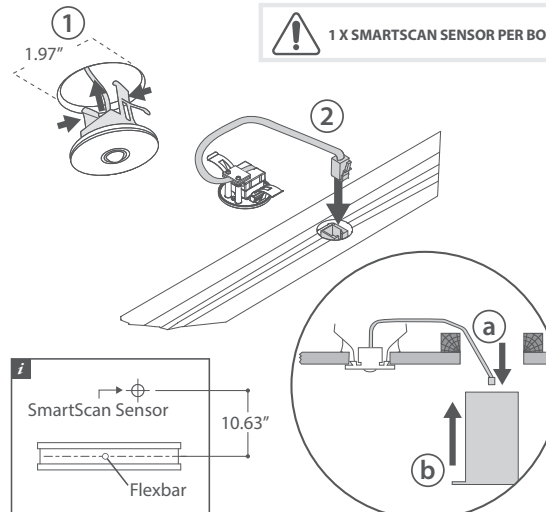
CONTINUOUS ONLY - FIT END CAP TO PRIMARY LUMINAIRE BEFORE INSTALLING (SUPPLIED)



4. SMARTSCAN SENSOR - SMARTSCAN ONLY



1 X SMARTSCAN SENSOR PER BODY

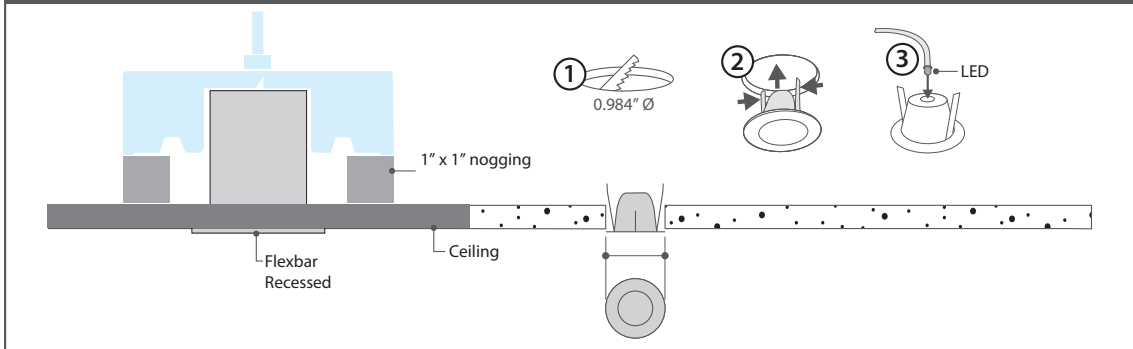


FLEXBAR CONTINUOUS

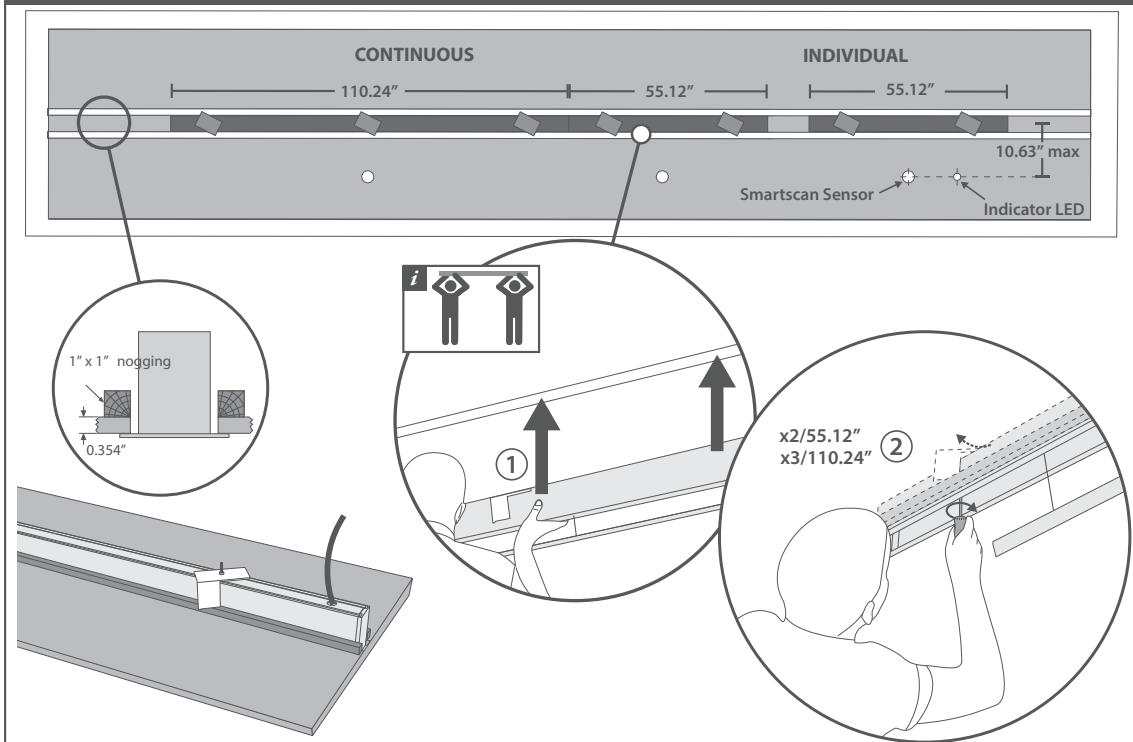
8W, 14W, 20W, 31W(55.12" I- SECONDARY STRAIGHT)
16W, 27W, 39W, 63W(110.24" I- PRIMARY OR SECOND)

installation instructions

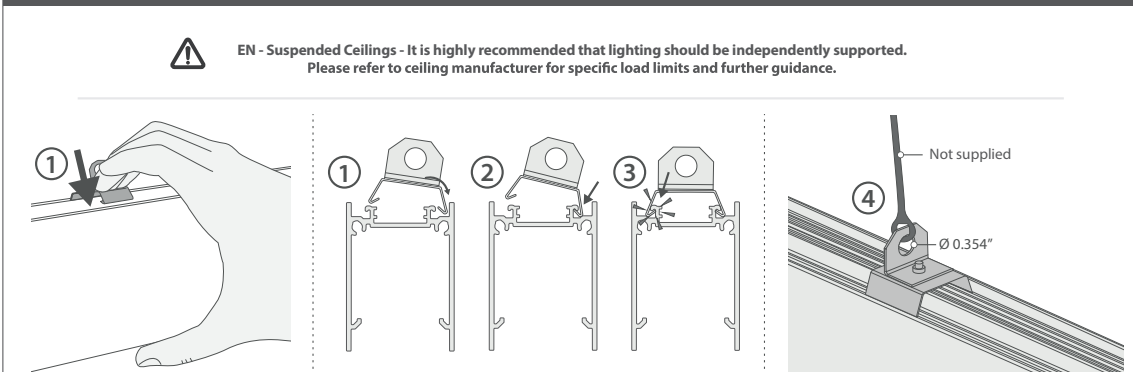
5. INDICATOR LED - EMERGENCY ONLY



6a. RECESS MOUNTING



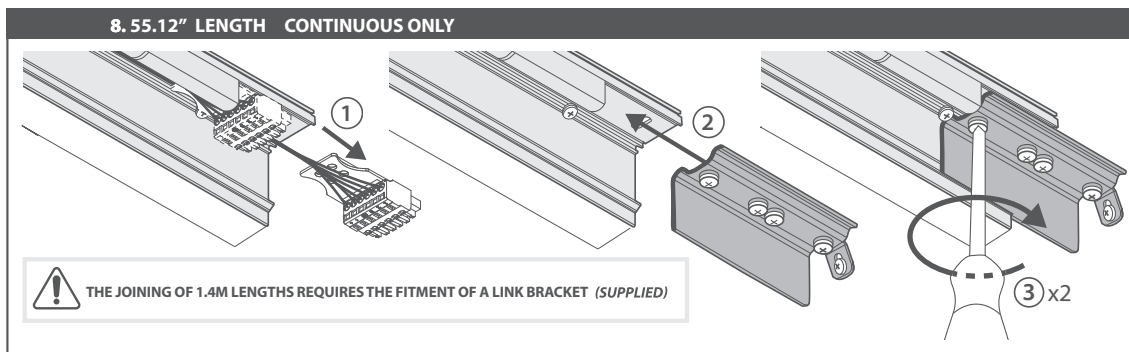
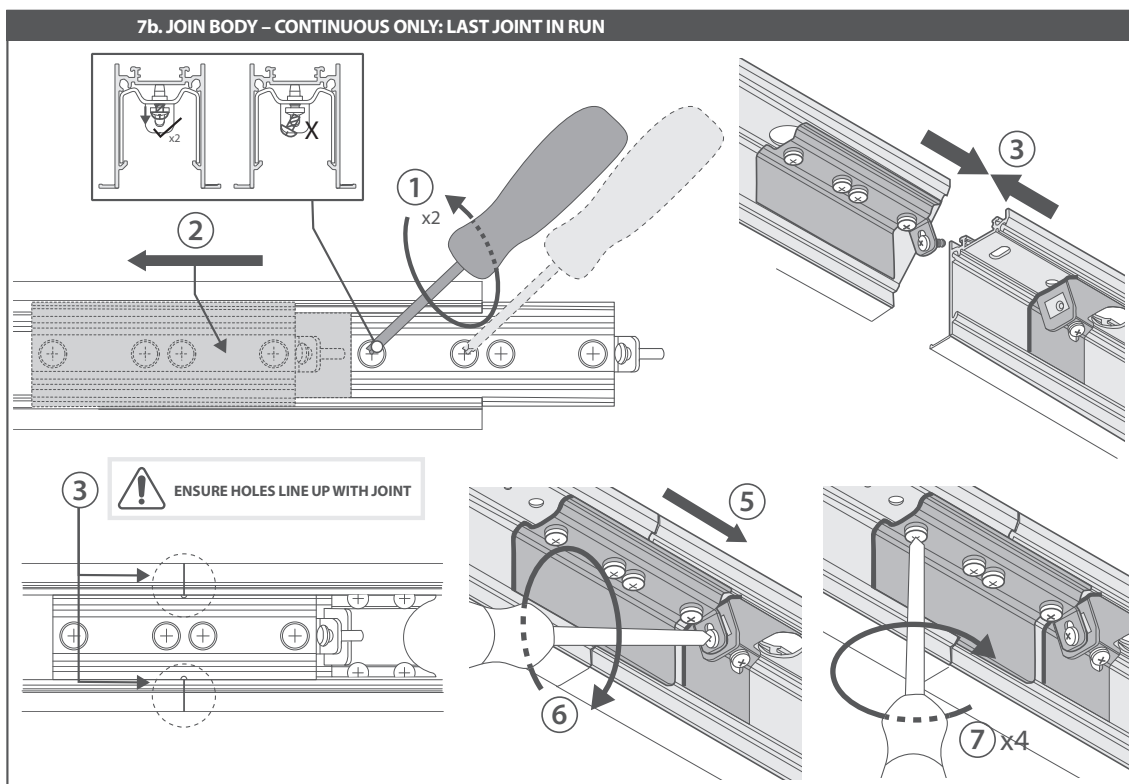
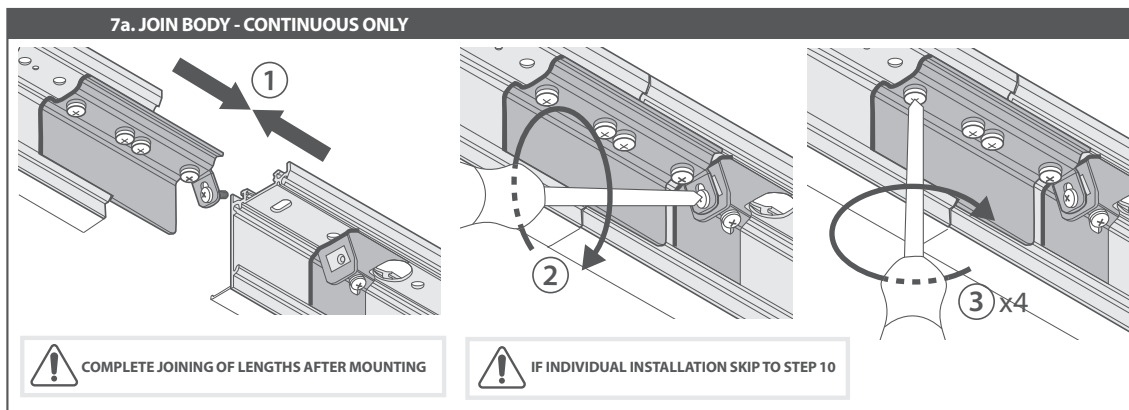
6b. TETHERING KIT



FLEXBAR CONTINUOUS

8W, 14W, 20W, 31W(55.12" I- SECONDARY STRAIGHT)
16W, 27W, 39W, 63W(110.24" I- PRIMARY OR SECOND)

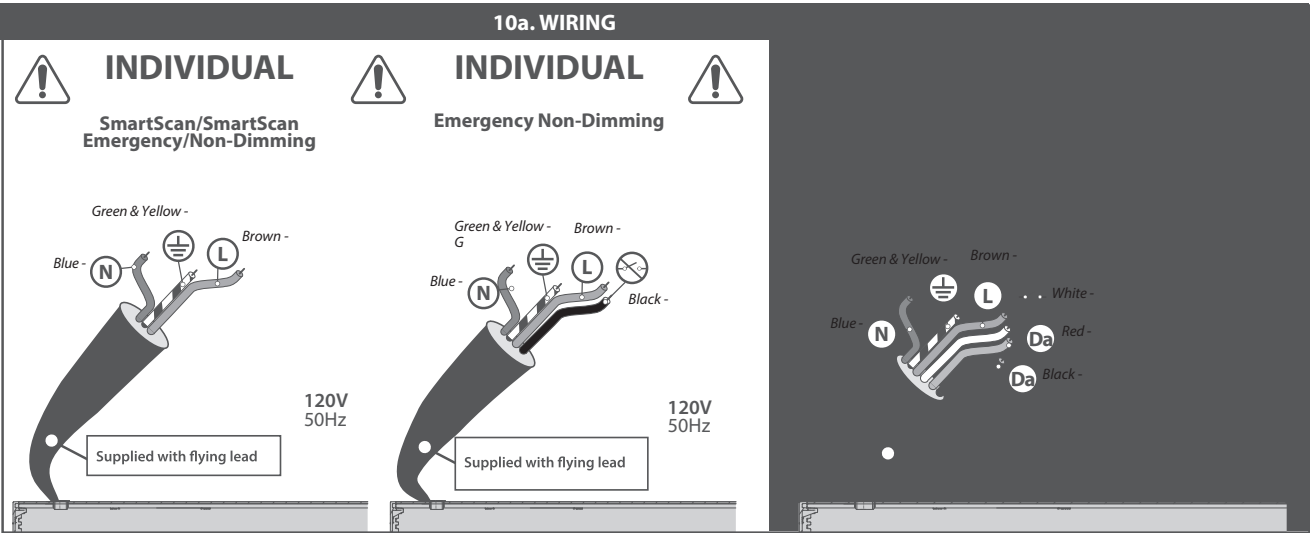
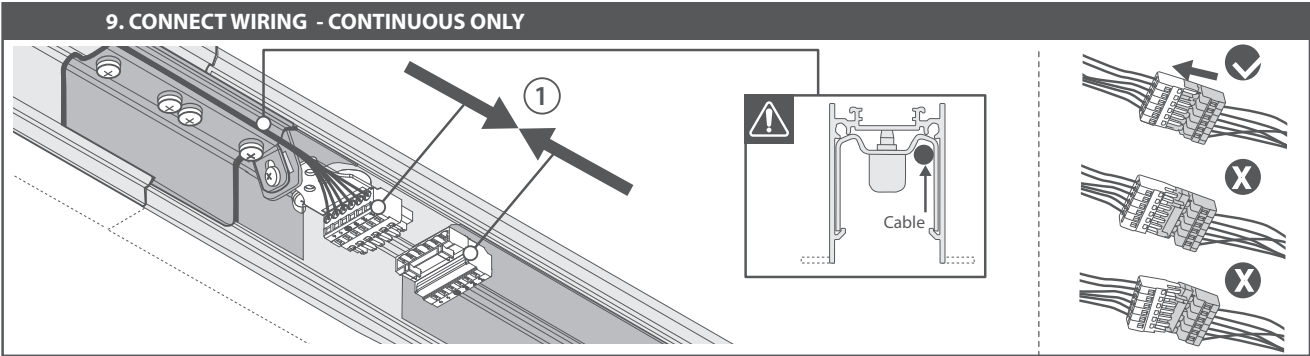
installation instructions



FLEXBAR CONTINUOUS

8W, 14W, 20W, 31W(55.12" I- SECONDARY STRAIGHT)
16W, 27W, 39W, 63W(110.24" I- PRIMARY OR SECOND)

installation instructions



10b. IMPORTANT INFORMATION

- Maximum weight per suspension = **10kg**. Ensure ceiling can accommodate this weight.
- Maximum continuous system current = **2A**.
- Primary luminaires have a 2A fuse. If replaced ensure 2A is used.
- Powered circuit must not exceed 472.44".

10c. WIRING INFORMATION

Function	Core
1 Switched live	Brown
2 Perm/Em/SmartScan	White
3 Earth	Green & Yellow
5 DALI	Red
6 DALI	Black

1 = Switched live Switched live supply feeds standard, and DALI luminaires. Not used with 'SS' suffix.

2 = Perm/Em/SmartScan Permanent live connection feeds all emergency modules and SmartScan luminaires.

3 = Neutral Neutral

Earth = Erde Earth connection

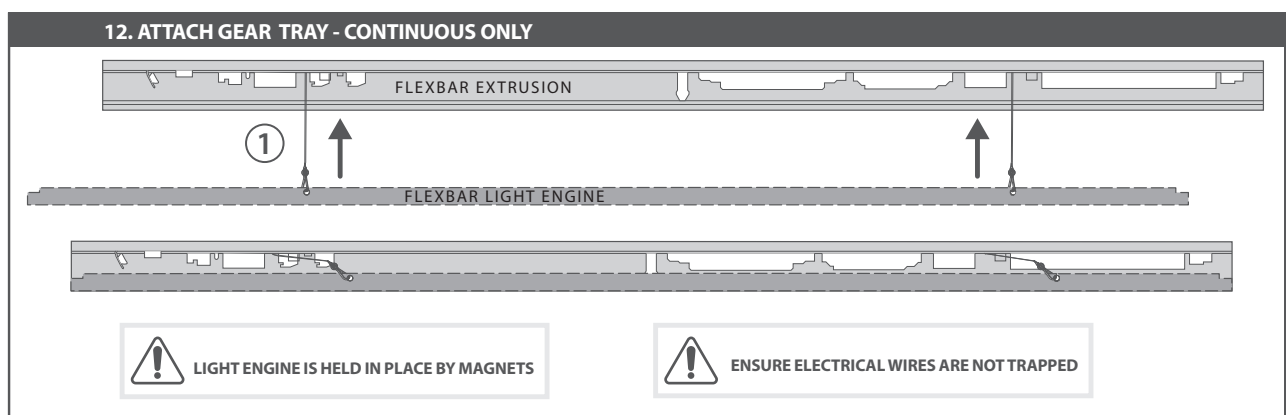
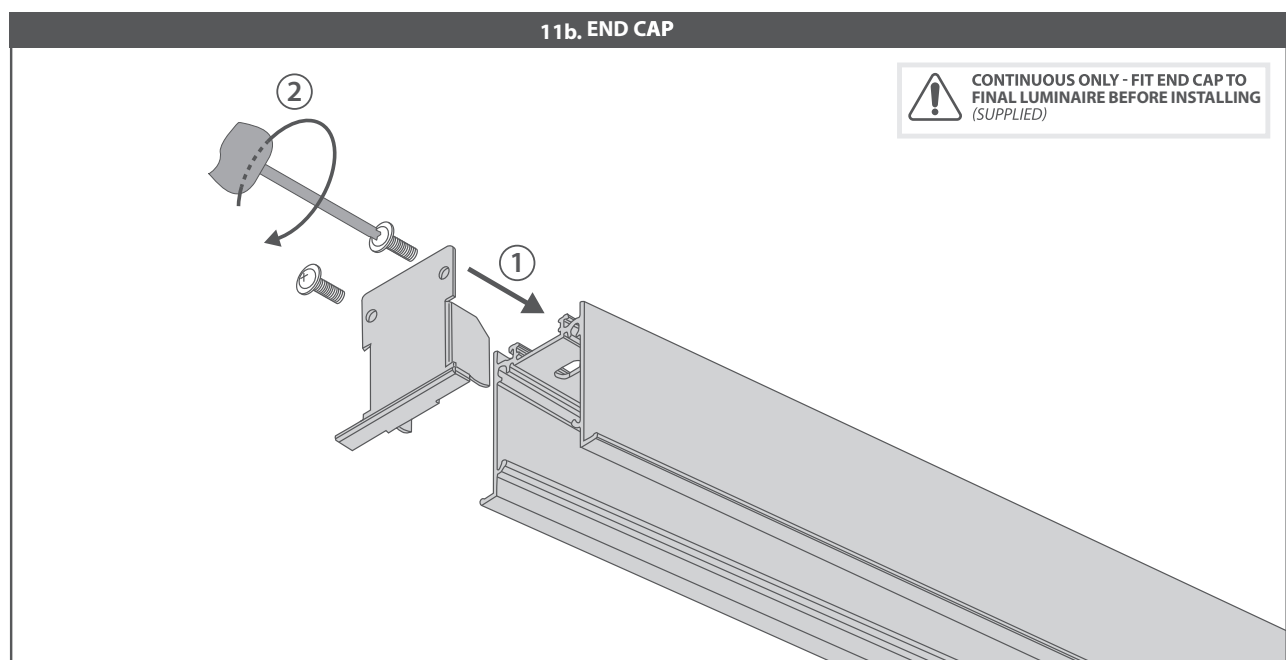
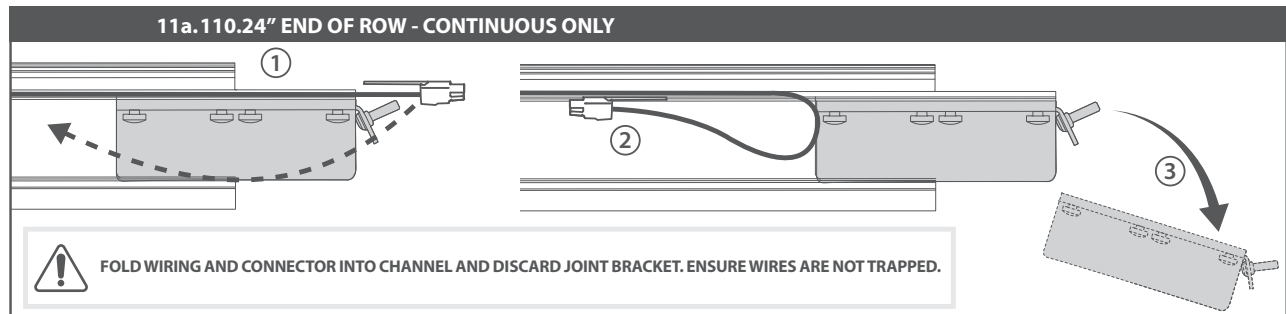
5 = DALI dimming DALI control wire
5 = DALI-Dimming

6 = DALI dimming DALI control wire
6 = DALI-Dimming

FLEXBAR CONTINUOUS

8W, 14W, 20W, 31W(55.12" I- SECONDARY STRAIGHT)
16W, 27W, 39W, 63W(110.24" I- PRIMARY OR SECOND)

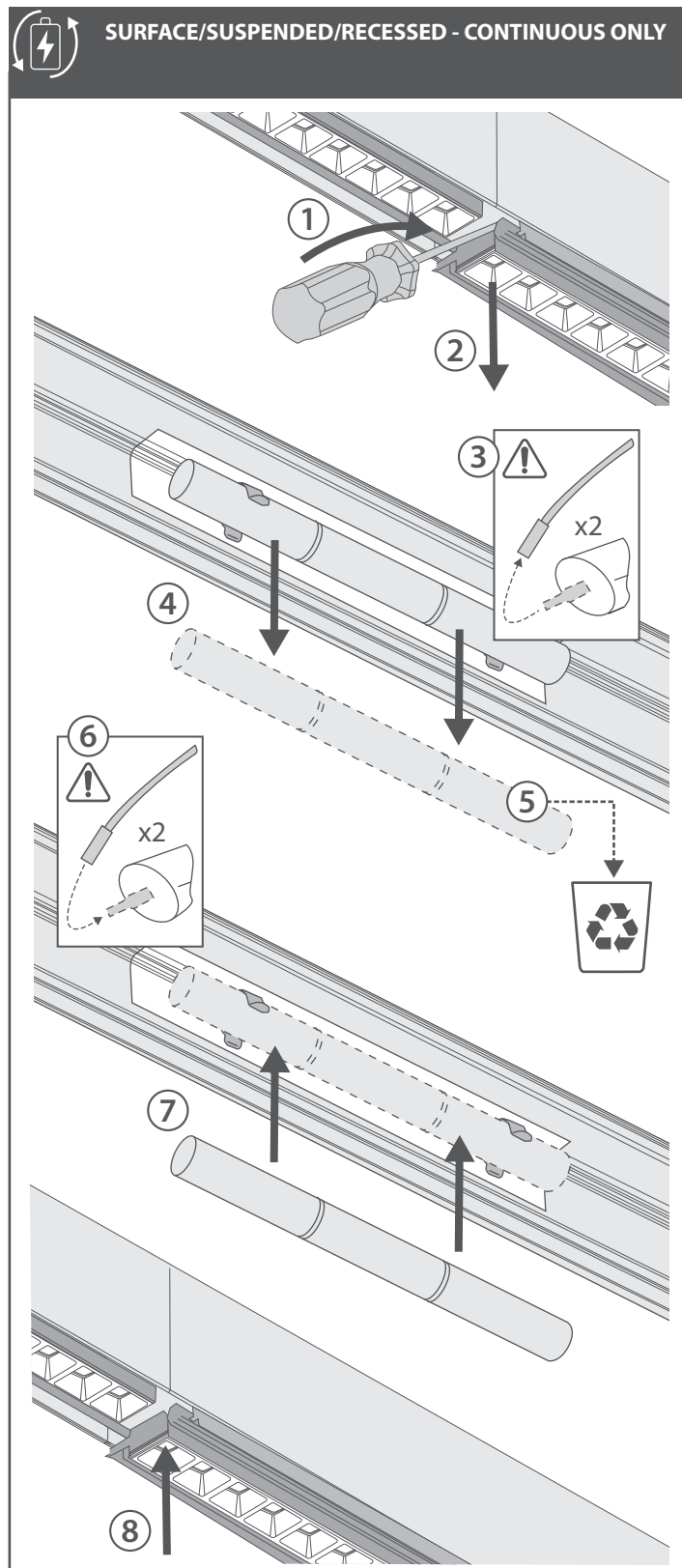
installation instructions



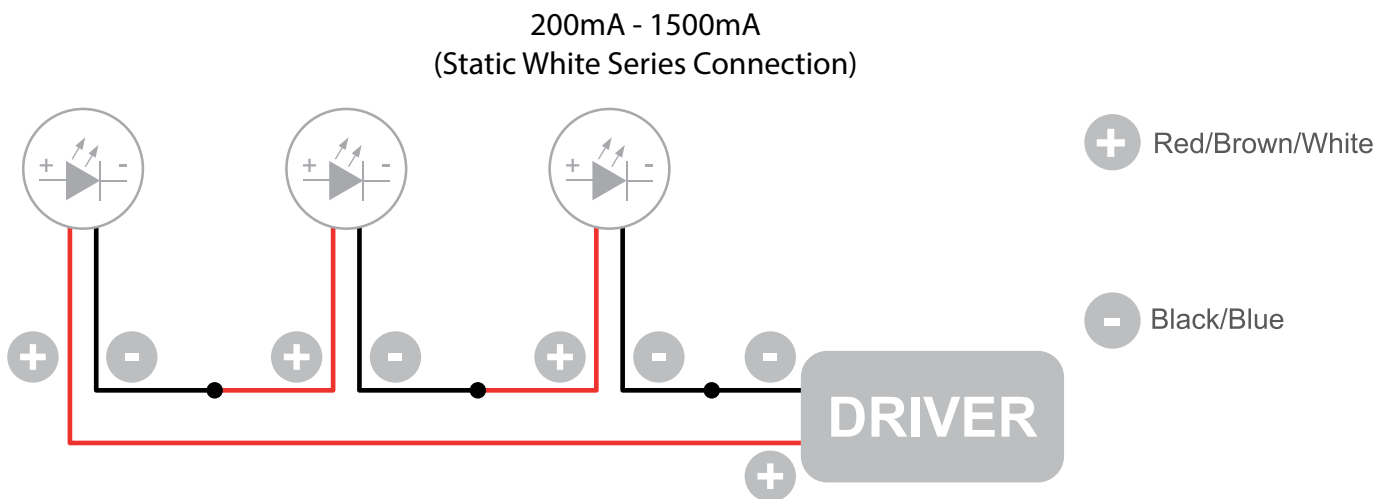
FLEXBAR CONTINUOUS

8W, 14W, 20W, 31W(55.12" I- SECONDARY STRAIGHT)
16W, 27W, 39W, 63W(110.24" I- PRIMARY OR SECOND)

installation instructions



Wiring Diagram



The individual lamps must be connected in series.
Only power up the system once all the lamps have been connected.

- LED lights work at constant current. When choosing a power supply unit, you need to consider the current by which the LEDs are driven and their maximum power consumption.
- Only power up the system once all the lamps are connected. Connecting an individual lamp to an active power supply may cause the lamp to break due to over-voltage.
- The electronic power supply is constant current, so to a certain extent it automatically compensates the voltage drop associated with cable length; however, we advise not exceeding 100 feet.
- Lamps and power supply units must be installed in well-ventilated boxes or locations to allow a natural heat diffusion and avoid the devices overheating.
- On the power system, install a surge protection device to reduce the intensity of any voltage spikes to protect the lighting fixtures from the risk of damage.
- Fixture NOT suitable for covering with thermally insulating material.