



||| Flexbar

Minimum presence. *Maximum impact.*

designplan[®] 

79 Trenton Avenue
Frenchtown, NJ 08825

Tel: (908) 996-7710
Fax: (908) 996-7042

 **Thorlux**
Lighting

Actual size



Introduction

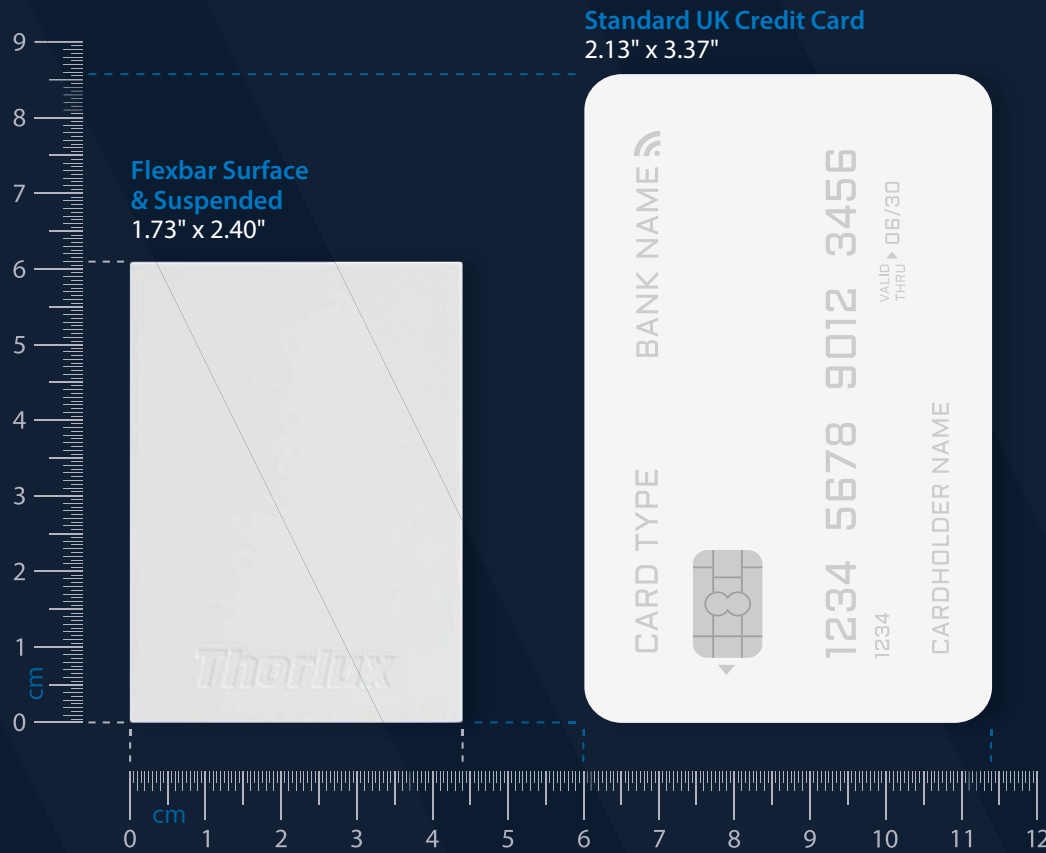
Flexbar is an elegant, linear luminaire ideal for a wide range of applications such as offices, education, leisure and retail. The high-performance lens technology provides well-controlled low glare lighting for optimum user comfort.

The versatility of Flexbar allows it to be surface mounted, suspended or recessed whilst individual, continuous and corner joints allow designers to be creative with their lighting layouts. Supreme efficiency (160.5LL/CW) and 100,000 hour life ensure Flexbar has the performance to match its elegance.

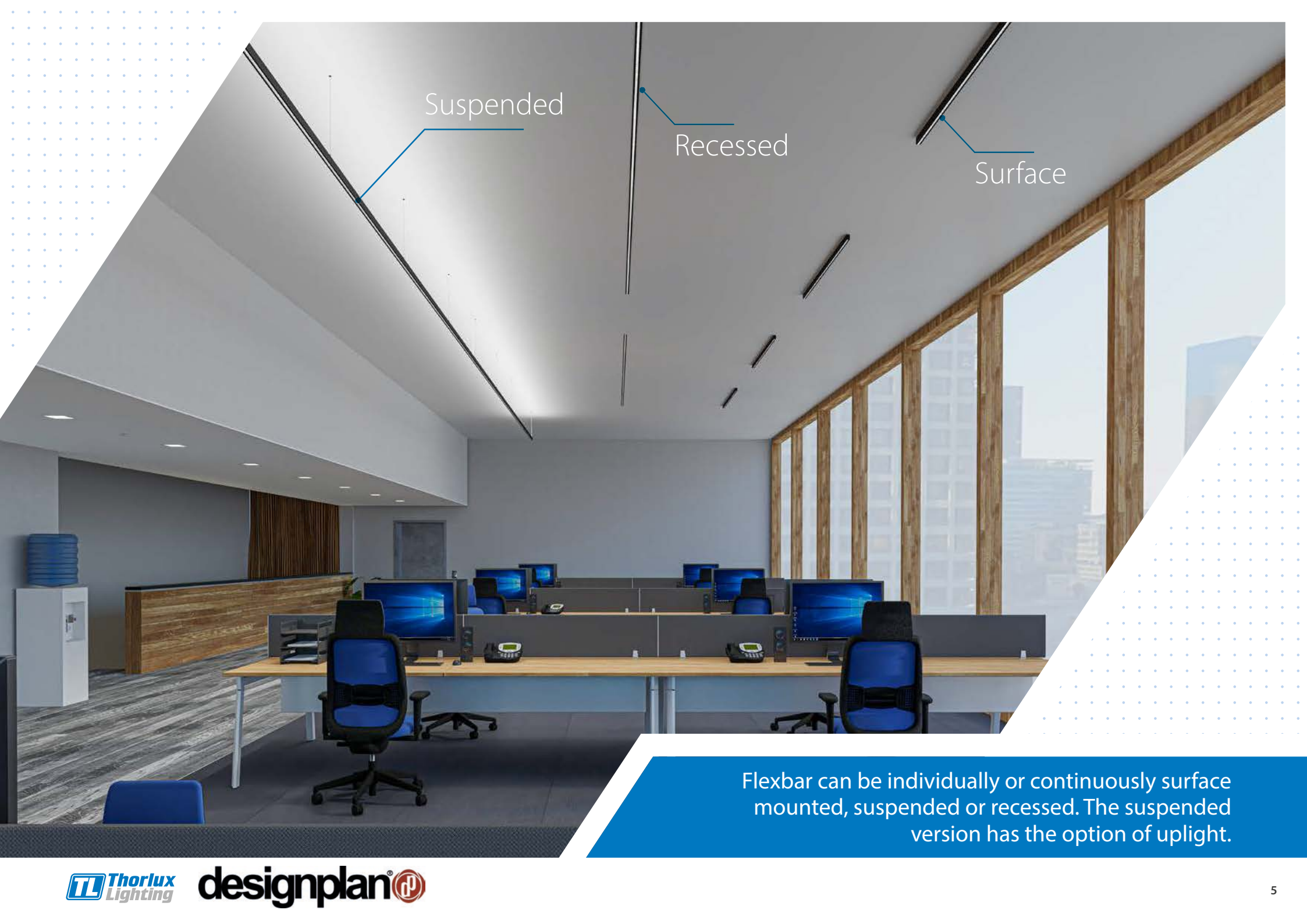


Slim, sleek & discreet

Flexbar's compact, slim design allows the luminaire to blend into the background without compromising on the features required for a complete lighting solution, including integral lighting controls and emergency lighting.



Examples shown above are to scale



Suspended

Recessed

Surface

Flexbar can be individually or continuously surface mounted, suspended or recessed. The suspended version has the option of uplight.

The choice is yours

Flexbar is available in a wide range of options giving you control over aesthetics and functionality.

4

Lumen outputs

3

Mounting options

3

Body lengths

3

Reflector options

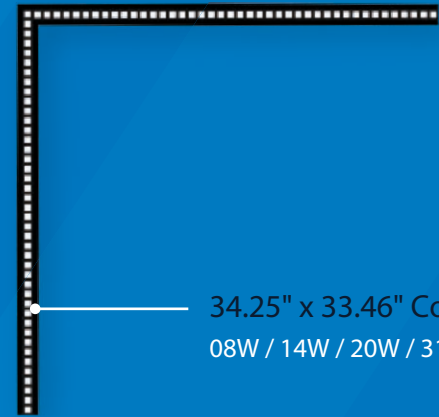
2

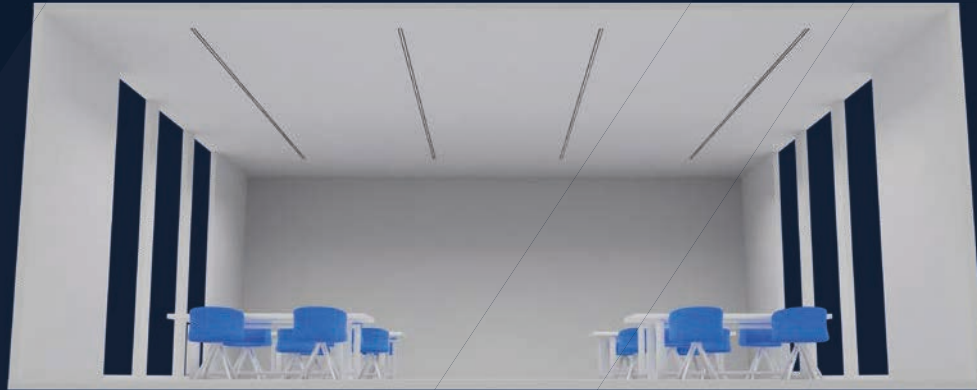
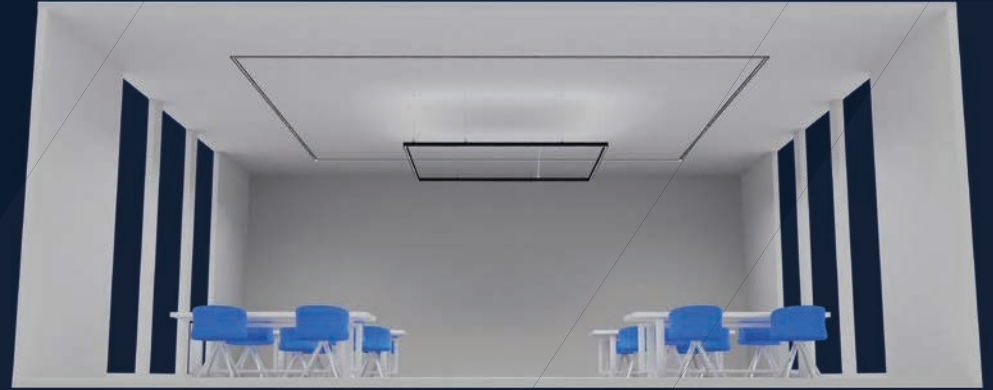
Color choices

Black body



White body





E N D L E S S
P O S S I B I L I T I E S

Take control of GLARE

Flexbar is available with a choice of three reflectors, providing distinct levels of glare control. This allows the brightness of the luminaire to be matched to the needs of the user or type of space.

Black

Ultra low glare optic with black louvre finish for the ultimate control of light. Ideal for applications where luminaire brightness is undesirable or mood/ambience is important.



Typical glare rating

UGR <10

TYPICAL APPLICATION

Breakout Spaces

Metallized

Low glare optics with metallized louvre finish for high performance and efficacy. Ideal for applications such as offices, teaching spaces or any area where glare is a concern.

White

High performance white louvre for efficiency and vibrancy. Ideal for general purpose applications where luminaire brightness is desired.



Typical glare rating

UGR <15

TYPICAL APPLICATION
Office Areas

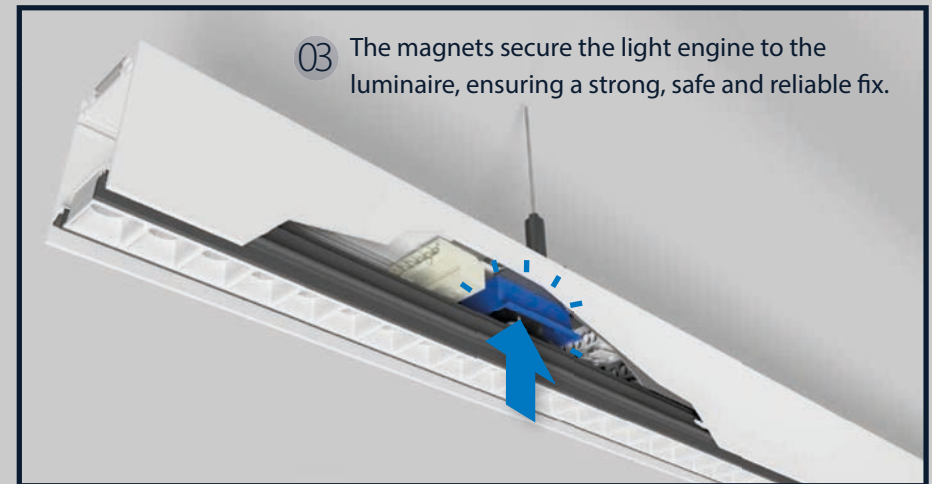
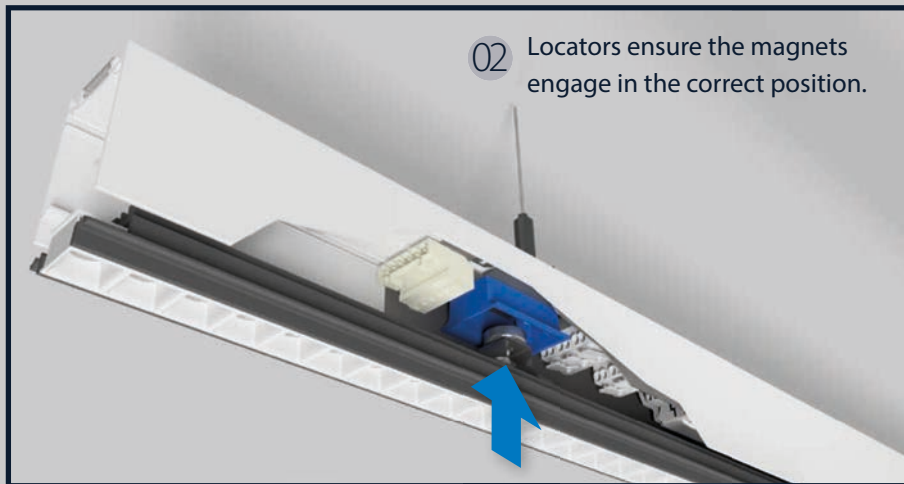
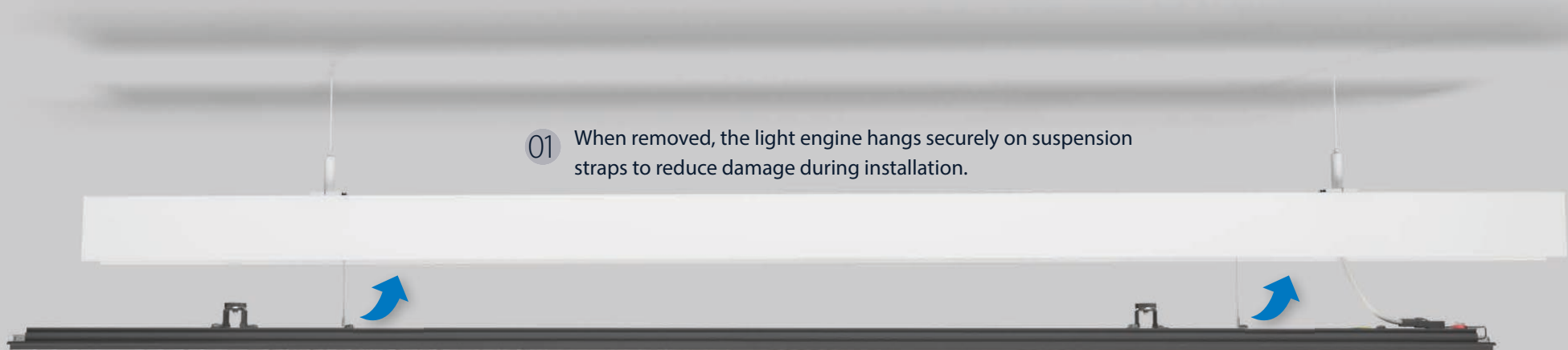
Typical glare rating

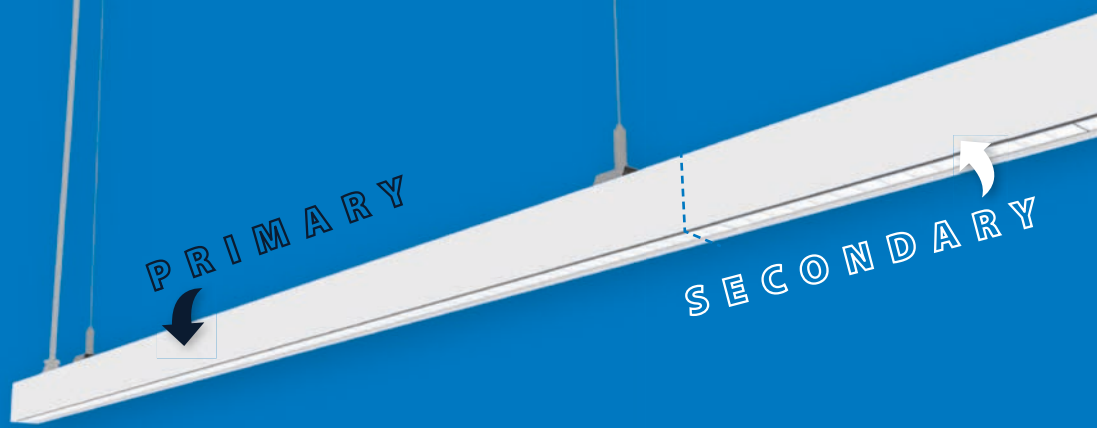
UGR <20

TYPICAL APPLICATION
Corridors

Effortless installation

Flexbar has been designed to make installation both simple and quick. The light engine is securely held in place by high-performance magnets and can be removed to access the luminaire's internal installation connections.

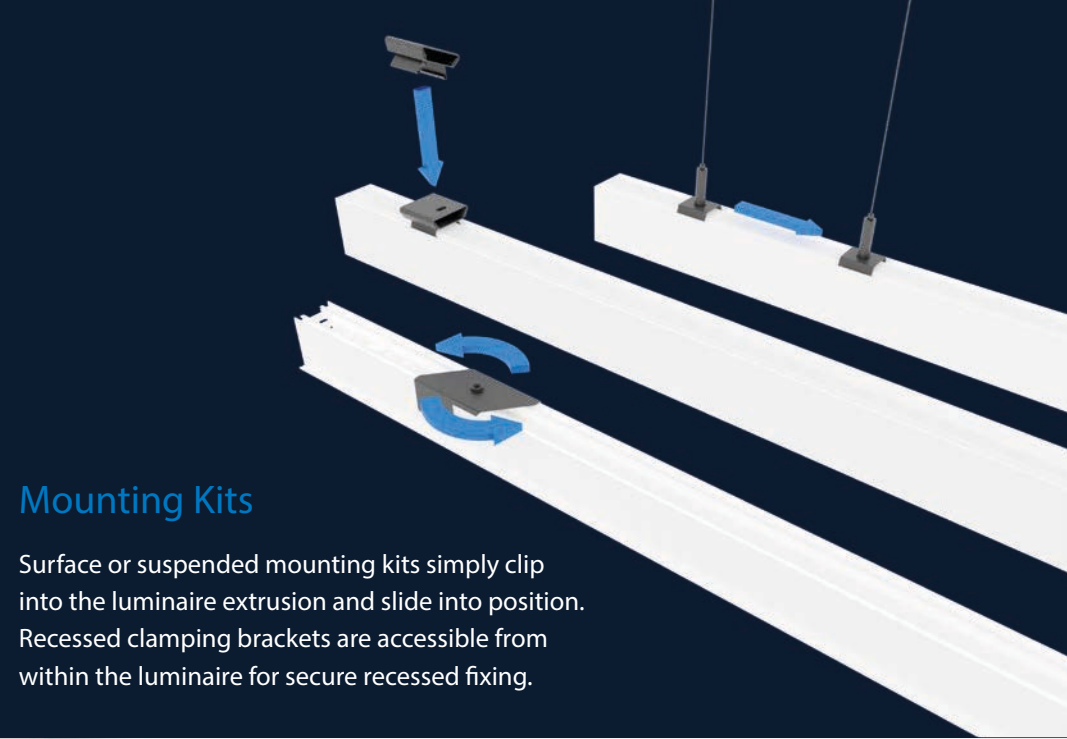




Primary and Secondary Luminaires

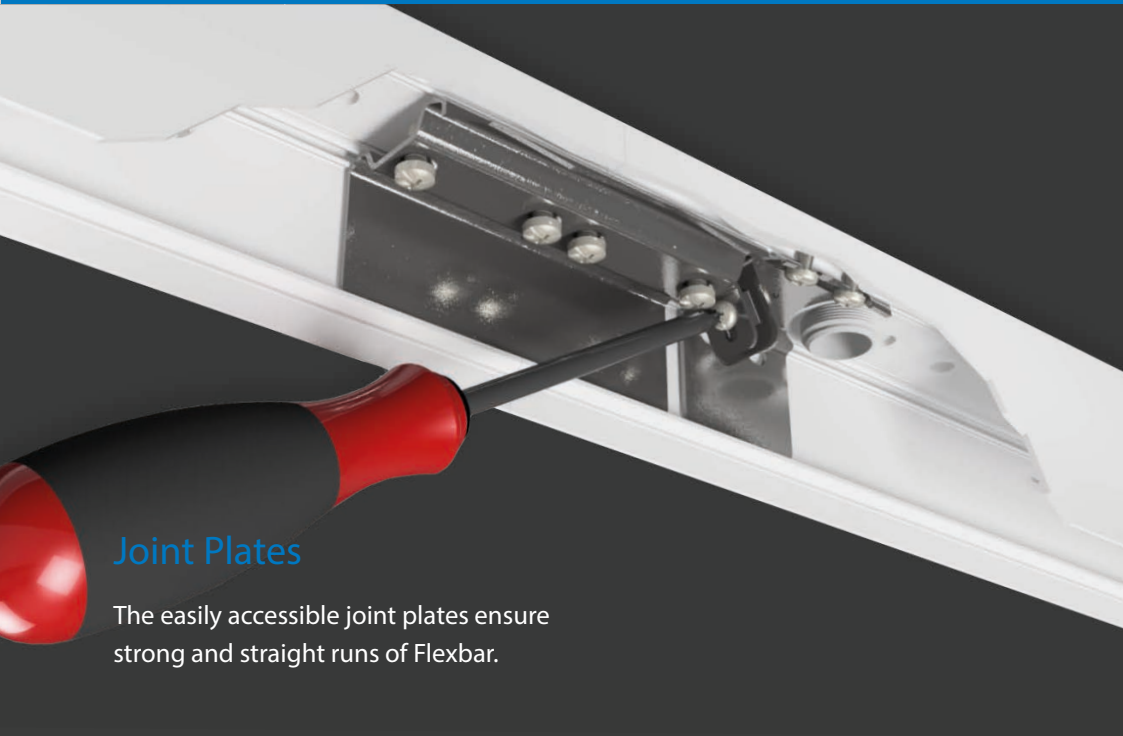
Each continuous row of Flexbar must start with a primary luminaire. The primary luminaire includes the starting connections and a fitted 9.8 ft (3m) supply lead.

Secondary luminaires simply connect using plug and play modular wiring.



Mounting Kits

Surface or suspended mounting kits simply clip into the luminaire extrusion and slide into position. Recessed clamping brackets are accessible from within the luminaire for secure recessed fixing.



Joint Plates

The easily accessible joint plates ensure strong and straight runs of Flexbar.



Plug and Play

Plug and play modular wiring makes continuous versions of Flexbar fast and easy to install.

An enhanced way of lighting

Flexbar is ideal for office environments where compliance with BS EN 12464-1 and SLL Lighting Guide 7 (LG7) is required.

The guidance provided in these documents emphasizes the need to reduce energy consumption by focusing the light on the task whilst still maintaining visual interest.

Flexbar has been designed to meet the requirements of LG7 and the British Standards by providing efficient lighting to the task area.

Low glare optics and the optional upward light component achieve high levels of user comfort.



Example lighting scheme

Best practice guidance recommends that offices should be split into different zones: the task areas, the immediate surrounding areas and the background area.

The task area in the example shown below is the desktop, the immediate surrounding area is the 19.7" border around the task area, and the background area is the rest of the floor space.

In the example shown, Flexbar has been used to meet the requirements of the British Standards and LG7. This example has been designed to the following criteria:

Task area: 46.5 fc (500 lux), 0.6 uniformity

Immediate surrounding area: 27.9 fc (300 lux), 0.4 uniformity

Background area: 9.3 fc (100 lux), 0.1 uniformity



Lighting performance

Average Task Area 48.2 fc (519 lux), 0.640 uniformity

Average Surrounding Area 28.0 fc (301 lux), 0.559 uniformity

Background Area 14.3 fc (154 lux), 0.425 uniformity

Unified Glare Rating UGR <10



What was used?

Each row of Flexbar has used:

Qty 1 - FR27LPUMS
27W Flexbar, 9.19 ft primary, with upright, metallized reflector and SmartScan control gear

Qty 1 - FR27LSUMS
27W Flexbar, 9.19 ft secondary, with upright, metallized reflector and SmartScan control gear

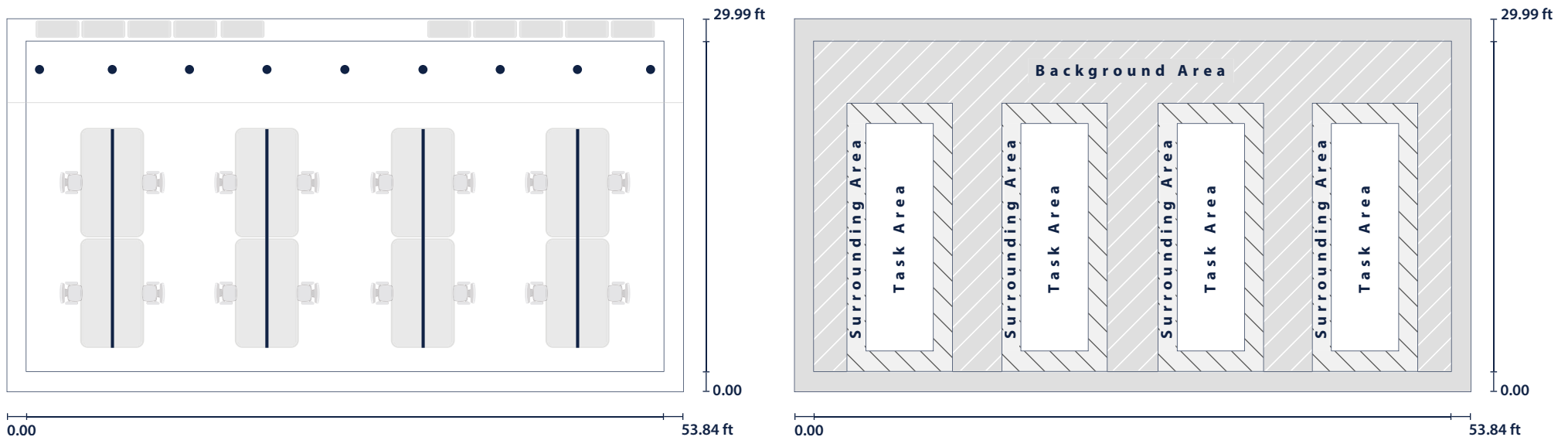
Qty 3 - IK20182
Wire suspension kit (9.84 ft)



Information

The Flexbar has been suspended at 8.53 ft in an office with a ceiling height of 10.50 ft.

Flexbar uses the metallized reflector to achieve a UGR of <10.



A long term solution with a sustainable future

High quality and longevity have always been at the heart of Thorlux products, and Flexbar is no exception.

Designed with sustainability in mind, the construction of Flexbar uses the minimum number of materials whilst still delivering the superb efficiency and long life required in commercial applications.





Minimized Material Usage

Flexbar has a compact body design which still retains the performance of a typically much larger luminaire, thus reducing the quantity of LEDs, components and other materials required.



Efficient Light Distribution

High performance optics place light on the task in a controlled and efficient manner. Light distribution for versions with uplight is split 20%/80% with the majority of light still focused down to the task.



Less power, more light

Flexbar is highly efficient, at 160LL/CW, reducing power consumption whilst providing more light.



Recyclable at End of Life

Flexbar has been designed to achieve a long and reliable lifetime and be easily serviced. However once end of life is reached, Flexbar luminaires can be fully disassembled for easy recycling, minimizing the impact on the environment.



Easy Serviceability

All components are replaceable on site. Flexbar has been designed to allow upgrade or rectification of problems with the light engine, driver and other components, extending the lifetime of the product.



Certified to ISO 14001

Thorlux has ISO 14001:2015 certification - the international standard for environmental management, which supports organisations in reducing their environmental impact.



Solar Photovoltaic Installation

In 2019, Thorlux installed solar photovoltaic units on the roof of the manufacturing facility. The system is estimated to produce 224,470kWh of electricity per year, helping to power the plant and equipment as well as charging the company's fleet of hybrid and fully electric vehicles.

Thorlux Carbon Offsetting Scheme

What can you do to help?



Devauden, Monmouthshire



Devauden, Monmouthshire

Thorlux Lighting is committed to minimizing the environmental impact of both its manufacturing processes and its products.

In 2009 Thorlux started planting trees in an ambitious carbon-offsetting scheme to help compensate for the carbon dioxide (CO₂) emissions released into the atmosphere as an indirect result of its factory and selling activities.

The scheme is open to all our customers who want to offset their carbon footprint.

Further information on the scheme, how the sites are managed and how you can get involved can be found at www.thorlux.co.uk/carbon-offsetting



Recessed Individual

SLIMLINE, LOW GLARE
LINEAR LUMINAIRES



SPECIFICATION

- Extruded aluminum body and light engine
- White (RAL9016) or black (RAL9005) finishes available
- Custom optical system combining a reflector and optical lens for each LED
- Magnetic clip-in light engine
- Supplied fitted with 6.56 ft supply lead and adjustable recessing ceiling brackets
- Black 'invisible' light source, metallized low glare and white reflector options
- Low glare optics for EN12464-1 / LG7 (<math><1500\text{cd/m}^2 @ 65^\circ</math>) when using the metallized or black reflector
- Fitted with 4000K LEDs

LED CHARACTERISTICS

CRI	80
COLOR TEMPERATURE	4000K
RATED LIFE (HOURS)	100K - L80/B10
PROTECTION	LUX GUARD
DRIVER EFFICIENCY	>81%
REPLACEABLE	YES
POWER FACTOR	>0.9

LL/CW 160.5

WEIGHTS

VERSION	APPROX. lbs
55.12"	9.26 lbs
110.24"	16.76 lbs

LUMINAIRE CONFIGURATOR

TYPE	PRODUCT CODE	WATTAGE	LENGTH	VARIANT	REFLECTOR
55.12" Individual	FXR Flexbar Recessed	08 08W	M 55.12"	V Individual	W White
		14 14W			M Metallized
		20 20W			B Black
		31 31W			
110.24" Individual	FXR Flexbar Recessed	16 16W	L 110.24"	V Individual	W White
		27 27W			M Metallized
		39 39W			B Black
		63 63W			

E.g. FXR08MVMS

FXR Flexbar Recessed **08** 08W **M** 55.12" **V** Individual **M** Metallized

Note: White body as standard. For black body versions, suffix catalogue number with **B6**.



Technical information and finishing components from page 26.

Suspended/Surface Individual

SLIMLINE, LOW GLARE LINEAR LUMINAIRES



SPECIFICATION

- Extruded aluminum body and light engine
- White (RAL9016) or black (RAL9005) finishes available
- Custom optical system combining a reflector and optical lens for each LED
- Magnetic clip-in light engine
- Versions with optional uplight
- Supplied with easily adjustable 11.48 ft wire suspensions and surface mounting kit, and fitted with 9.84 ft supply lead
- Black 'invisible' light source, metallized low glare and white reflector options
- Low glare optics for EN12464-1 / LG7 (<math><1500\text{cd/m}^2 @ 65^\circ</math>) when using the metallized or black reflector
- Fitted with 4000K LEDs

LED CHARACTERISTICS

CRI	80
COLOR TEMPERATURE	4000K
RATED LIFE (HOURS)	100K - L80/B10
PROTECTION	LUX GUARD
DRIVER EFFICIENCY	>81%
REPLACEABLE	YES
POWER FACTOR	>0.9
LL/CW	160.5

WEIGHTS

VERSION	APPROX. lbs
55.12"	7.72 lbs ●
110.24"	14.77 lbs ▲

UPLIGHT

Add ● 0.44 lbs or ▲ 0.88 lbs to weight.

LUMINAIRE CONFIGURATOR

TYPE	PRODUCT CODE	WATTAGE	LENGTH	VARIANT	UPLIGHT	REFLECTOR
55.12" Individual						
	FR Flexbar	08 08W 14 14W 20 20W 31 31W	M 55.12"	V Individual	X No uplight U Uplight	W White M Metallized B Black
110.24" Individual						
	FR Flexbar	16 16W 27 27W 39 39W 63 63W	L 110.24"	V Individual	X No uplight U Uplight	W White M Metallized B Black



Technical information from page 26.

E.g. FR08MVUMS

FR Flexbar	08 08W	M 55.12"	V Individual	U Uplight	M Metallized
-------------------	---------------	-----------------	---------------------	------------------	---------------------

Note: White body as standard. For black body versions, suffix catalogue number with **B6**.

Recessed Continuous

SLIMLINE, LOW GLARE
LINEAR LUMINAIRES



SPECIFICATION

- Extruded aluminum body and light engine
- White (RAL9016) or black (RAL9005) finishes available
- Custom optical system combining a reflector and optical lens for each LED
- Integral through wiring system with plug and socket connectors
- Magnetic clip-in light engine
- Supplied with adjustable recessing ceiling brackets
- Primary luminaire supplied with end kit and fitted with 6.56 ft supply lead
- Black 'invisible' light source, metallized low glare or white reflector options
- Low glare optics for EN12464-1 / LG7 (<math><1500\text{cd}/\text{m}^2 @ 65^\circ</math>) when using the metallized or black reflector
- Fitted with 4000K LEDs

LED CHARACTERISTICS

CRI	80
COLOR TEMPERATURE	4000K
RATED LIFE (HOURS)	100K - L80/B10
PROTECTION	LUX GUARD
DRIVER EFFICIENCY	>81%
REPLACEABLE	YES
POWER FACTOR	>0.9

LL/CW **160.5**

Technical information and finishing components from page 26.

WEIGHTS

VERSION	APPROX. lbs
55.12"	9.70 lbs
110.24"	17.20 lbs

LUMINAIRE CONFIGURATOR

	TYPE	PRODUCT CODE	WATTAGE	LENGTH	VARIANT	REFLECTOR
Primary Straight	110.24" Continuous					
		FXR Flexbar Recessed	16 16W 27 27W 39 39W 63 63W	L 110.24"	P Primary	W White M Metallized B Black
	55.12" Continuous					
		FXR Flexbar Recessed	08 08W 14 14W 20 20W 31 31W	M 55.12"	S Secondary	W White M Metallized B Black
	Secondary Straight	110.24" Continuous				
		FXR Flexbar Recessed	16 16W 27 27W 39 39W 63 63W	L 110.24"	S Secondary	W White M Metallized B Black

E.g. FXR16LPWS

FXR Flexbar Recessed **16** 16W **L** 110.24" **P** Primary **W** White

Note: White body as standard. For black body versions, suffix catalogue number with **B6**.

SLIMLINE, LOW GLARE LINEAR LUMINAIRES



SPECIFICATION

- Extruded aluminum body and light engine
- White (RAL9016) or black (RAL9005) finishes available
- Custom optical system combining a reflector and optical lens for each LED
- Integral through wiring system with plug and socket connectors
- Magnetic clip-in light engine
- Versions with optional uplight
- Suitable for wire suspending or surface mounting (see finishing components on page 27)
- Primary luminaire supplied with end kit and fitted with 9.84 ft supply lead
- Black 'invisible' light source, metallized low glare and white reflector options
- Low glare optics for EN12464-1 / LG7 (<math><1500\text{cd}/\text{m}^2 @ 65^\circ</math>) when using the metallized or black reflector
- Fitted with 4000K LEDs

LED CHARACTERISTICS

CRI	80
COLOR TEMPERATURE	4000K
RATED LIFE (HOURS)	100K - L80/B10
PROTECTION	LUX GUARD
DRIVER EFFICIENCY	>81%
REPLACEABLE	YES
POWER FACTOR	>0.9

LL/CW **160.5**

Technical information and finishing components from page 26.

WEIGHTS

VERSION	APPROX. lbs
55.12"	7.72 lbs ●
110.24"	14.77 lbs ▲

UPLIGHT

Add ● 0.44 lbs or ▲ 0.88 lbs to weight.

LUMINAIRE CONFIGURATOR

	TYPE	PRODUCT CODE	WATTAGE	LENGTH	VARIANT	UPLIGHT	REFLECTOR
Primary Straight	110.24" Continuous	FR Flexbar	16 16W	L 110.24"	P Primary	X No uplight	W White
			27 27W			U Uplight	M Metallized
			39 39W				B Black
			63 63W				
Secondary Straight	55.12" Continuous*	FR Flexbar	08 08W	M 55.12"	S Secondary	X No uplight	W White
			14 14W			U Uplight	M Metallized
			20 20W				B Black
			31 31W				
Secondary Straight	110.24" Continuous	FR Flexbar	16 16W	L 110.24"	S Secondary	X No uplight	W White
			27 27W			U Uplight	M Metallized
			39 39W				B Black
			63 63W				
E.g. FR16LPXWS	FR Flexbar	16 16W	L 110.24"	P Primary	X No uplight	W White	

Note: White body as standard. For black body versions, suffix catalogue number with B6.

Suspended/Surface Continuous

Recessed Corner Joints

SLIMLINE, LOW GLARE
LINEAR LUMINAIRES



SPECIFICATION

- Extruded aluminum body and light engine
- White (RAL9016) or black (RAL9005) finishes available
- Custom optical system combining a reflector and optical lens for each LED
- Integral through wiring system with plug and socket connectors
- Magnetic clip-in light engine
- Supplied with adjustable recessing ceiling brackets
- Primary luminaire supplied with end kit and fitted with 6.56 ft supply lead
- Black 'invisible' light source, metallized low glare or white reflector options
- Low glare optics for EN12464-1 / LG7 (<1500cd/m² @ 65°) when using the metallized or black reflector
- Fitted with 4000K LEDs

LED CHARACTERISTICS

CRI	80
COLOR TEMPERATURE	4000K
RATED LIFE (HOURS)	100K - L80/B10
PROTECTION	LUX GUARD
DRIVER EFFICIENCY	>81%
REPLACEABLE	YES
POWER FACTOR	>0.9

LL/CW 160.5

WEIGHTS

VERSION	APPROX. lbs
CORNER	10.36 lbs

LUMINAIRE CONFIGURATOR

PRODUCT CODE	WATTAGE	LENGTH	VARIANT	REFLECTOR
Primary Corner				
FXR Flexbar Recessed	08 08W 14 14W 20 20W 31 31W	C 33.46" x 34.25"	PL Primary left corner PR Primary right corner	W White M Metallized B Black
Secondary Corner				
FXR Flexbar Recessed	08 08W 14 14W 20 20W 31 31W	C 33.46" x 34.25"	SL Secondary left corner SR Secondary right corner	W White M Metallized B Black

E.g. FXR08CPLWS

FXR Flexbar Recessed **08** 08W **C** 33.46" x 34.25" **PL** Primary left corner **W** White

Note: White body as standard. For black body versions, suffix catalogue number with **B6**. Note: Corners not available with emergency version.

Suspended/Surface Corner Joints

SLIMLINE, LOW GLARE
LINEAR LUMINAIRES



SPECIFICATION

- Extruded aluminum body and light engine
- White (RAL9016) or black (RAL9005) finishes available
- Custom optical system combining a reflector and optical lens for each LED
- Integral through wiring system with plug and socket connectors
- Magnetic clip-in light engine
- Versions with optional uplight
- Suitable for wire suspending or surface mounting (see finishing components on page 27)
- Primary luminaire supplied with end kit and fitted with 9.84 ft supply lead
- Black 'invisible' light source, metallized low glare and white reflector options
- Low glare optics for EN12464-1 / LG7 (<math><1500\text{cd}/\text{m}^2 @ 65^\circ</math>) when using the metallized or black reflector
- Fitted with 4000K LEDs

LED CHARACTERISTICS

CRI	80
COLOR TEMPERATURE	4000K
RATED LIFE (HOURS)	100K - L80/B10
PROTECTION	LUX GUARD
DRIVER EFFICIENCY	>81%
REPLACEABLE	YES
POWER FACTOR	>0.9
LL/CW	160.5

WEIGHTS

VERSION	APPROX. lbs
CORNER	8.82 lbs

LUMINAIRE CONFIGURATOR

PRODUCT CODE	WATTAGE	LENGTH	VARIANT	UPLIGHT	REFLECTOR
Primary Corner					
FR Flexbar	08 08W	C 33.46"x 34.25"	PL Primary left corner	X No uplight	W White
	14 14W		PR Primary right corner	U Uplight	M Metallized
	20 20W				B Black
	31 31W				
Secondary Corner					
FR Flexbar	08 08W	C 33.46"x 34.25"	SL Secondary left corner	X No uplight	W White
	14 14W		SR Secondary right corner	U Uplight	M Metallized
	20 20W				B Black
	31 31W				

E.g. FR08CPLXWS

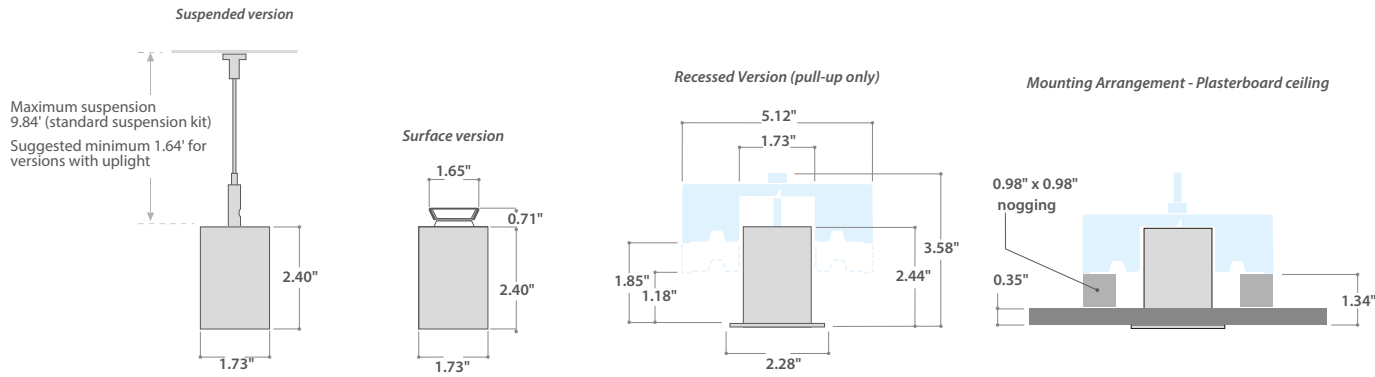
FR Flexbar	08 08W	C 33.46"x 34.25"	PL Primary left corner	X No uplight	W White
-------------------	---------------	-------------------------	-------------------------------	---------------------	----------------

Note: White body as standard. For black body versions, suffix catalogue number with **B6**. Note: Corners not available with emergency version.



Technical information and finishing components from page 26.

DIMENSIONS

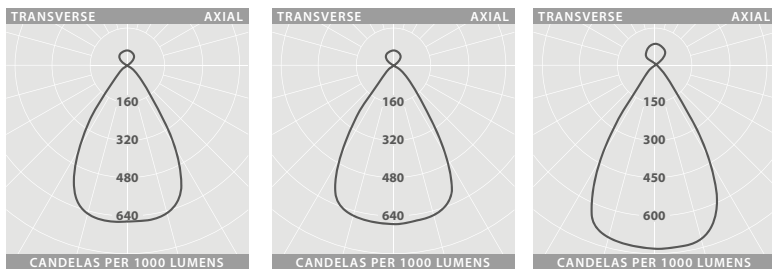
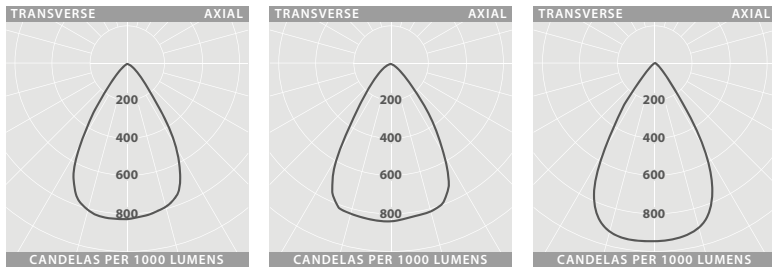


FINISHING COMPONENTS

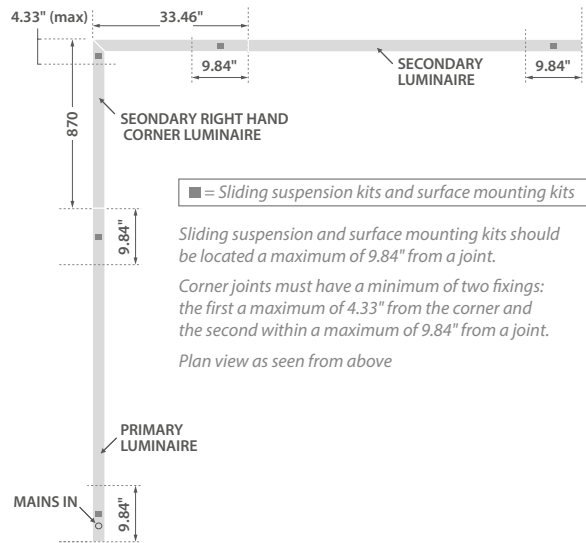
DESCRIPTION	CAT. No.	APPROX. lbs
Wire suspension kit (9.84 ft length)*	IK 20181	0.11 lbs
Surface mounting kit*	IK 20182	0.09 lbs
Recessed tethering kit	IK 20274	0.02 lbs
Surface wiring tidy - white	LL13361W12	0.88 lbs
Surface wiring tidy - black	LL13361B6	0.88 lbs

* See fixing location graphics above for required quantities.

PHOTOMETRIC GUIDE



SUSPENDED AND SURFACE MOUNTED CORNER JOINT FIXING LOCATIONS

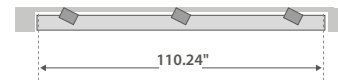


SUSPENDED AND SURFACE MOUNTED INDIVIDUAL LUMINAIRE FIXING LOCATIONS



Sliding suspension kits and surface mounting kits should be located a maximum of 9.84" from either end.

RECESSED MOUNTED INDIVIDUAL LUMINAIRE FIXING LOCATIONS



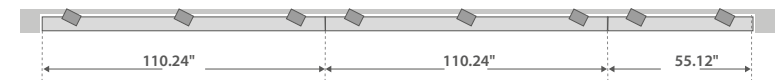
Individual recessed version cut-out size: $110.24" + 0.24"* = 110.47" \times 1.89"$

SUSPENDED AND SURFACE MOUNTED CONTINUOUS LUMINAIRE FIXING LOCATIONS



Sliding suspension kits and surface mounting kits should be located a maximum of 9.84" either side of joints or from ends.

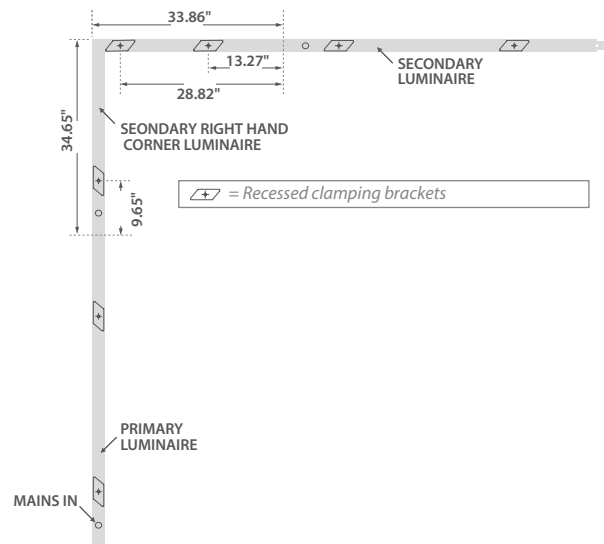
RECESSED MOUNTED CONTINUOUS LUMINAIRE FIXING LOCATIONS



Continuous recessed version cut-out size: $110.24" + 110.24" + 55.12" + 0.24"* = 275.83" \times 1.89"$

* = 2 x End Caps

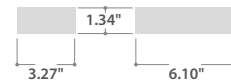
RECESSED CORNER JOINT FIXING LOCATIONS



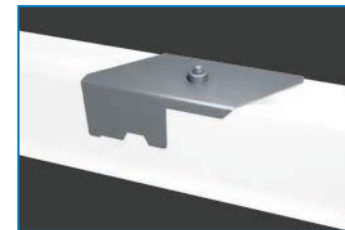
WIRING TIDY



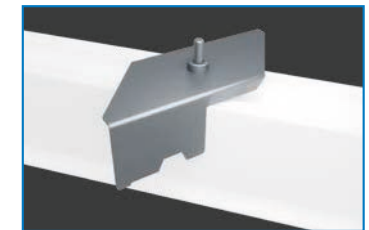
Suitable for use with suspended versions the wiring tidy is a surface mounted, easy connect, wiring box for use on solid ceilings.



RECESSED MOUNTED INSTALLATION



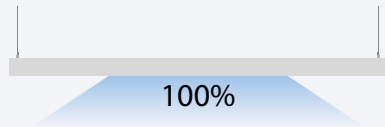
1 - Offer up the luminaire into the cut aperture and tighten the screw from below



2 - The bracket will rotate against the body and pull the body up to the ceiling

Technical Data

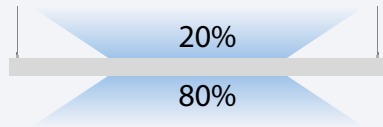
Downlight only



	LED WATTAGE PER METER	Downlight Only 4.59 ft —		Downlight Only 9.19 ft —		Downlight Only Corner L	
		LED WATTAGE	LUMEN OUTPUT	LED WATTAGE	LUMEN OUTPUT	LED WATTAGE	LUMEN OUTPUT
WHITE	6	8	1460	16	2920	8	1460
	10	14	2360	27	4720	14	2360
	14	20	3350	39	6700	20	3350
	22	31	5090	63	10180	31	5090
METALLIZED	6	8	1525	16	3050	8	1525
	10	14	2470	27	4940	14	2470
	14	20	3505	39	7010	20	3505
	22	31	5325	63	10650	31	5325
BLACK	6	8	1195	16	2390	8	1195
	10	14	1930	27	3860	14	1930
	14	20	2740	39	5480	20	2740
	22	31	4165	63	8330	31	4165

Technical Data

Up and Downlight



	Up and Downlight 4.59 ft —			Up and Downlight 9.19 ft —		Up and Downlight Corner L	
	LED WATTAGE PER METER	LED WATTAGE	LUMEN OUTPUT	LED WATTAGE	LUMEN OUTPUT	LED WATTAGE	LUMEN OUTPUT
WHITE	6	8	1450	16	2900	8	1450
	10	14	2350	27	4700	14	2350
	14	20	3345	39	6690	20	3345
	22	31	5105	63	10210	31	5105
METALLIZED	6	8	1525	16	3050	8	1525
	10	14	2470	27	4940	14	2470
	14	20	3510	39	7020	20	3510
	22	31	5355	63	10710	31	5355
BLACK	6	8	1240	16	2480	8	1240
	10	14	2010	27	4020	14	2010
	14	20	2860	39	5720	20	2860
	22	31	4365	63	8730	31	4365



Flex Family

The Flex family is a range of luminaires providing high quality, low glare lighting in a range of form factors, allowing the lighting designer to create attractive and inspirational spaces.

For further information on Flex family products, visit www.designplan.com/catalog/brands/thorlux/



Flexview

Flexview is a recessed lay-in luminaire with a dual light engine. Flexview combines a low-power, edge-lit picture window with separate sophisticated and highly efficient low glare optics for main space illumination.



Flexline

Flexline is a super narrow profile luminaire specifically for mounting to exposed T-bar ceilings. It is available in different lengths and shapes to create interesting lighting arrangements, offering a radically different solution to conventional 600x600 luminaires.

Flexbeam

Flexbeam is a suspended, narrow profile acoustic luminaire which can be installed alongside the Flexbeam plain baffles to create a combined acoustic and low glare lighting solution.



Flexbar

Flexbar is the new slim, low glare linear luminaire that can be individually or continuously surface mounted, suspended or recessed. Available with or without uplight, in white or black finish, available in three sizes and with the choice of three reflectors, expanding the Flex family.

