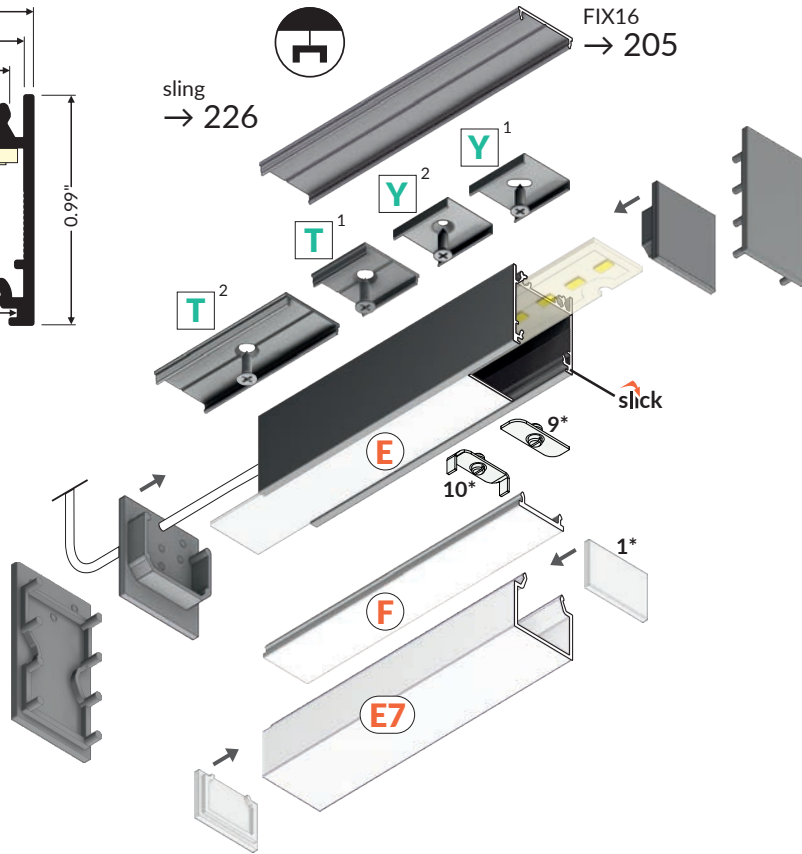
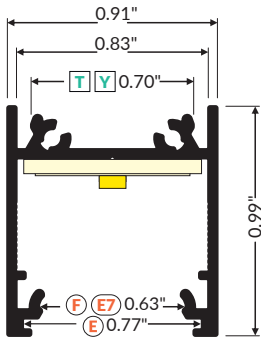


# LINEA20 EE7F/TY



- over 20 accessories available
  - possibility of suspension along with the power supply
  - angled connections illuminated
  - continuous light line
- (with 120 LEDs/m (3.28 ft) and opal diffuser applied)





**Y<sup>1</sup>** → 225  
mounting plate Y

**Y<sup>2</sup>** → 225  
mounting plate Y cone

**T<sup>1</sup>** → 221  
mounting plate T

**T<sup>2</sup>** → 221  
connector T 180 deg

**E** → 215  
diffuser E slide

**F** → 216  
diffuser F click

**E7** → 216  
diffuser E7 click

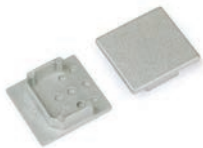
**1\*** → 216  
end cap E7

**9\*** → 227  
LED clamp LINEA20

**10\*** → 227  
LED clamp LINEA20-1

|                  |          |                |              |
|------------------|----------|----------------|--------------|
|                  |          |                |              |
| white painted    | anodized | black anodized | raw aluminum |
| 39.37" C1010001  | C1010020 | C1010021       | C1010000     |
| 78.74" C1020001  | C1020020 | C1020021       | C1020000     |
| 118.11" C1050001 | C1050020 | C1050021       | C1050000     |
| 159.45" C1060001 | C1060020 | C1060021       | C1060000     |

end cap LINEA20



white silver  
C1940001 C1940040

black grey  
C1940002 C1940022

end cap LINEA20-E7

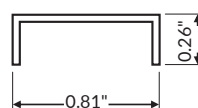


white silver  
C1999901 C1999940

black grey  
C1999902 C1999922

LED mounting LINEA20

material: aluminum



raw aluminium

|         |          |
|---------|----------|
| 39.37"  | C6050000 |
| 78.74"  | C6060000 |
| 118.11" | C6070000 |
| 159.45" | C6080000 |



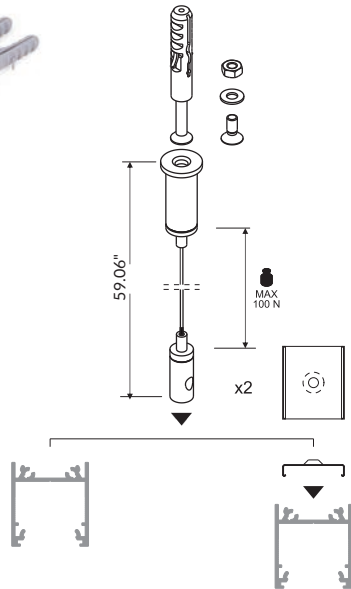
# SLING

sling for mounting

color: chrome



→ 227

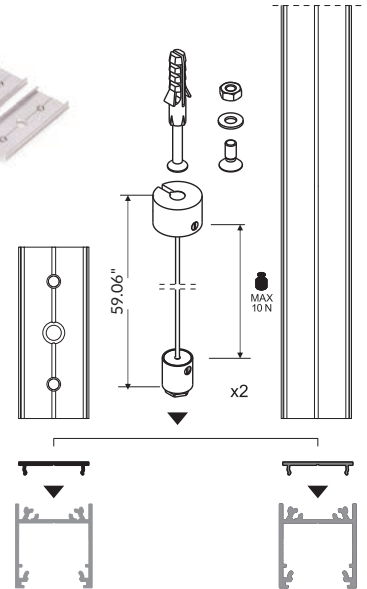


SELV sling 50 V

colors: white, silver, black



→ 227



**SLING FOR LED MOUNTING 1500**  
Compatible with flexible mounting plates,  
allows fast and easy assembly of the luminaire.  
mounting to the profile.

**SELV SLING  
50 V 1500**  
It provides a minimalistic  
look - no additional  
wires required.

Using FIX16 profile creates an  
aesthetic, closed form

# CONNECTION POSSIBILITY

## ANGULAR CONNECTORS

Thanks to five different angle connectors (60° / 90° / 120° / 135° / 180°) it is possible to create many various lighting systems – with no need to cut the profile at an angle. Bent connectors allows to connect profiles in two planes, at two angles: 90° on the inside and 270° on the outside.



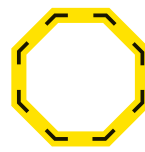
60°



90°



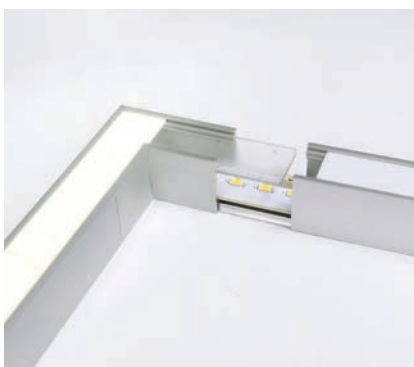
120°



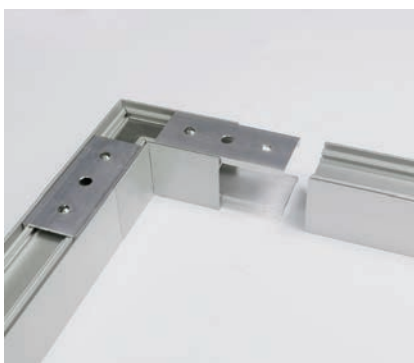
135°



180°



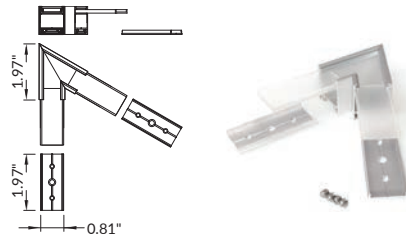
The component made of clear fabric provides secure connection, letting light through at the same time. Thanks to that, the luminaire can illuminate on the entire surface of the diffuser – even in the corners.



# CONNECTORS

material: aluminium, polycarbonate

connector LINEA20 60 deg

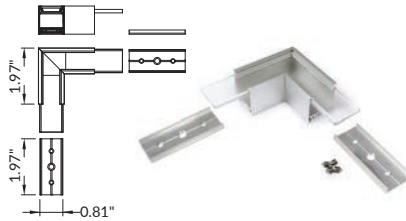


white painted  
**C1850001**

anodized  
**C1850020**

black anodized  
**C1850002**

connector LINEA20 90 deg

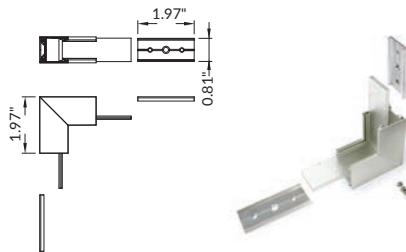


white painted  
**C1860001**

anodized  
**C1860020**

black anodized  
**C1860002**

connector LINEA20 90 deg bent

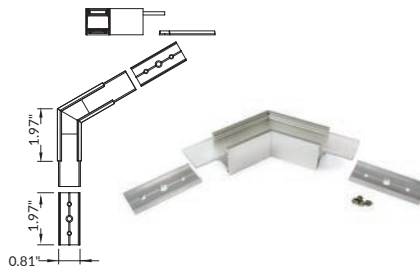


white painted  
**C1870001**

anodized  
**C1870020**

black anodized  
**C1870002**

connector LINEA20 120 deg

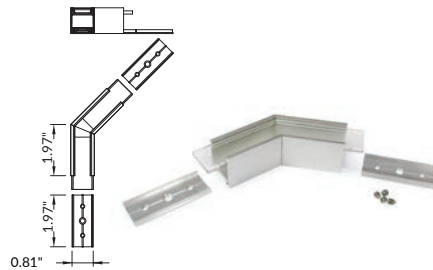


white painted  
**C1880001**

anodized  
**C1880020**

black anodized  
**C1880002**

connector LINEA20 135 deg



white painted  
**C1890001**

anodized  
**C1890020**

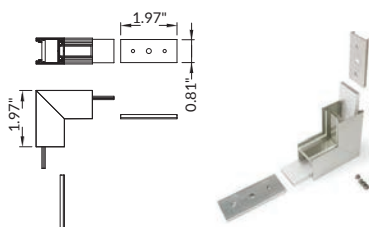
black anodized  
**C1890002**

connector LINEA20 180 deg



**C1900000**

connector LINEA20 270 deg bent



white painted  
**C1910001**

anodized  
**C1910020**

black anodized  
**C1910002**