

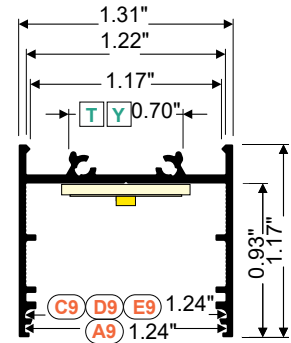
Vario 30-02 is a surface mounted or suspended LED profile that is part of a larger system that creates a continuous line of light in angled connections for unlimited possibilities for light creation. With a body made of aluminum, it comes in 4 lengths, 39.4", 78.7", 118.1" or 159.5", and 4 standard finishes.

TECHNICAL DATA

Wattage	18W per 3.28 ft (1 m)
Power Supply	Remote 24VDC, not included. See page 2
Construction	Body: Aluminum
CCT	2700K, 3000K, 4000K
CRI	85
Delivered Lumens	2034 lm per 3.28 feet (3000K)
Efficacy	113 lm/W
Optics	LED Tape, Field Cuttable (See page 2)
Finish	White Painted, Anodized, Black Anodized, Raw Aluminum
Fixture Dimensions	Length: 39.37", 78.74", 118.11", or 159.45" Max LED Width: 1.18"
IP Rating	IP20



Fixture Dimensions



ORDERING INFORMATION

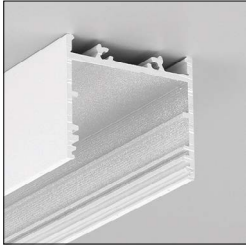
Example: V3050001.US. LED Tape / Accessories ordered separately.

V3			.US
Model No.	Length	Finish	
V3	0500 - 39.37"	00 - Raw Aluminum	.US
	0600 - 78.74"	01 - White Painted	
	0700 - 118.11"	20 - Anodized	
	0800 - 159.45"	21 - Black Anodized	

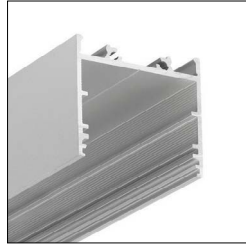
Job Name/Date:

Fixture Type Designation:

FINISHES



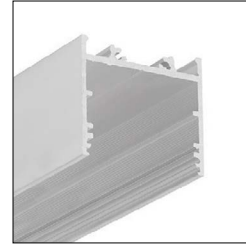
White Painted



Anodized



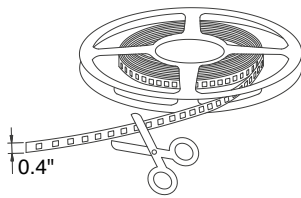
Black Anodized



Raw Aluminum

LED TAPE

24VDC - Field Cuttable



PPLL00622 – 2700K

PPLL00623 – 3000K

PPLL00624 – 4000K

16.40' l x 0.4" w

SUGGESTED POWER SUPPLIES

24VDC

Part Number	Description	Input/Output	# of Fixtures
PPLT00481	Non-Dim	120-277VAC to 24VDC, 24W, Class 2	1-1
PPLT00690	ELV / TRIAC & 0-10V Dimming	120-277VAC to 24VDC, 40W, Class 2, IP67	1-1
PPLT00691	Non-Dim	120-277VAC to 24VDC, 60W, Class 2, IP67	1-2
PPLT00709	ELV / TRIAC & 0-10V to 5% and OFF	120-277VAC to 24VDC, 96W, Class 2, DAMP	1-4
PPLT00158	Non-Dim	120VAC to 24VDC, 100W, Class 2	1-4
PPLT00543	0-10V Dimming to 15% (-40°C / -40°F cold weather start)	120-277VAC to 24VDC, 100W, Class 2	1-4

Suggested Lutron Compatible

Part Number	Option	Lutron SKU	Dim Range	Description	Input/Output	# of Fixtures
PPLT00273	L3DAE / L3DA3W	L3DA	100%-1%	Hi-Lume™ 1% EcoSystem™ or 1% 3-Wire LED Driver	120-277VAC to 24VDC, 40W, Class 2	1-1
PPLT00530	L3D0E / L3D03W	L3D0	100% to 0.1%	Hi-Lume™ Premier 0.1% EcoSystem™ or 3-Wire LED F2B Driver	120-277VAC to 24VDC, 96W, Class 2	1-4

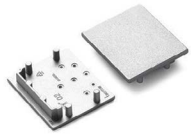
For other power supply options consult factory.

Job Name/Date:

Fixture Type Designation:

ACCESSORIES

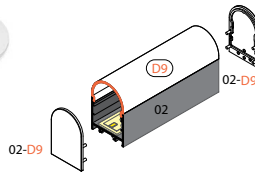
End Caps



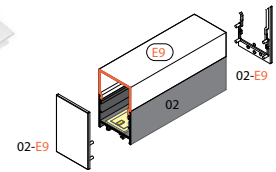
V48800__
End Cap
VARIO30-02
01 - White
02 - Black
22 - Gray
40 - Silver



V4540038
End Cap
VARIO30-02 D9
Opal



V4550038
End Cap
VARIO30-02 E9
Opal

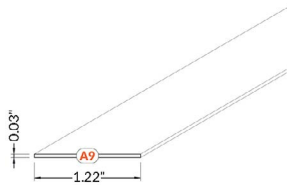


ACCESSORIES

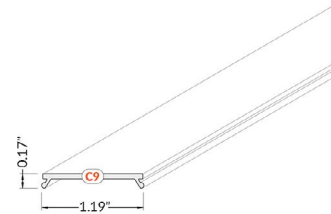
Diffusers



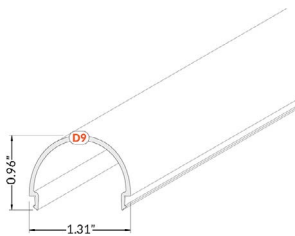
Diffuser A9 Slide
V3000116 - Transparent
V3000138 - Opal
V3000139 - Frosted



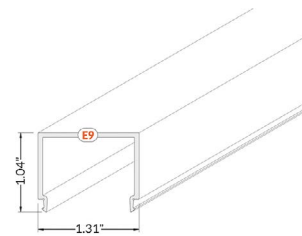
Diffuser C9 Click
V3450016 - Transparent
V3450038 - Opal
V3450041 - Black



Diffuser D9 Click
V3490038 - Opal



Diffuser E9 Click
V3530038 - Opal

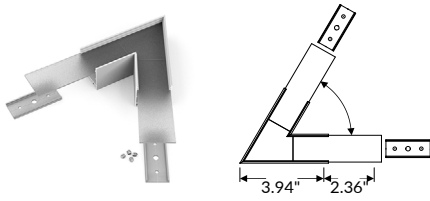


Job Name/Date:

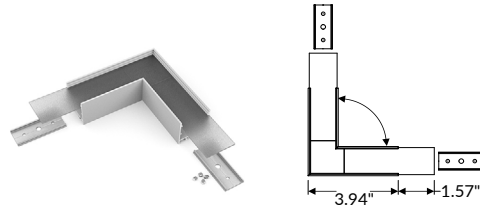
Fixture Type Designation:

ACCESSORIES

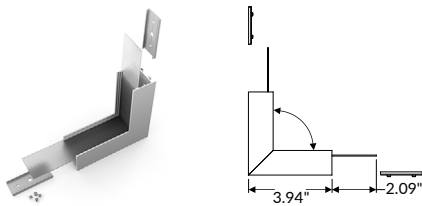
Connectors



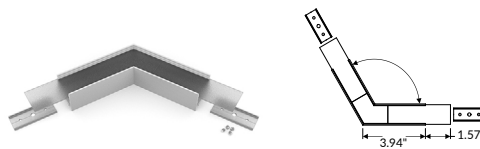
V46600____
 Connector VARIO30-02 - 60°
01S - White Painted
20S - Anodized
21S - Black Anodized



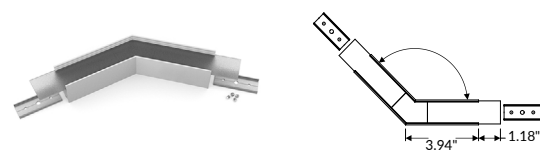
V46700____
 Connector VARIO30-02 - 90°
01S - White Painted
20S - Anodized
21S - Black Anodized



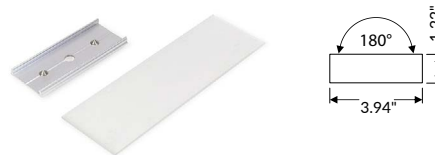
V46800____
 Connector VARIO30-02 90° Bent
01S - White Painted
20S - Anodized
21S - Black Anodized



V46900____
 Connector VARIO30-02 120°
01S - White Painted
20S - Anodized
21S - Black Anodized



V47000____
 Connector VARIO30-02 135°
01S - White Painted
20S - Anodized
21S - Black Anodized



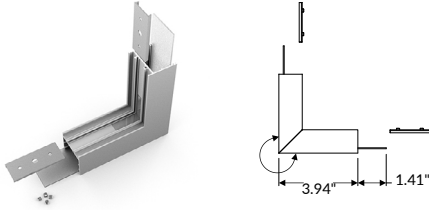
V4640000S
 Connector VARIO30-02 180°

Job Name/Date:

Fixture Type Designation:

ACCESSORIES

Connectors



V47100__

Connector VARIO30-02 270° Bent

01S - White Painted

20S - Anodized

21S - Black Anodized

Job Name/Date:

Fixture Type Designation: