

WALLE 12

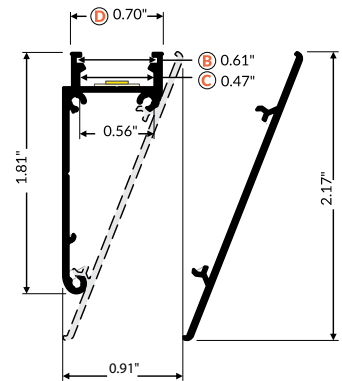
Walle 12 is a special application LED profile mounted directly to the wall or ceiling. With a body made of aluminum, it comes in 4 different lengths, 39.4", 78.7", 118.1" or 159.5" and 4 standard finishes.

TECHNICAL DATA

Wattage	18W per 3.28 ft (1 m)
Power Supply	Remote 24VDC, not included. See page 2
Construction	Body: Aluminum
CCT	2700K, 3000K, 4000K
CRI	85
Delivered Lumens	2034 lm per 3.28 feet (3000K)
Efficacy	113 lm/W
Optics	LED Tape, Field Cutable (See page 2)
Finish	White Painted, Anodized, Raw Aluminum
Fixture Dimensions	Length: 39.37", 78.74", 118.11", or 159.45" Max LED Width: 0.47"
IP Rating	IP20



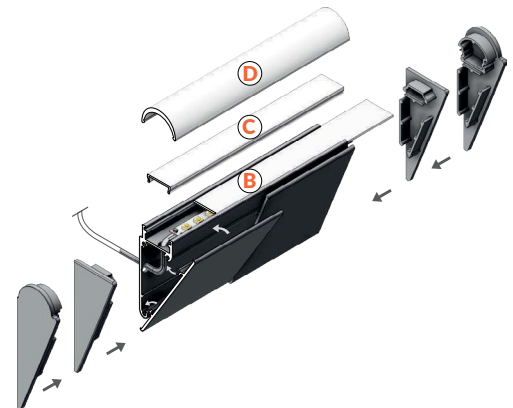
Fixture Dimensions



ORDERING INFORMATION

Example: B8050001.US. LED Tape / Accessories ordered separately.

	.US
Model No.	
B8050001 - 39.4", White Painted	.US
B8010020 - 39.4", Anodized	
B8010000 - 39.4", Raw Aluminum	
B8060001 - 78.4", White Painted	
B8020020 - 78.4", Anodized	
B8020000 - 78.4", Raw Aluminum	
B8090001 - 118.1", White Painted	
B8090020 - 118.1", Anodized	
B8090000 - 118.1", Raw Aluminum	
B8100001 - 159.5", White Painted	
B8100020 - 159.5", Anodized,	
B8100000 - 159.5", Raw Aluminum	



Job Name/Date:

Fixture Type Designation:

FINISHES



White Painted



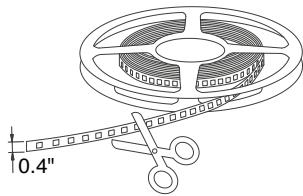
Anodized



Raw Aluminum

LED TAPE

24VDC - Field Cuttable



PPLL00622 – 2700K

PPLL00623 – 3000K

PPLL00624 – 4000K

16.40' l x 0.4" w

SUGGESTED POWER SUPPLIES

24VDC

Part Number	Description	Input/Output	# of Fixtures
PPLT00481	Non-Dim	120-277VAC to 24VDC, 24W, Class 2	1-1
PPLT00690	ELV / TRIAC & 0-10V Dimming	120-277VAC to 24VDC, 40W, Class 2, IP67	1-1
PPLT00691	Non-Dim	120-277VAC to 24VDC, 60W, Class 2, IP67	1-2
PPLT00709	ELV / TRIAC & 0-10V to 5% and OFF	120-277VAC to 24VDC, 96W, Class 2, DAMP	1-4
PPLT00158	Non-Dim	120VAC to 24VDC, 100W, Class 2	1-4
PPLT00543	0-10V Dimming to 15% (-40°C / -40°F cold weather start)	120-277VAC to 24VDC, 100W, Class 2	1-4

Suggested Lutron Compatible

Part Number	Option	Lutron SKU	Dim Range	Description	Input/Output	# of Fixtures
PPLT00273	L3DAE / L3DA3W	L3DA	100%-1%	Hi-Lume™ 1% EcoSystem™ or 1% 3-Wire LED Driver	120-277VAC to 24VDC, 40W, Class 2	1-1
PPLT00530	L3D0E / L3D03W	L3D0	100% to 0.1%	Hi-Lume™ Premier 0.1% EcoSystem™ or 3-Wire LED F2B Driver	120-277VAC to 24VDC, 96W, Class 2	1-4

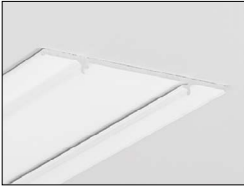
For other power supply options consult factory.

Job Name/Date:

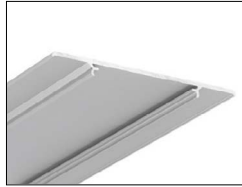
Fixture Type Designation:

ACCESSORIES

Covers



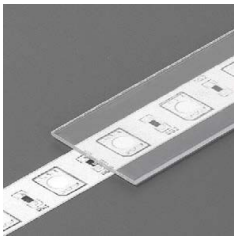
B8070001 - 39.4"
B8080001 - 78.4"
B8110001 - 118.1"
B8120001 - 159.5"
 White Painted



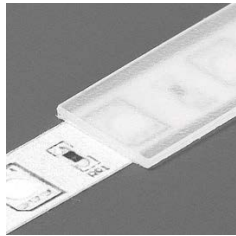
B8030020 - 39.4"
B8040020 - 78.4"
B8110020 - 118.1"
B8120020 - 159.5"
 Anodized

ACCESSORIES

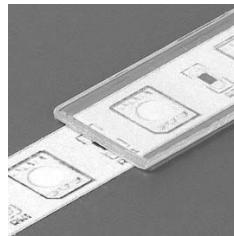
Diffusers



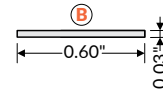
76000116 - 39.4"
76000216 - 78.7"
 Diffuser B Slide
transparent



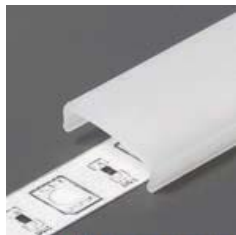
76000139 - 39.4"
76000239 - 78.7"
76000339 - 118.1"
 Diffuser B Slide
frosted



76000138 - 39.4"
76000238 - 78.7"
 Diffuser B Slide
opal



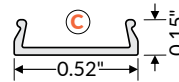
76320000 - 39.4"
76330000 - 78.4"
76650000 - 118.1"
76660000 - 161.4"
 Diffuser C Click
transparent



76320038 - 39.4"
76330038 - 78.4"
76650038 - 118.1"
76660038 - 161.4"
 Diffuser C Click
opal



76320041 - 39.4"
76330041 - 78.4"
76650041 - 118.1"
76660041 - 161.4"
 Diffuser C Click
black



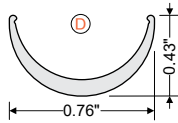
76360038S
 Diffuser C Click
 65.6 foot reel / pack
opal

Job Name/Date:

Fixture Type Designation:

ACCESSORIES

Diffusers



A1130038 - 39.4"

A1140038 - 78.7"

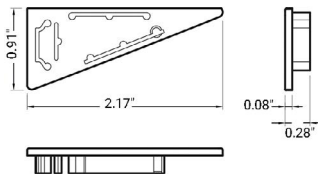
A1150038 - 39.4"

A1160038 - 78.7"

Diffuser D Click
opal

ACCESSORIES

End Caps



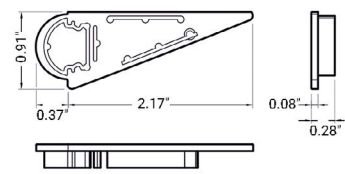
B89000__

End Cap WALLE12

01 - White

40 - Silver

22 - Gray



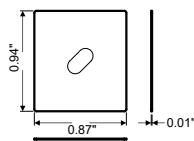
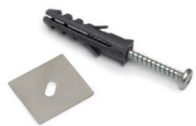
B88900__

End Cap WALLE12-D

01 - White

40 - Silver

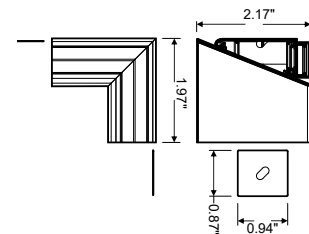
22 - Gray



B8950019

Connector 180°

Inox



B89100__

Connector 90°

01 - White Painted

20 - Anodized

Job Name/Date:

Fixture Type Designation: