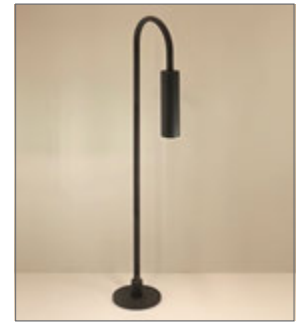




INSTRUCTIONS PERTAINING TO RISK OF FIRE OR INJURY TO PERSONS. READ ALL INSTRUCTIONS. IMPORTANT SAFETY INSTRUCTIONS. SAVE THESE INSTRUCTIONS.

DANGER - RISK OF SHOCK - DISCONNECT POWER BEFORE INSTALLATION! Please read all instructions before installation.

- Keep these instructions for future reference.
- Must be installed by a qualified electrician in accordance with national and local standards. Designplan is not responsible for fixtures installed without regard to these standards.
- The main power connection must be in accordance with local electrical codes.
- Unauthorized alterations or tampering of product voids warranty.
- Suitable for OUTDOOR applications.



IP65

Electrical Connections:

- LED lights must be **connected in series** respecting polarities.
- **CHOOSE POWER SUPPLY ACCORDINGLY.** Please consider the voltage through which fixtures are fed as well as the max power consumption.
- **Connect power only if all fixtures are connected.**
- The power supplies MUST be installed in aerated rooms, far from heat sources. Overworking or lack of air circulation will not permit natural dissipation.
- The electronic power supply is current-stable, therefore it partially compensates the voltage-drop problems related to the cable length; we suggest not to exceed 100 ft.
- Use only Class 2 type electronic power supply.
- Never use switches on secondary circuit.

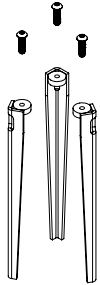
ATTENTION: For In-Grade - It is the contractor's responsibility to seal the conduit with "Great Stuff" aerosol seal that prevents water and moisture penetration for ultimate protection. Contractor **MUST** use gel-filled wire nuts.

Maintenance

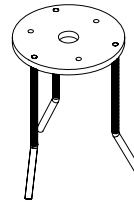
Scheduled maintenance must be carried out once a year on all lighting devices, regardless of appliance class and type of use. It must include the following operations:

- Periodically clean fixtures to remove dirt from gratings and screw heads.
- Check tightness of screws on various parts of the device.
- Check that all cable glands and cables are intact and tight. Check that the glass or plastic lens is intact, and replace it if broken or damaged.
- The internal components such as the ballast, driver, washers and screws must not show clear signs of oxidation or rust. Clear traces of rust and oxidation will indicate the presence of water inside the device.
- In the case of damage, the components must be replaced by original components or spare parts.

MOUNTING ACCESSORIES

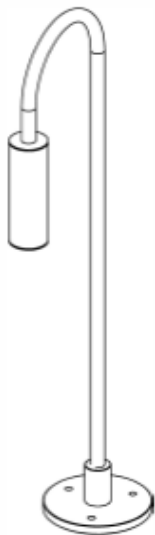


AM-00023
Spike Assembly
(Set of 3)
Included in price

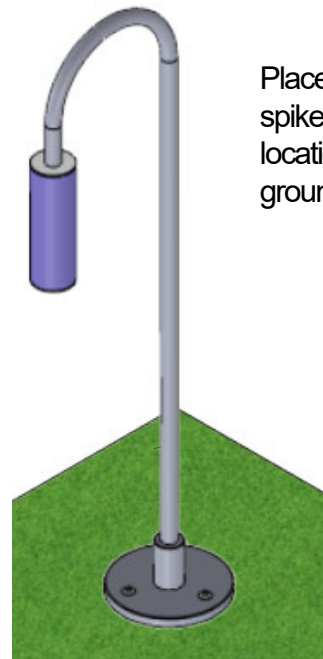
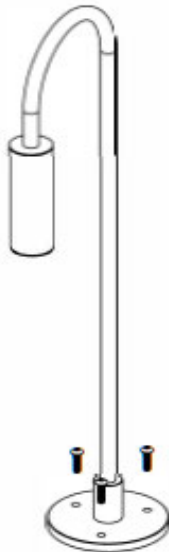


AM-00018
Concrete Pour Anchor
Included in price

FIXTURE INSTALLATION - SPIKE



Screw in the
spike accessory
into the fixture if
not done already.



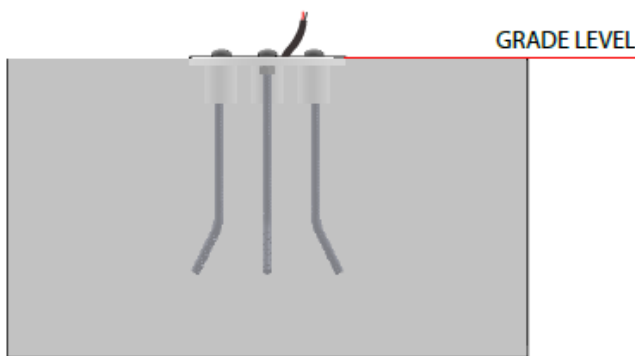
Place fixture with
spike on the desired
location of the
ground.

Make hole deep enough for spike
to go through the ground and
insert fixture into ground as shown.

- It is the contractor's responsibility to install Remote Driver in a suitable electrical enclosure.
- It is the contractor's responsibility to caulk around all the edges between the fixture and the mounting surface, to satisfy wet label requirements.

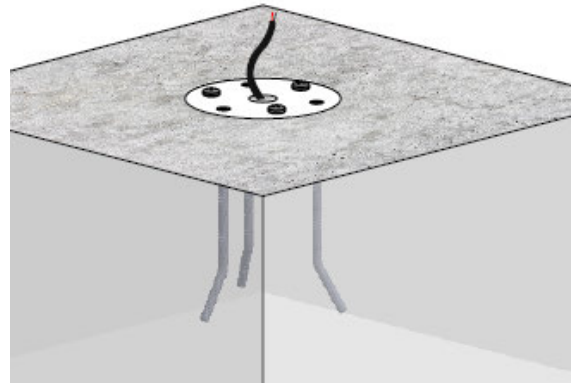
FIXTURE INSTALLATION - CONCRETE POUR APPLICATION

- If doing concrete pour, assemble the mounting base assembly (**AM-00018**) with screws provided.
- Pour concrete and allow the base assembly to be cured, with three screws exposed. Once cured, the existing screws may be unscrewed from the base assembly and the base plate may be screwed into the base plate with the same screws going into the hex coupling nuts.
- The cover and rest of the fixture may be screwed into the base plate. Make proper wiring connections by feeding the cable through the stem and holes of the base plate and base plate assembly.



1. 1/4" x 1/2" Screws and hex couplings are to be installed in the concrete as shown.

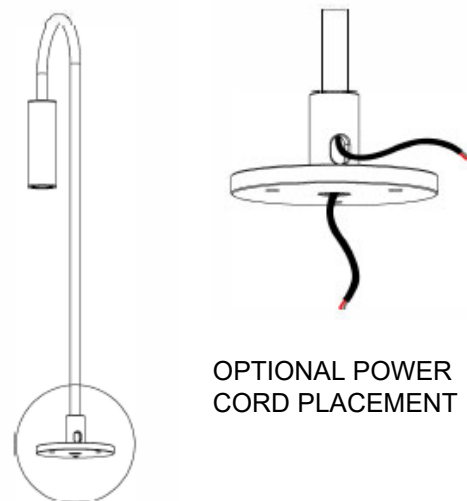
1. 1/4" x 1/2" Screws and hex couplings are to be installed in the concrete as shown.



2.



3.

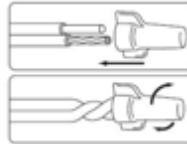


OPTIONAL POWER CORD PLACEMENT

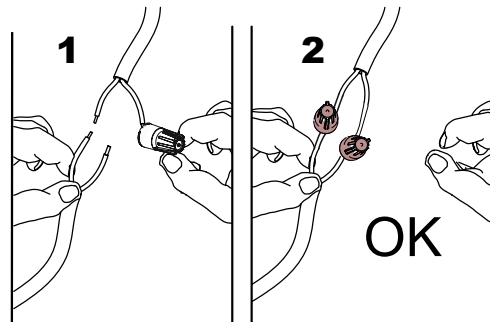
- It is contractor's responsibility to make proper arrangement for power supply wires.

4.

It is contractor's responsibility to make proper arrangement for power supply wires.



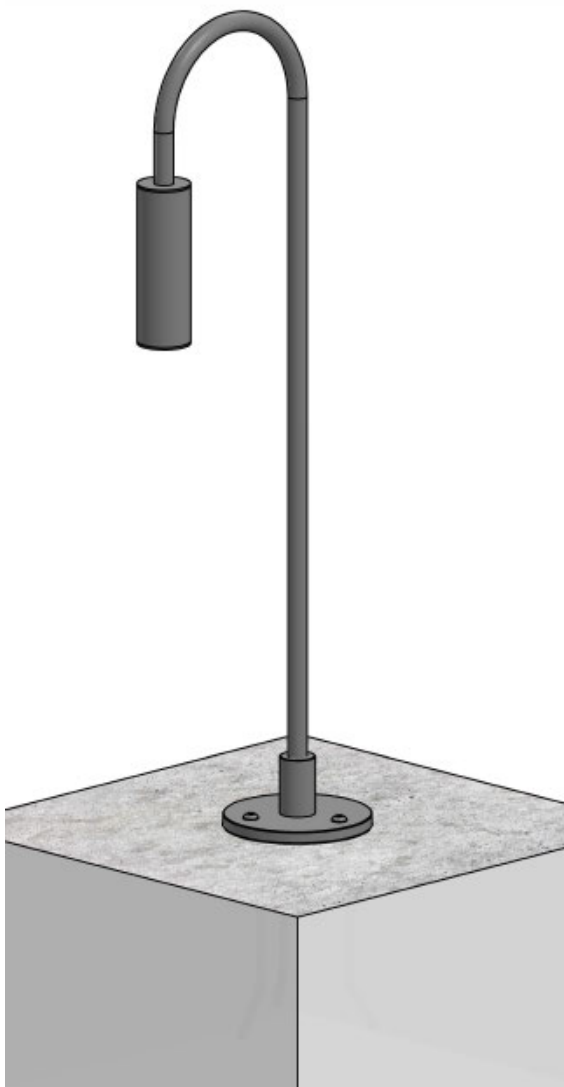
Use gel-filled waterproof wire-nuts for wire connections.



- It is the contractor's responsibility to install Remote Driver in a suitable electrical enclosure.

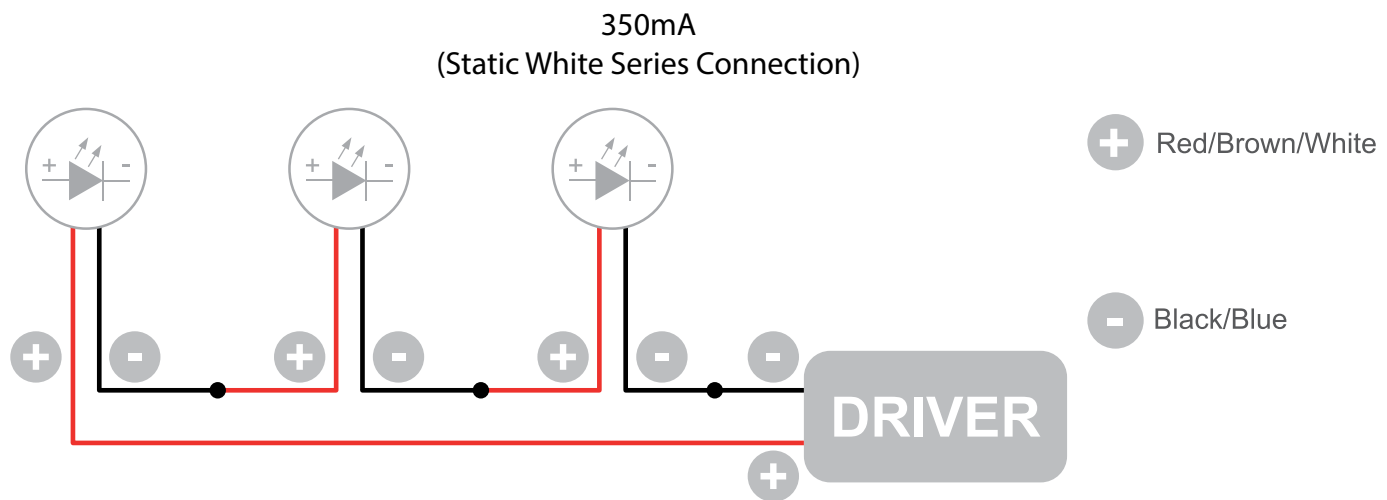
- M6 Screws and hex couplings are to be installed in the concrete as shown.
- Ensure that the **AM-00018** base plate is leveled and flush with concrete surface.

5.



- It is the contractor's responsibility to caulk around the edges between the fixture and the mounting surface, to satisfy wet label requirements.

Wiring Diagram

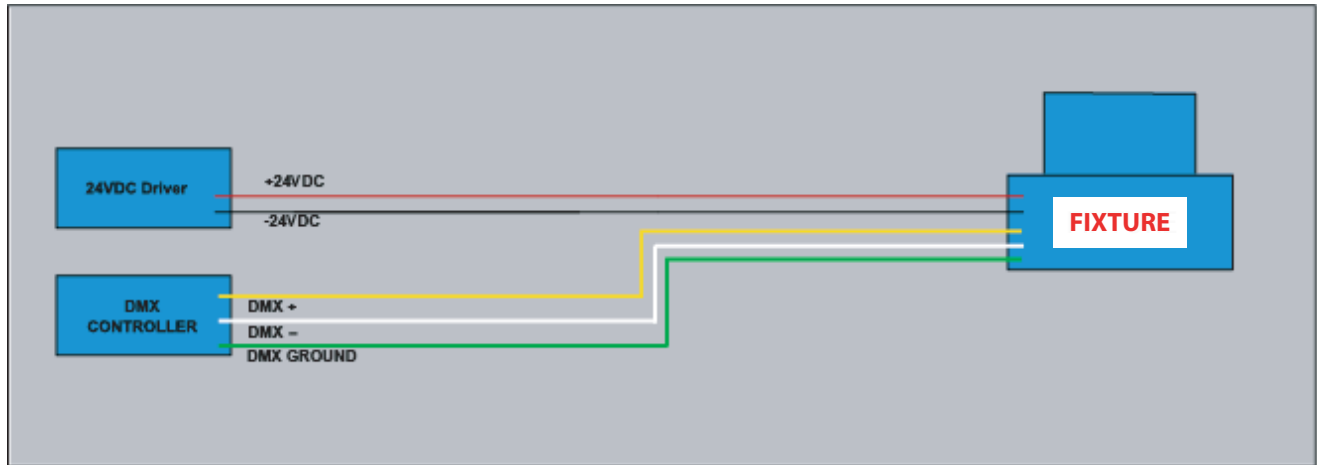


The individual lamps must be connected in series.
Only power up the system once all the lamps have been connected.

- LED lights work at constant current. When choosing a power supply unit, you need to consider the current by which the LEDs are driven and their maximum power consumption.
- Only power up the system once all the lamps are connected. Connecting an individual lamp to an active power supply may cause the lamp to break due to over-voltage.
- The electronic power supply is constant current, so to a certain extent it automatically compensates the voltage drop associated with cable length; however, we advise not exceeding 100 feet.
- Lamps and power supply units must be installed in well-ventilated boxes or locations to allow a natural heat diffusion and avoid the devices overheating.
- On the power system, install a surge protection device to reduce the intensity of any voltage spikes to protect the lighting fixtures from the risk of damage.
- Fixture NOT suitable for covering with thermally insulating material.

POWER/DMX

Wiring Diagram



DMX/RDM - IN	POWER:
YELLOW - POS +	RED - POS (+24VDC)
WHITE - NEG -	BLACK - NEG (-24VDC)
GREEN - GOUND	