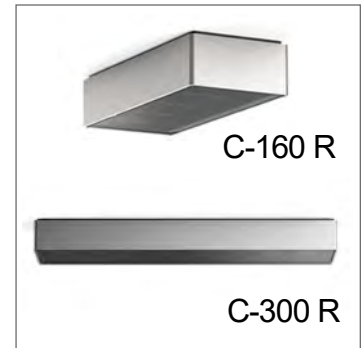




INSTRUCTIONS PERTAINING TO RISK OF FIRE OR INJURY TO PERSONS. READ ALL INSTRUCTIONS. IMPORTANT SAFETY INSTRUCTIONS. SAVE THESE INSTRUCTIONS.

DANGER - RISK OF SHOCK - DISCONNECT POWER BEFORE INSTALLATION! Please read all instructions before installation.

- Keep these instructions for future reference.
- Must be installed by a qualified electrician in accordance with national and local standards. Designplan is not responsible for fixtures installed without regard to these standards.
- Unauthorized alterations or tampering of product voids warranty.
- The main power connection must be in accordance with local electrical codes.
- Suitable for OUTDOOR applications.



IP65 IK08

Electrical Connections:

- LED lights must be **connected in parallel** respecting polarities.
- **CHOOSE POWER SUPPLY ACCORDINGLY.** Please consider the voltage through which fixtures are fed as well as the max power consumption.
- **Connect power only if all the fixtures are connected.**
- The power supplies **MUST** be installed in aerated rooms, far from heat sources. Overworking or lack of air circulation will not permit natural dissipation.
- Use only Class 2 type electronic power supply.
- Never use switches on secondary circuit.

ATTENTION: **For In-Grade** - It is the contractor's responsibility to seal the conduit with "Great Stuff" aerosol seal that prevents water and moisture penetration for ultimate protection. Contractor **MUST** use gel-filled wire nuts.

Maintenance

Scheduled maintenance must be carried out once a year on all lighting devices, regardless of appliance class and type of use. It must include the following operations:

- Periodically clean fixtures to remove dirt from gratings and screw heads.
- Check tightness of screws on various parts of the device.
- Check that all cable glands and cables are intact and tight. Check that the glass or plastic lens is intact, and replace it if broken or damaged.
- The internal components such as the ballast, driver, washers and screws must not show clear signs of oxidation or rust. Clear traces of rust and oxidation will indicate the presence of water inside the device.
- In the case of damage, the components must be replaced by original components or spare parts.

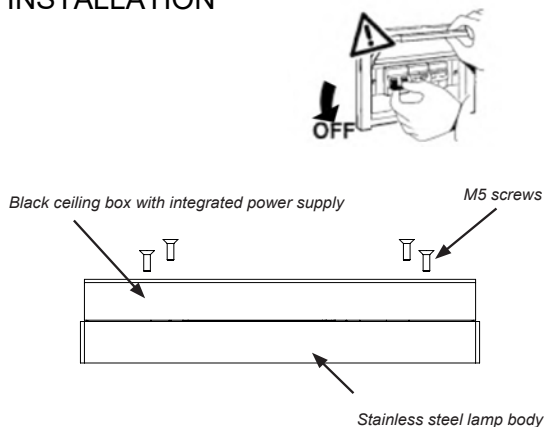
BAJA C-160 R, C-300R

14W, 28W, REMOTE 500mA

designplan®

installation instructions

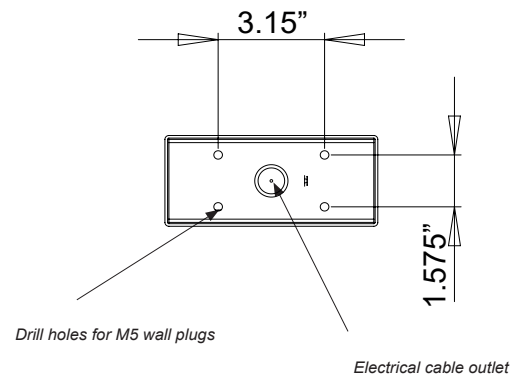
FIXTURE INSTALLATION



Before starting the installation, refer to the exploded diagram to identify the individual components:

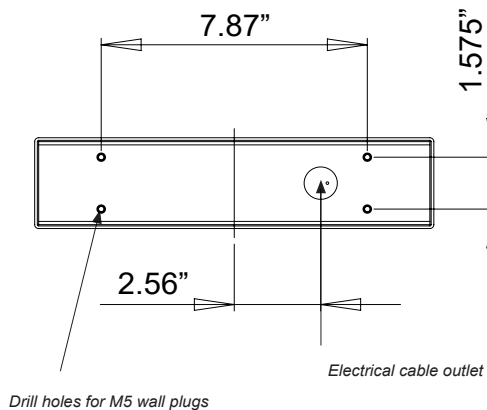
- Black ceiling box with integrated power supply
- Stainless steel lamp body
- M5 screws (included)

CEILING DRILLING FOR BAJA 160



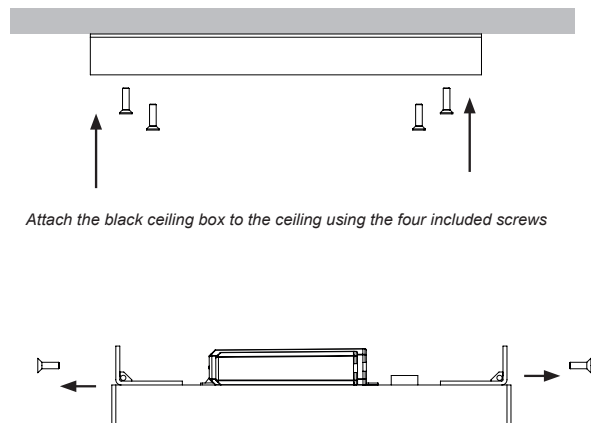
Drill holes according to the dimensions specified for the purchased model:
Drill 4 holes in the ceiling, with 3.15" spacing (width) and 1.575" (height), suitable for M5 screws with 0.630" plugs.

CEILING DRILLING FOR BAJA 300

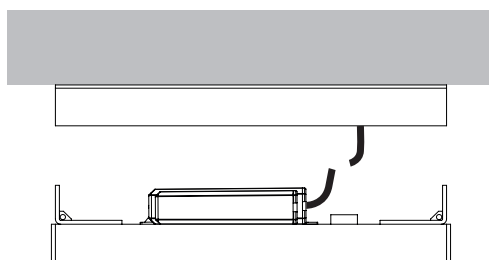


Drill holes according to the dimensions specified for the purchased model:
Drill 4 holes in the ceiling, with 7.87" spacing (width) and 1.575" (height), suitable for M5 screws with 0.630" plugs.

FIXING :

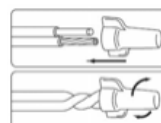


ELECTRICAL CONNECTION



Feed the electrical cable through the central hole in the mounting bracket

Connect the electrical wires using the waterproof wirenut connector .



Use gel-filled waterproof wire-nuts for wire connections.

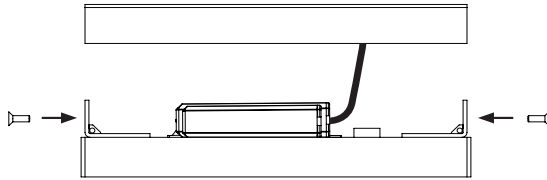
BAJA C-160 R, C-300R

14W, 28W, REMOTE 500mA

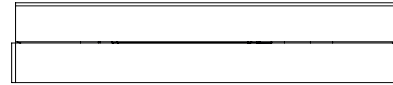
designplan®

installation instructions

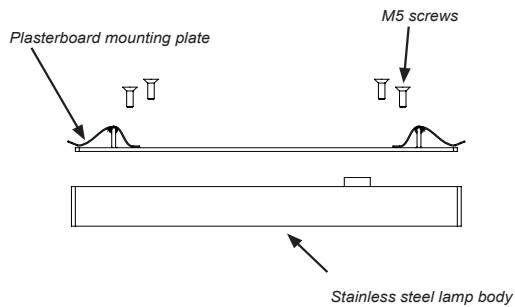
FIXING THE LAMP :



Align the lamp body with the previously installed ceiling box and reinsert and tighten the screws removed earlier to secure the lamp in place



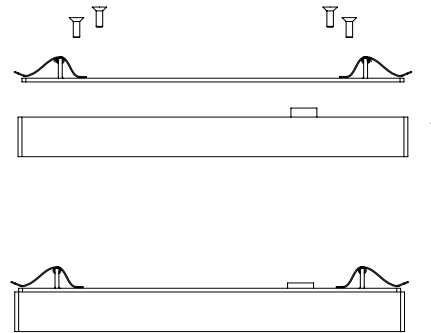
MODEL WITH REMOTE POWER SUPPLY :



Before starting the installation, refer to the exploded diagram to identify the individual components:

- Plasterboard mounting plate
- Stainless steel lamp body
- 4 M5 screws (included)

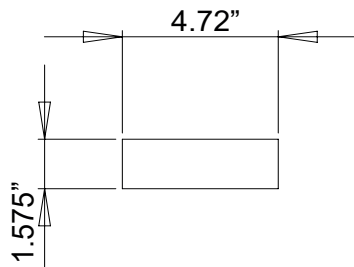
MOUNTING :



As a first step, screw the plasterboard plate to the lamp body using the 4 provided screws

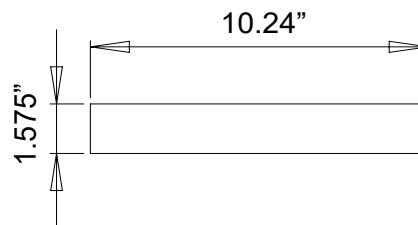
PREPARING THE INSTALLATION SURFACE :

CEILING DRILLING FOR BAJA 160



Cut the plasterboard according to the dimensions specified for the purchased model:
Cut an opening 4.72" wide and 1.575" high
Both openings must have a depth of at least 0.472"

CEILING DRILLING FOR BAJA 300



Cut the plasterboard according to the dimensions specified for the purchased model:
Cut an opening 10.24" wide and 1.575" high
Both openings must have a depth of at least 0.472".

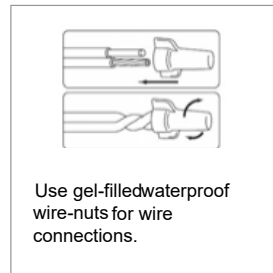
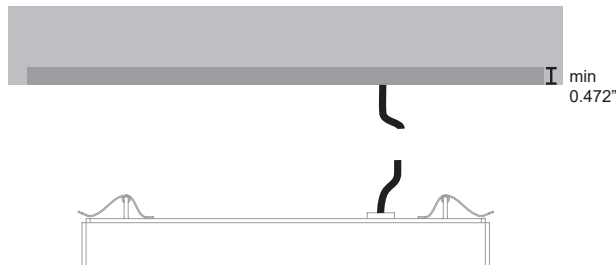
BAJA C-160 R, C-300R

14W, 28W, REMOTE 500mA

designplan®

installation instructions

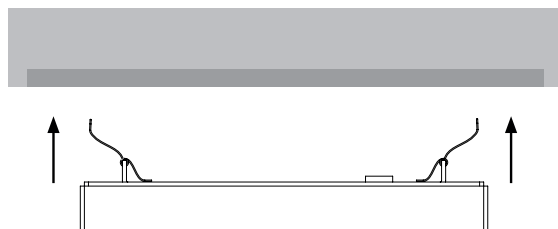
ELECTRICAL CONNECTION



- It is the contractor's responsibility to install Remote Driver in a suitable electrical enclosure.

Connect the secondary cable from the remote power supply to the low-voltage cable, ensuring correct polarity (red +, black -), using a connector not included in the package

FIXING THE FIXTURE



Fold the wings of the plasterboard plate and insert it into the ceiling opening



Once inserted, the product is correctly mounted



